

# 1 AP2M1

This gene encodes a subunit of the heterotetrameric coat assembly protein complex 2 (AP2), which belongs to the adaptor complexes medium subunits family. The encoded protein is required for the activity of a vacuolar ATPase, which is responsible for proton pumping occurring in the acidification of endosomes and lysosomes. The encoded protein may also play an important role in regulating the intracellular trafficking and function of CTLA-4 protein. Two transcript variants encoding different isoforms have been found for this gene.

The gene AP2M1 is expressed throughout human and bat datasets with significant upregulation in bat 23 h after Marburg infection.

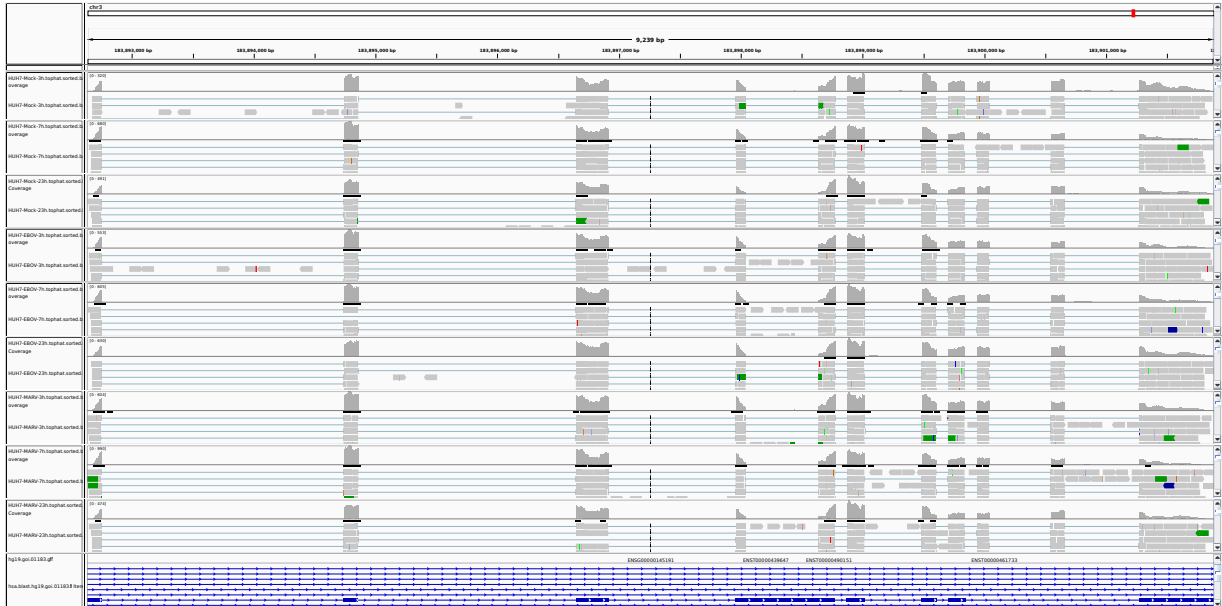


Figure 1: IGV Genome Browser screenshot of gene AP2M1.

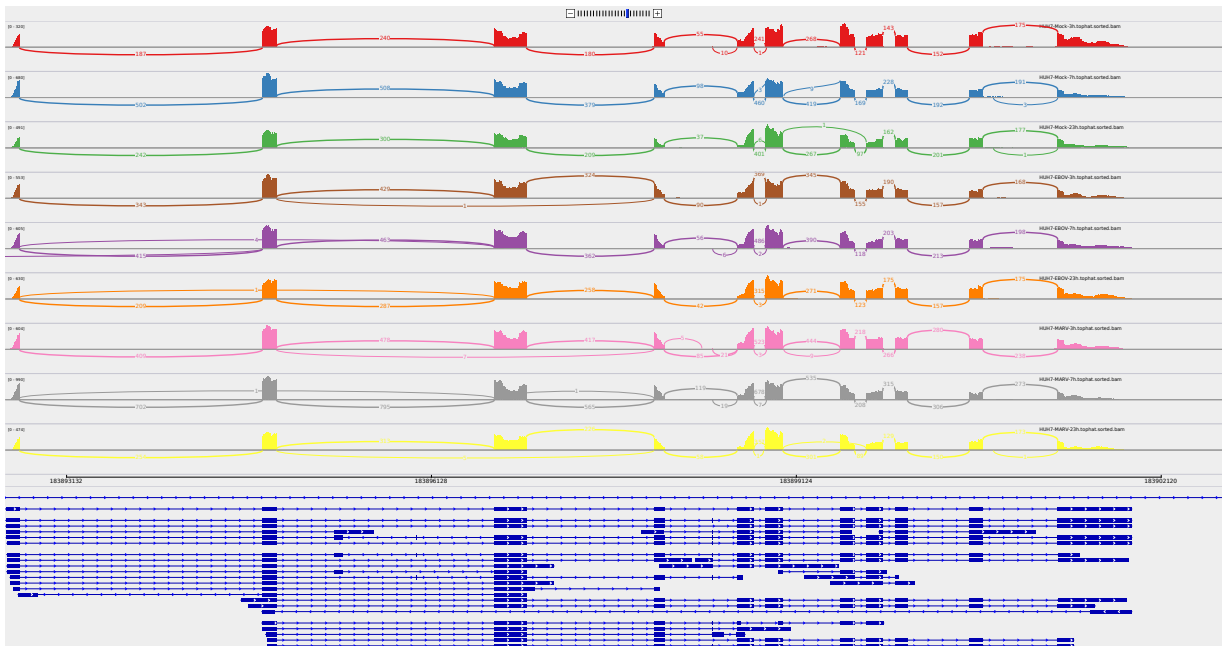


Figure 2: Sashimi plot of gene AP2M1.

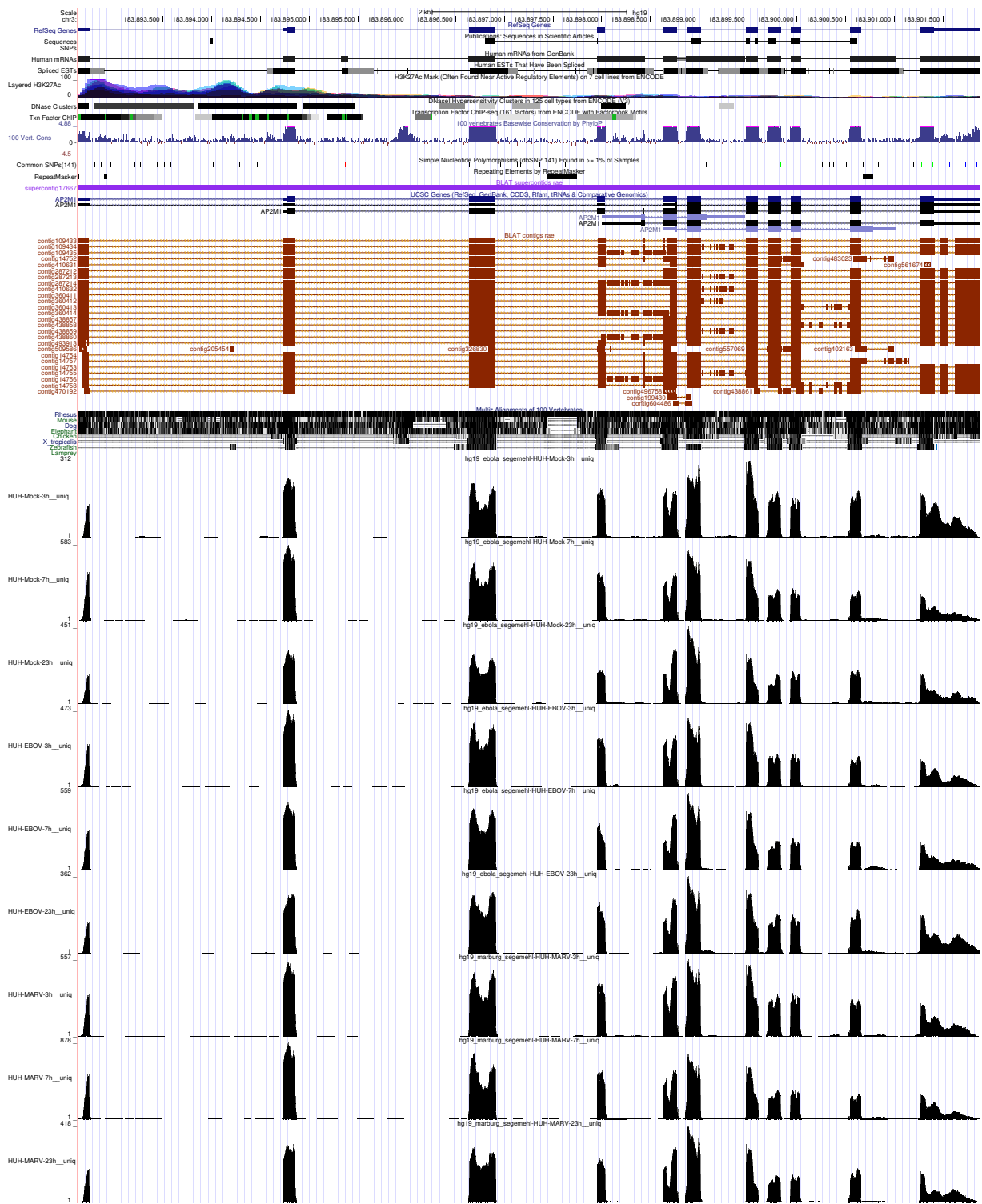


Figure 3: UCSC Genome Browser screenshot of gene AP2M1.