

1 GIT1

The GIT1 is a G protein-coupled receptor kinase.

This gene is slightly upregulated in bat after Ebola an Marburg infection.



Figure 1: IGV Genome Browser screenshot of gene GIT1.

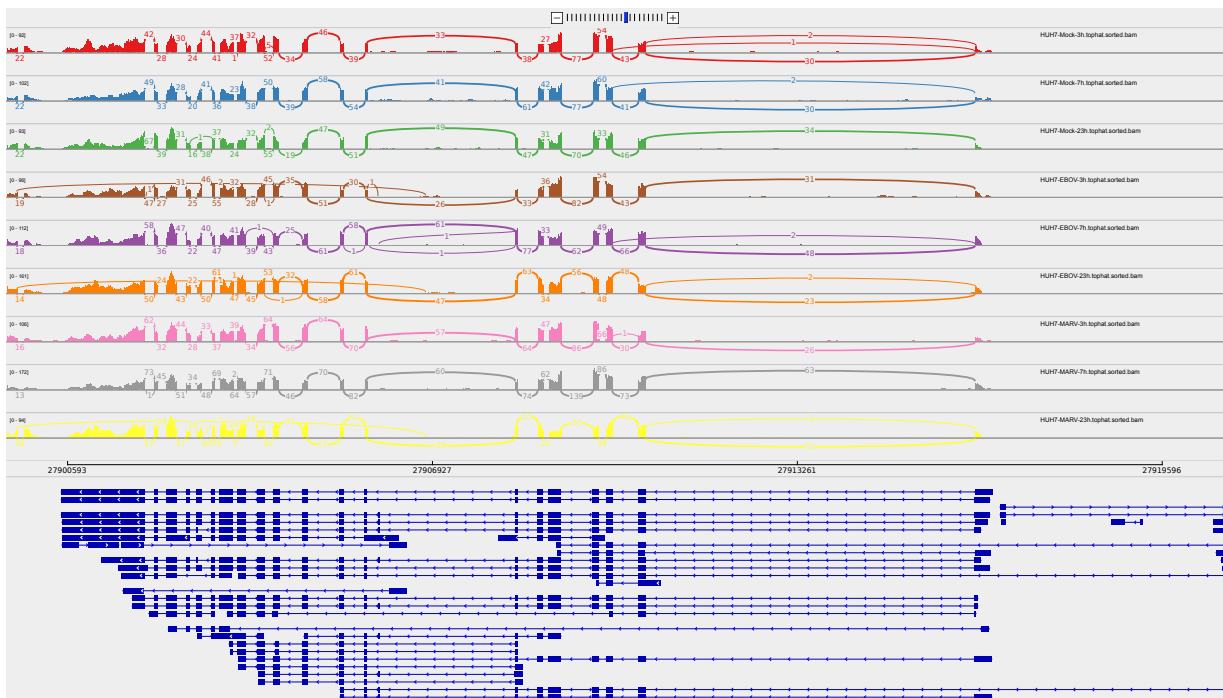


Figure 2: Sashimi plot of gene GIT1.

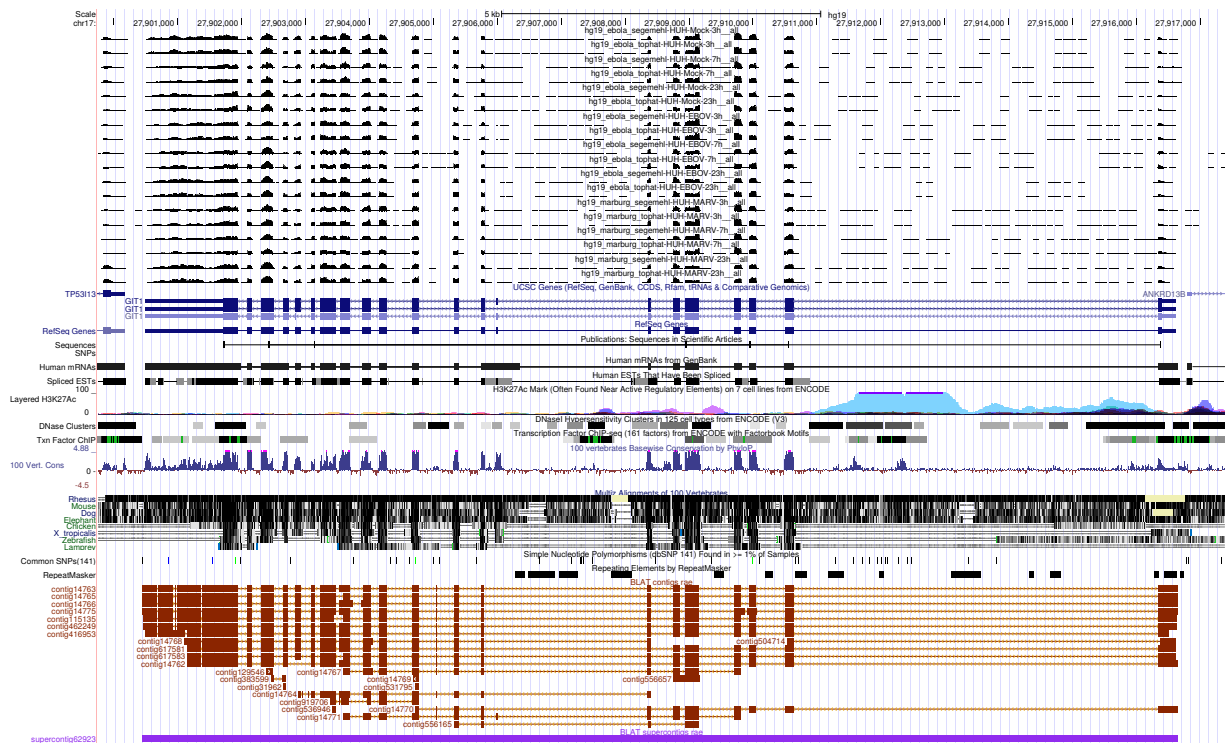


Figure 3: UCSC Genome Browser screenshot of gene GIT1.