

# 1 DAB2

homolog 2 (Drosophila) (DAB2) This gene encodes a mitogen-responsive phosphoprotein. It is expressed in normal ovarian epithelial cells, but is down-regulated or absent from ovarian carcinoma cell lines, suggesting its role as a tumor suppressor. This protein binds to the SH3 domains of GRB2, an adaptor protein that couples tyrosine kinase receptors to SOS (a guanine nucleotide exchange factor for Ras), via its C-terminal proline-rich sequences, and may thus modulate growth factor/Ras pathways by competing with SOS for binding to GRB2. Alternatively spliced transcript variants encoding different isoforms have been found for this gene.

This gene is normally expressed in human cells and not expressed in bat cells.

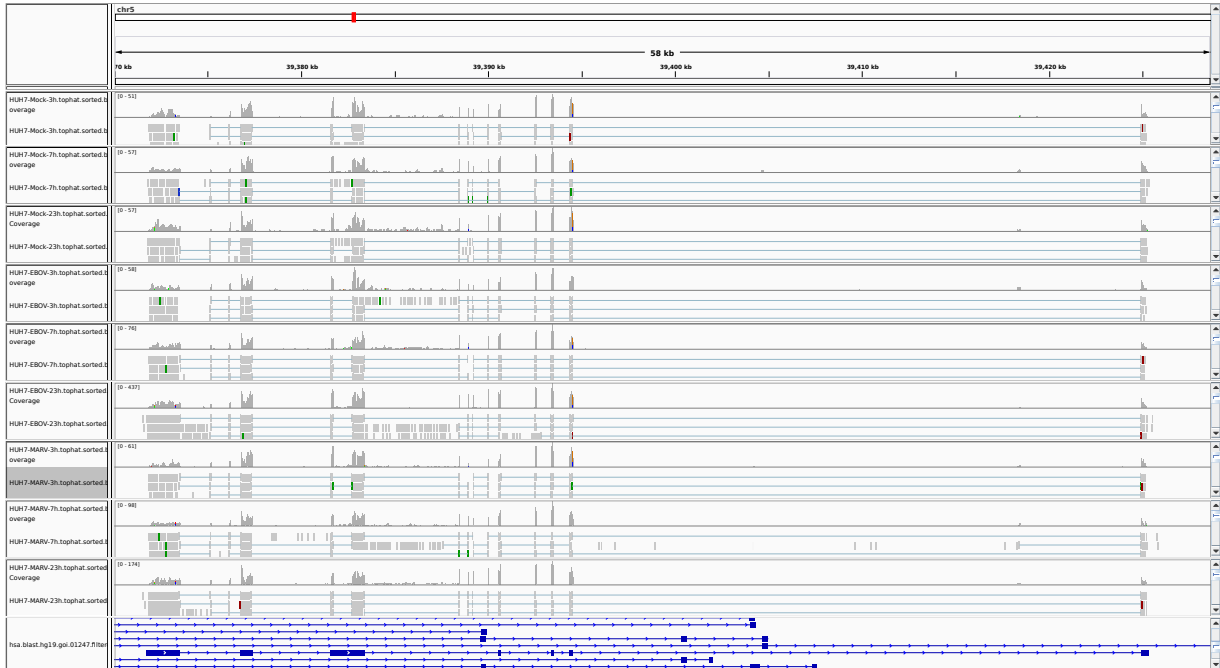


Figure 1: IGV Genome Browser screenshot of gene DAB2.

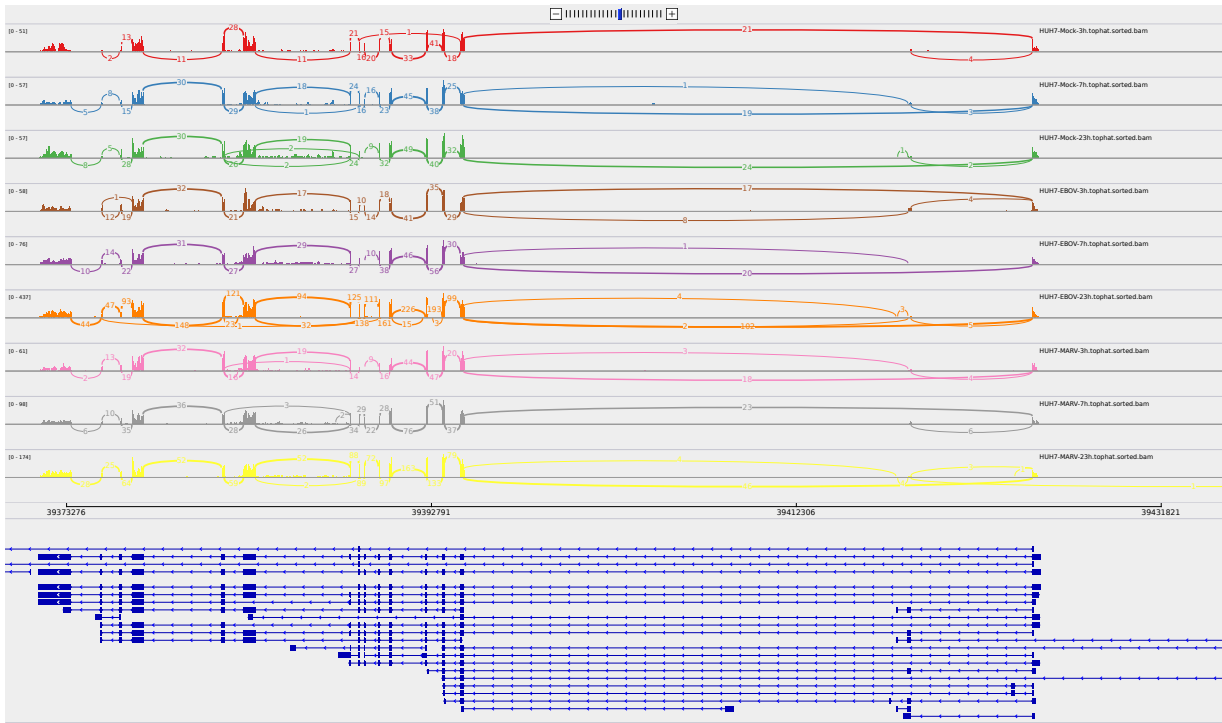


Figure 2: Sashimi plot of gene DAB2.

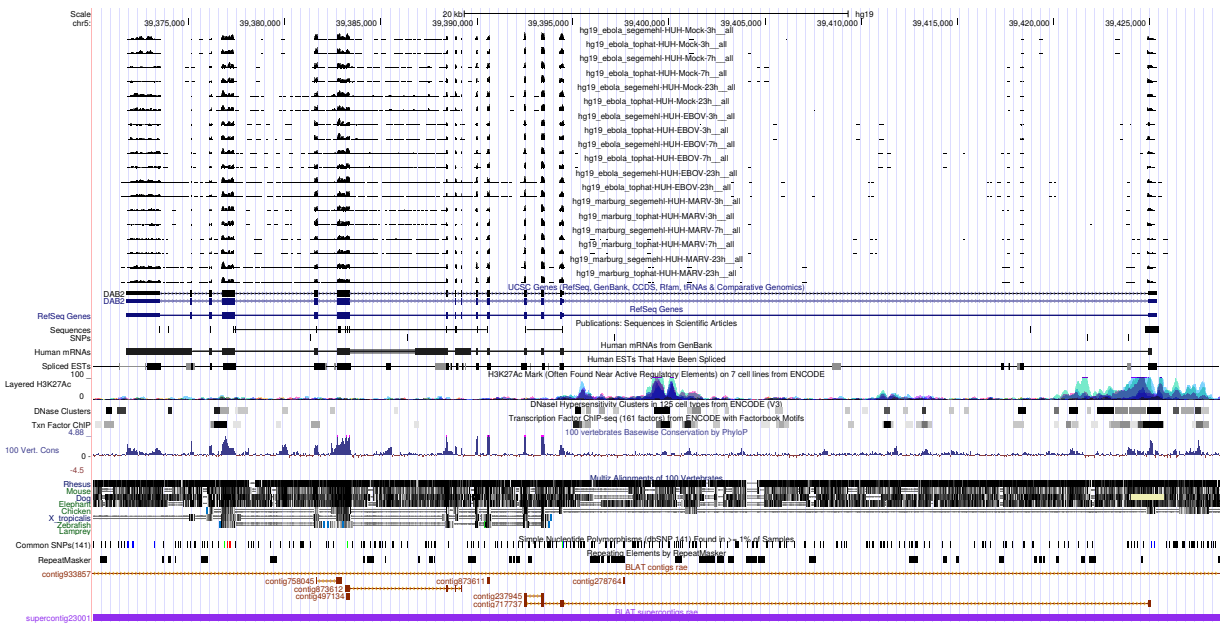


Figure 3: UCSC Genome Browser screenshot of gene DAB2.