

1 GRK6

This gene encodes a member of the guanine nucleotide-binding protein (G protein)-coupled receptor kinase subfamily of the Ser/Thr protein kinase family. The protein phosphorylates the activated forms of G protein-coupled receptors thus initiating their deactivation.

The gene is expressed in human and downregulated in Marburg infected cells after 23 h. The homolog is uniformly expressed in bat.

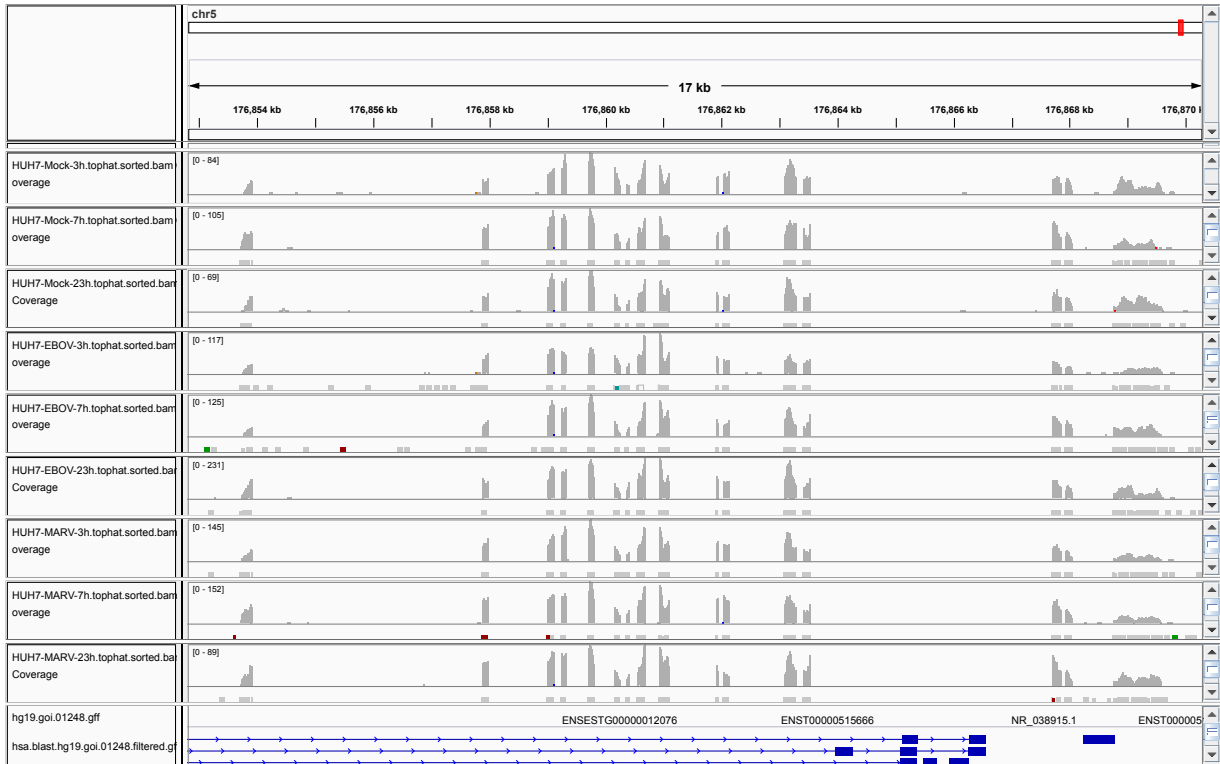


Figure 1: IGV Genome Browser screenshot of gene GRK6.

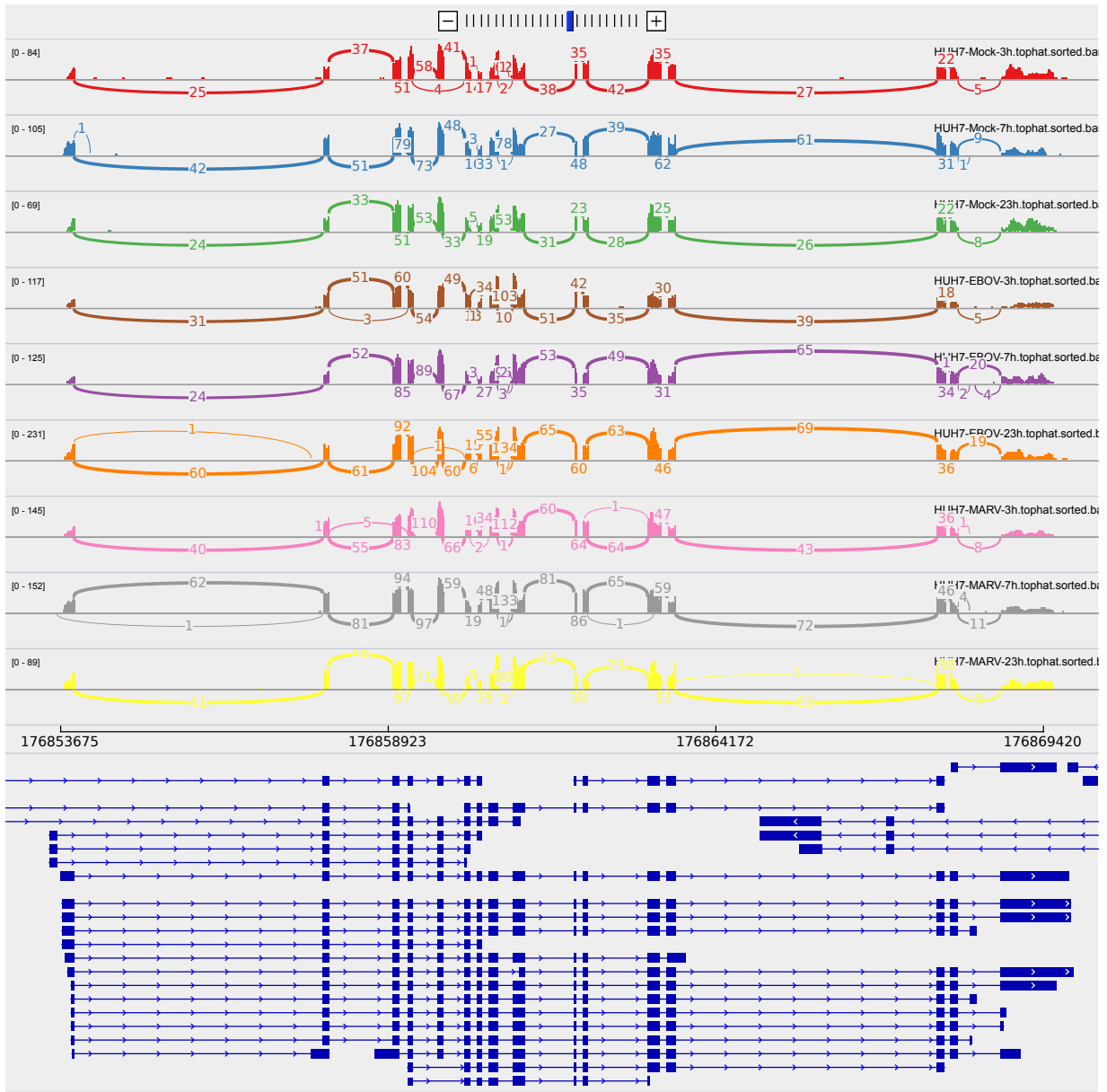


Figure 2: Sashimi plot of gene GRK6.

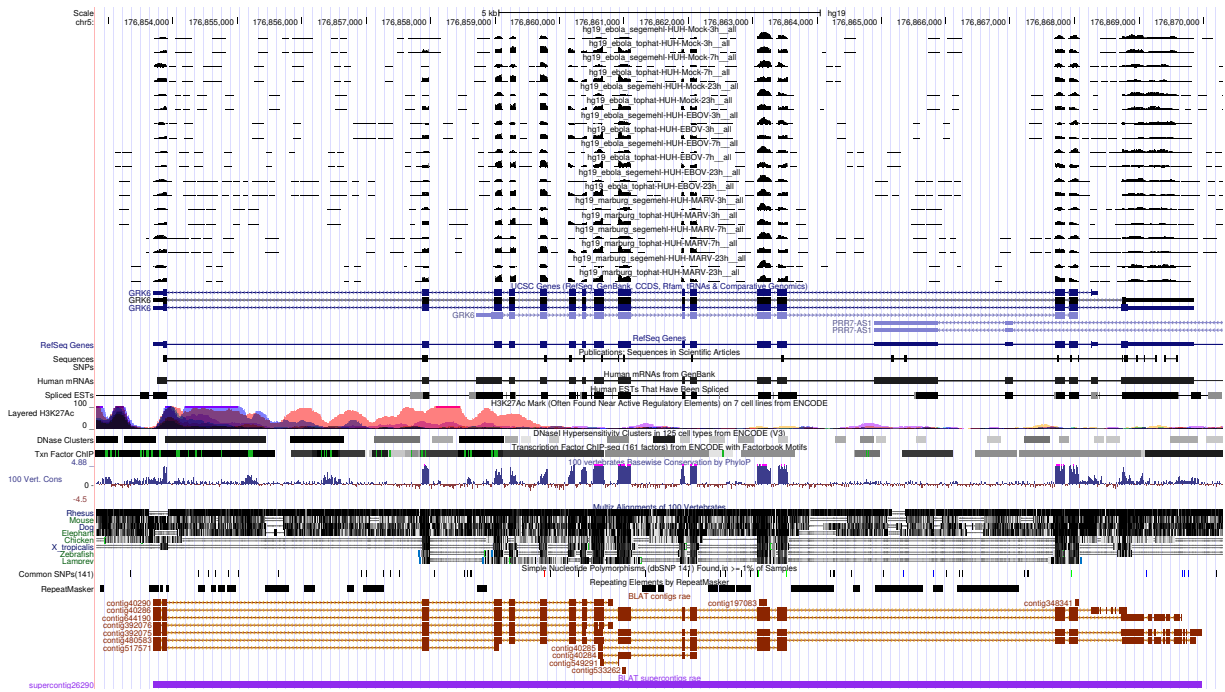


Figure 3: UCSC Genome Browser screenshot of gene GRK6.