

1 MTOR

The protein encoded by this gene belongs to a family of phosphatidylinositol kinase-related kinases. These kinases mediate cellular responses to stresses such as DNA damage and nutrient deprivation. This protein acts as the target for the cell-cycle arrest and immunosuppressive effects of the FKBP12-rapamycin complex. The ANGPTL7 gene is located in an intron of this gene.

The gene is slightly expressed in all conditions. There is some evidence for alternative splicing in the bat.

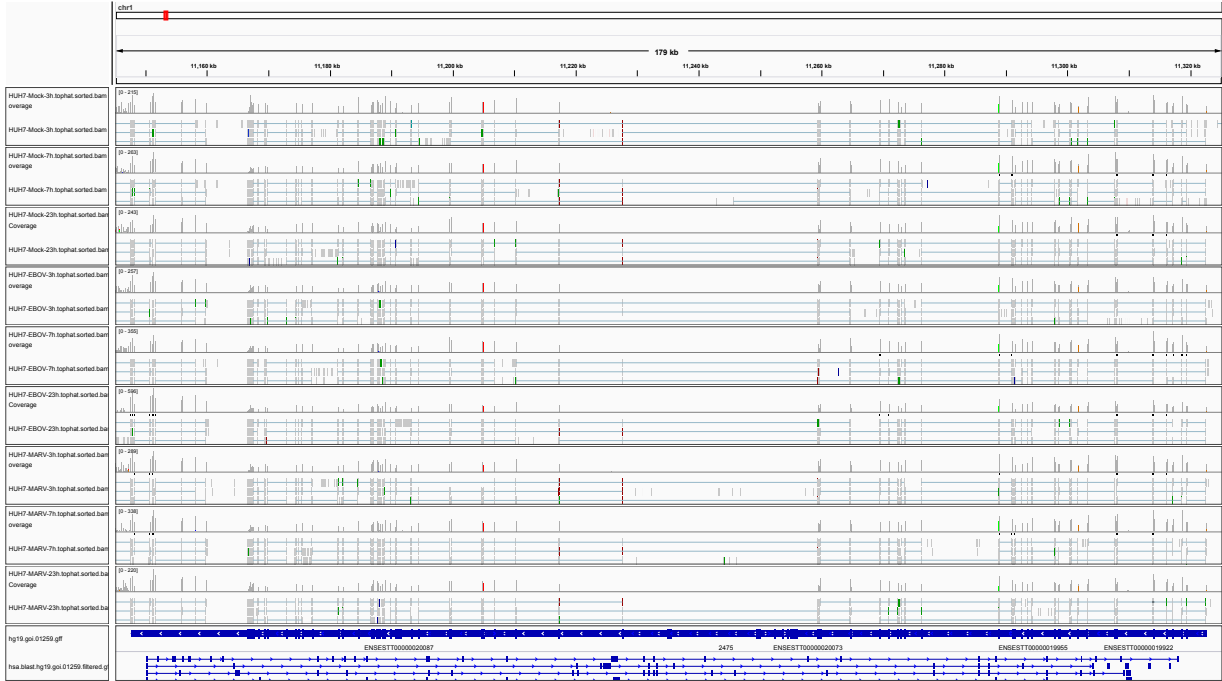


Figure 1: IGV Genome Browser screenshot of gene MTOR.

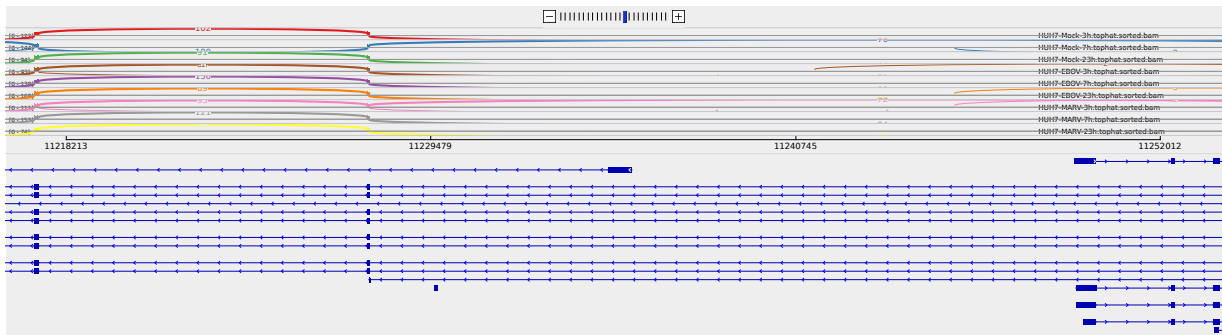


Figure 2: Sashimi plot of gene MTOR.

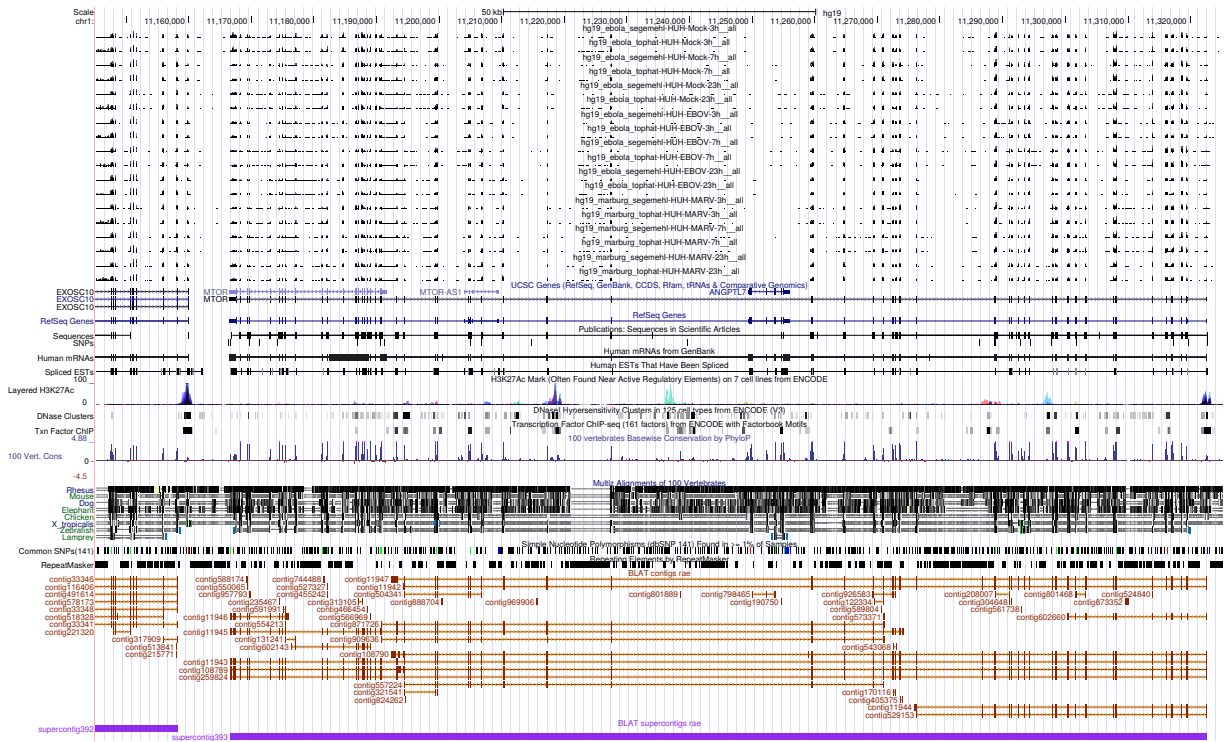


Figure 3: UCSC Genome Browser screenshot of gene MTOR.