

1 CHMP1A

This gene encodes a member of the CHMP/Chmp family of proteins which are involved in multivesicular body sorting of proteins to the interiors of lysosomes. The initial prediction of the protein sequence encoded by this gene suggested that the encoded protein was a metallopeptidase. The nomenclature has been updated recently to reflect the correct biological function of this encoded protein. Several transcripts encoding different isoforms have been found for this gene.

Expression in human is stable upon Ebola and Marburg infection, but apparently there are alternative isoforms involving exons 1 and 2. The bat homolog is expressed without variation.



Figure 1: IGV Genome Browser screenshot of gene CHMP1A.

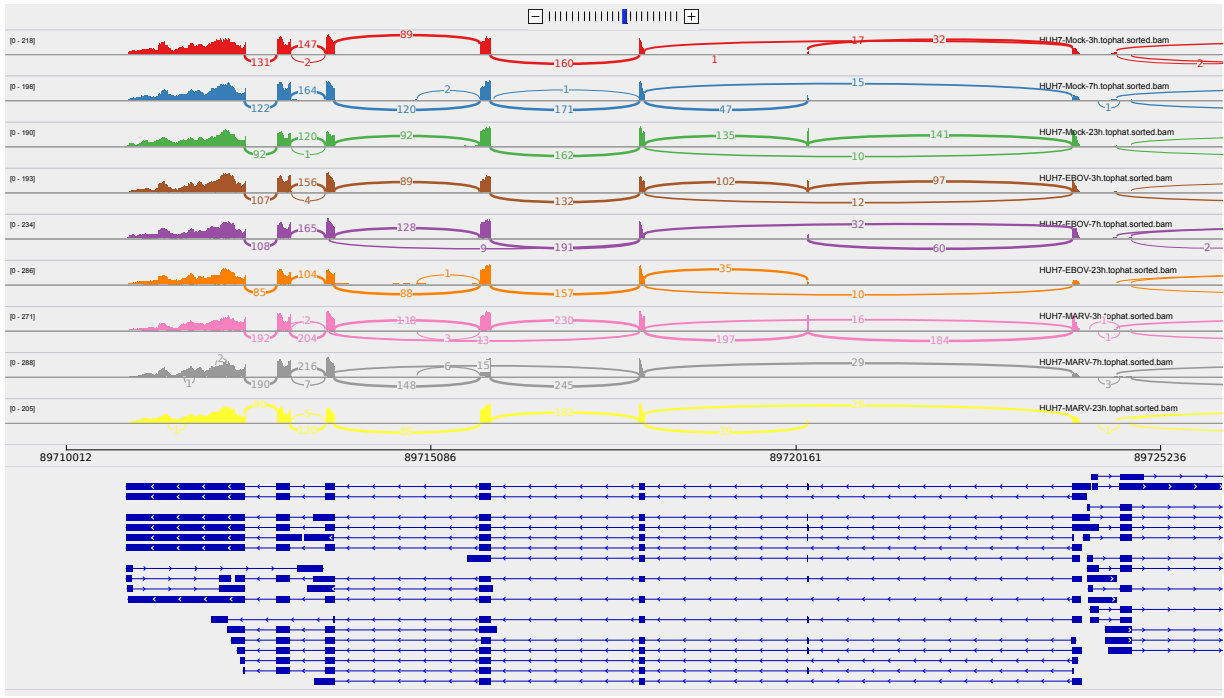


Figure 2: Sashimi plot of gene CHMP1A.

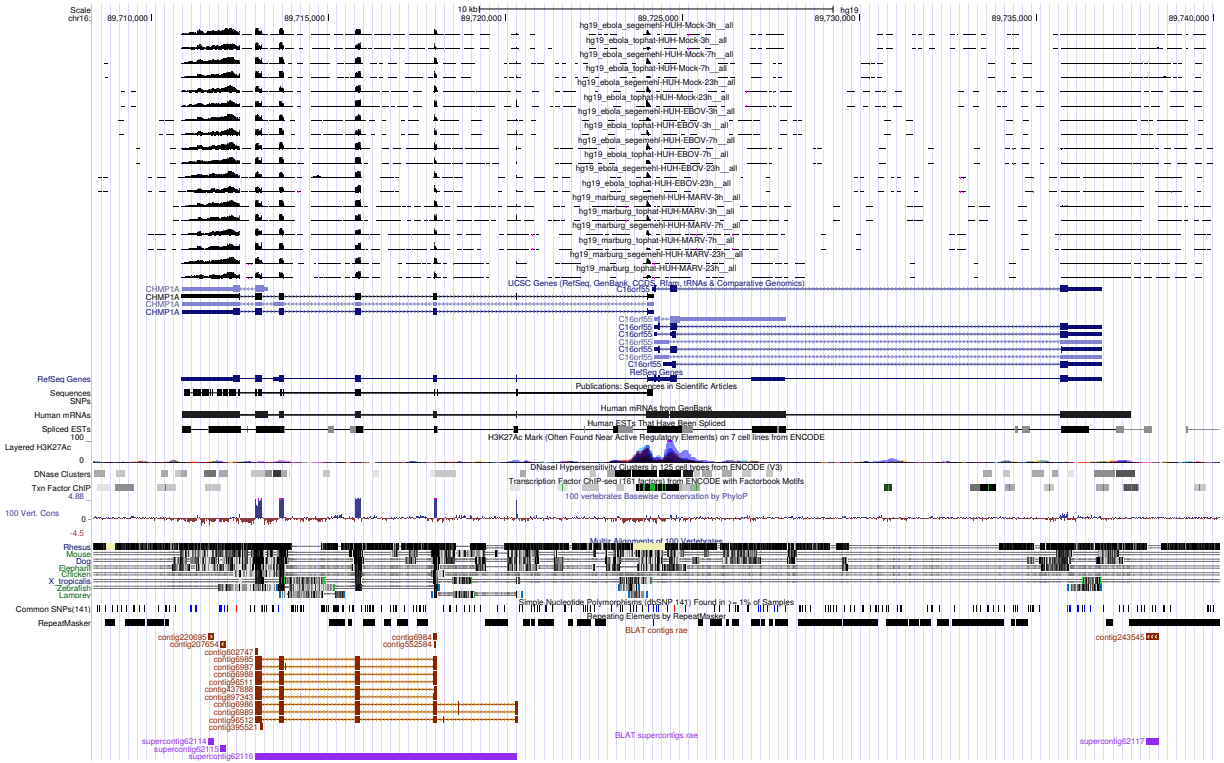


Figure 3: UCSC Genome Browser screenshot of gene CHMP1A.

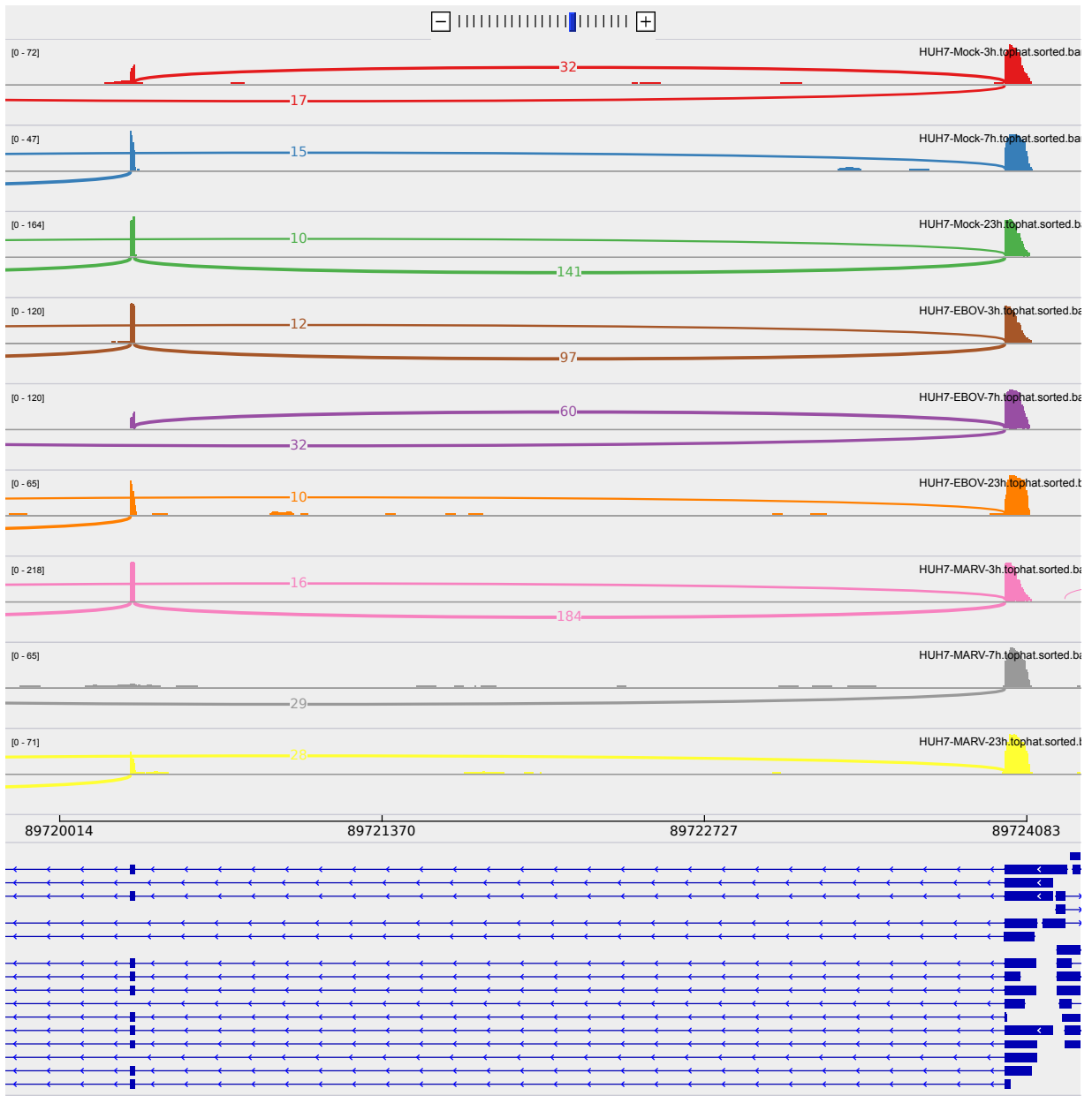


Figure 4: Different isoforms 5 prime, compare relative size of second exon to the left.