

# 1 ADRBK1

The product of this gene phosphorylates the beta-2-adrenergic receptor and appears to mediate agonist-specific desensitization observed at high agonist concentrations. This protein is an ubiquitous cytosolic enzyme that specifically phosphorylates the activated form of the beta-adrenergic and related G-protein-coupled receptors. Abnormal coupling of beta-adrenergic receptor to G protein is involved in the pathogenesis of the failing heart.

The gene is upregulated upon Ebola infection in human, but shows no significant expression changes in bat.

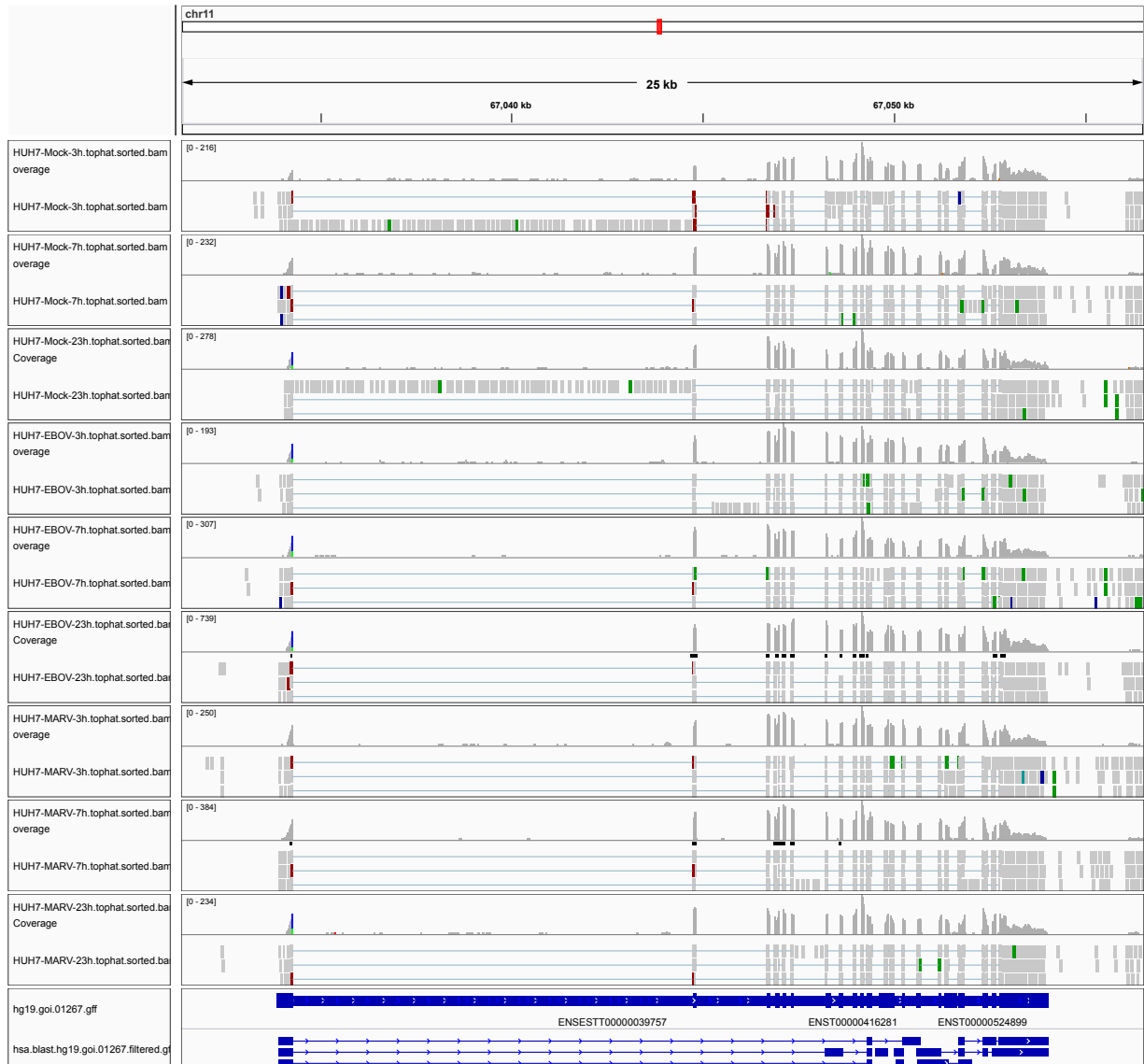


Figure 1: IGV Genome Browser screenshot of gene ADRBK1.

Figure 2: Sashimi plot of gene ADRBK1.

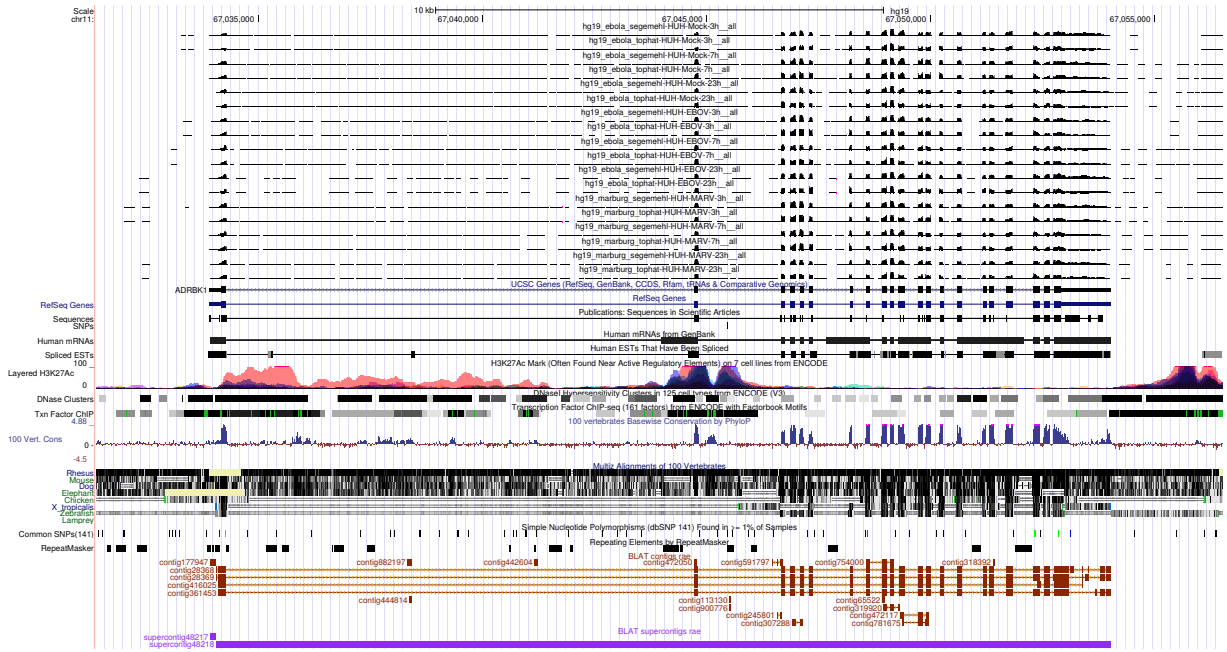


Figure 3: UCSC Genome Browser screenshot of gene ADRBK1.