

1 VPS37A

This gene belongs to the VPS37 family, and encodes a component of the ESCRT-I (endosomal sorting complex required for transport I) protein complex, required for the sorting of ubiquitinated transmembrane proteins into internal vesicles of multivesicular bodies. Expression of this gene is downregulated in hepatocellular carcinoma, and mutations in this gene are associated with autosomal recessive spastic paraplegia-53. Gene is upregulated in human EBOV 7h, but expression goes down again at 23h, and downregulated in bat EBOV7h.

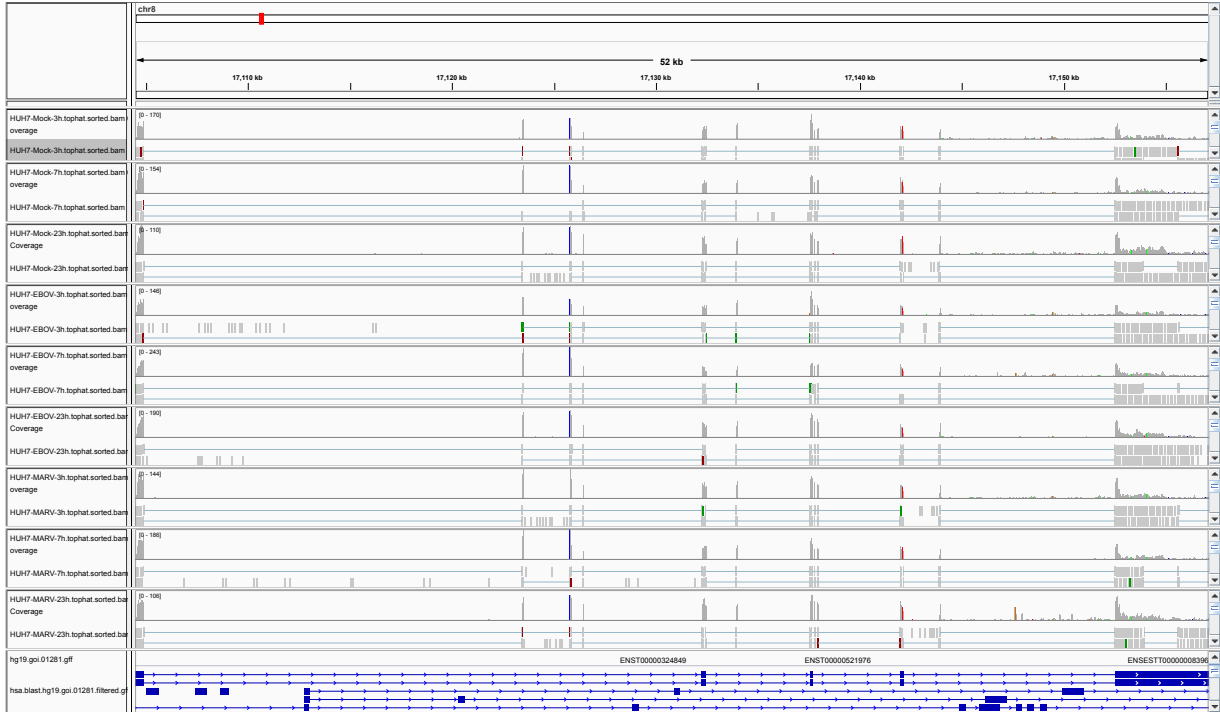


Figure 1: IGV Genome Browser screenshot of gene VPS37A.

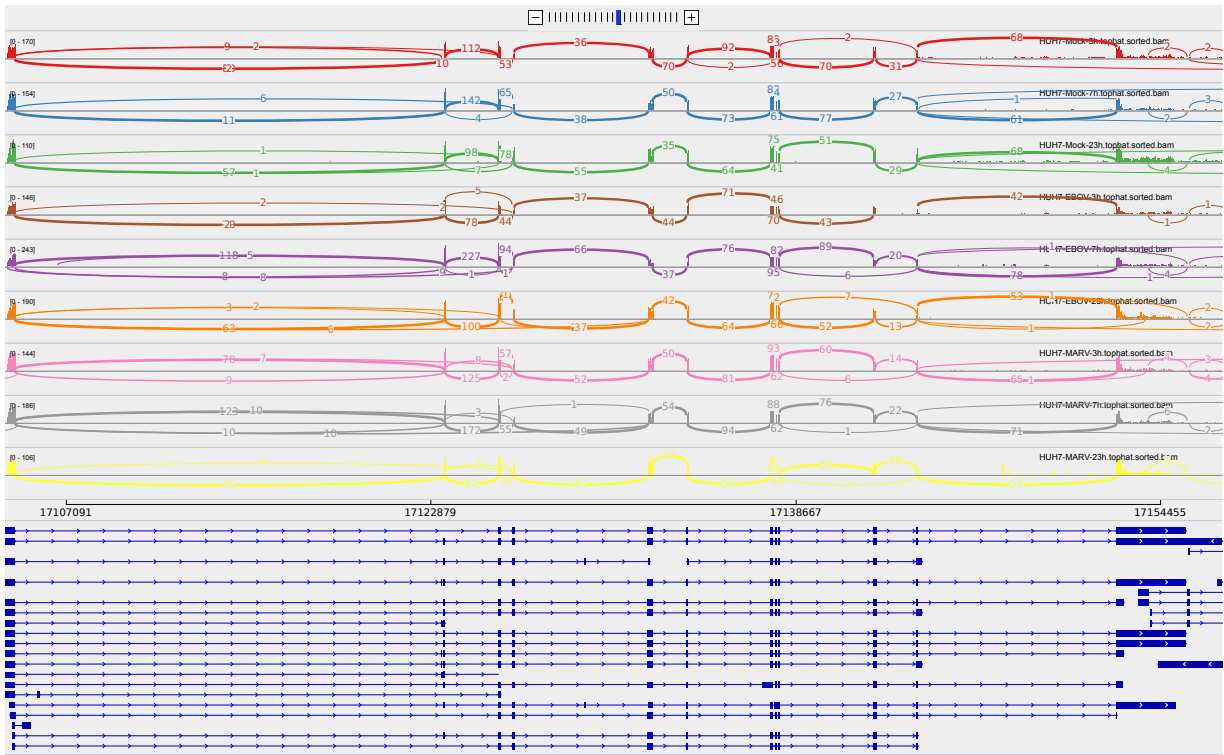


Figure 2: Sashimi plot of gene VPS37A.

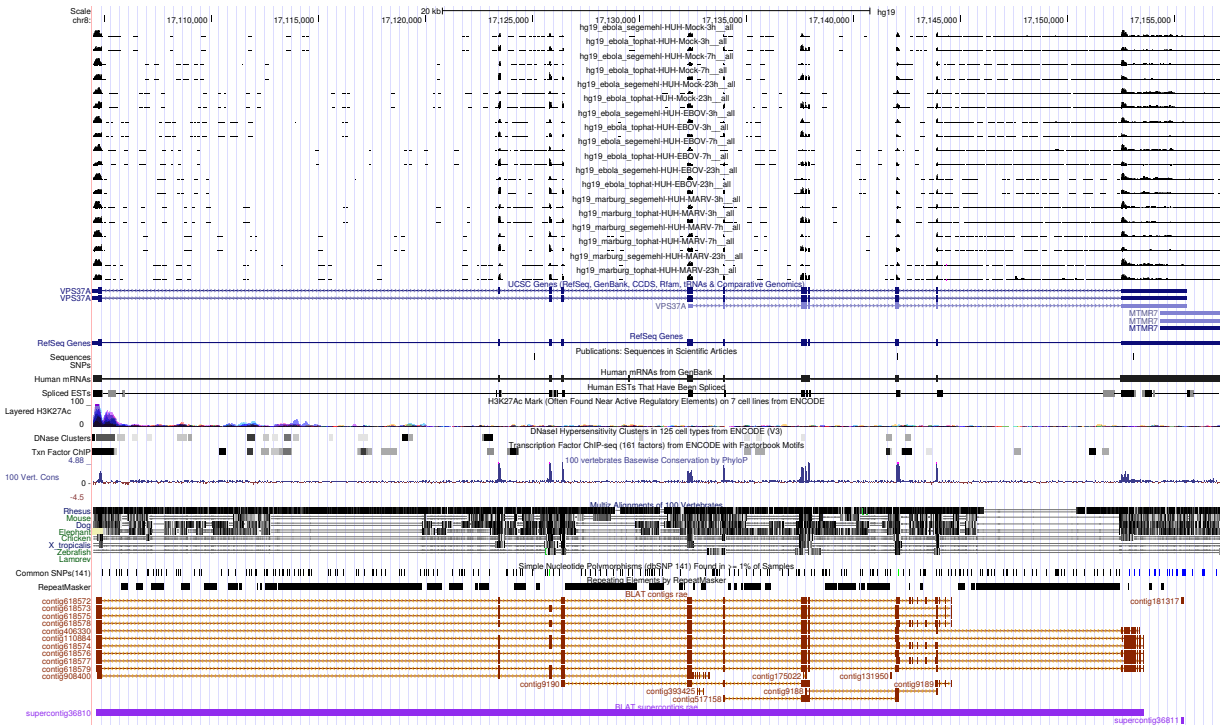


Figure 3: UCSC Genome Browser screenshot of gene VPS37A.