

1 ARFGAP2

Homo sapiens ADP-ribosylation factor GTPase activating protein 2 (ARFGAP2). This gene is normally expressed in human cells, with a small drop in expression at 23h-MARV-infected samples. The gene is uniformly weak expressed in all bat samples except for MARV-infected samples, where a steady increase (to normal levels) can be seen.

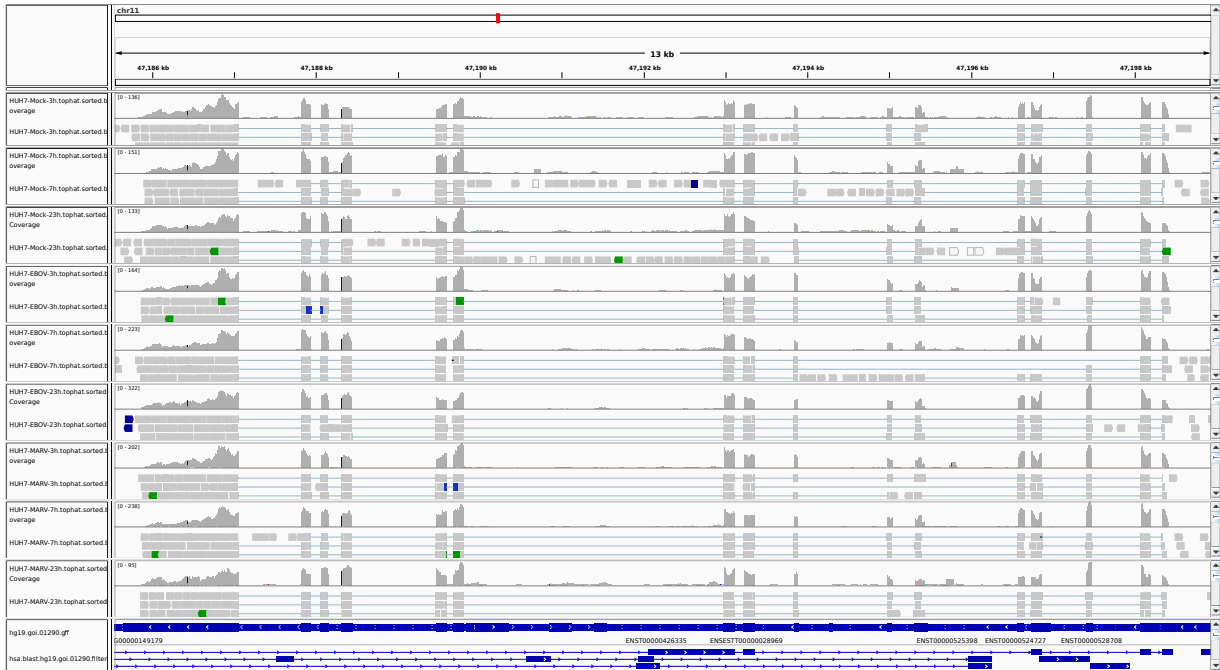


Figure 1: IGV Genome Browser screenshot of gene ARFGAP2.

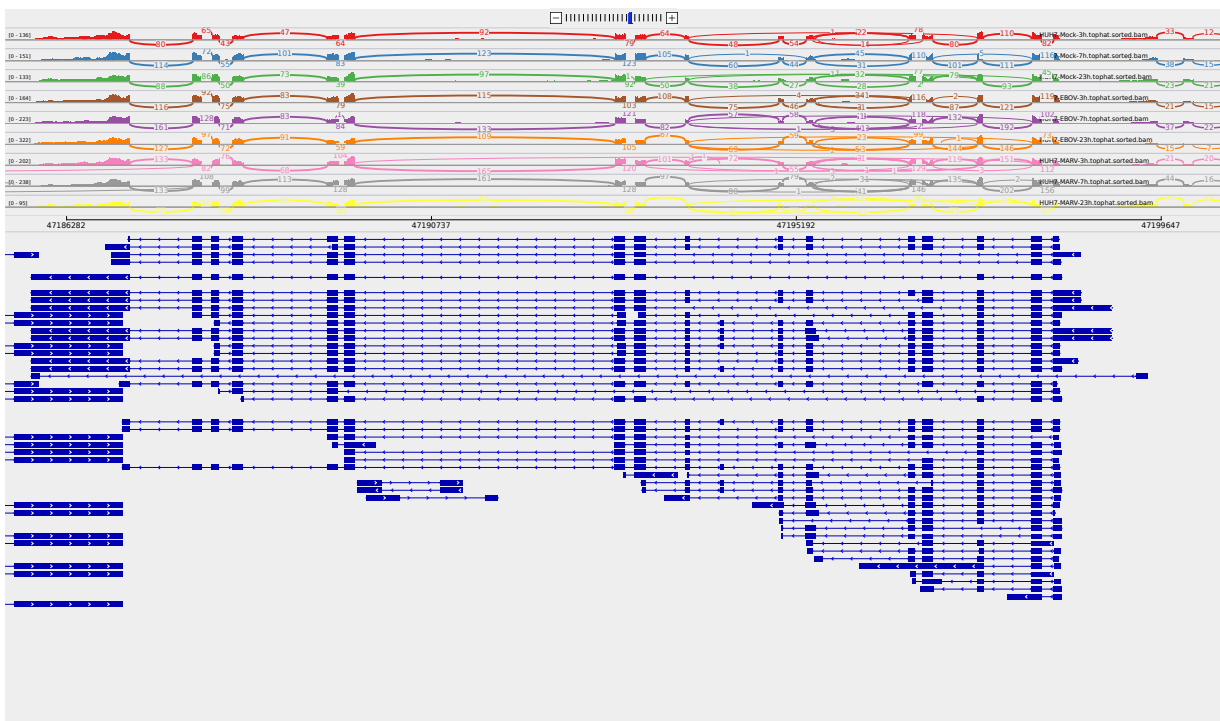


Figure 2: Sashimi plot of gene ARFGAP2.

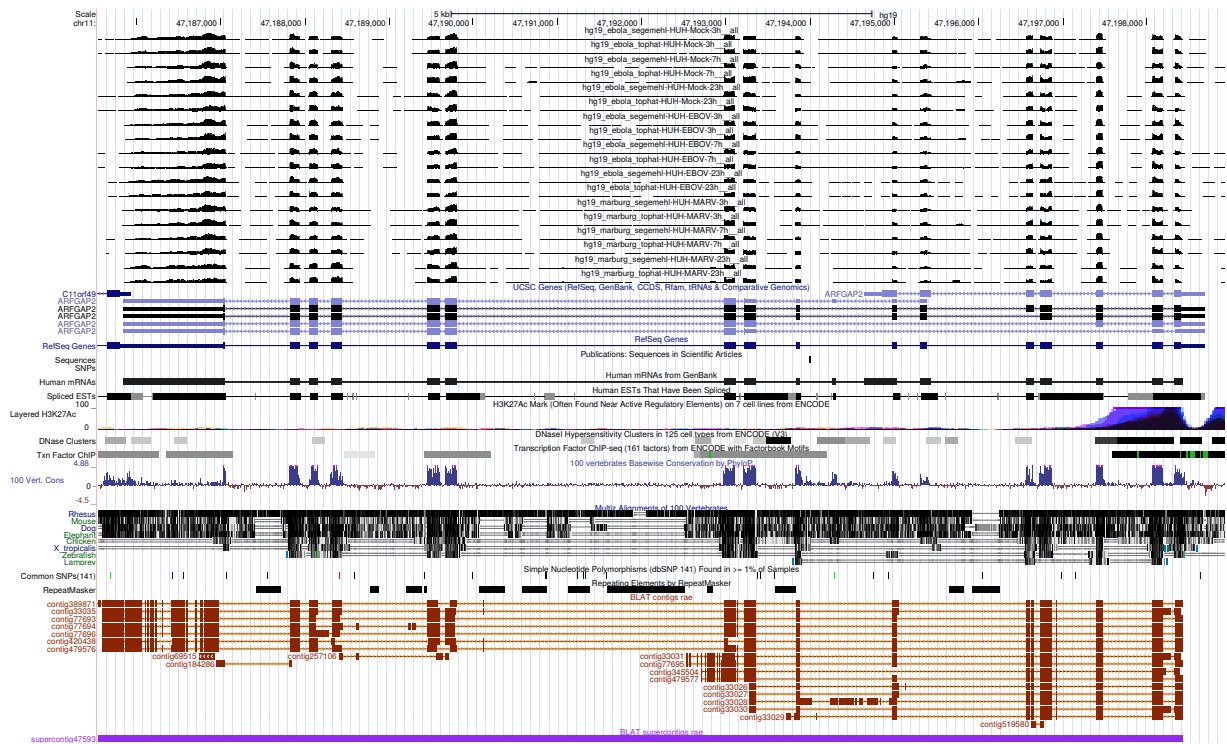


Figure 3: UCSC Genome Browser screenshot of gene ARFGAP2.