

1 ACTR3

The specific function of this gene has not yet been determined; however, the protein it encodes is known to be a major constituent of the ARP2/3 complex. This complex is located at the cell surface and is essential to cell shape and motility through lamellipodial actin assembly and protrusion. The gene is uniformly expressed in human, but shows an additional splice site in EBOV 3h (10% of the alternative splice sites). It is highly but uniformly expressed in bat.

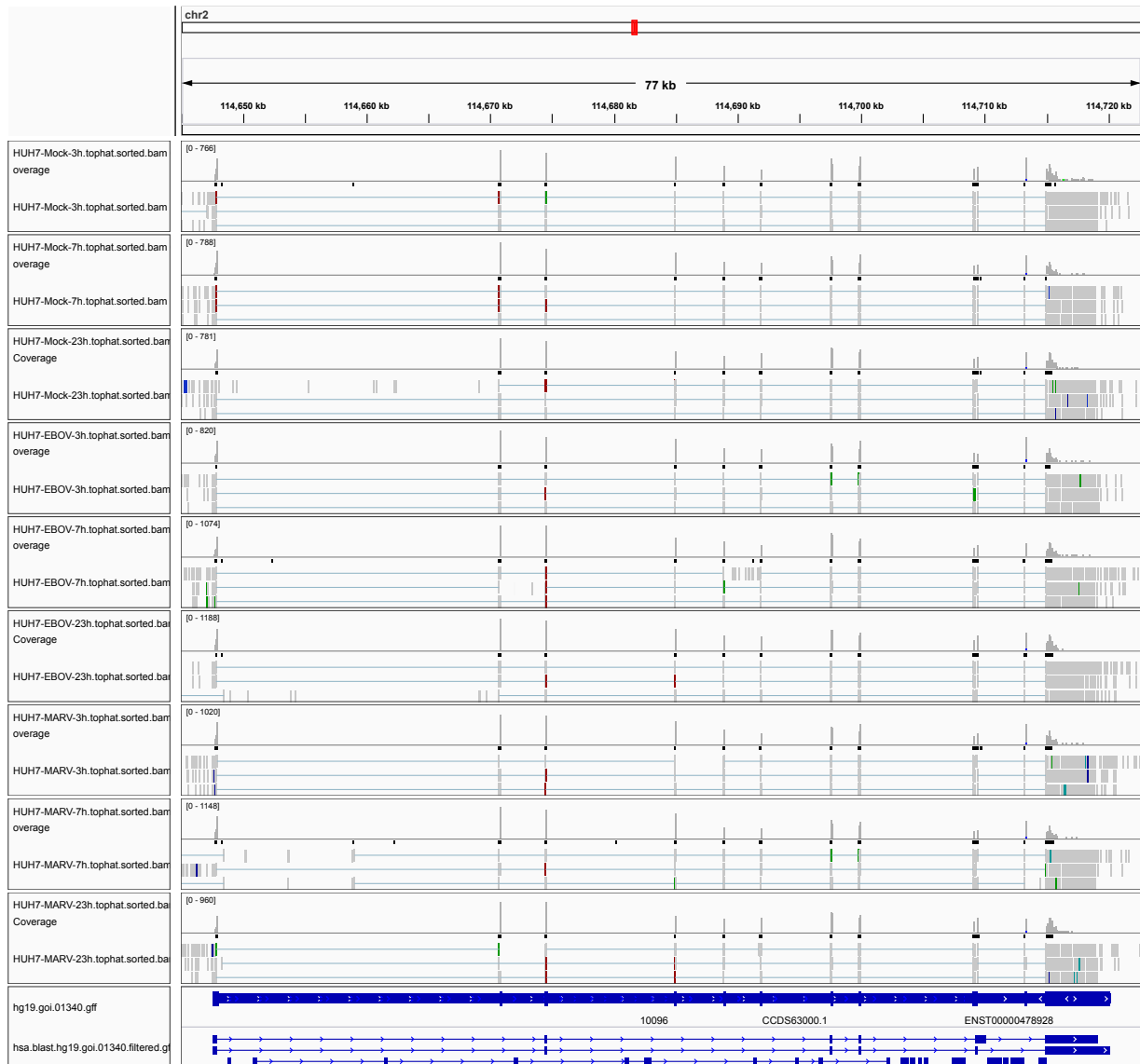


Figure 1: IGV Genome Browser screenshot of gene ACTR3.

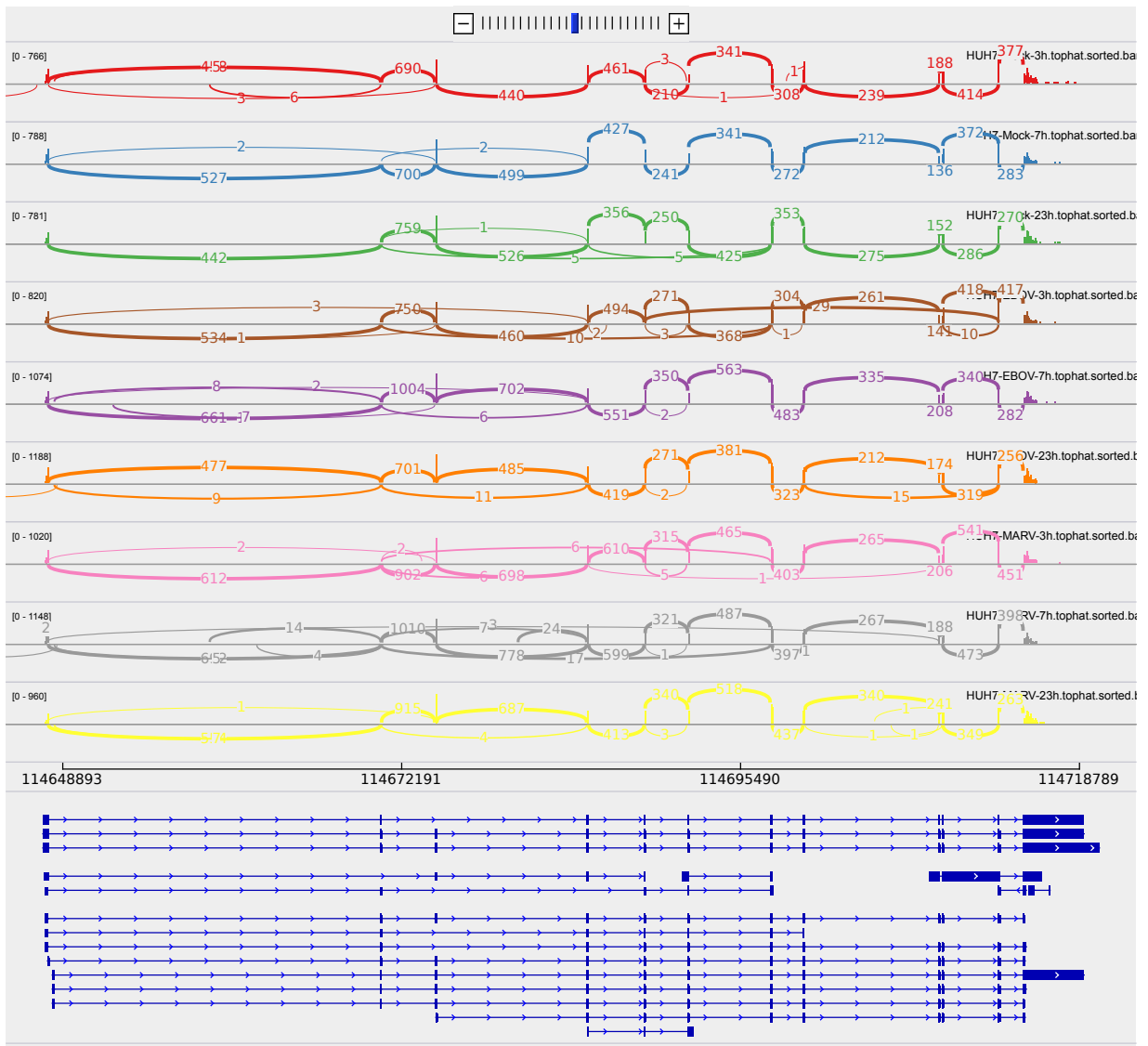


Figure 2: Sashimi plot of gene ACTR3.

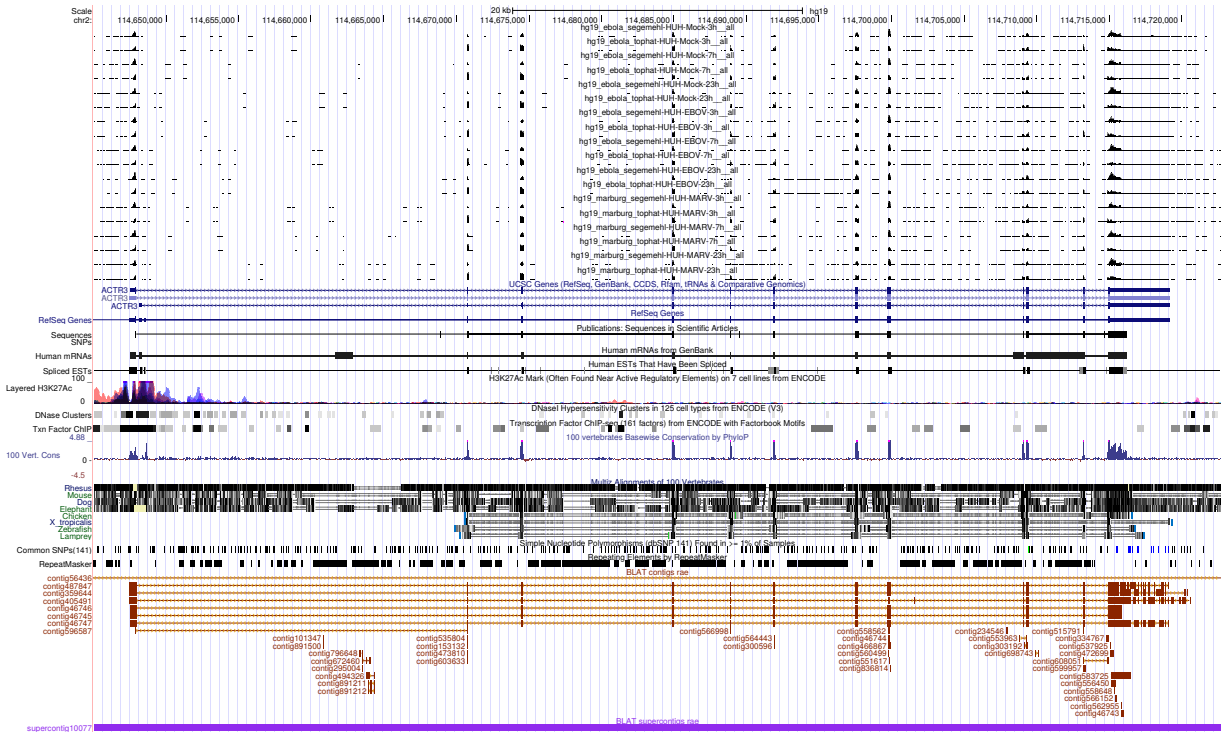


Figure 3: UCSC Genome Browser screenshot of gene ACTR3.