

1 EPS15

This gene encodes a protein that is part of the EGFR pathway. The protein is present at clatherin-coated pits and is involved in receptor-mediated endocytosis of EGF. Notably, this gene is rearranged with the HRX/ALL/MLL gene in acute myelogenous leukemias. Uniformly expressed in human. Highly expressed in bat, with a slight increase in MARV 23h compared to 3h.

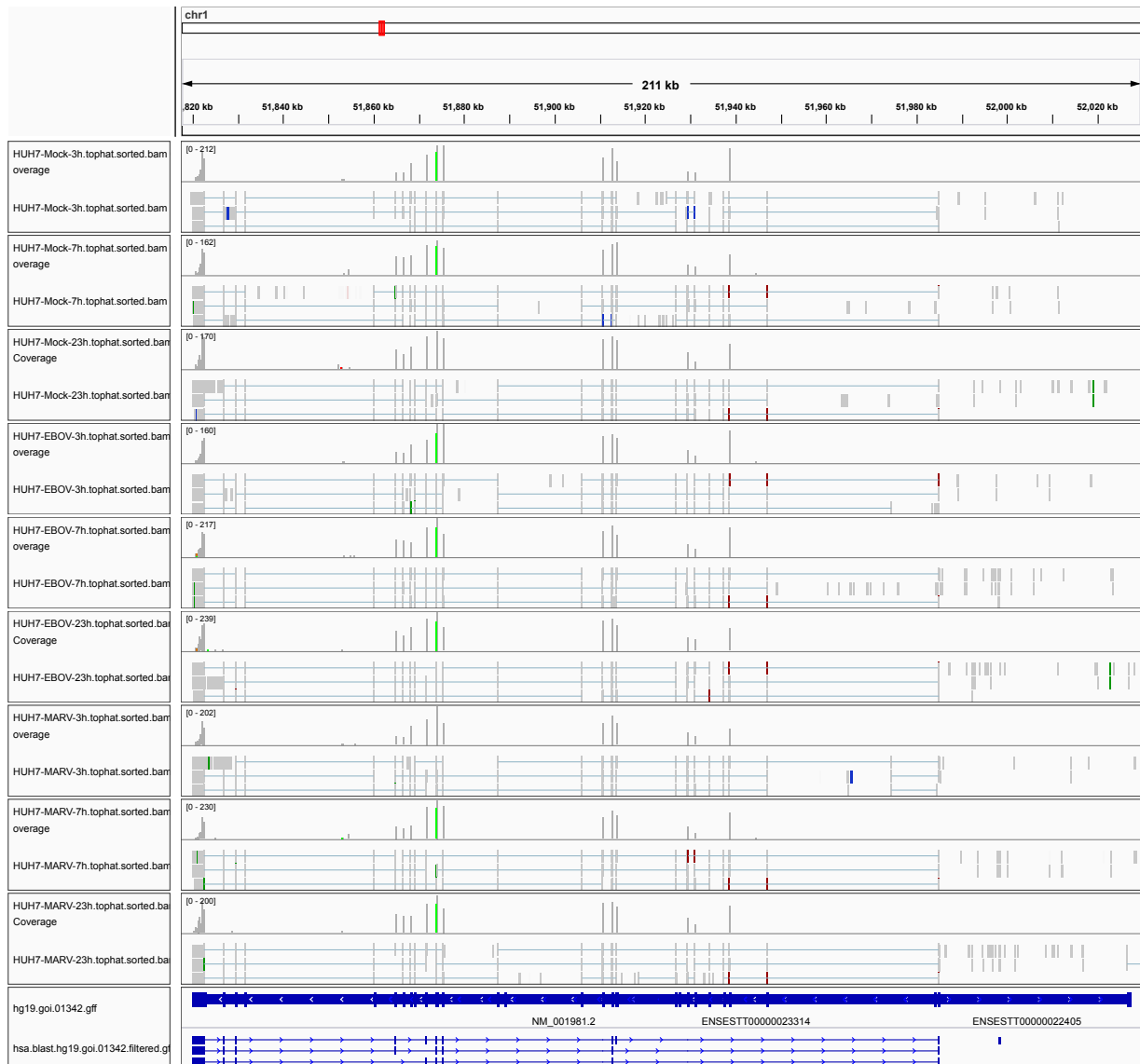


Figure 1: IGV Genome Browser screenshot of gene EPS15.

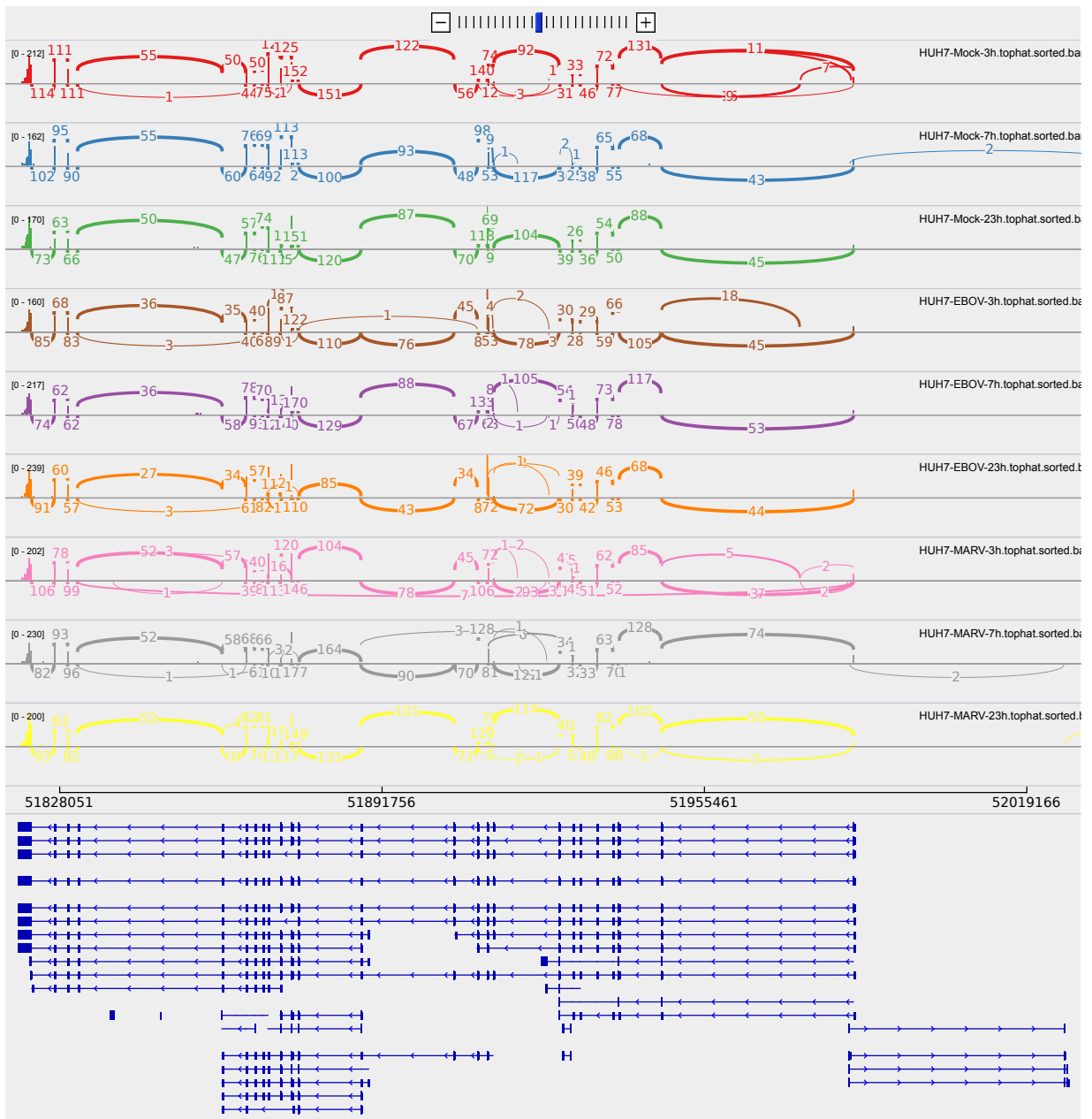


Figure 2: Sashimi plot of gene EPS15.

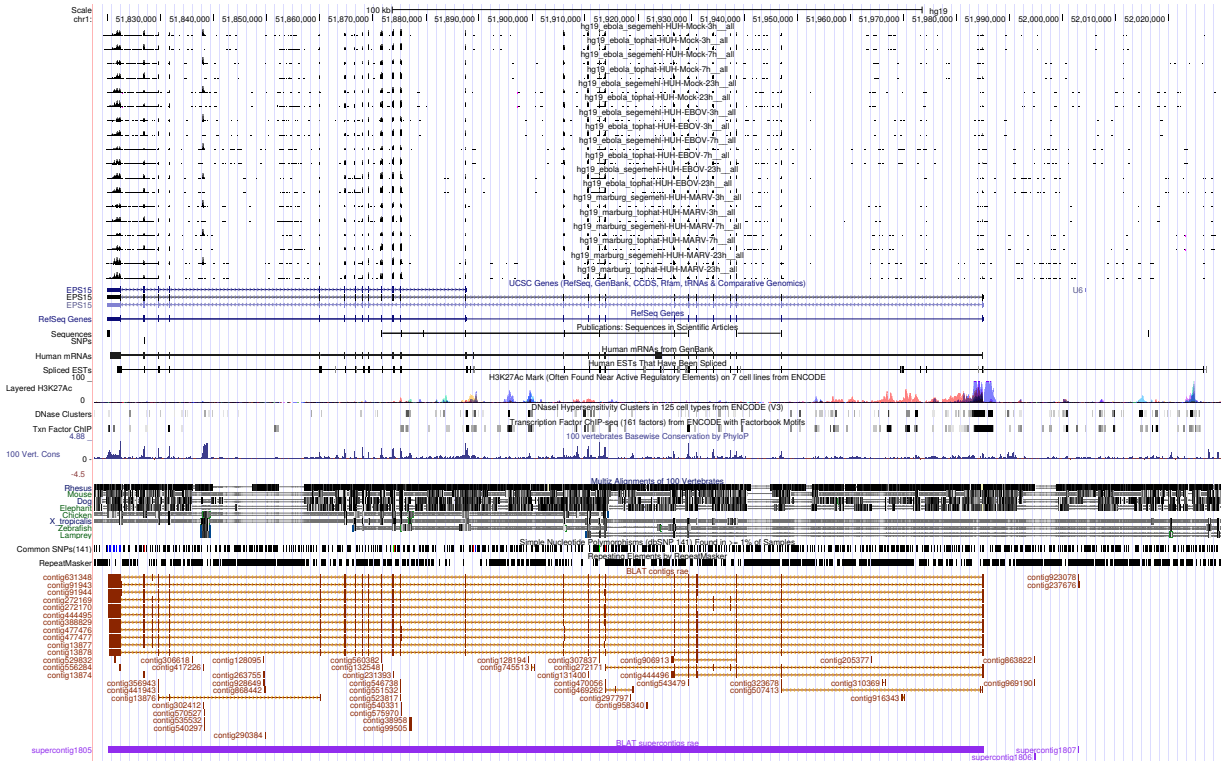


Figure 3: UCSC Genome Browser screenshot of gene *EPS15*.