

1 GIT2

The G protein-coupled receptor kinase interacting ArfGAP 2 gene is involved in Endocytosis. There was no particularly interesting differential expression pattern in the samples analyzed.

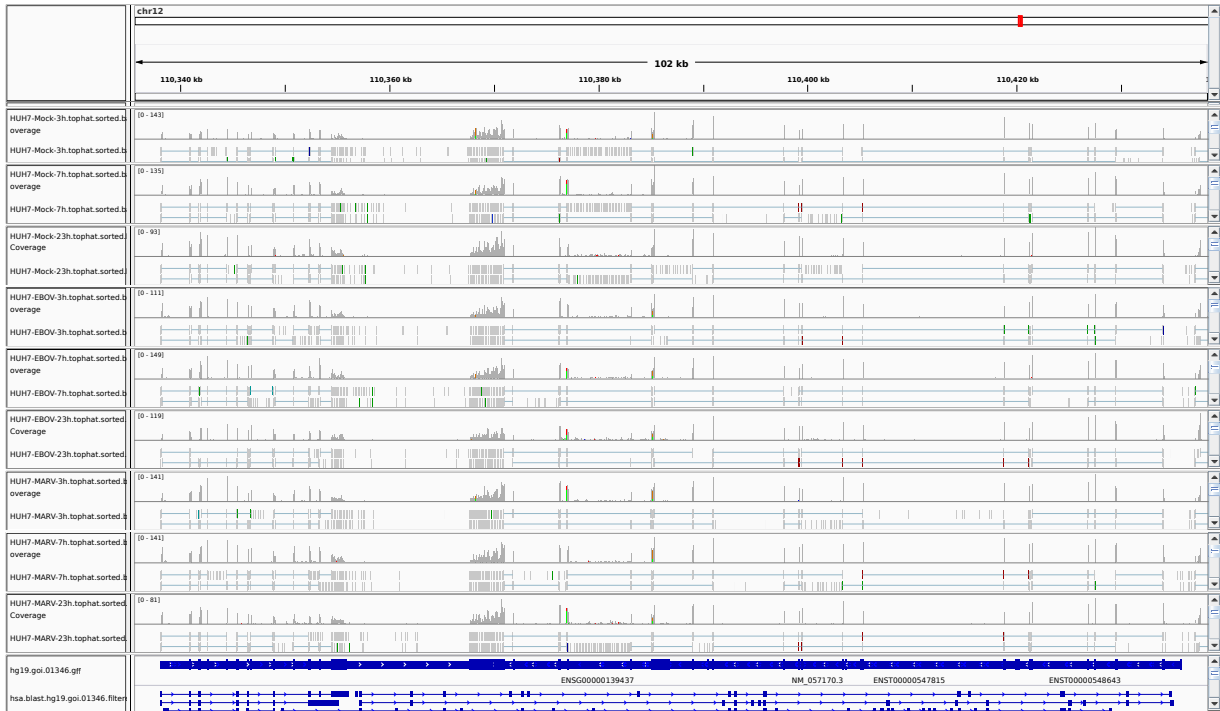


Figure 1: IGV Genome Browser screenshot of gene GIT2.



Figure 2: Sashimi plot of gene GIT2.

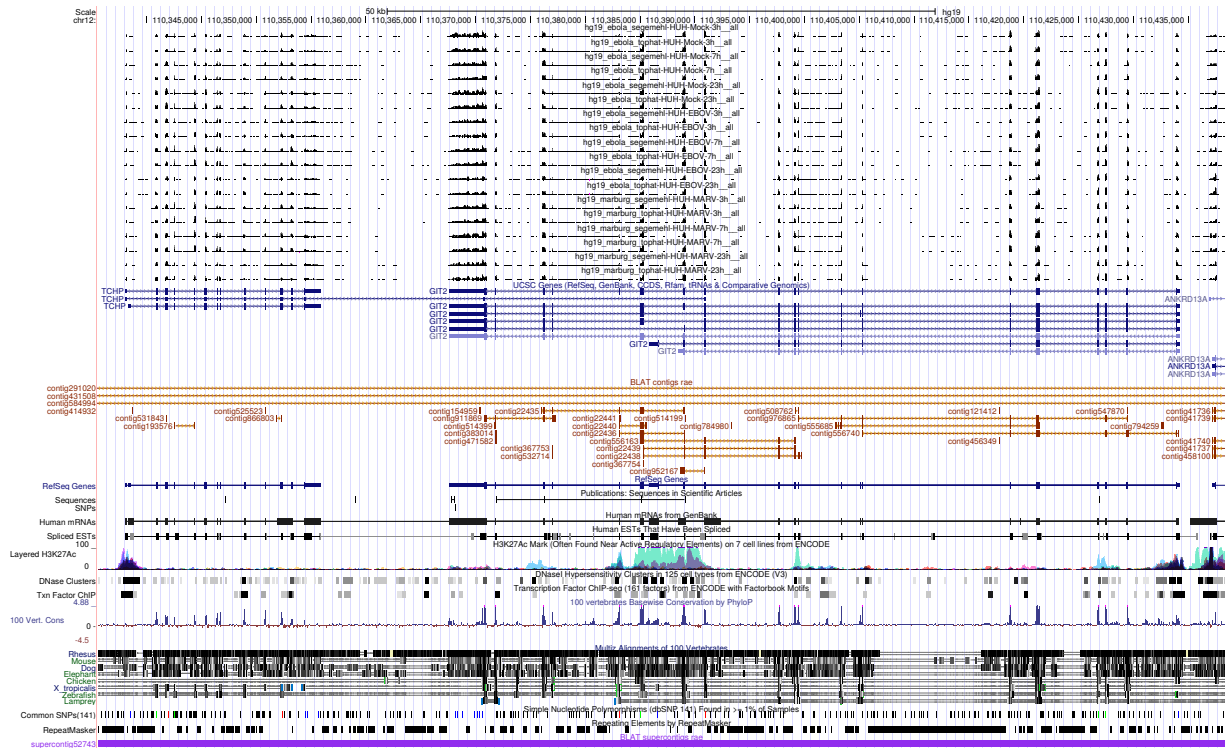


Figure 3: UCSC Genome Browser screenshot of gene *GIT2*.