

1 TSC1

This gene encodes a growth inhibitory protein thought to play a role in the stabilization of tuberin. Mutations in this gene have been associated with tuberous sclerosis. Alternative splicing results in multiple transcript variants.

This gene was expressed in all probes. A slight upregulation was observed in he Ebola and Marburg infected 23h probes in Human.

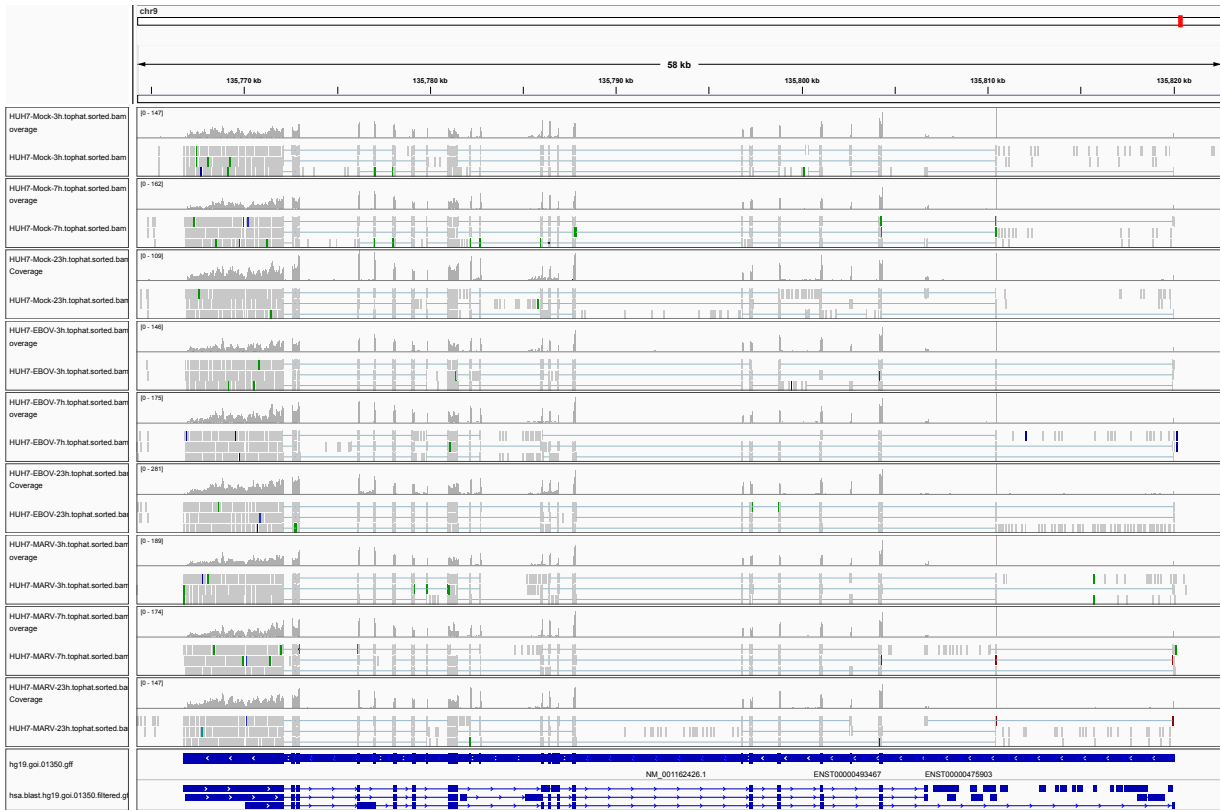


Figure 1: IGV Genome Browser screenshot of gene TSC1.

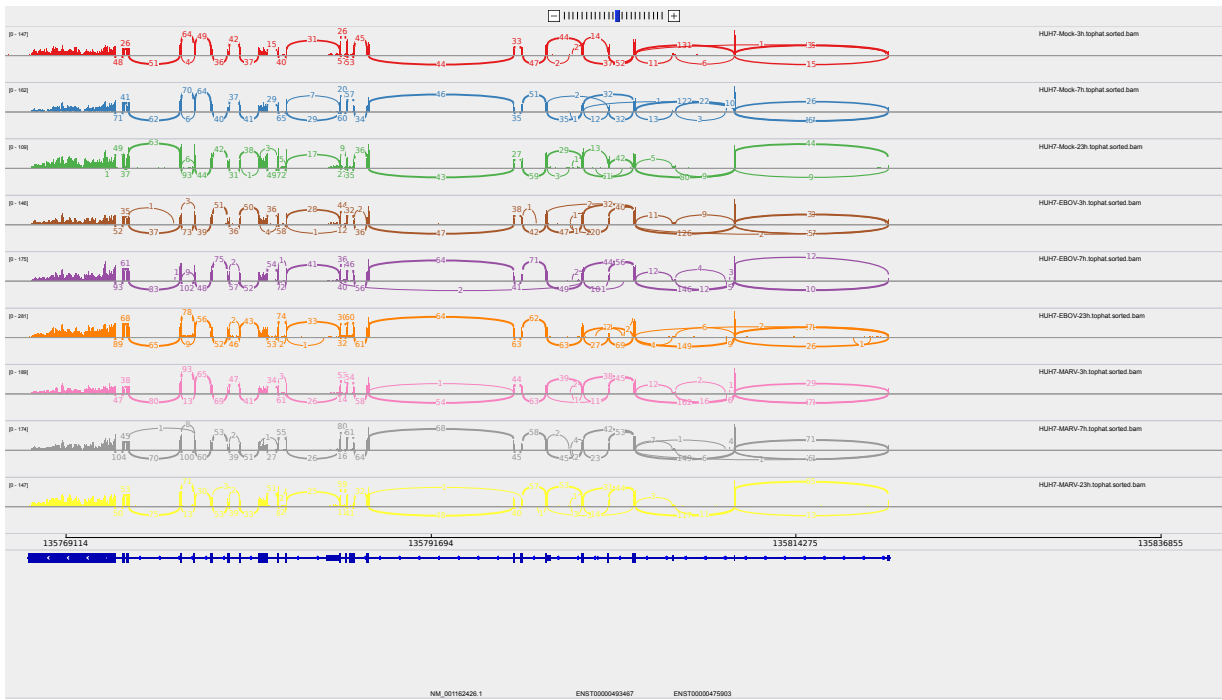


Figure 2: Sashimi plot of gene TSC1.

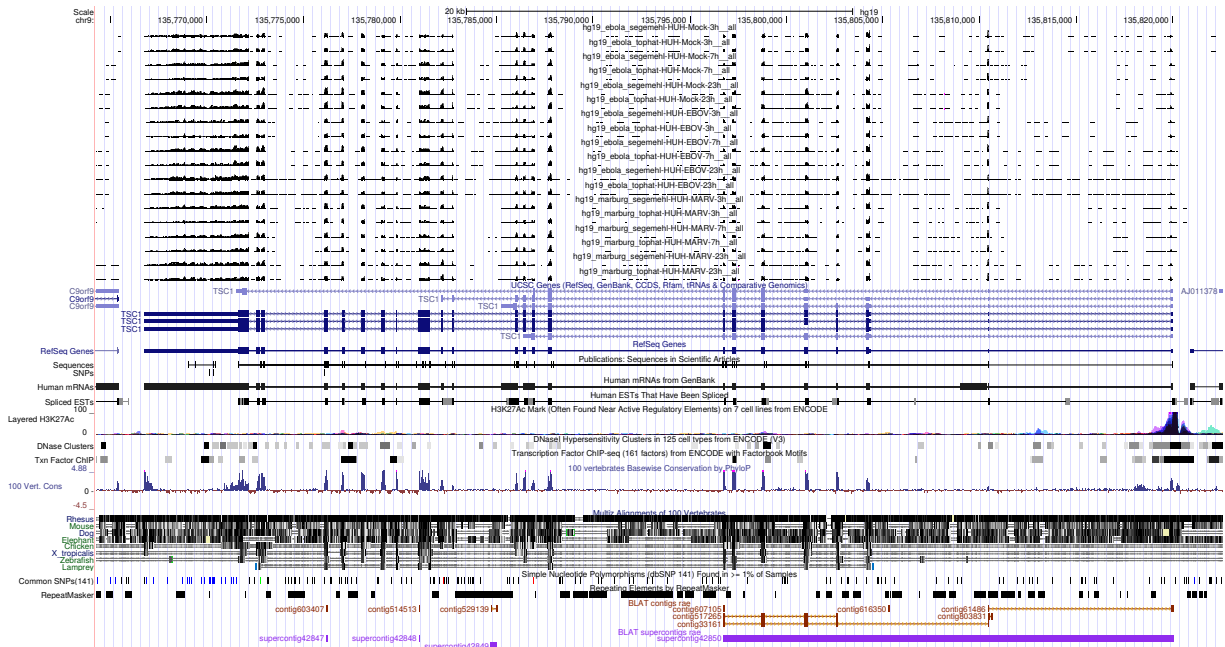


Figure 3: UCSC Genome Browser screenshot of gene TSC1.