

1 IRS1

The insulin receptor substrate 1 is involved in the cGMP-PKG, FoxO, mTOR, PI3K-Akt, AMPK, Neutrophin, Insulin and Adipocytokine signaling pathways. It is also related to Type II diabetes mellitus, Non-alcoholic fatty liver disease (NAFLD), Aldosterone-regulated sodium reabsorption and MicroRNAs in cancer. It seems to be slightly downregulated after 23 hours of Marburg infection in humans.

Figure 1: IGV Genome Browser screenshot of gene IRS1.

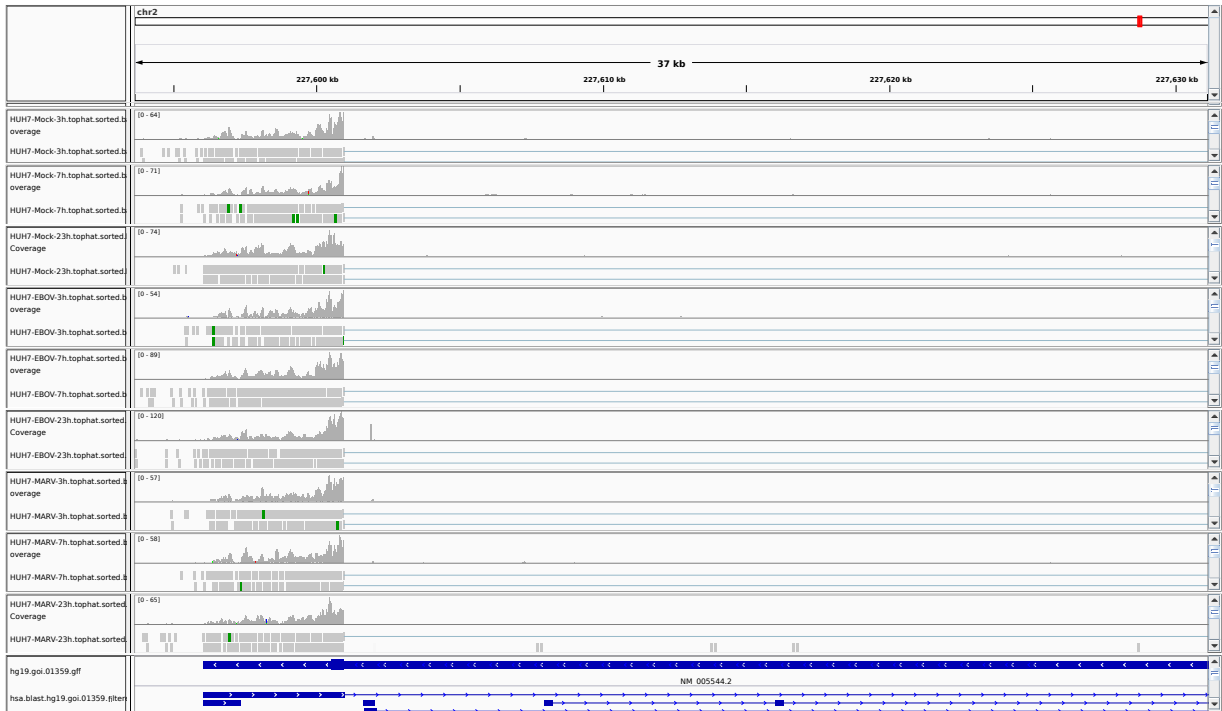


Figure 2: IGV Genome Browser screenshot of gene IRS1, zoom left side.

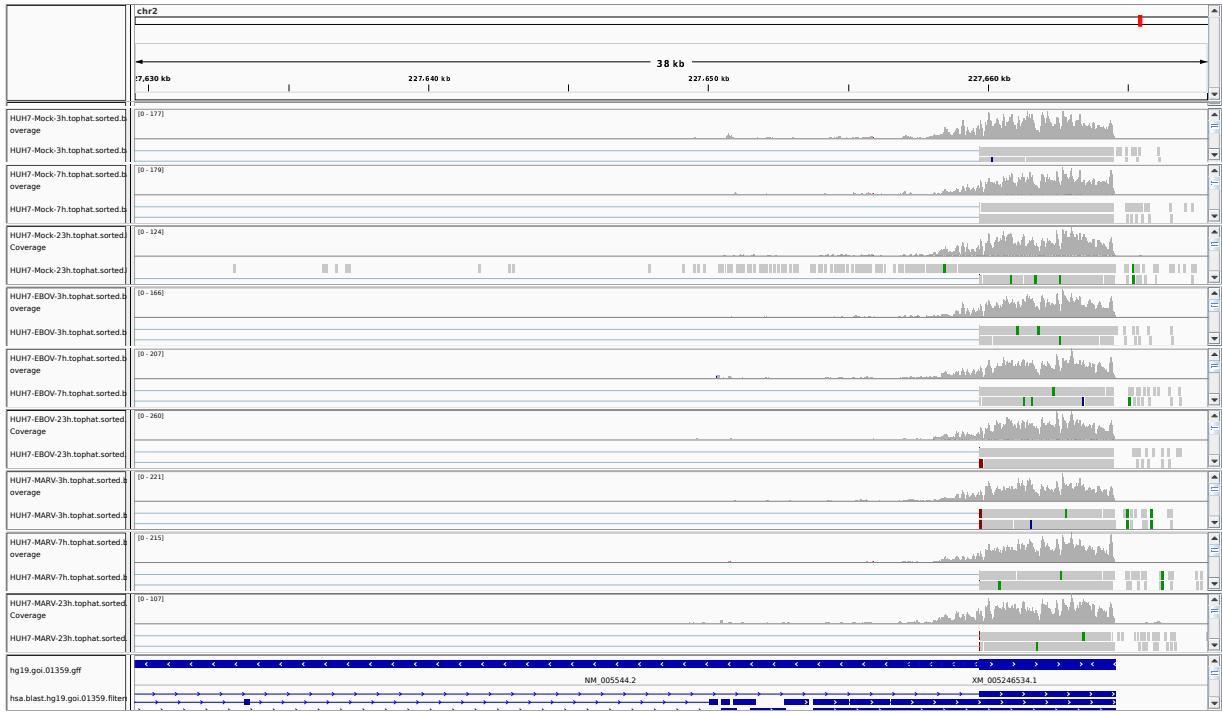


Figure 3: IGV Genome Browser screenshot of gene IRS1, zoom right side.

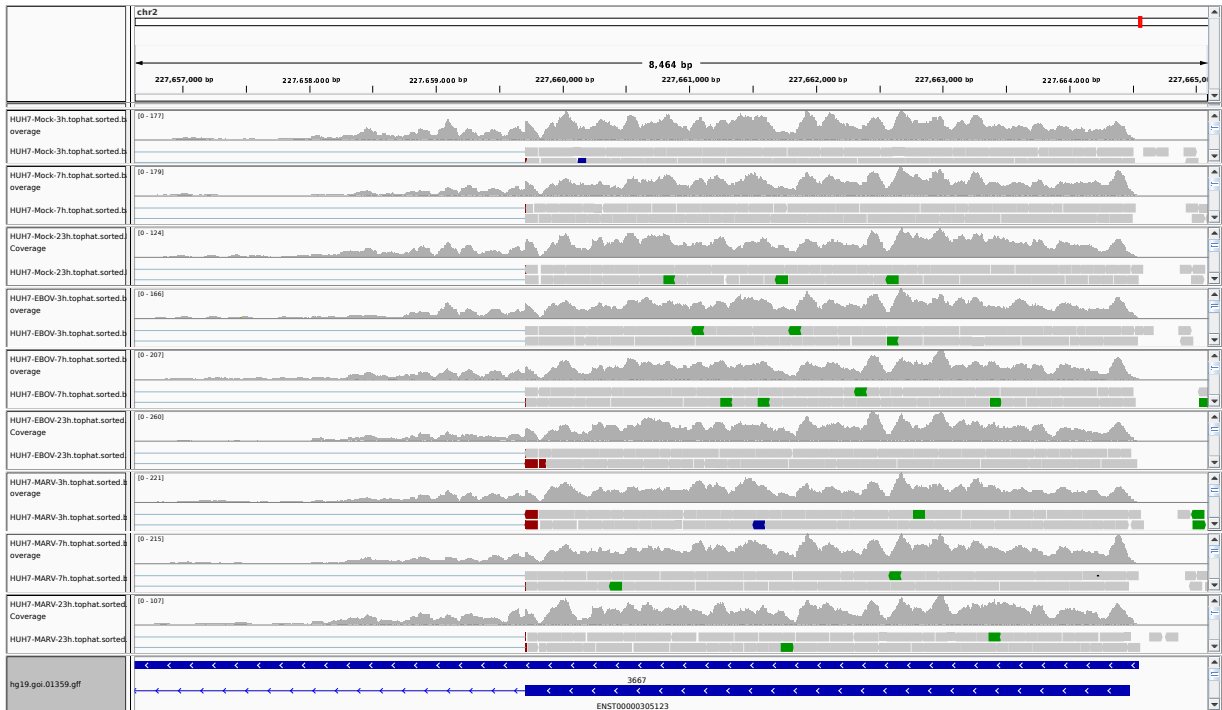


Figure 4: IGV Genome Browser screenshot of gene IRS1, zoom right side showing longer exon.

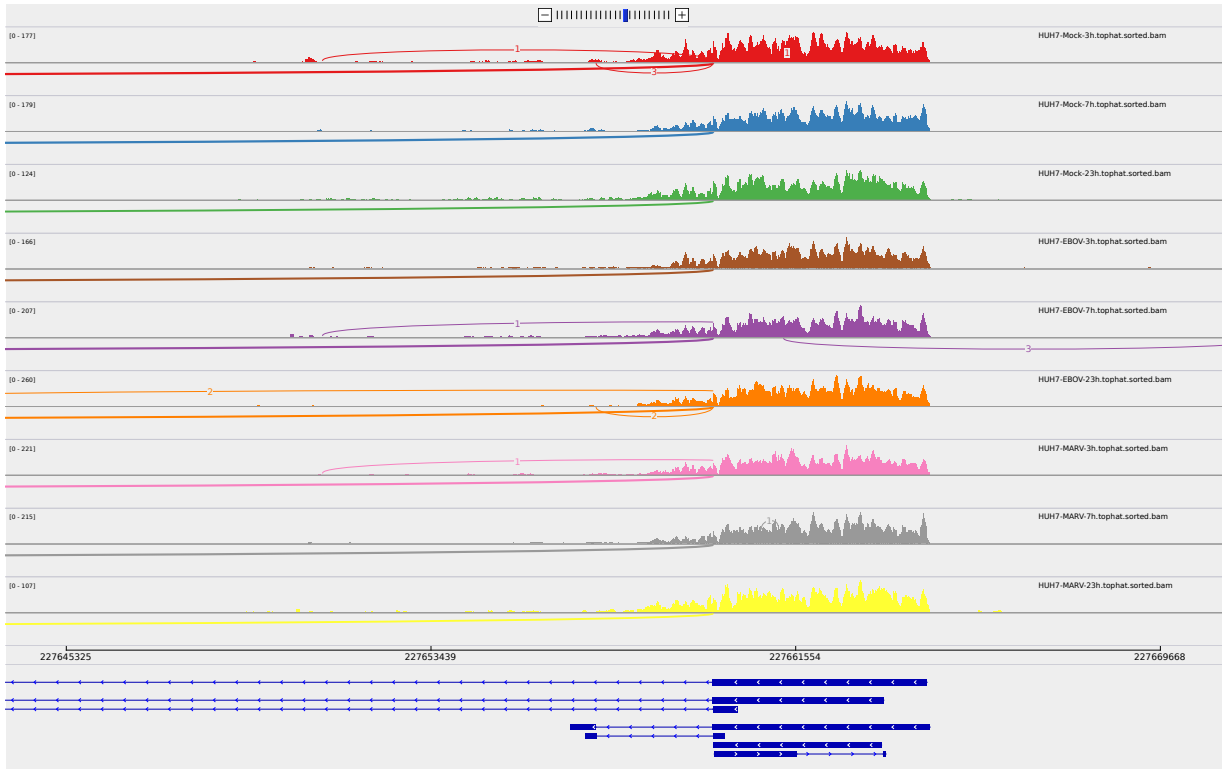


Figure 5: Sashimi plot of gene IRS1.

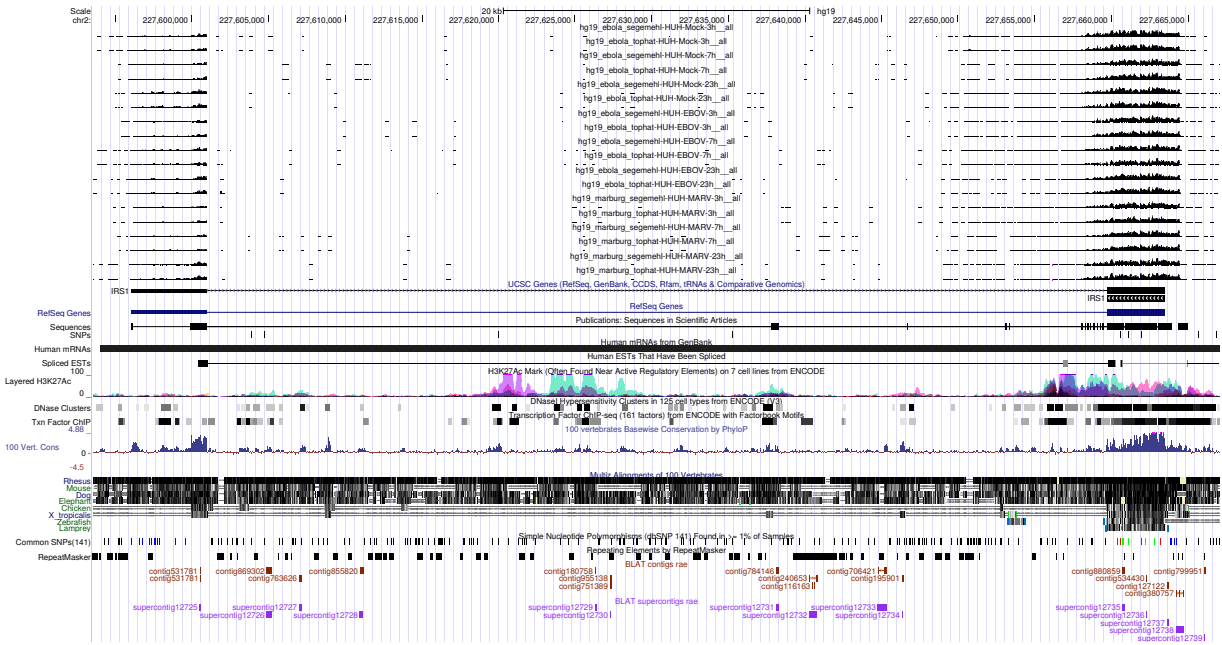


Figure 6: UCSC Genome Browser screenshot of gene IRS1.

Figure 7: