

1 SMAD5

SMAD family member 5 is involved in the TGF-beta signaling pathway and Signaling pathways regulating pluripotency of stem cells. It does not present any particular differential expression pattern in the analyzed samples

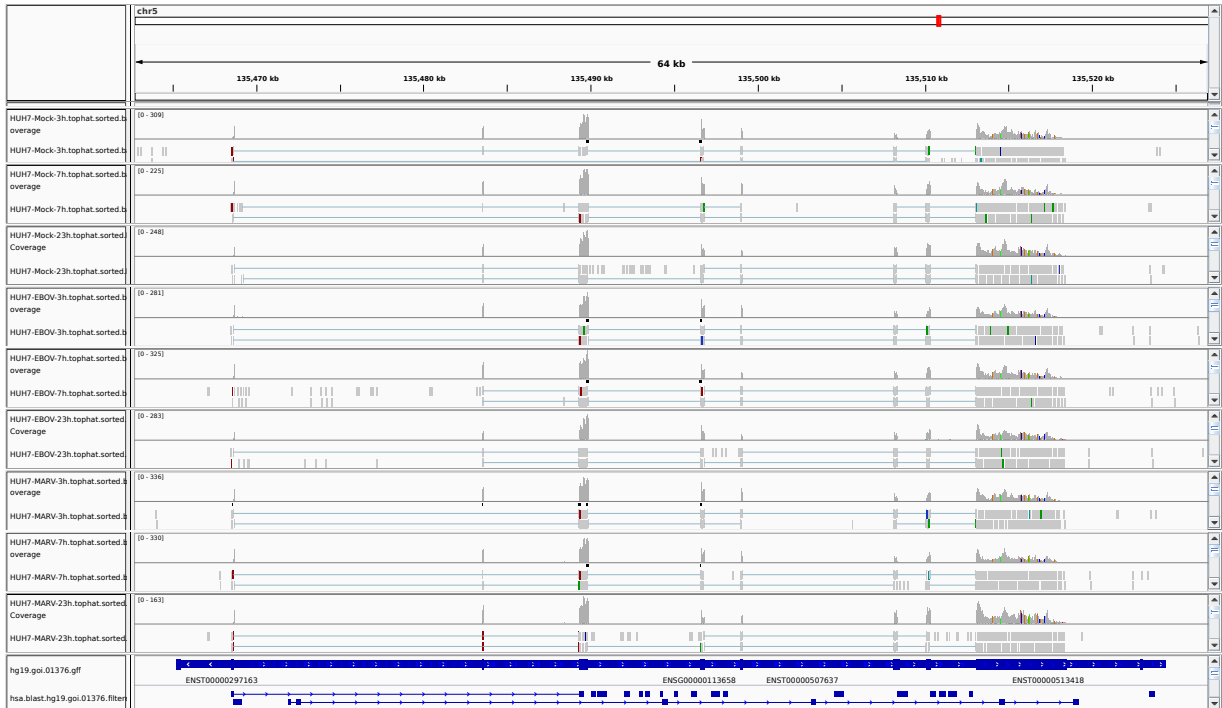


Figure 1: IGV Genome Browser screenshot of gene SMAD5.

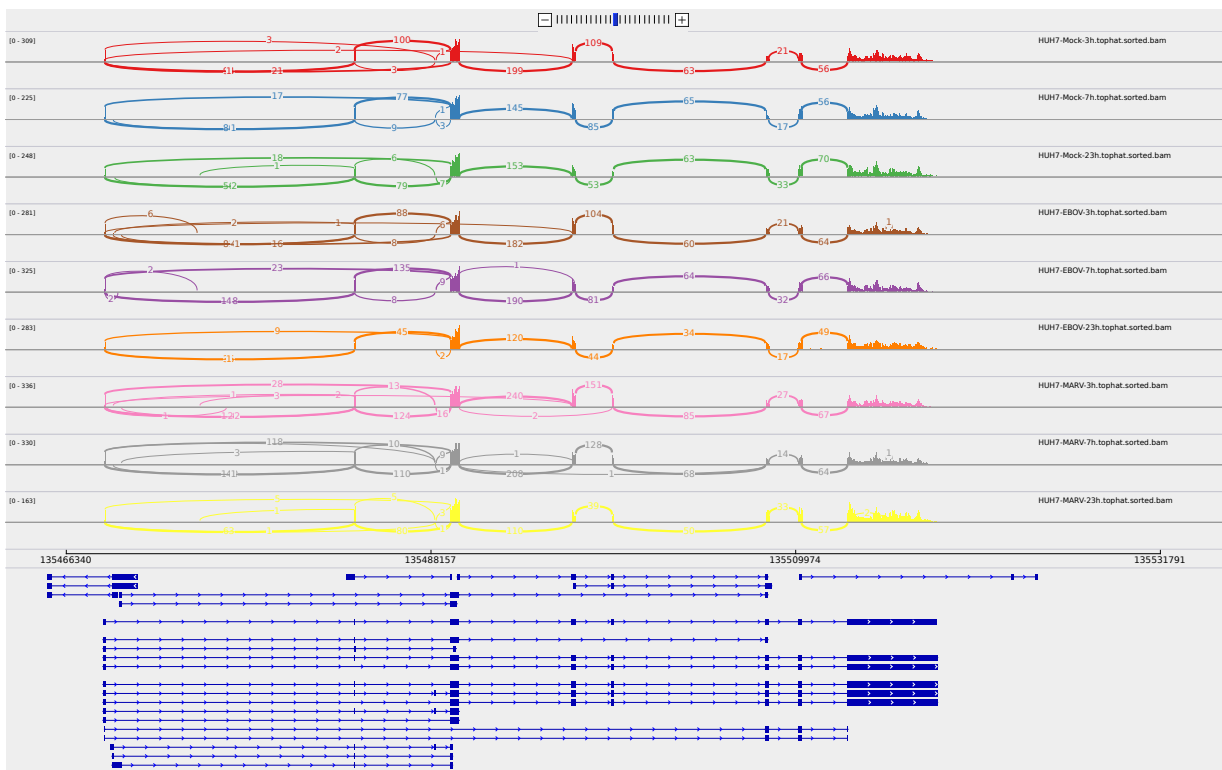


Figure 2: Sashimi plot of gene SMAD5.

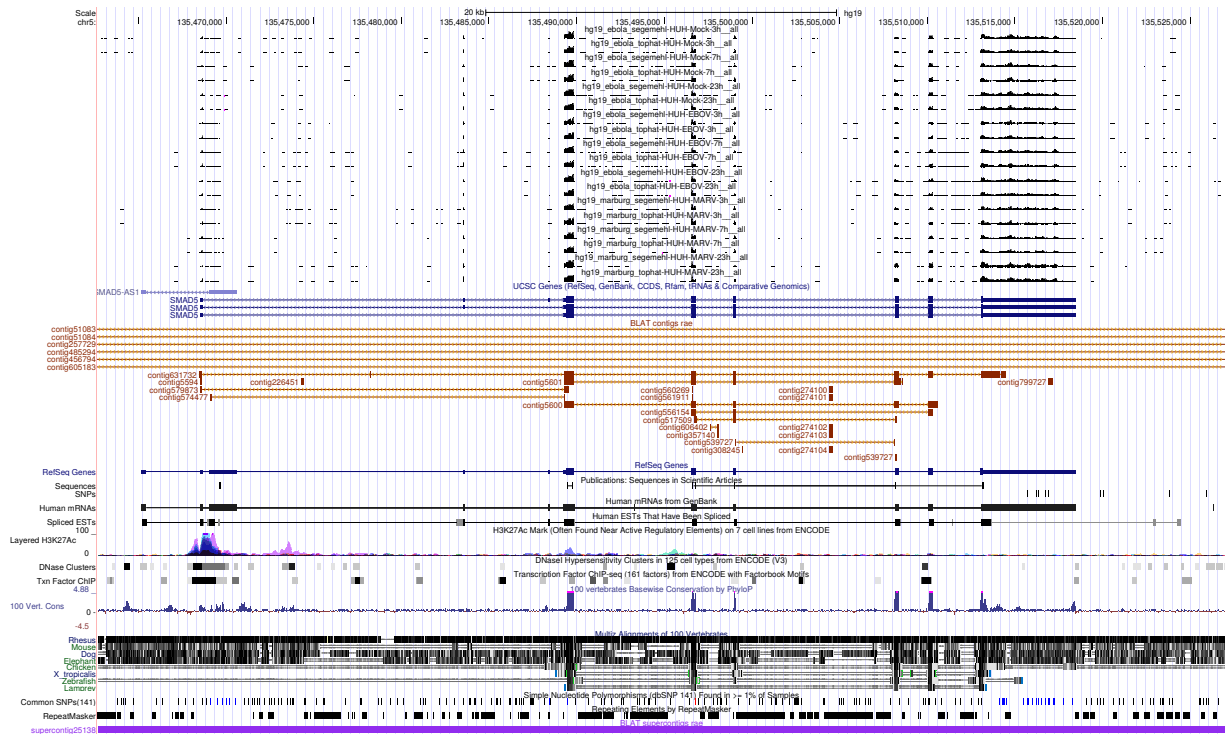


Figure 3: UCSC Genome Browser screenshot of gene SMAD5.