

1 HSP90AA1

The heat shock protein 90kDa alpha (cytosolic), class A member 1 is involved in Protein processing in endoplasmic reticulum, Antigen processing and presentation, PI3K-Akt and NOD-like receptor signaling pathways, Progesterone-mediated oocyte maturation, Estrogen signaling pathway, Pathways in cancer, Prostate cancer. It does not seem particularly differentially expressed in the analyzed samples.

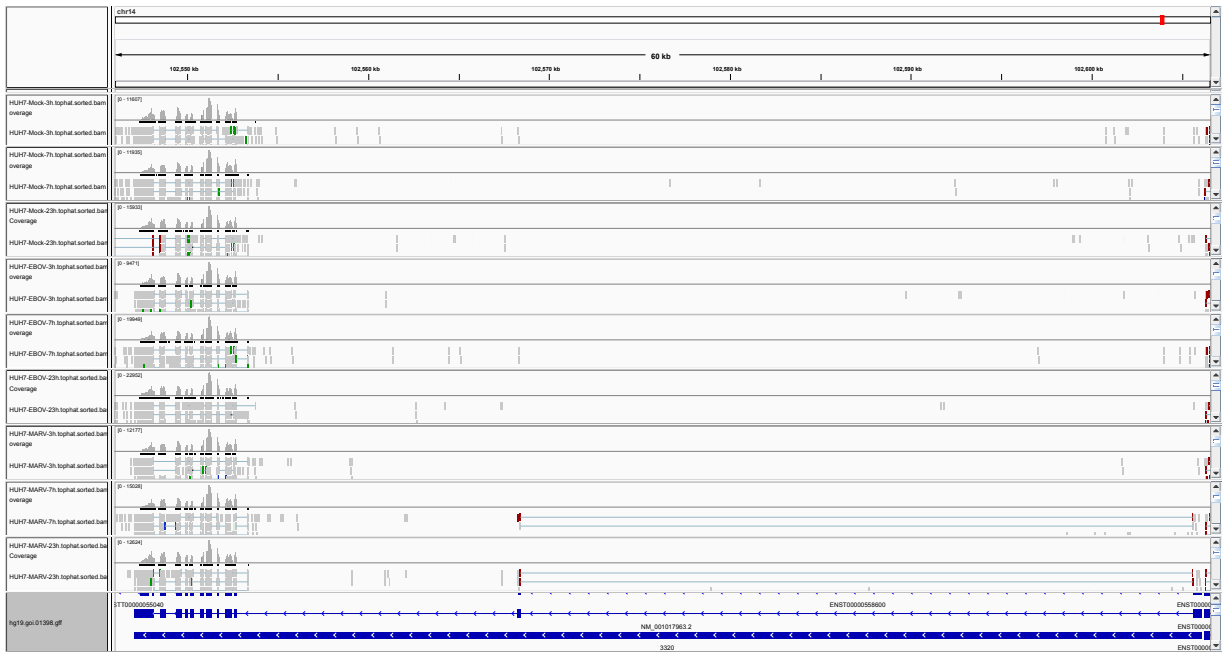


Figure 1: IGV Genome Browser screenshot of gene HSP90AA1.

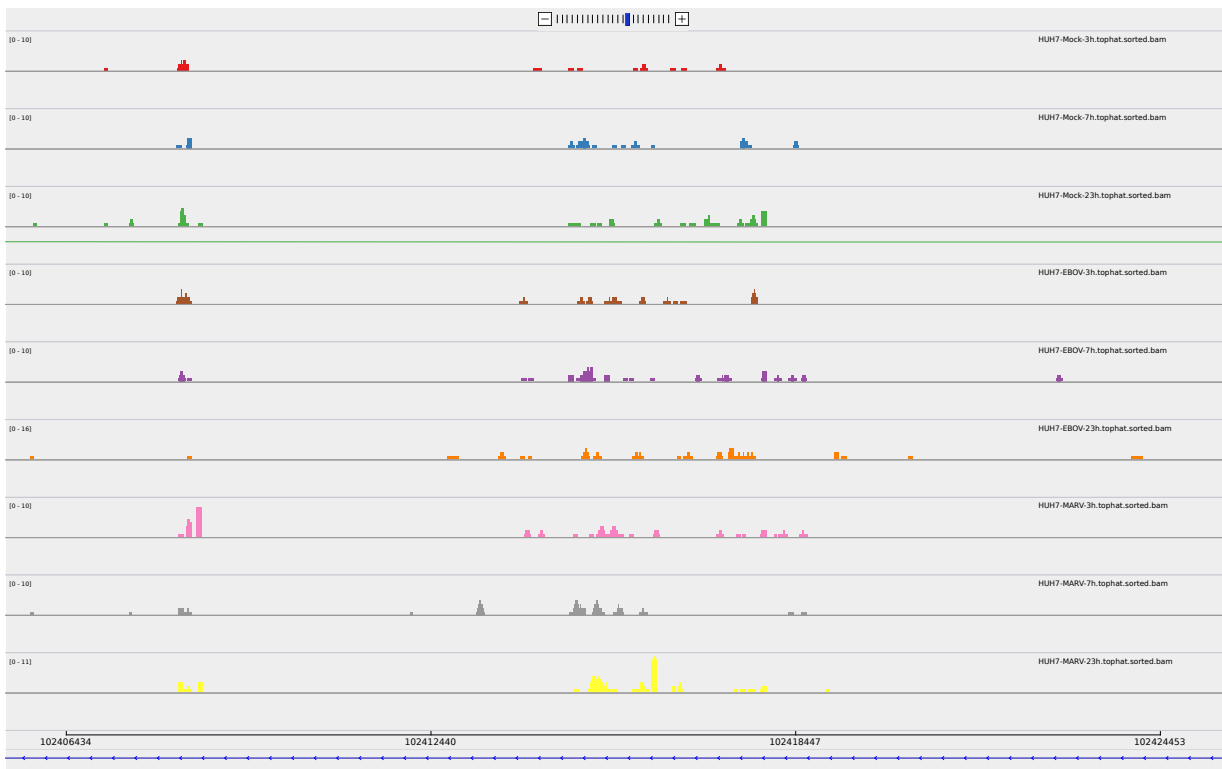


Figure 2: Sashimi plot of gene HSP90AA1.

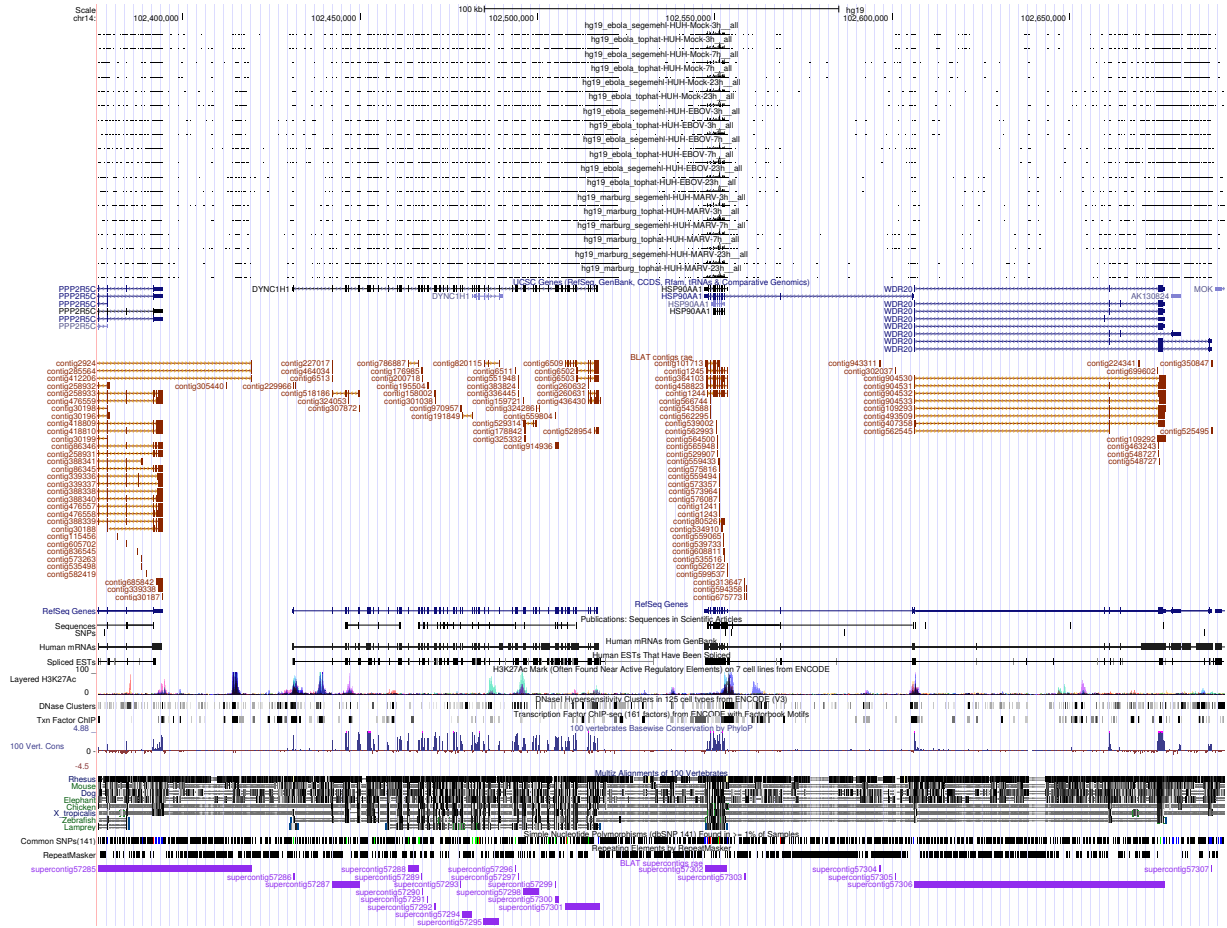


Figure 3: UCSC Genome Browser screenshot of gene HSP90AA1.

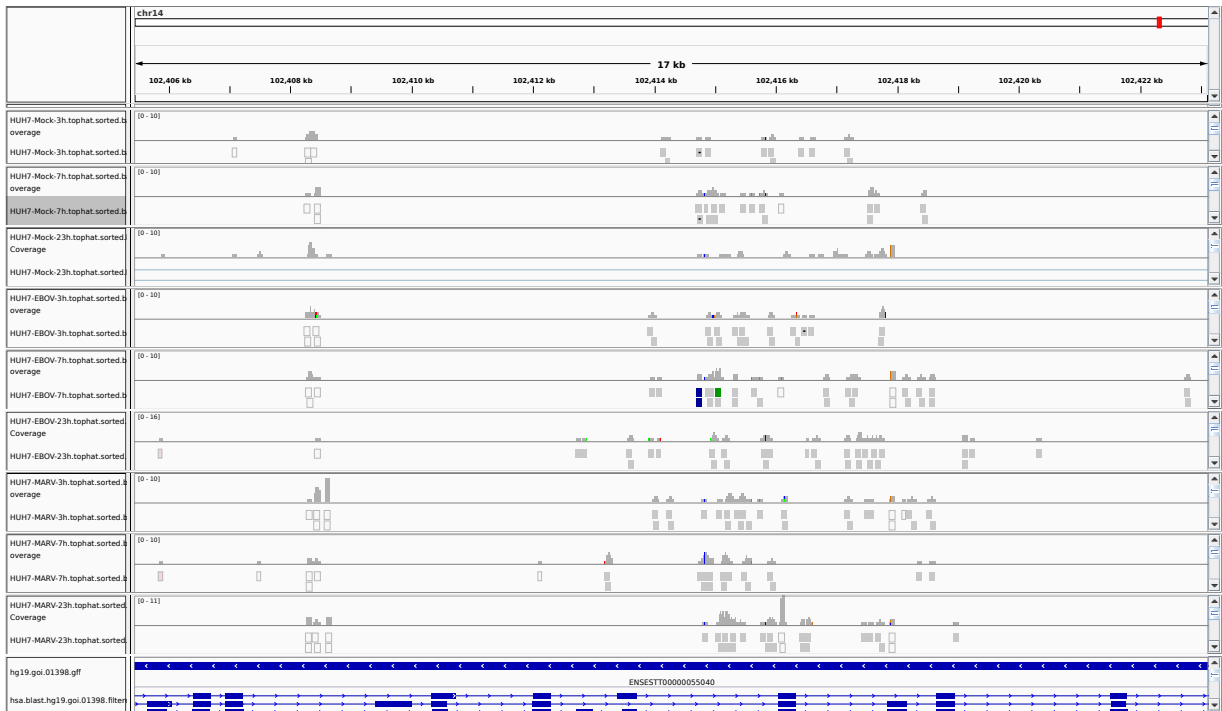


Figure 4: IGV Genome Browser screenshot of gene HSP90AA1, zoom.