

1 GAB1

The GRB2-associated binding protein 1 gene is involved in the ErbB, Neurotrophin and Ras signaling pathways, Bacterial invasion of epithelial cells, proteoglycans in cancer and Renal cell carcinoma. It seems to be slightly downregulated after 23 hours of Marburg virus infection in human, and slightly upregulated after 23 hours of Ebola infection in Bat.

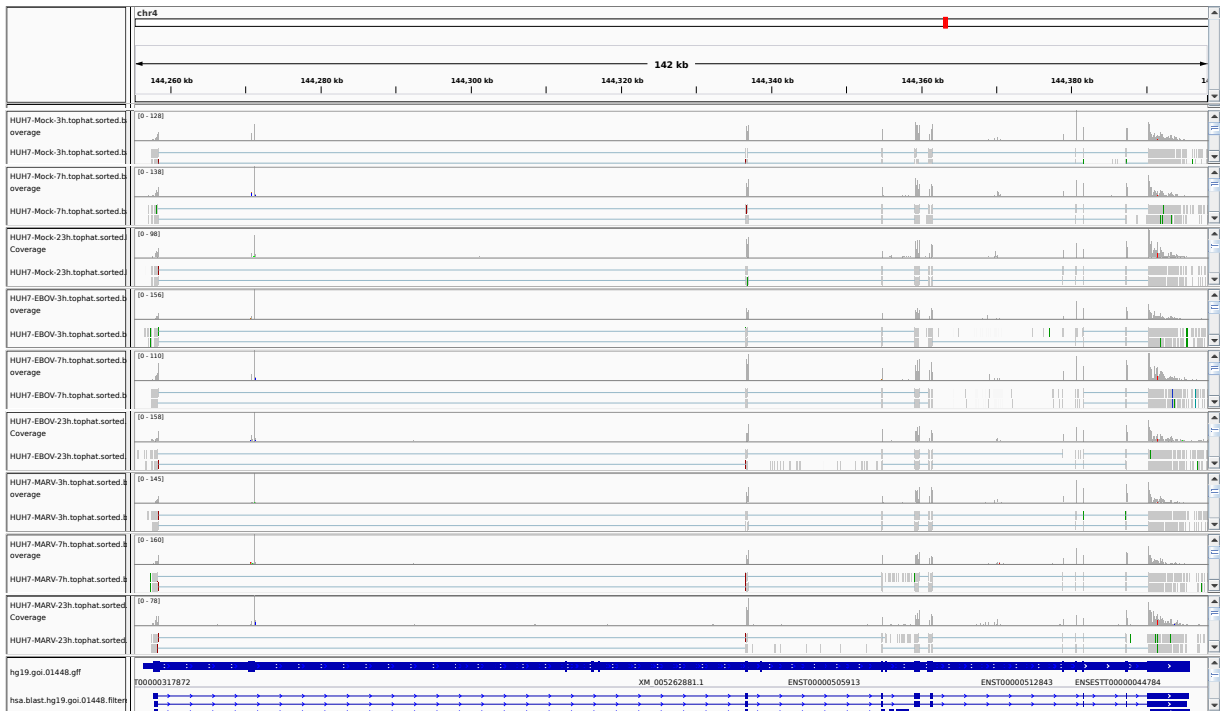


Figure 1: IGV Genome Browser screenshot of gene GAB1.

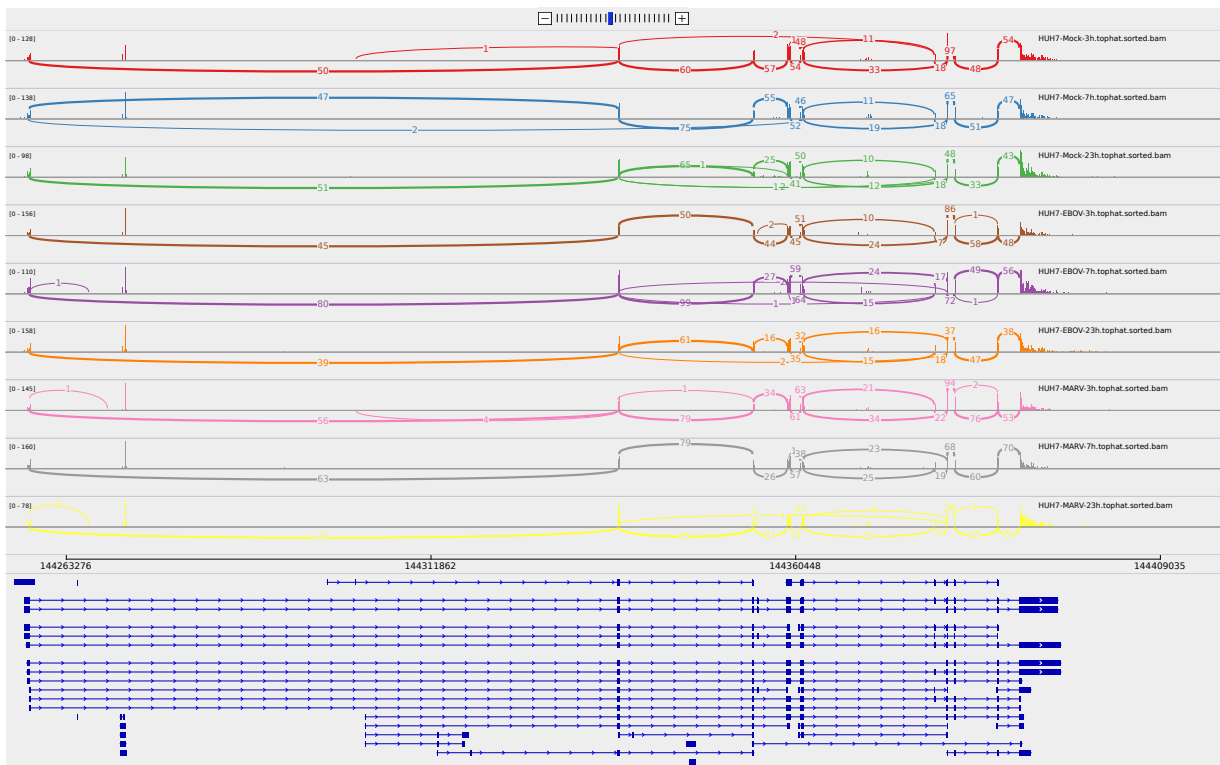


Figure 2: Sashimi plot of gene GAB1.

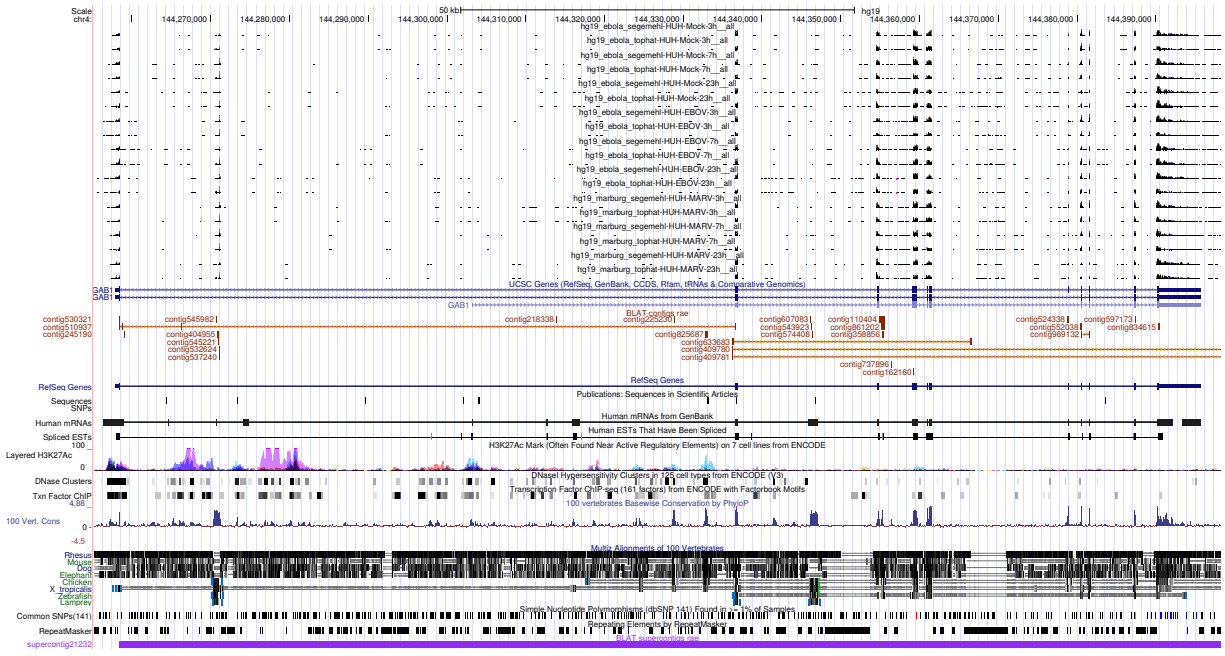


Figure 3: UCSC Genome Browser screenshot of gene GAB1.