

# 1 ITGA11

This gene encodes an alpha integrin. Integrins are heterodimeric integral membrane proteins composed of an alpha chain and a beta chain. This protein contains an I domain, is expressed in muscle tissue, dimerizes with beta 1 integrin in vitro, and appears to bind collagen in this form. Therefore, the protein may be involved in attaching muscle tissue to the extracellular matrix. Alternative transcriptional splice variants have been found for this gene, but their biological validity is not determined.

ITGA11 is not expressed in human samples but it seems to be induced in bat MARV infected cells. This pattern is not shown in EBOV infected bat cells.

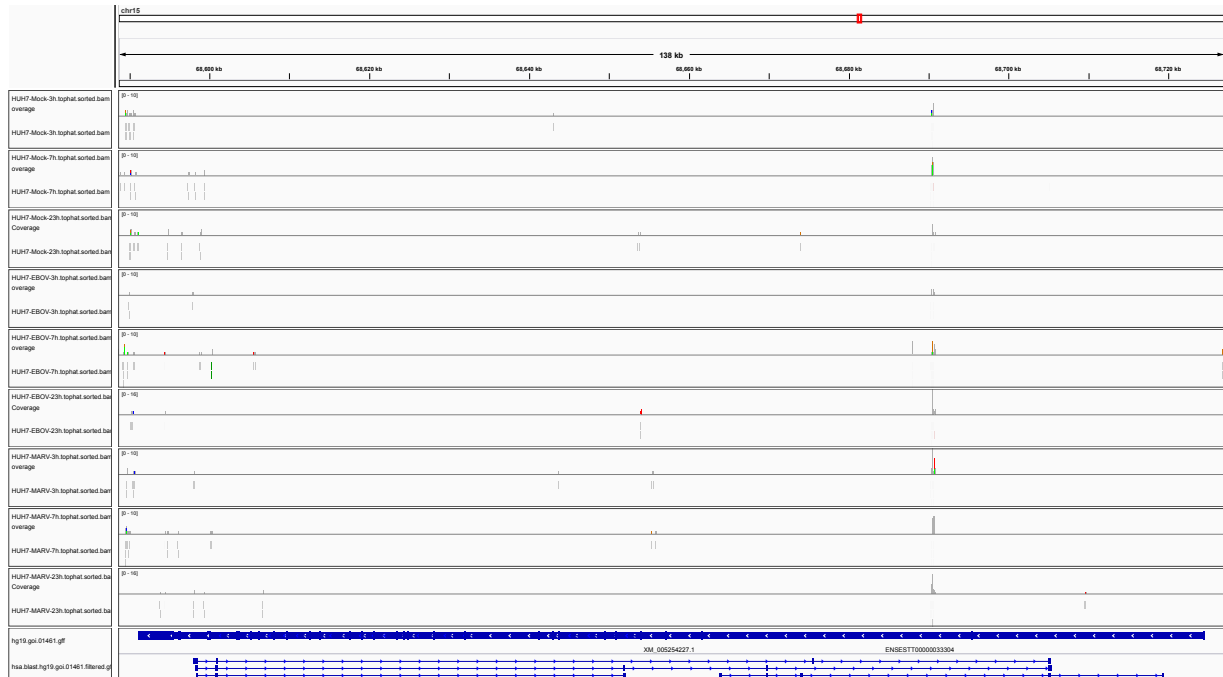


Figure 1: IGV Genome Browser screenshot of gene ITGA11.

Figure 2: Sashimi plot of gene ITGA11.

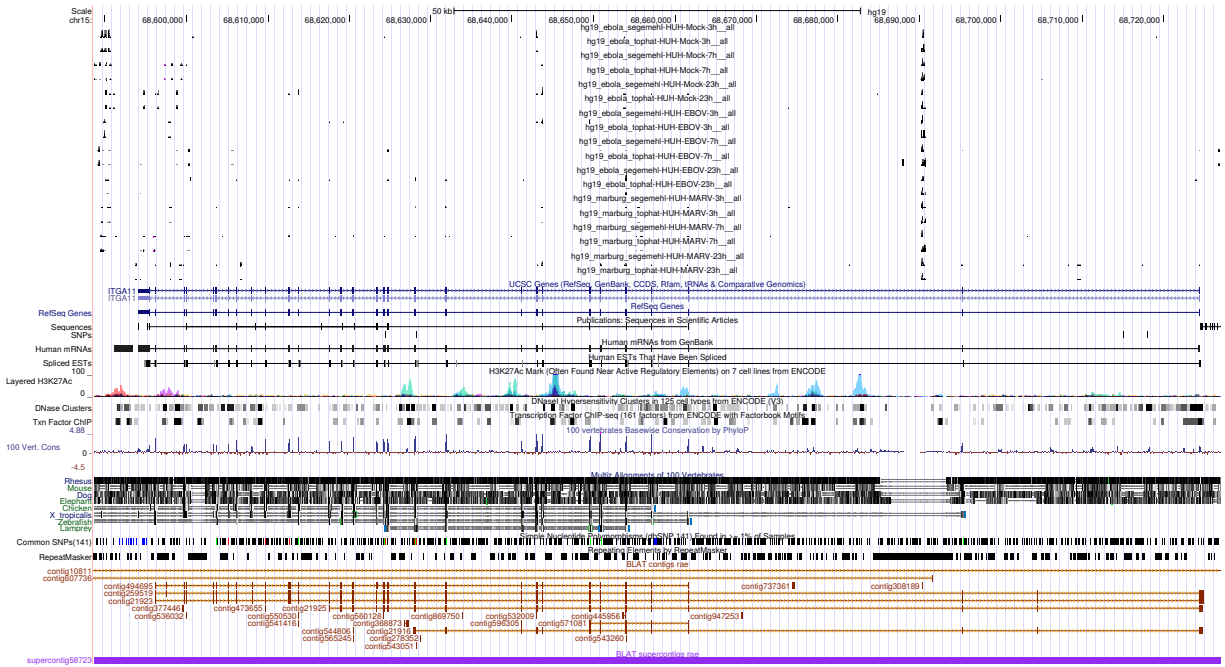


Figure 3: UCSC Genome Browser screenshot of gene ITGA11.

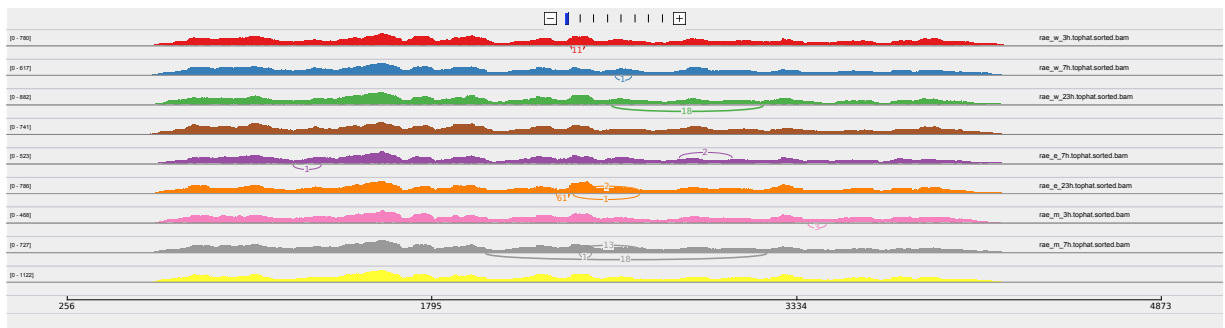


Figure 4: