

1 ITGA10

Integrins are integral membrane proteins composed of an alpha chain and a beta chain, and are known to participate in cell adhesion as well as cell-surface mediated signalling. The I-domain containing alpha 10 combines with the integrin beta 1 chain (ITGB1) to form a novel collagen type II-binding integrin expressed in cartilage tissue.

ITGA10 is not expressed in humans nor in bats in examined conditions.

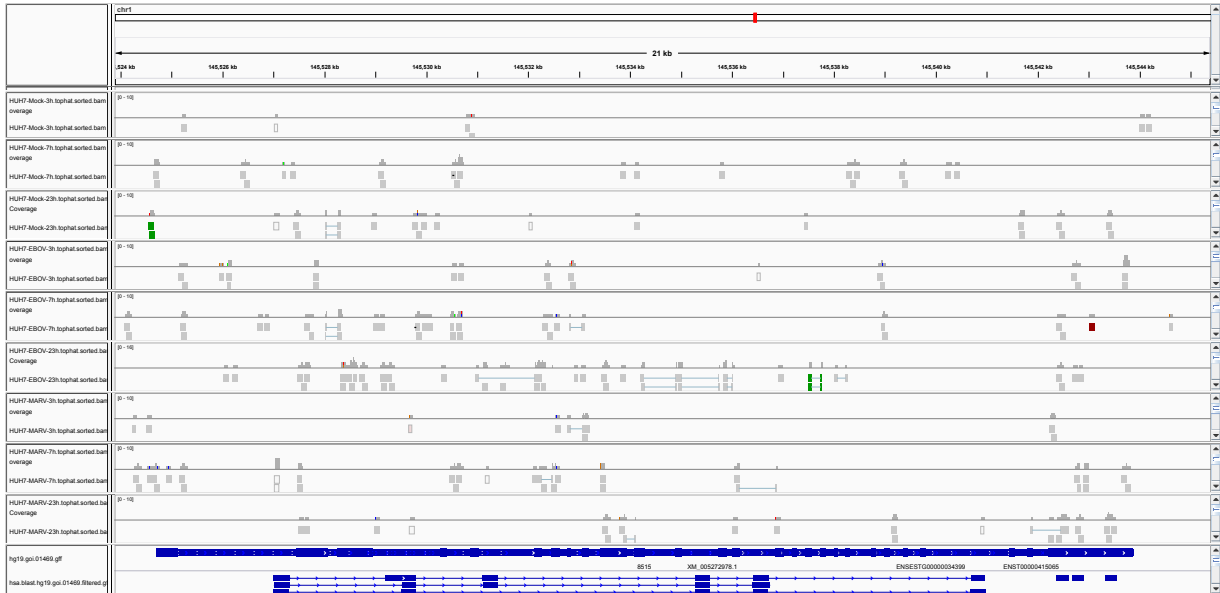


Figure 1: IGV Genome Browser screenshot of gene ITGA10.

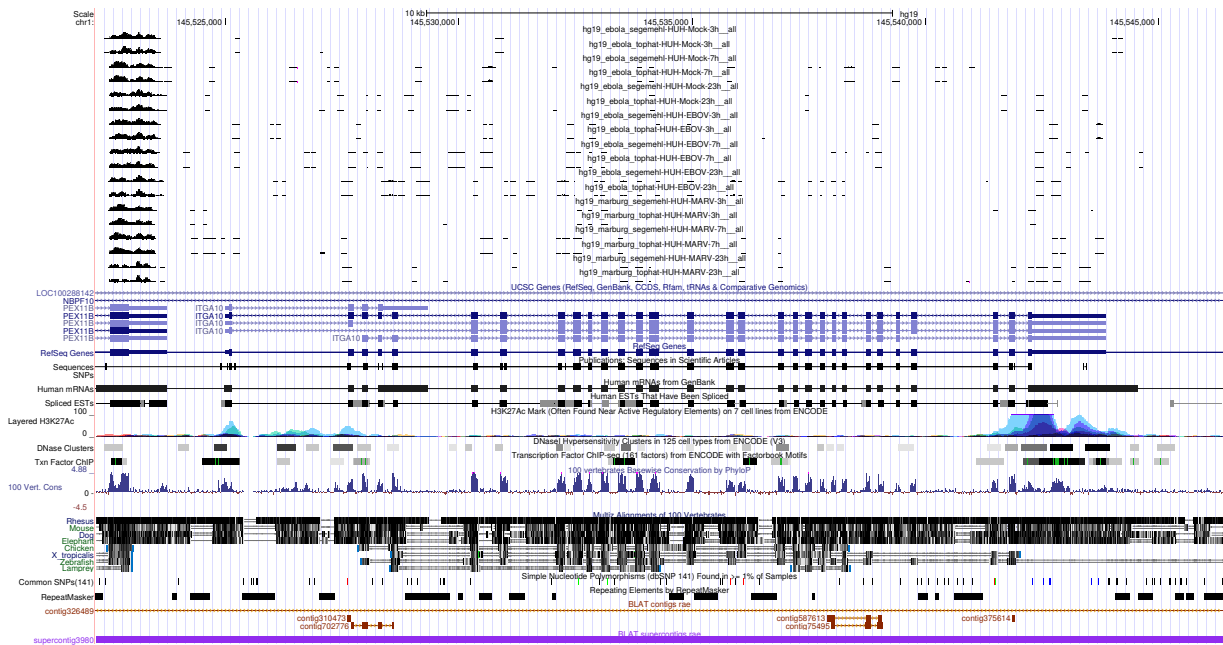


Figure 2: UCSC Genome Browser screenshot of gene ITGA10.