

1 CUL1

The cullin 1 gene is involved in the Cell cycle, Oocyte meiosis, Ubiquitin mediated proteolysis, Protein processing in endoplasmic reticulum, Wnt and TGF-beta signaling pathways, Circadian rhythm and Herpes simplex infection. It did not present a particularly interesting differential expression pattern in the samples analyzed.

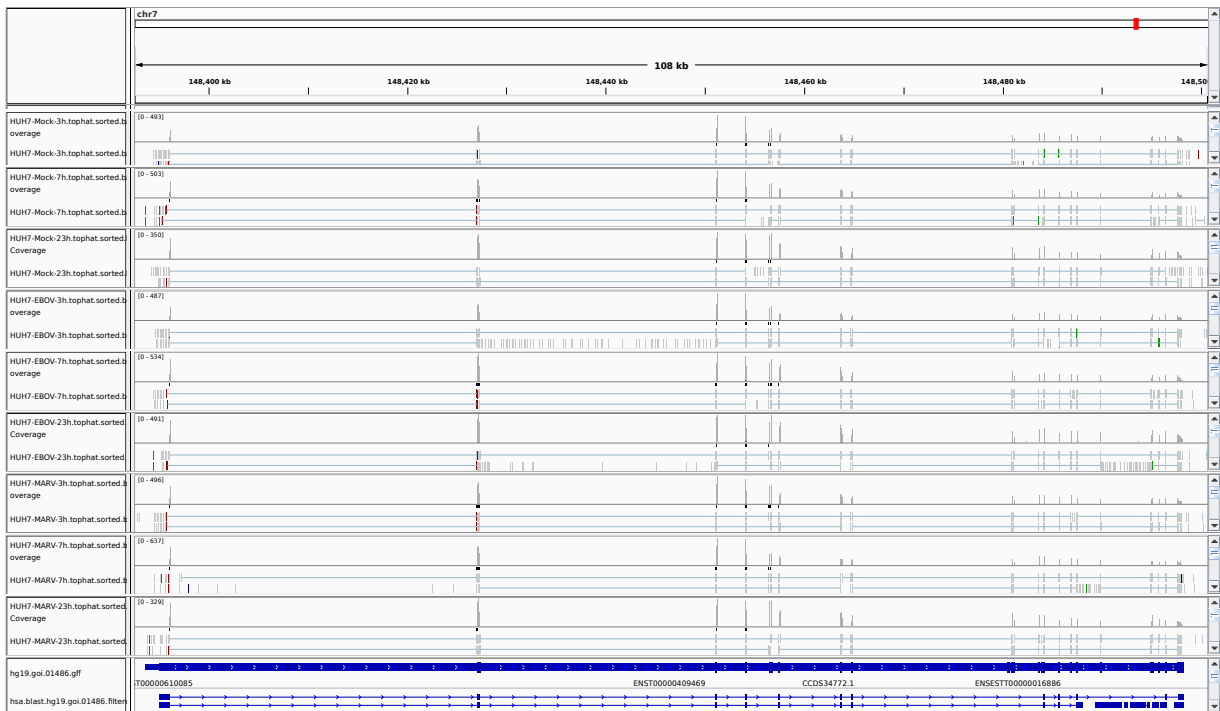


Figure 1: IGV Genome Browser screenshot of gene CUL1.

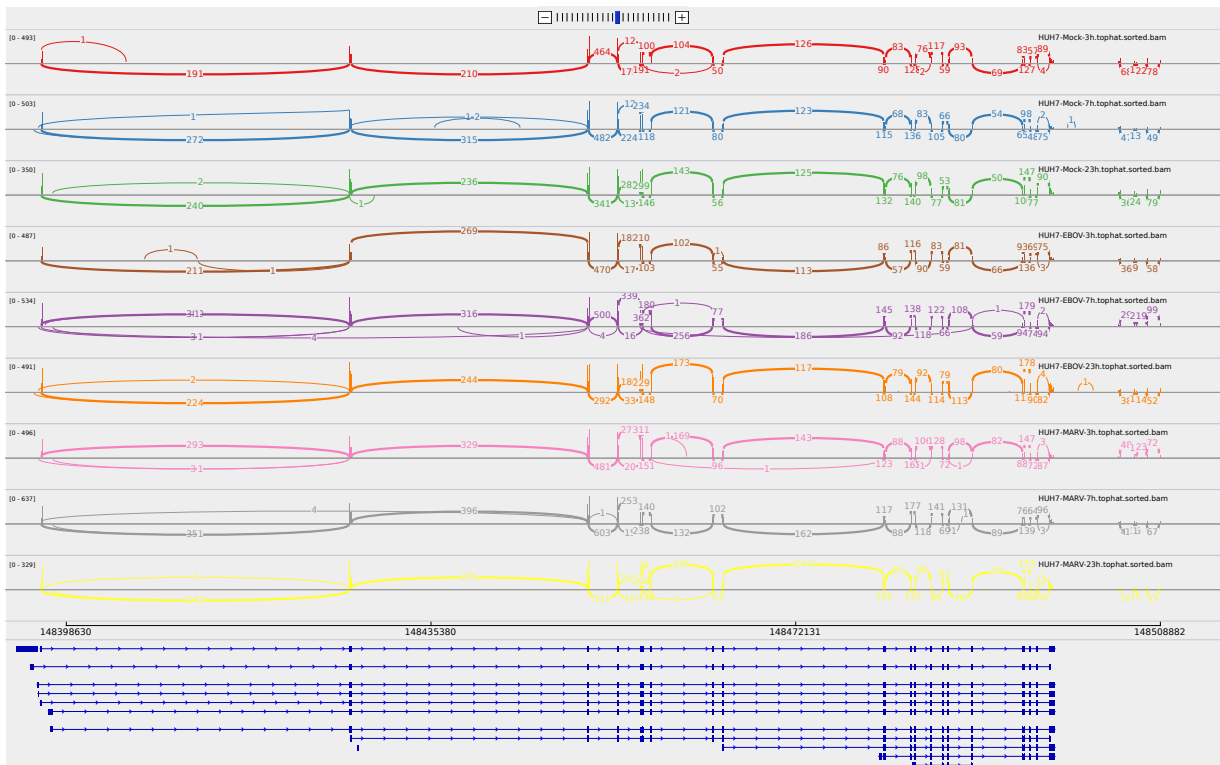


Figure 2: Sashimi plot of gene CUL1.

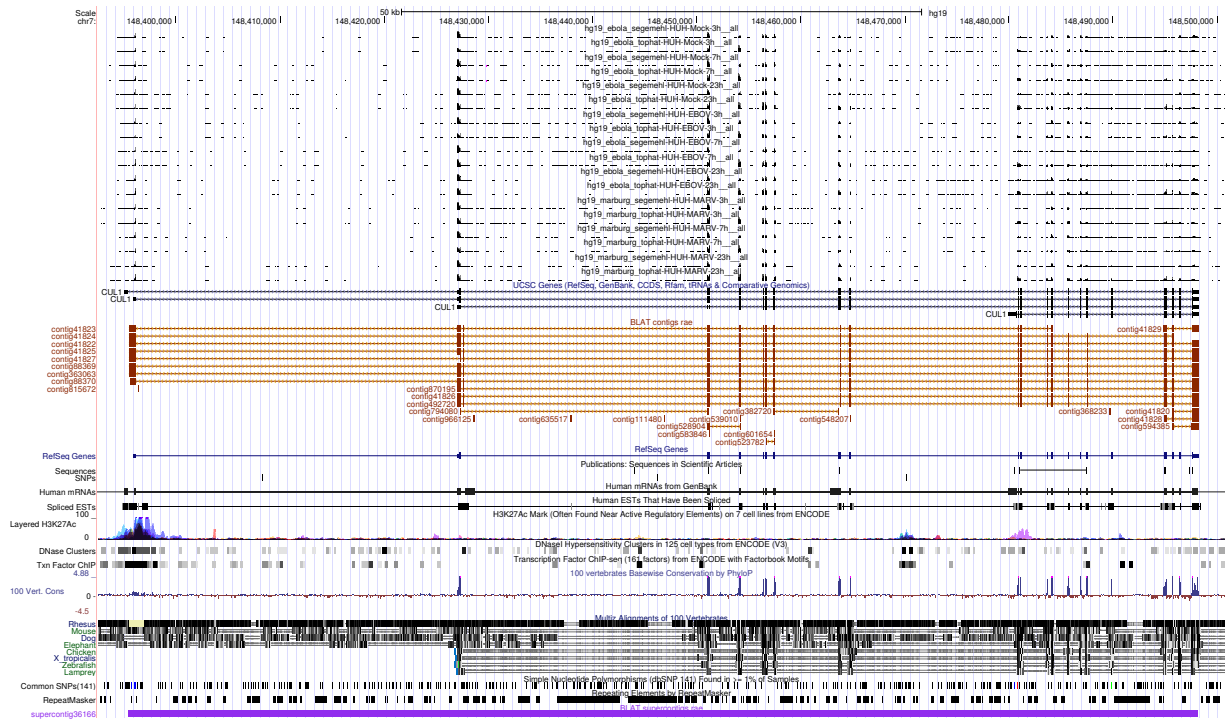


Figure 3: UCSC Genome Browser screenshot of gene CUL1.