

1 MCL1.gff

This gene encodes an anti-apoptotic protein, which is a member of the Bcl-2 family. Alternative splicing results in multiple transcript variants. The longest gene product (isoform 1) enhances cell survival by inhibiting apoptosis while the alternatively spliced shorter gene products (isoform 2 and isoform 3) promote apoptosis and are death-inducing.

This gene was found to be with high expression in human and moderate expression in bats, however, without significantly differential expression level.

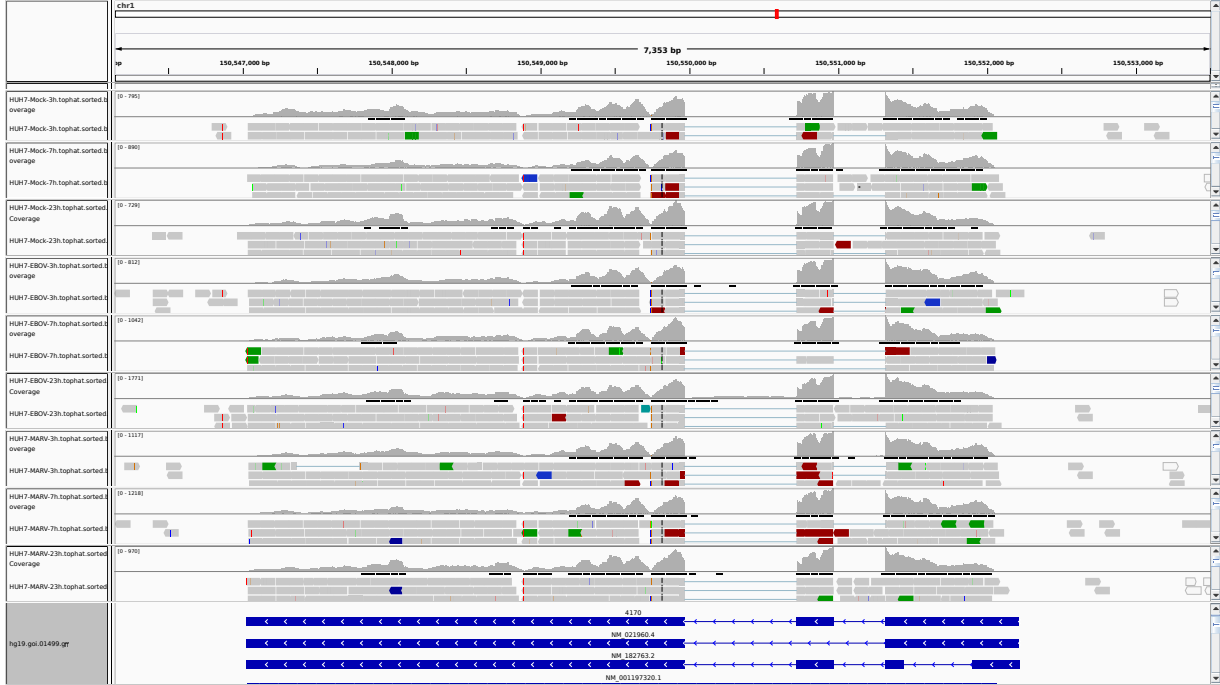


Figure 1: IGV Genome Browser screenshot of gene MCL1.gff.

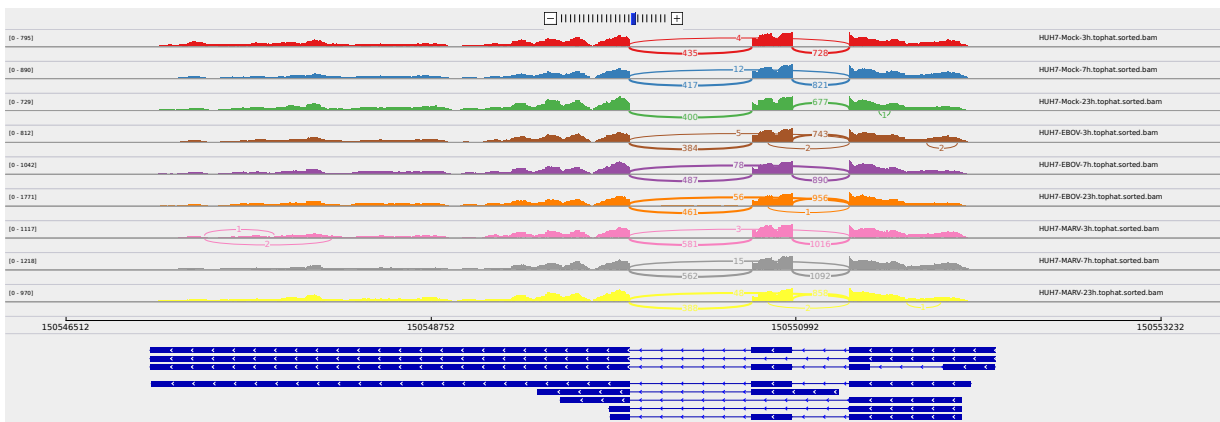


Figure 2: Sashimi plot of gene MCL1.gff.

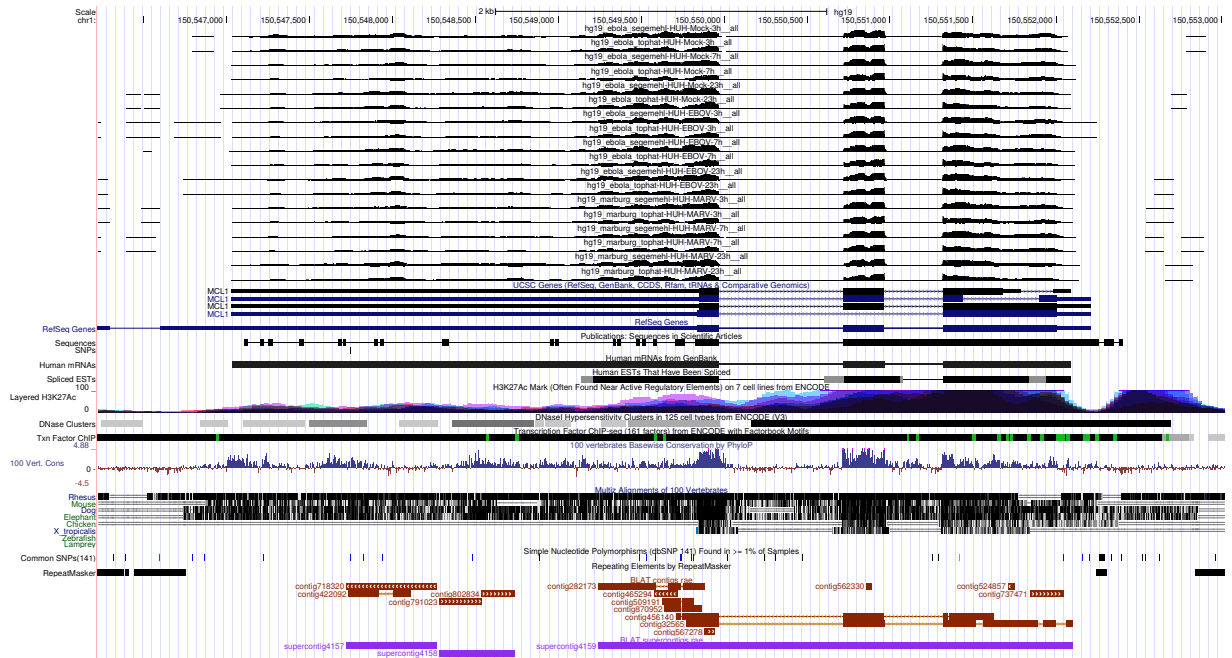


Figure 3: UCSC Genome Browser screenshot of gene MCL1.gff.