

1 BAK1.gff

The protein encoded by this gene belongs to the BCL2 protein family. BCL2 family members form oligomers or heterodimers and act as anti- or pro-apoptotic regulators that are involved in a wide variety of cellular activities. This protein localizes to mitochondria, and functions to induce apoptosis. It interacts with and accelerates the opening of the mitochondrial voltage-dependent anion channel, which leads to a loss in membrane potential and the release of cytochrome *c*. This protein also interacts with the tumor suppressor P53 after exposure to cell stress.

This gene was found to be with low expression level in human probes, no homolog was found in bat probes.



Figure 1: IGV Genome Browser screenshot of gene BAK1.gff.

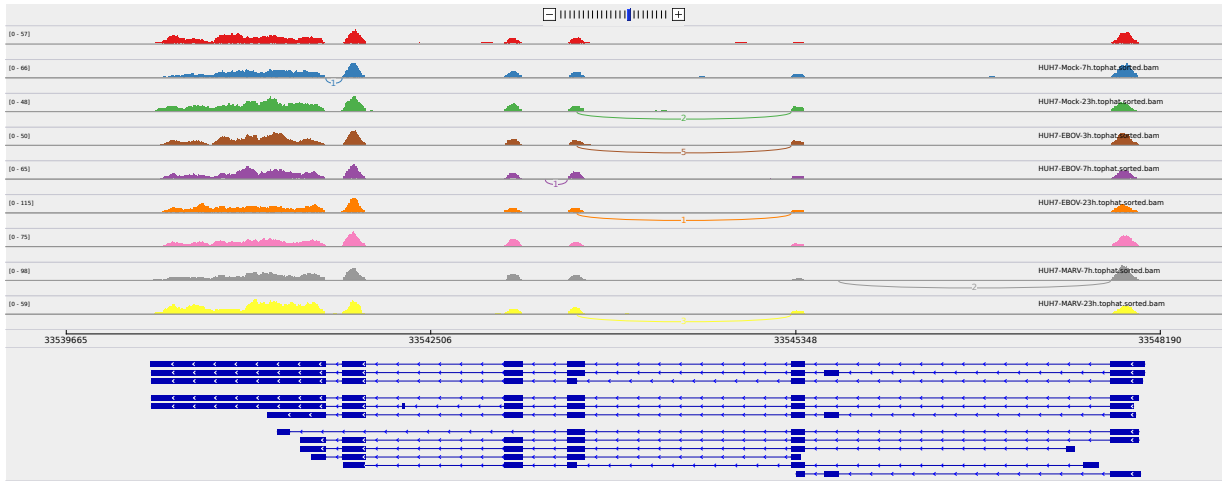


Figure 2: Sashimi plot of gene BAK1.gff.

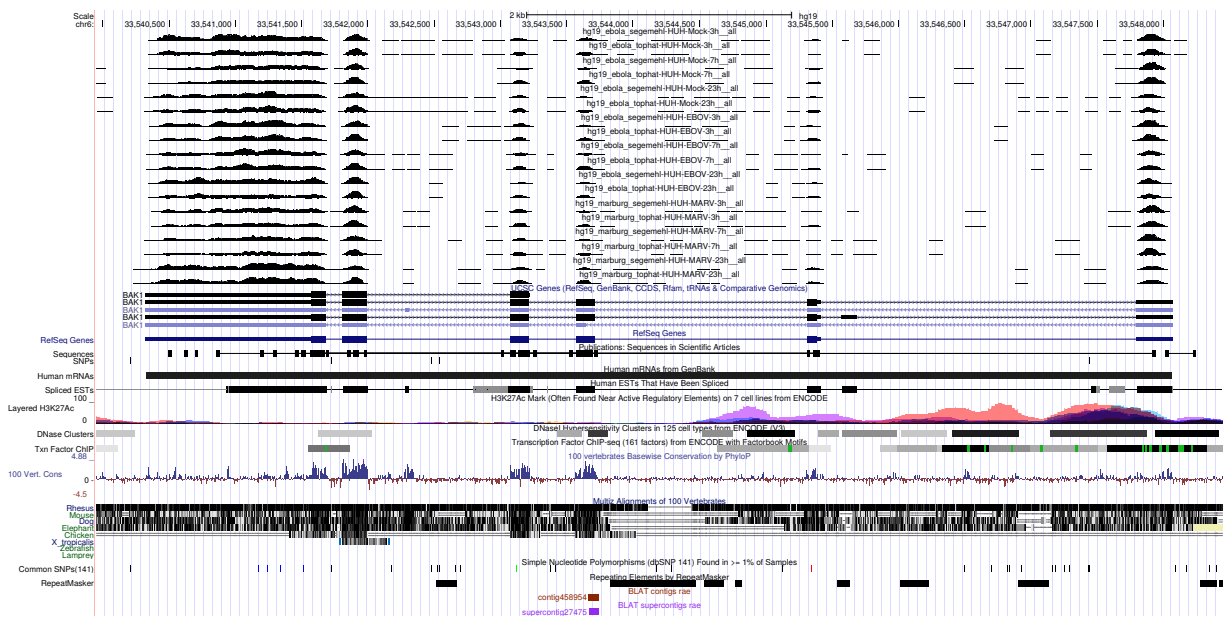


Figure 3: UCSC Genome Browser screenshot of gene BAK1.gff.