

1 ANAPC10

ANAPC10 is a core subunit of the anaphase-promoting complex (APC), or cyclosome, a ubiquitin protein ligase that is essential for progression through the cell cycle. APC initiates sister chromatid separation by ubiquitinating the anaphase inhibitor securin (PTTG1; MIM 604147) and triggers exit from mitosis by ubiquitinating cyclin B (CCNB1; MIM 123836), the activating subunit of cyclin-dependent kinase-1 (CDK1; MIM 116940). The gene shows a slight down regulation in both, EBOV and MARV infected human cell samples 23h p.i..

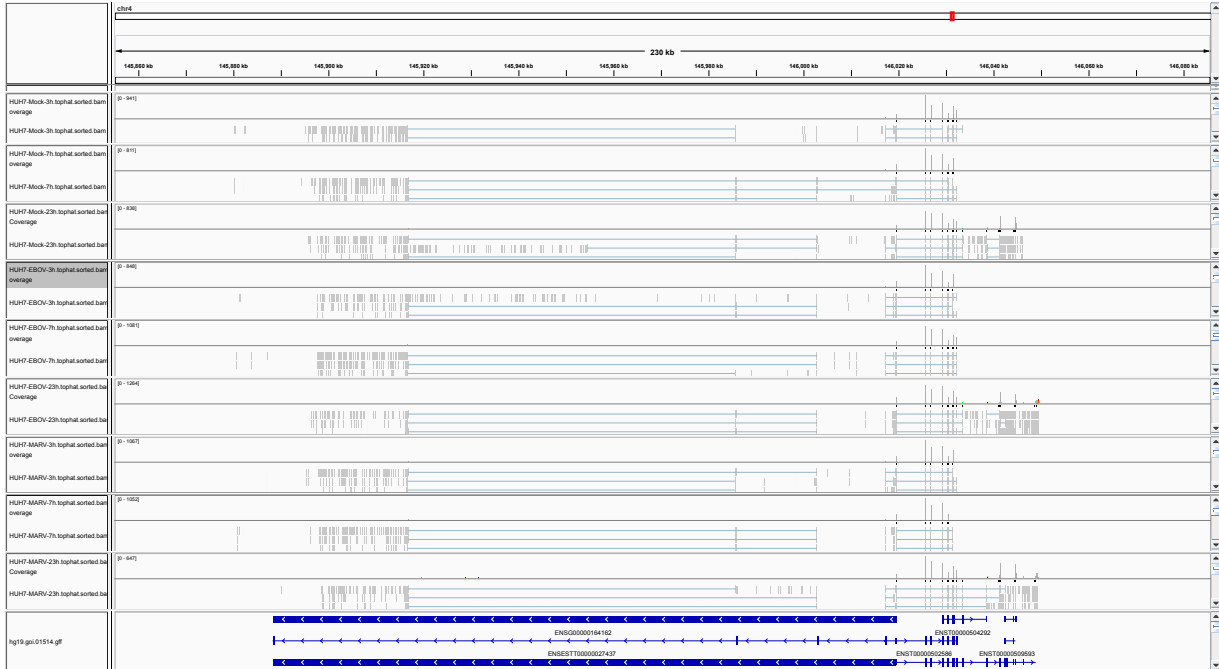


Figure 1: IGV Genome Browser screenshot of gene ANAPC10.

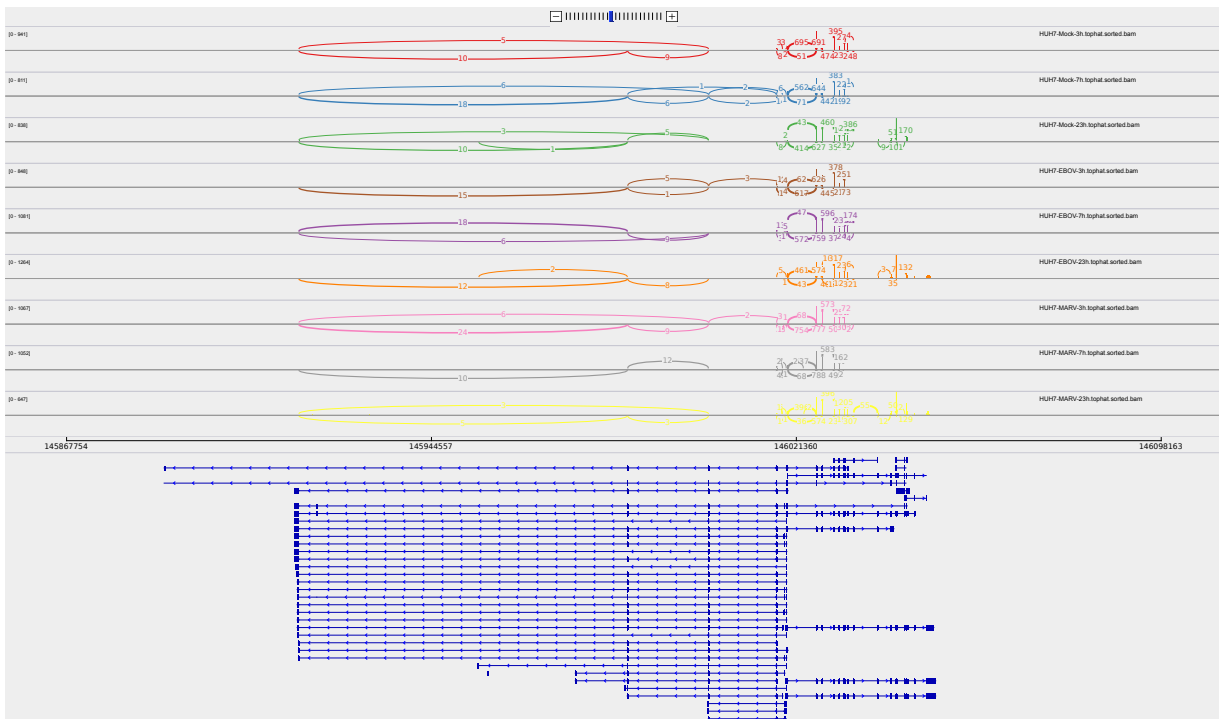


Figure 2: Sashimi plot of gene ANAPC10.

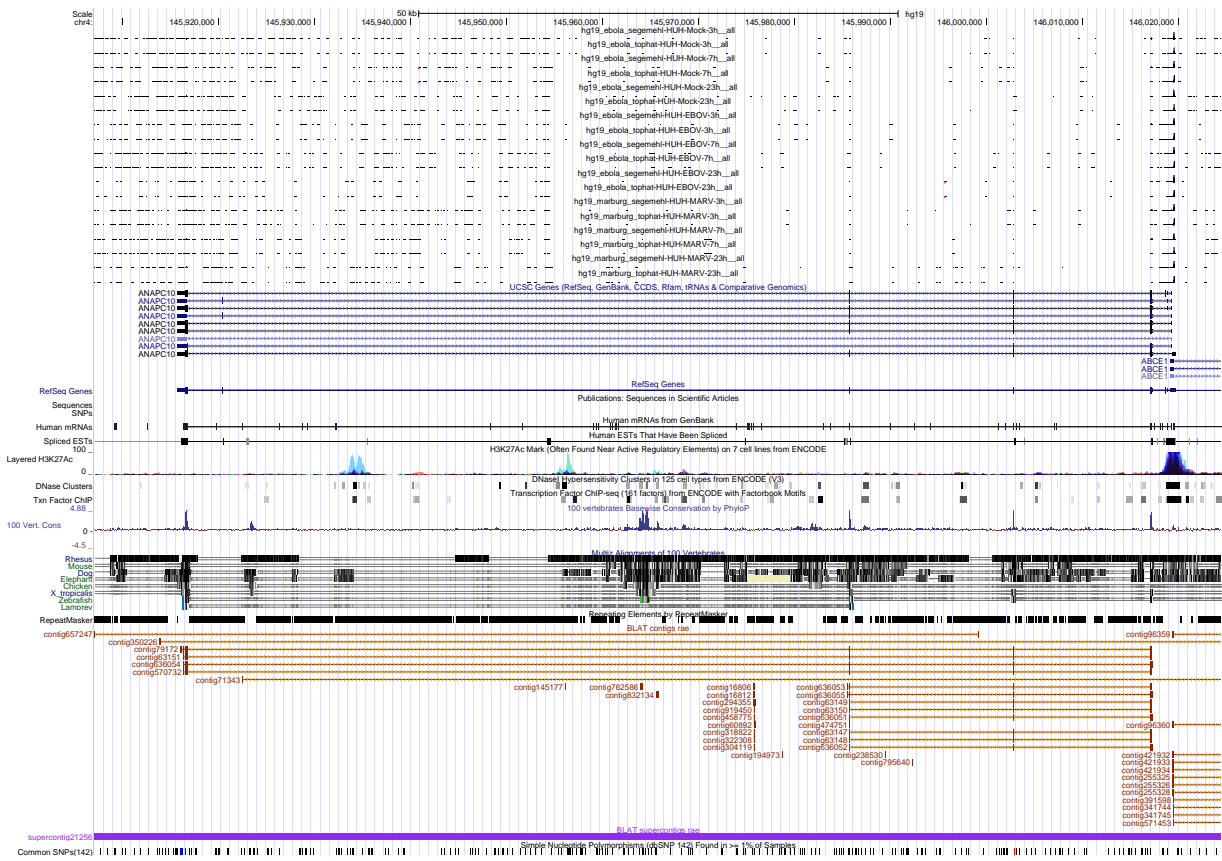


Figure 3: UCSC Genome Browser screenshot of gene ANAPC10.