

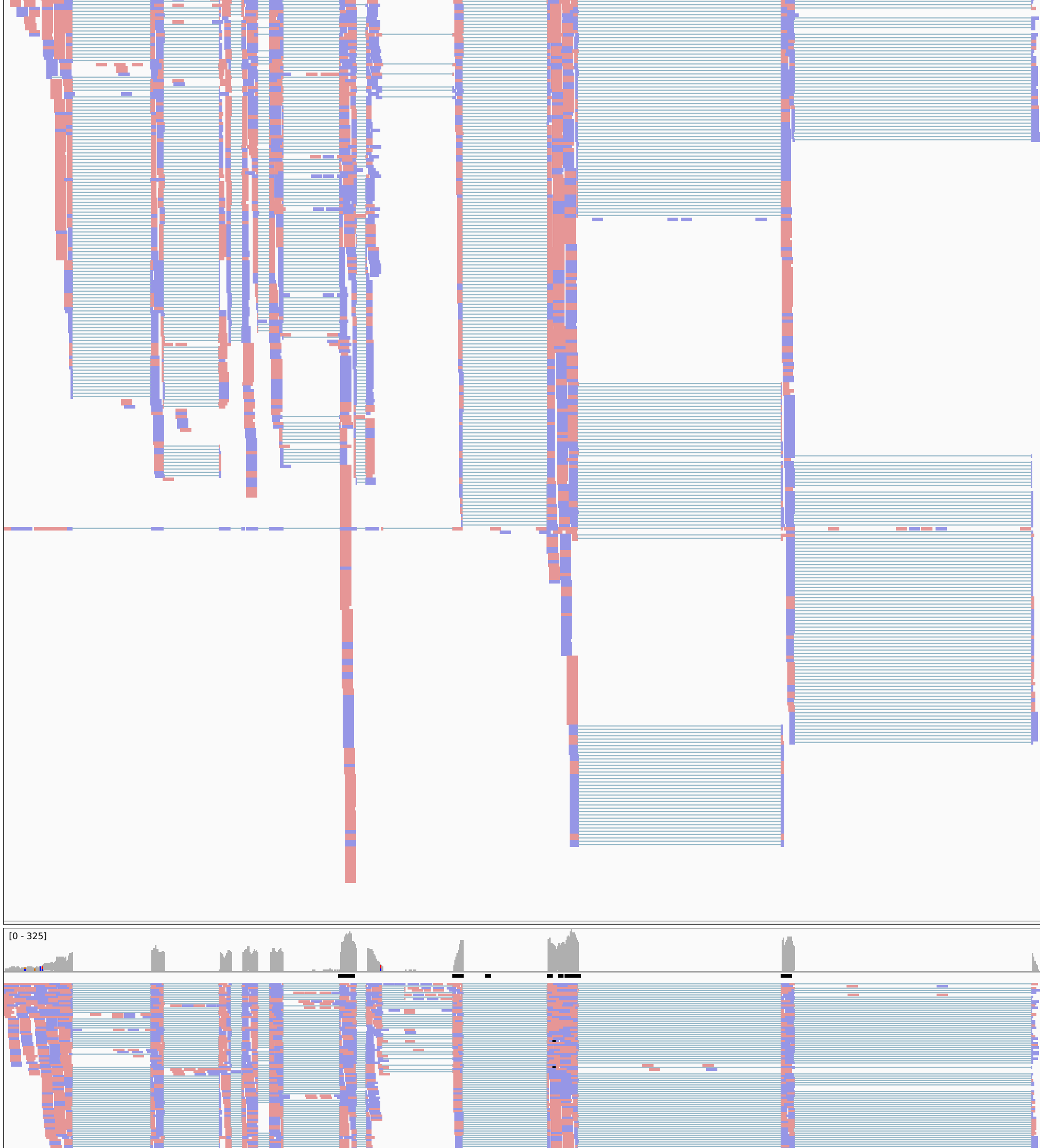
NW_015493443.1

9,066 bp
21,000 bp 22,000 bp 23,000 bp 24,000 bp 25,000 bp 26,000 bp 27,000 bp 28,000 bp 29,000 bp

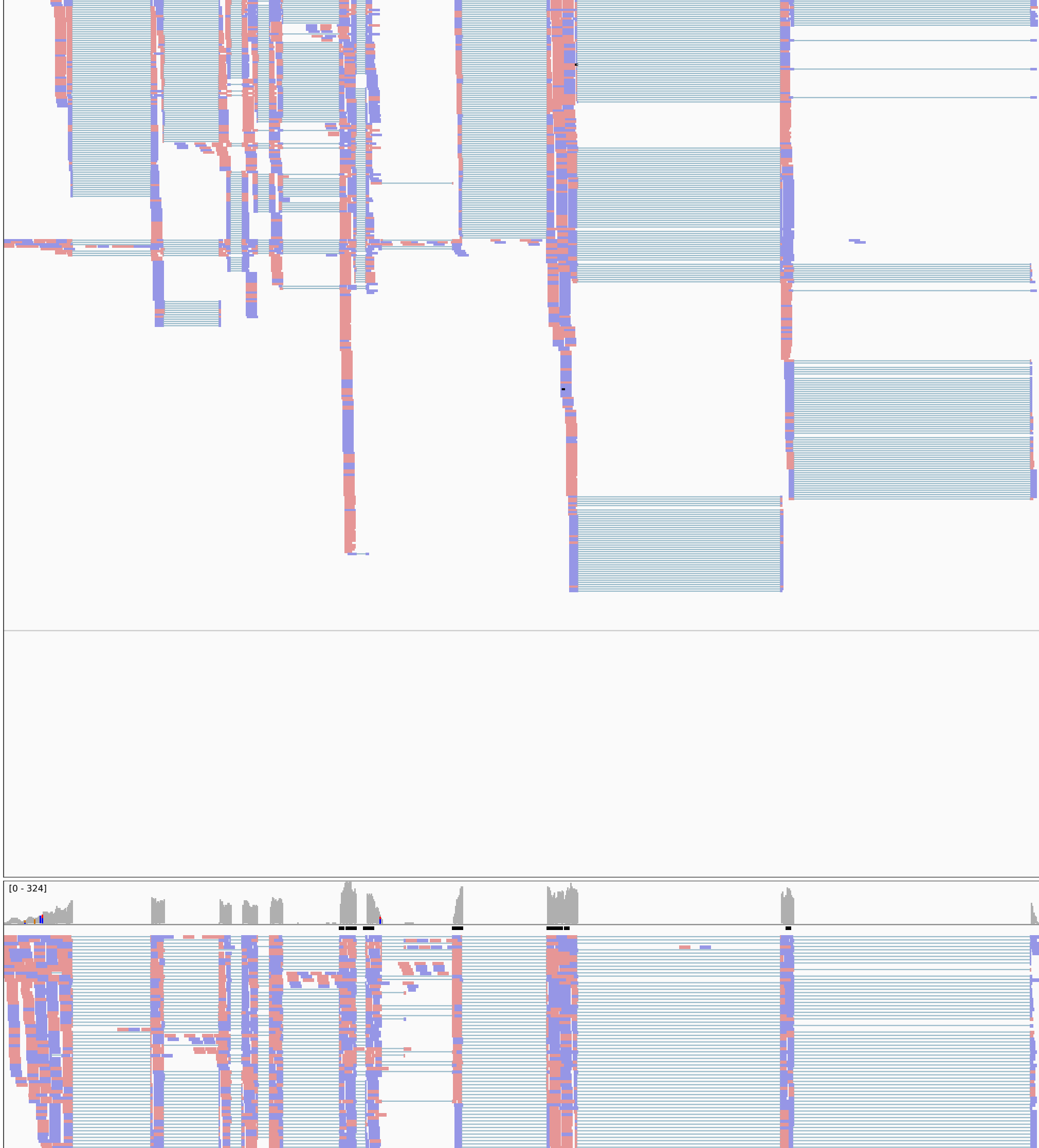
R0GE-jMock-3h.uniq.bam Coverage
R0GE-jMock-3h.uniq.bam



R0GE-jMock-7h.uniq.bam Coverage
R0GE-jMock-7h.uniq.bam



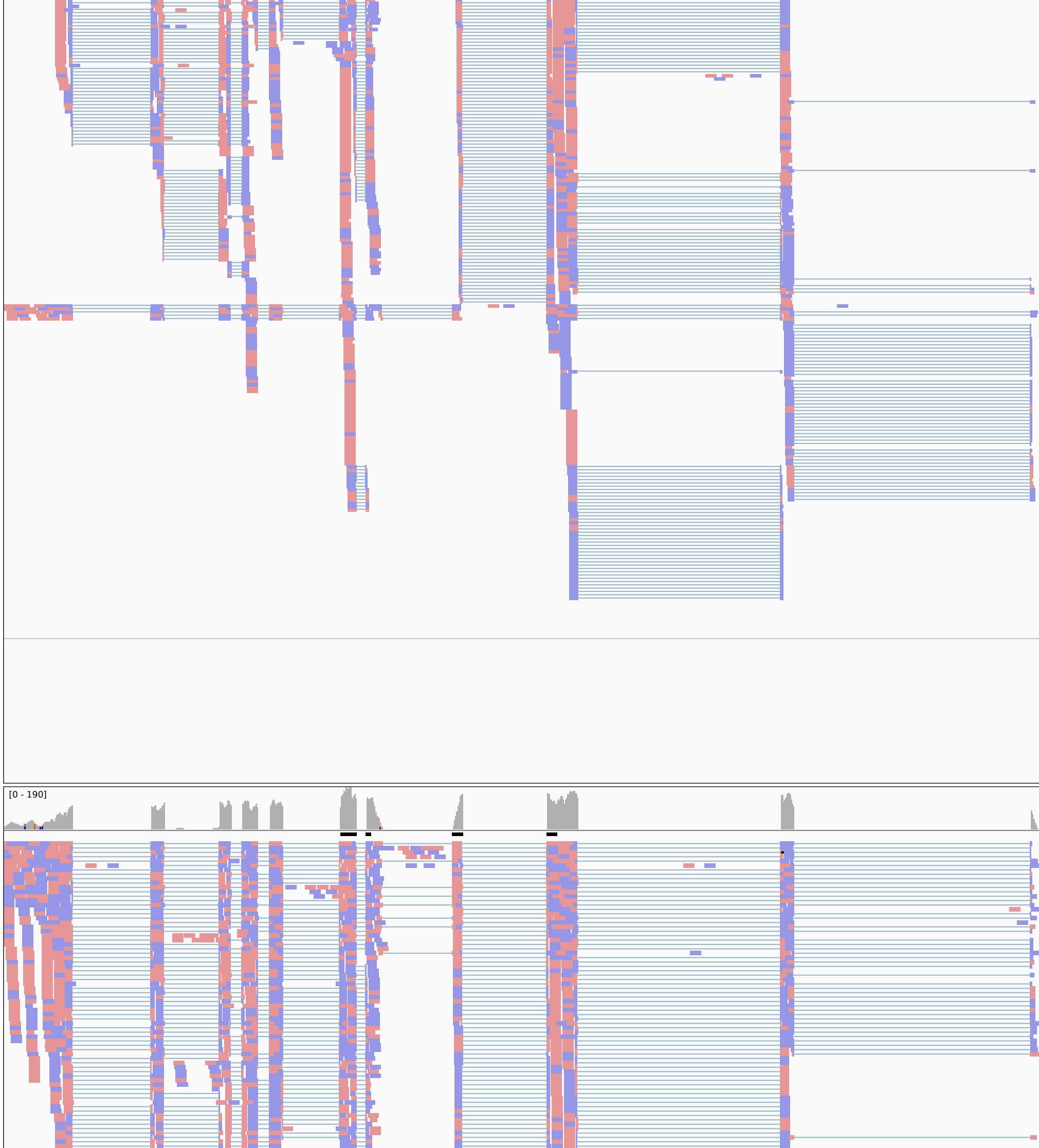
R0GE-jMock-23h.uniq.bam Coverage
R0GE-jMock-23h.uniq.bam



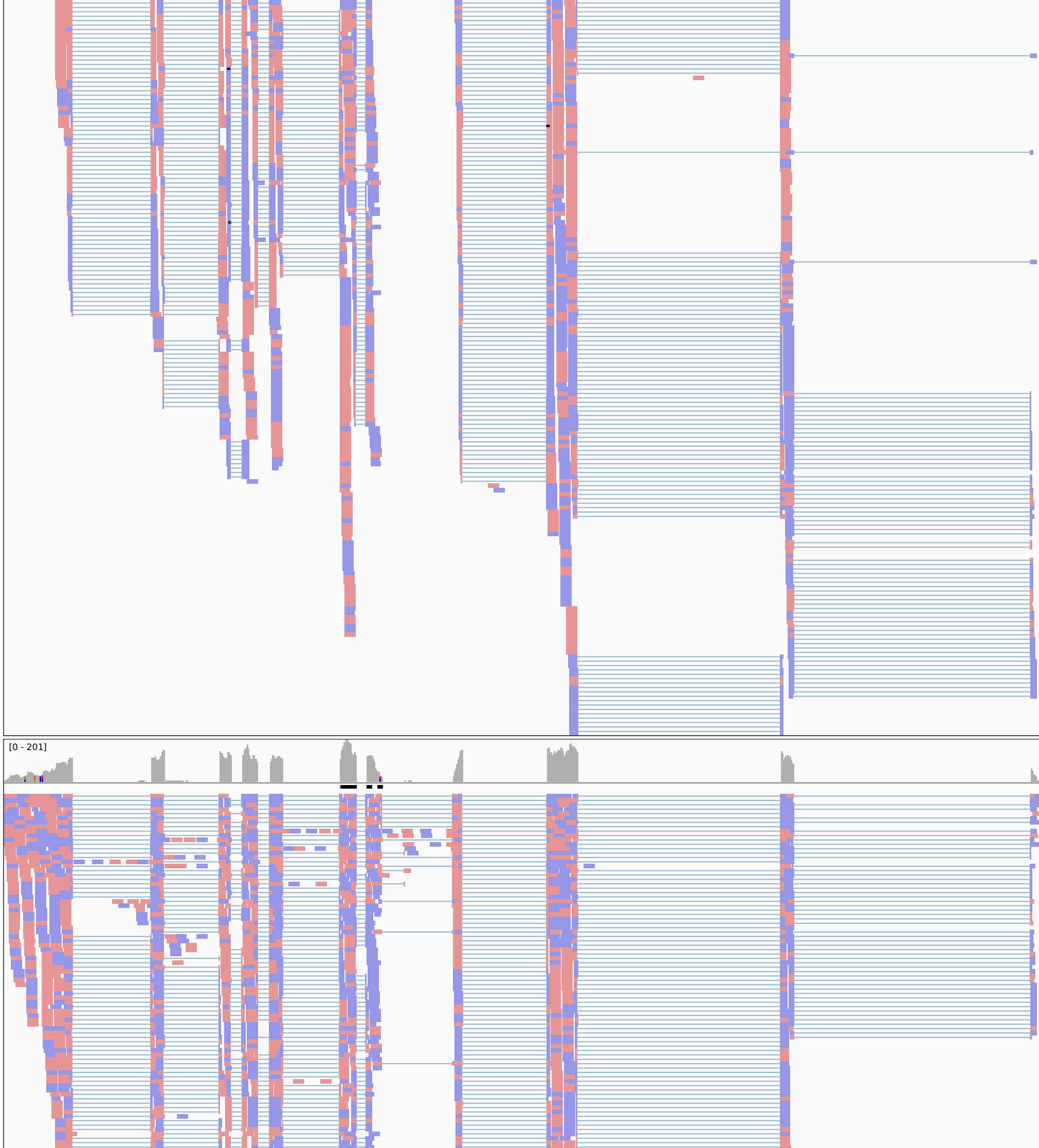
R0GE-jEBOV-3h.uniq.bam Coverage
R0GE-jEBOV-3h.uniq.bam



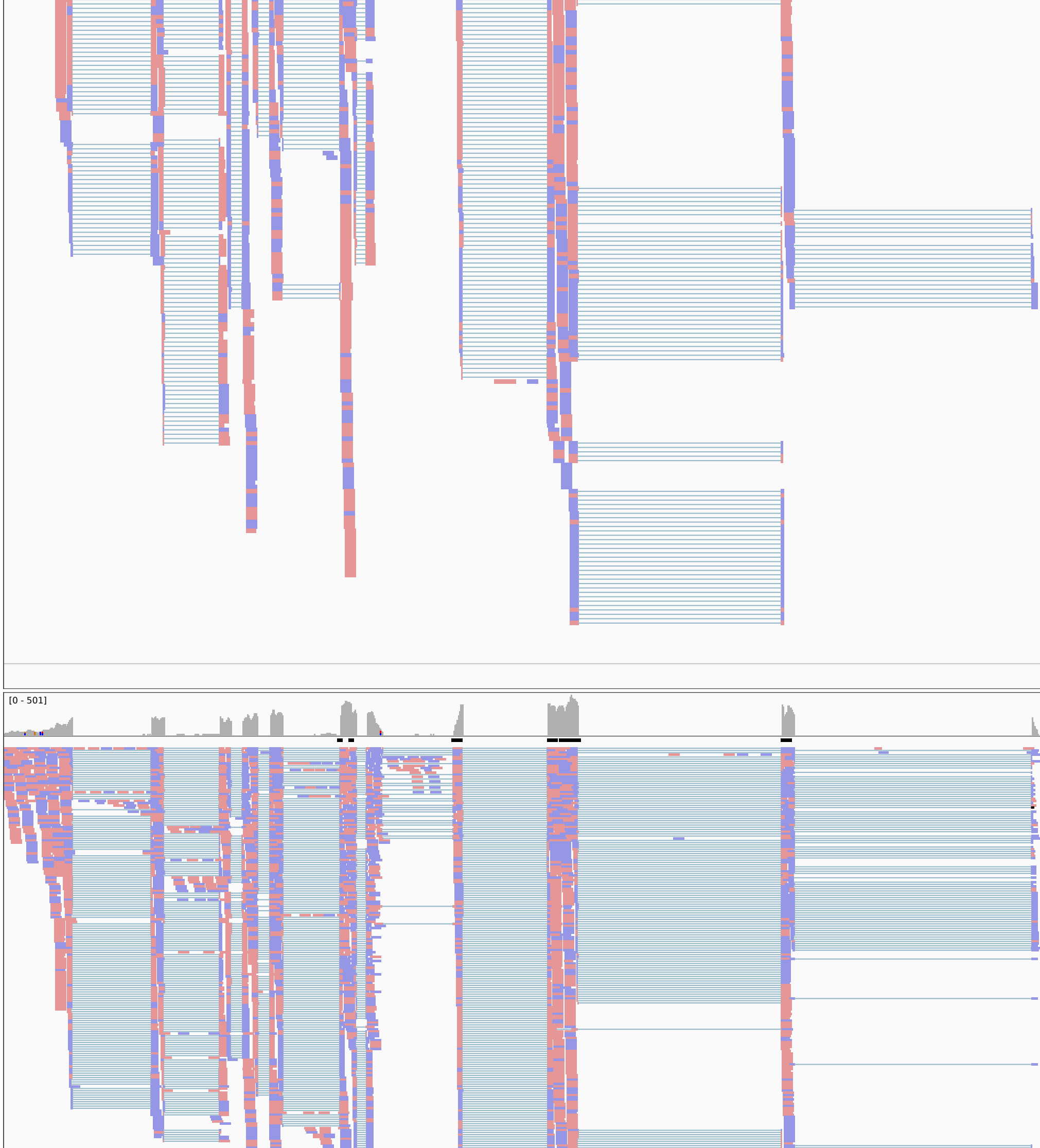
R0GE-jEBOV-7h.uniq.bam Coverage
R0GE-jEBOV-7h.uniq.bam



R0GE-jEBOV-23h.uniq.bam Coverage
R0GE-jEBOV-23h.uniq.bam



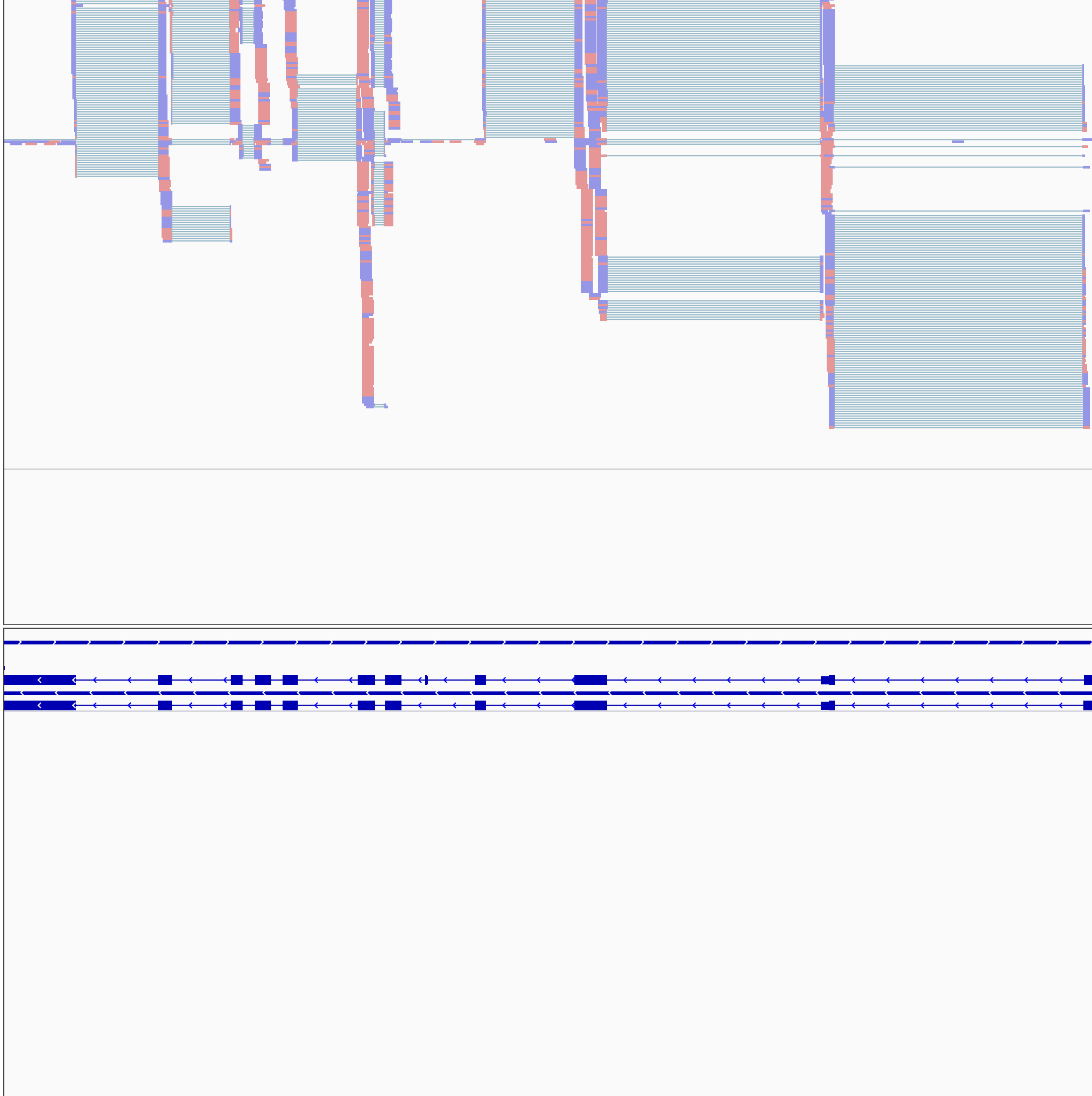
R0GE-jMARV-3h.uniq.bam Coverage
R0GE-jMARV-3h.uniq.bam



R0GE-jMARV-7h.uniq.bam Coverage
R0GE-jMARV-7h.uniq.bam



R0GE-jMARV-23h.uniq.bam Coverage
R0GE-jMARV-23h.uniq.bam



rae.sorted.gff3

