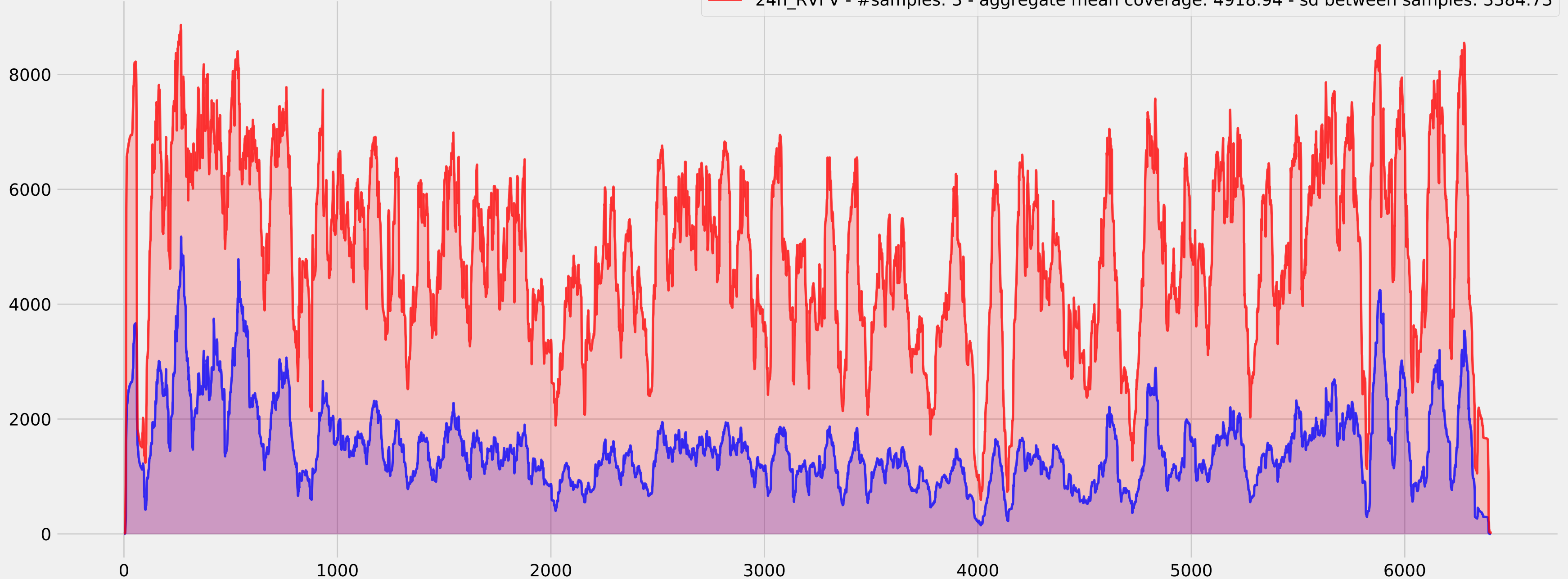


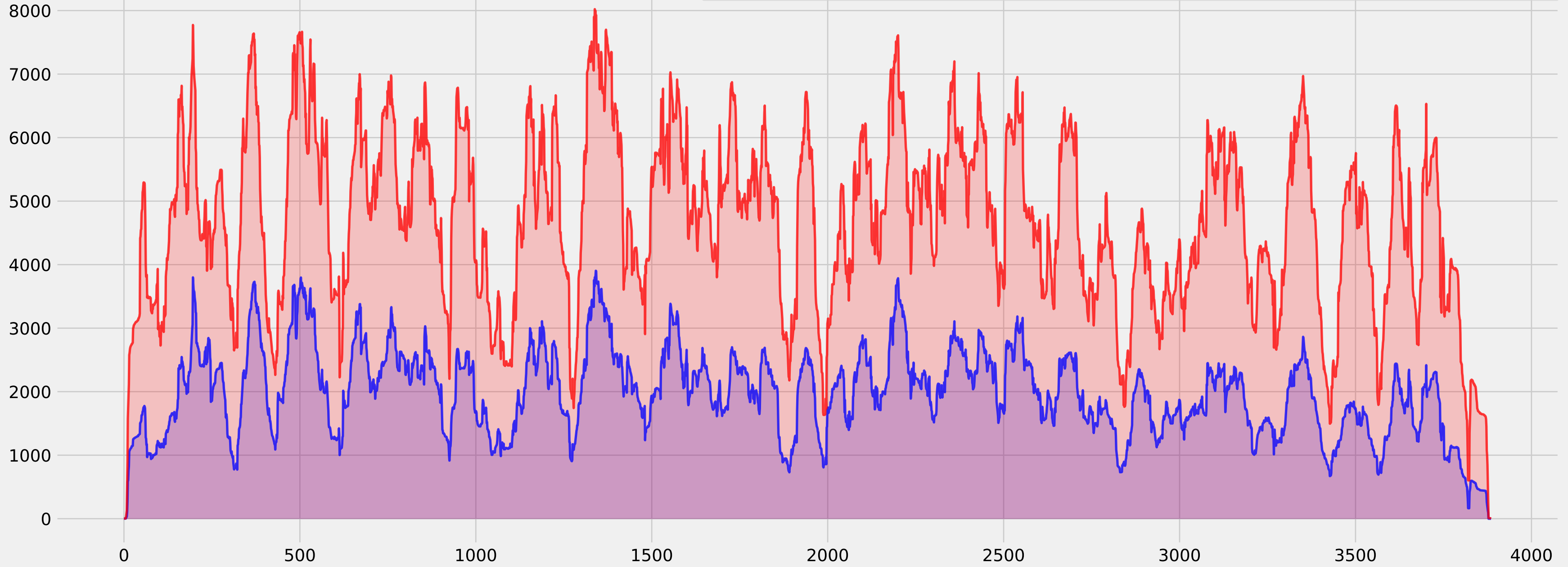
# Coverage for NC\_014397.1:1-6404 - normalized

6h\_RVFV - #samples: 3 - aggregate mean coverage: 1498.23 - sd between samples: 883.48  
24h\_RVFV - #samples: 3 - aggregate mean coverage: 4918.94 - sd between samples: 3384.73



# Coverage for NC\_014396.1:1-3885 - normalized

6h\_RVFV - #samples: 3 - aggregate mean coverage: 1987.24 - sd between samples: 1142.37  
24h\_RVFV - #samples: 3 - aggregate mean coverage: 4701.70 - sd between samples: 3426.68



# Coverage for NC\_014395.1:1-1690 - normalized

6h\_RVFV - #samples: 3 - aggregate mean coverage: 3159.97 - sd between samples: 1675.15  
24h\_RVFV - #samples: 3 - aggregate mean coverage: 4847.21 - sd between samples: 2125.36

