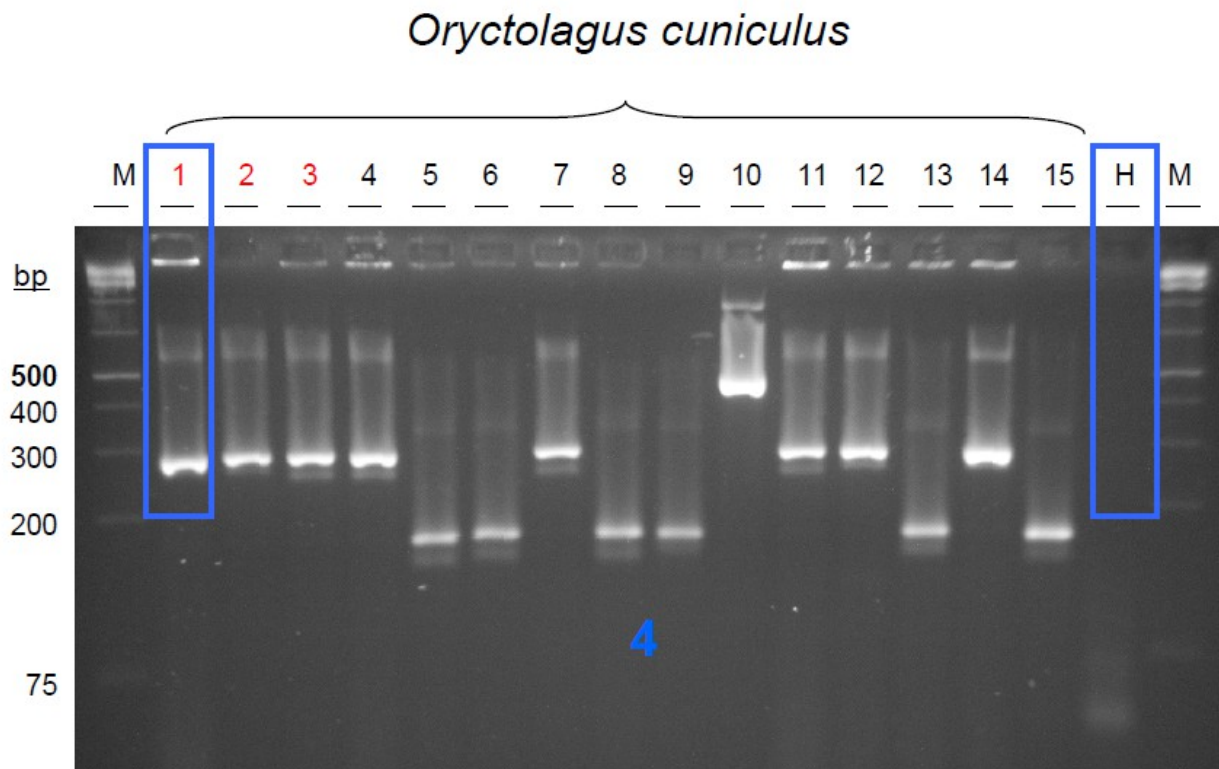


pRNAs and boxes: Experimental verification

RNA isolation and subsequent RT-PCR are described in the Material and Methods section of manuscript.

Results of Colony-PCR (pRNAs+Boxes)

Clones showing the expected fragment length are marked by red letters and were sent to sequencing. Blue boxes indicate sequences which fitted to *in silico* predictions (sequences of the clones and the predicted pRNA sequences were aligned using ClustalW) and were further analyzed.



H = water control

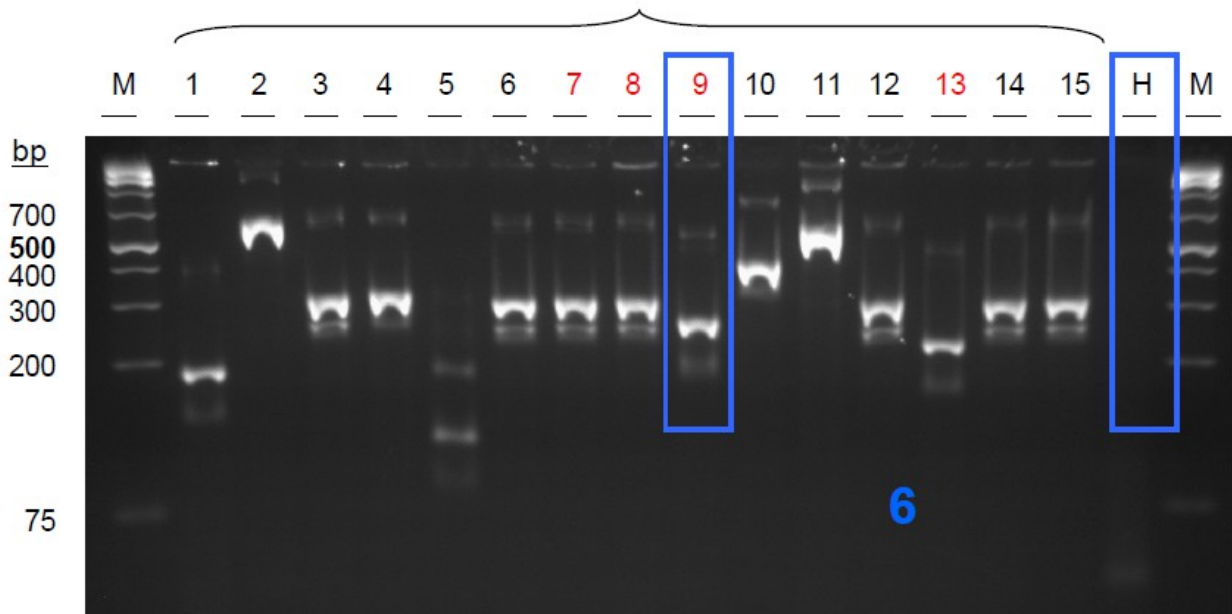
1-15 = number of the clone

Gel = 4% Agarose in 0.5x TBE (3% Sieve Agarose, 1% reg. Agarose)

Marker = 1 kb plus DNA ladder

Expected fragment length = 286 bp

Pongo pygmaeus



H = water control

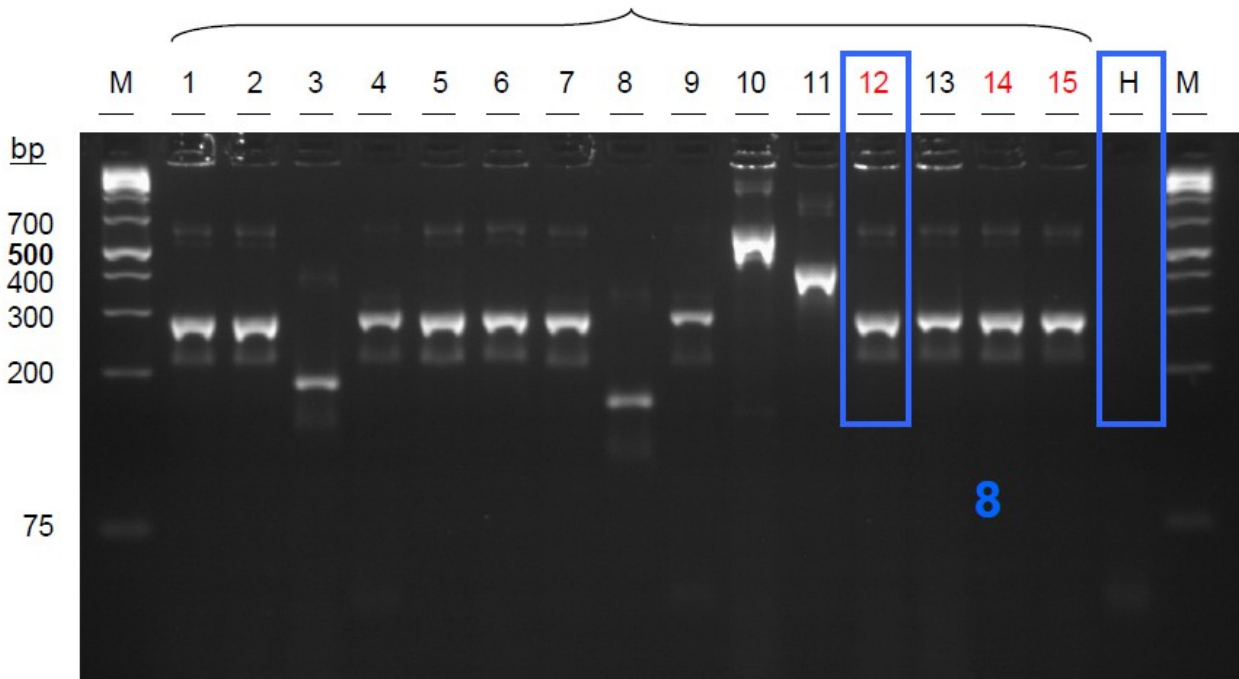
1-15 = number of the clone

Gel = 4% Agarose in 0.5x TBE (3% Sieve Agarose, 1% reg. Agarose)

Marker = 1 kb plus DNA ladder

Expected fragment length = 264 bp

Vicugna pacos



H = water control

1-15 = number of the clone

Gel = 4% Agarose in 0.5x TBE (3% Sieve Agarose, 1% reg. Agarose)

Marker = 1 kb plus DNA ladder

Expected fragment length = 283 bp