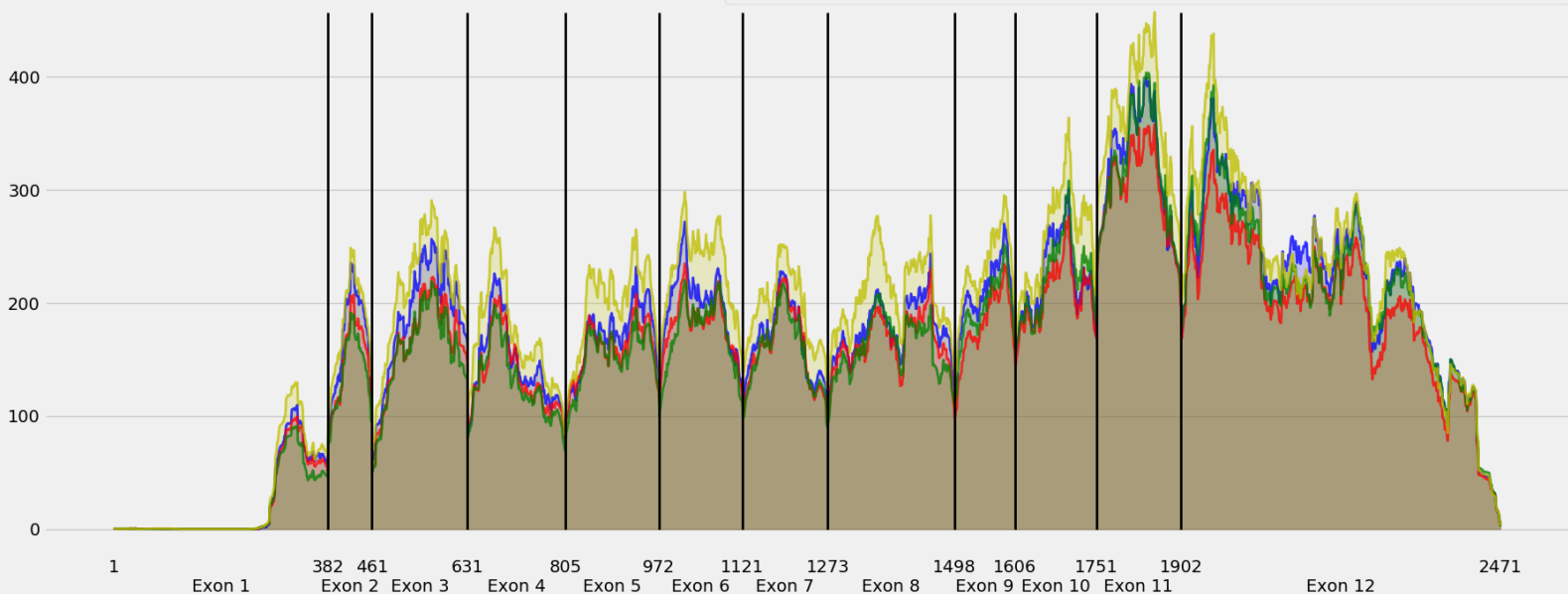


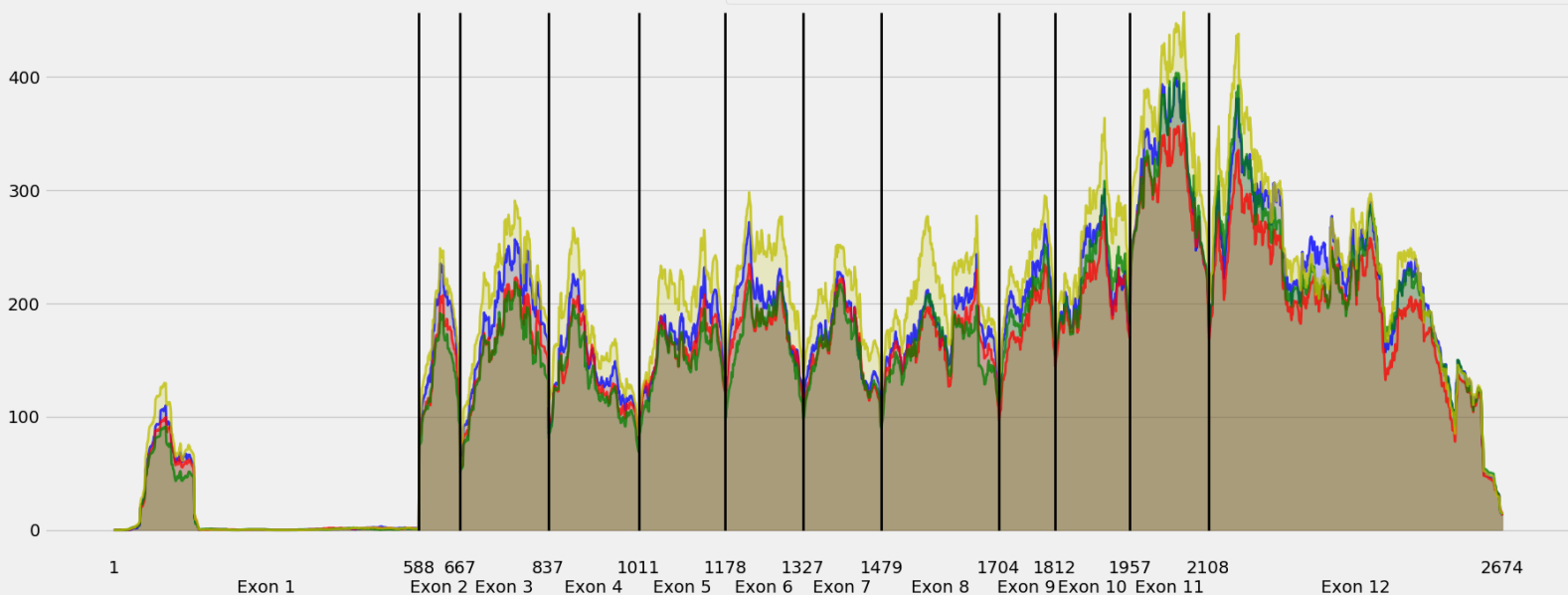
Coverage for chr18:77773729-77782869 - specific regions  
Strand: Plus

9 months - #samples: 5 - aggregate mean coverage: 172.50 - sd between samples: 6.38  
15 months - #samples: 5 - aggregate mean coverage: 157.37 - sd between samples: 9.04  
24 months - #samples: 5 - aggregate mean coverage: 160.70 - sd between samples: 12.28  
30 months - #samples: 5 - aggregate mean coverage: 193.24 - sd between samples: 16.59



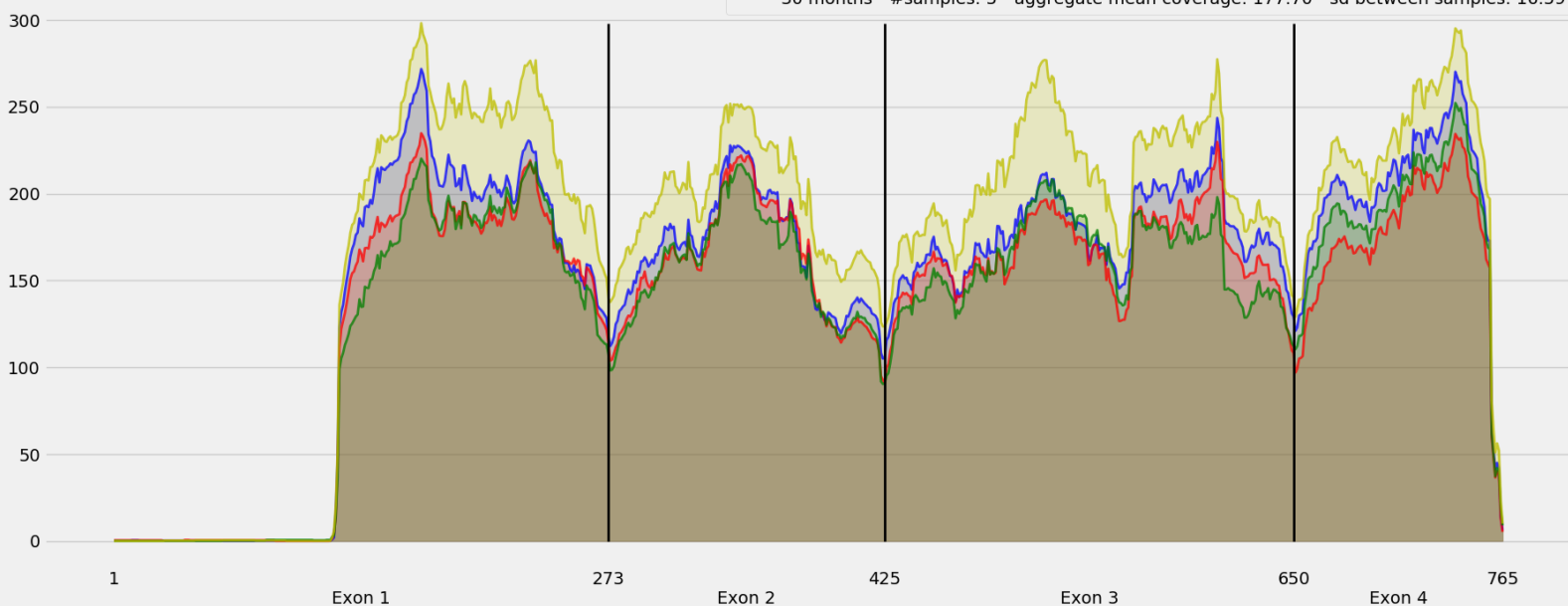
Coverage for chr18:7773729-7778269 - specific regions  
Strand: Plus

9 months - #samples: 5 - aggregate mean coverage: 159.52 - sd between samples: 6.38  
15 months - #samples: 5 - aggregate mean coverage: 145.57 - sd between samples: 9.04  
24 months - #samples: 5 - aggregate mean coverage: 148.60 - sd between samples: 12.28  
30 months - #samples: 5 - aggregate mean coverage: 178.68 - sd between samples: 16.59



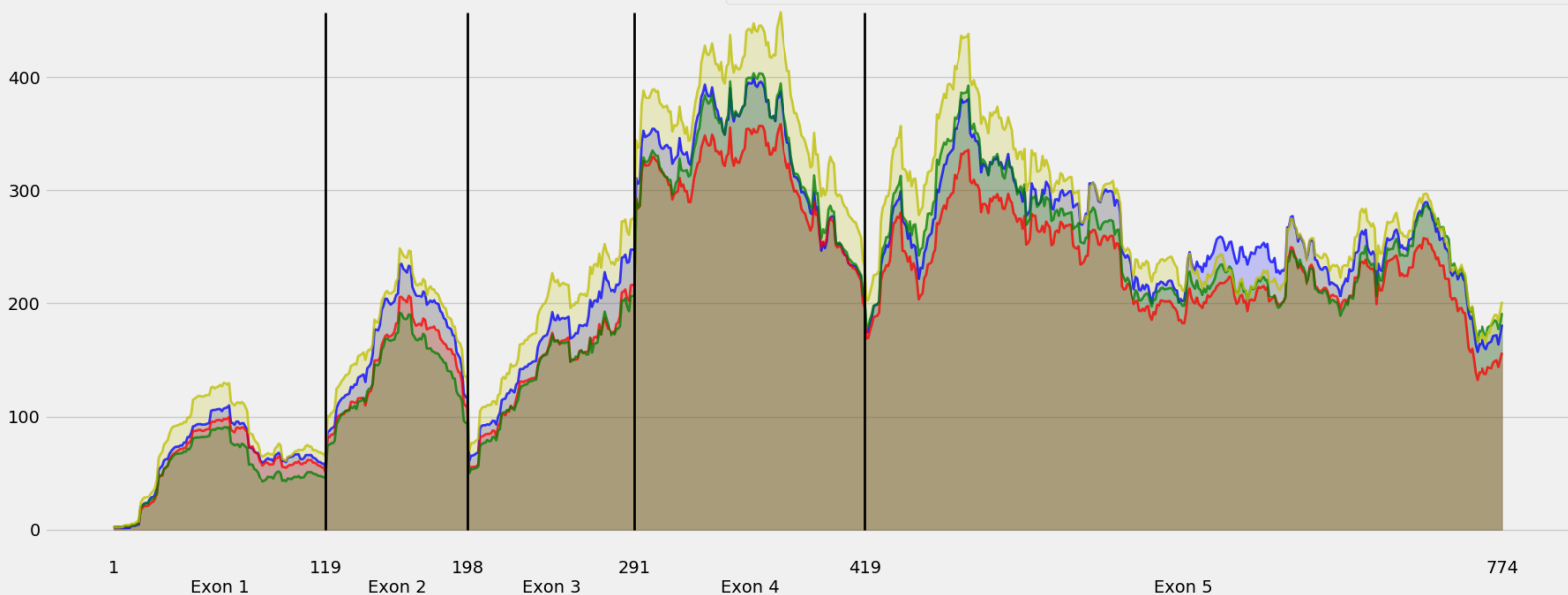
Coverage for chr18:77773729-77782869 - specific regions  
Strand: Plus

9 months - #samples: 5 - aggregate mean coverage: 153.53 - sd between samples: 6.38  
15 months - #samples: 5 - aggregate mean coverage: 141.36 - sd between samples: 9.04  
24 months - #samples: 5 - aggregate mean coverage: 140.05 - sd between samples: 12.28  
30 months - #samples: 5 - aggregate mean coverage: 177.70 - sd between samples: 16.59



Coverage for chr18:77773729-77782869 - specific regions  
Strand: Plus

9 months - #samples: 5 - aggregate mean coverage: 218.97 - sd between samples: 6.38  
15 months - #samples: 5 - aggregate mean coverage: 197.33 - sd between samples: 9.04  
24 months - #samples: 5 - aggregate mean coverage: 207.15 - sd between samples: 12.28  
30 months - #samples: 5 - aggregate mean coverage: 239.08 - sd between samples: 16.59



Coverage for chr18:7773729-77782869 - specific regions  
Strand: Plus

9 months - #samples: 5 - aggregate mean coverage: 184.34 - sd between samples: 6.38  
15 months - #samples: 5 - aggregate mean coverage: 170.40 - sd between samples: 9.04  
24 months - #samples: 5 - aggregate mean coverage: 174.87 - sd between samples: 12.28  
30 months - #samples: 5 - aggregate mean coverage: 211.26 - sd between samples: 16.59

