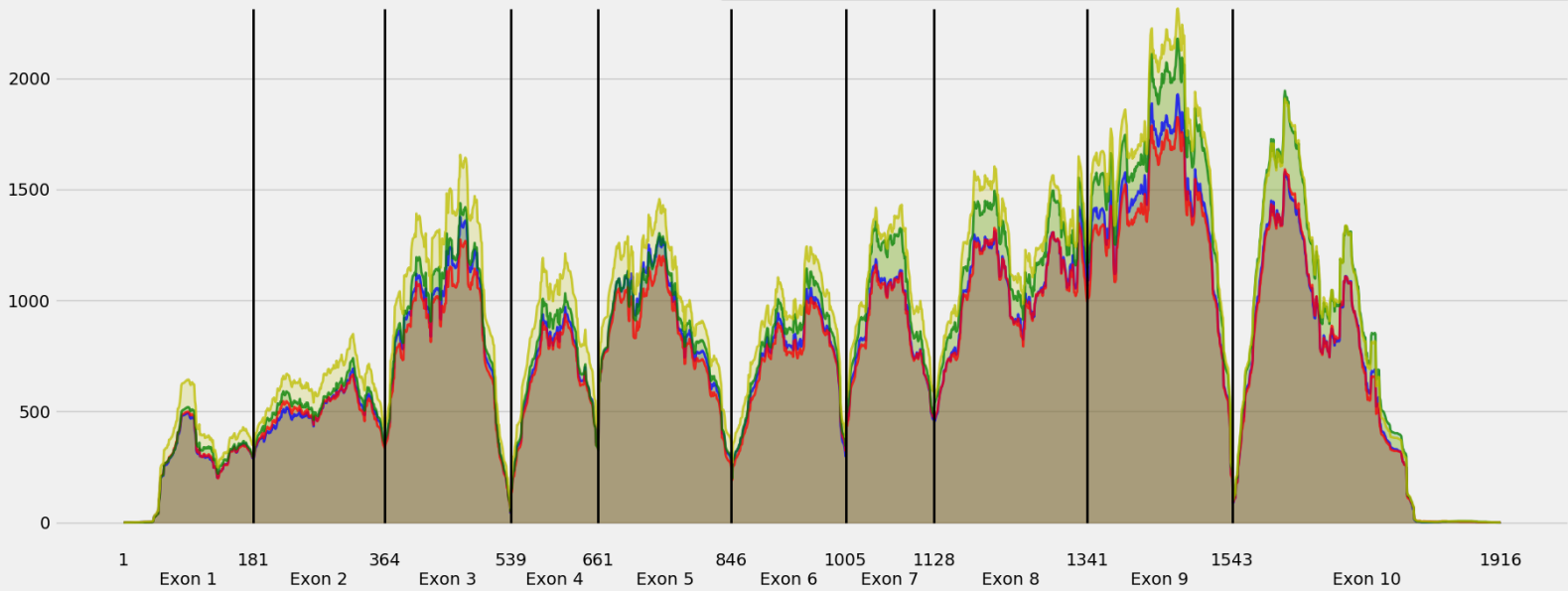


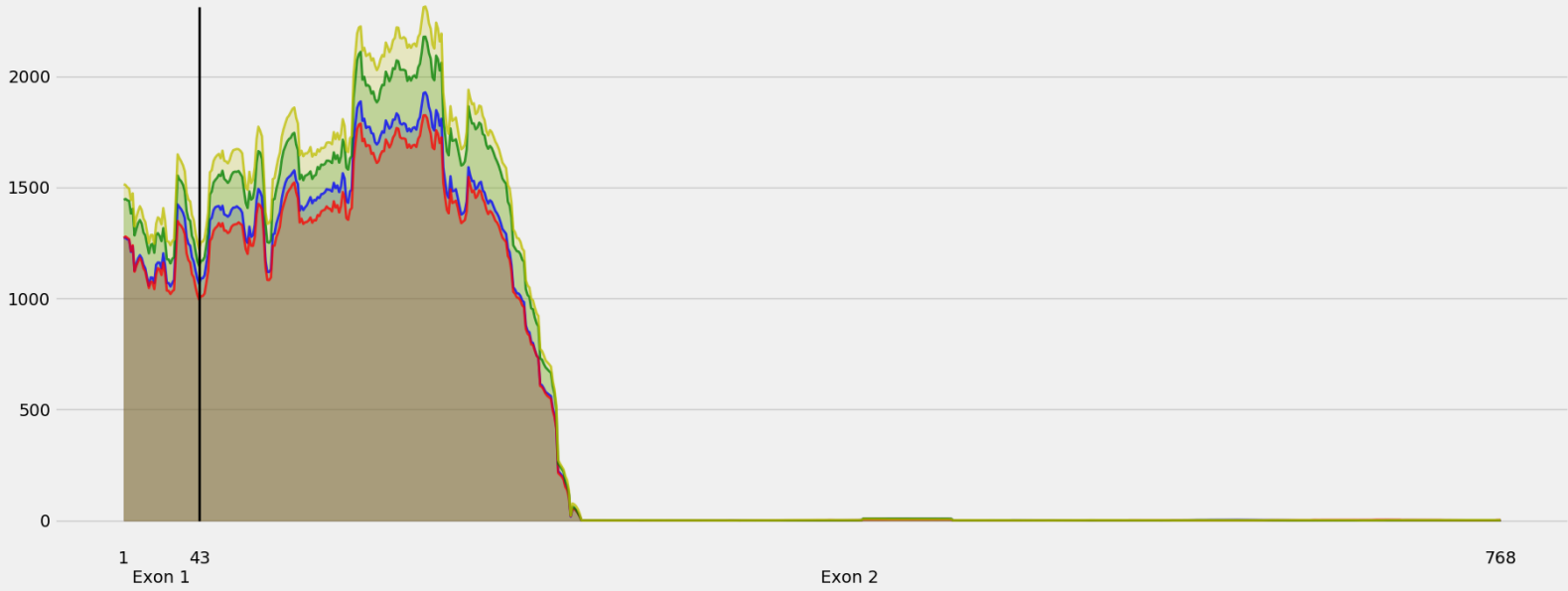
Coverage for chr10:128083273-128090391 - specific regions
Strand: Plus

9 months - #samples: 5 - aggregate mean coverage: 772.69 - sd between samples: 17.50
15 months - #samples: 5 - aggregate mean coverage: 750.27 - sd between samples: 12.31
24 months - #samples: 5 - aggregate mean coverage: 852.12 - sd between samples: 111.21
30 months - #samples: 5 - aggregate mean coverage: 929.71 - sd between samples: 76.76



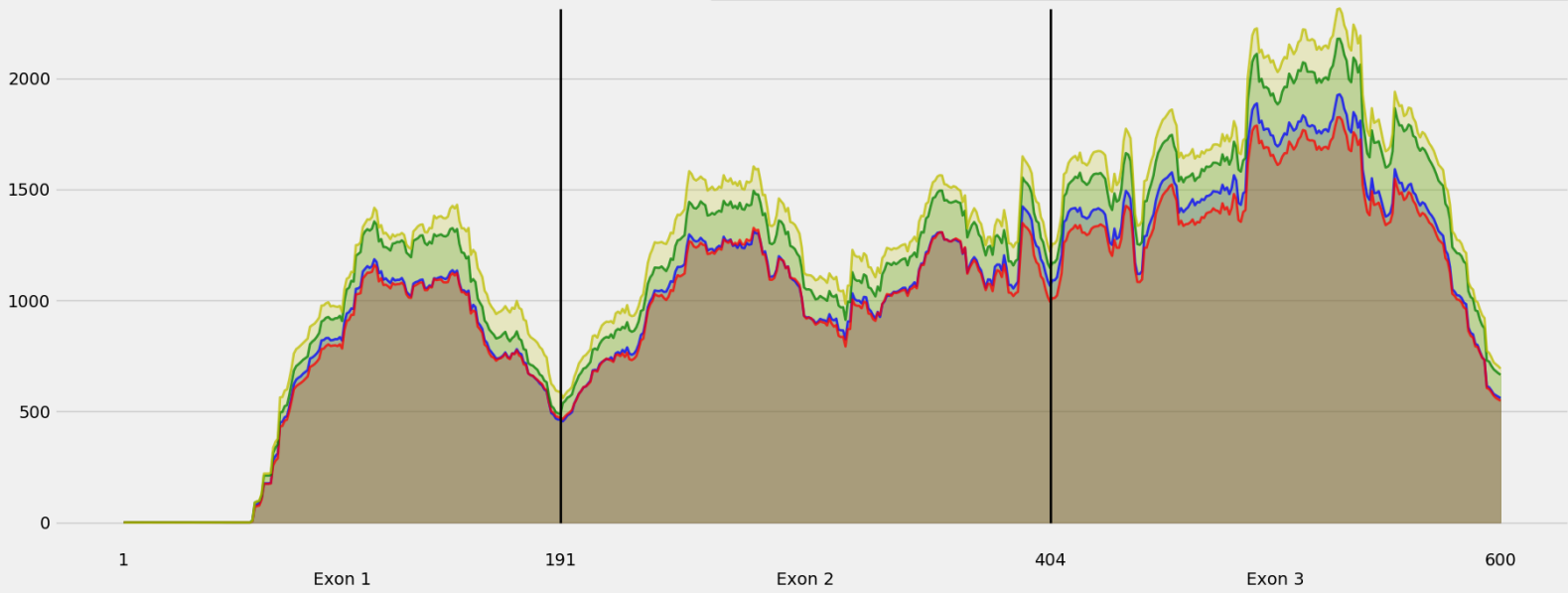
Coverage for chr10:128083273-128090391 - specific regions
Strand: Plus

9 months - #samples: 5 - aggregate mean coverage: 438.42 - sd between samples: 17.50
15 months - #samples: 5 - aggregate mean coverage: 420.38 - sd between samples: 12.31
24 months - #samples: 5 - aggregate mean coverage: 493.02 - sd between samples: 111.21
30 months - #samples: 5 - aggregate mean coverage: 522.01 - sd between samples: 76.76



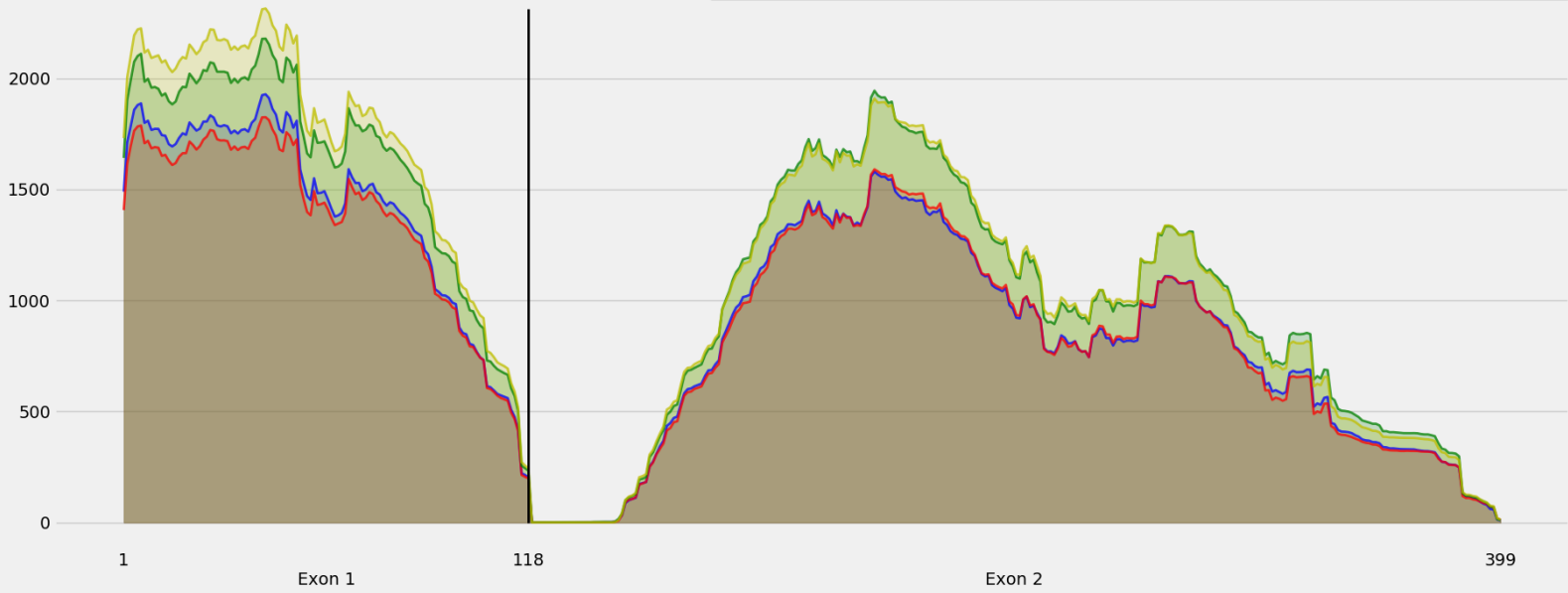
Coverage for chr10:128083273-128090391 - specific
Strand: Plus

9 months - #samples: 5 - aggregate mean coverage: 1025.17 - sd between samples: 17.50
15 months - #samples: 5 - aggregate mean coverage: 995.63 - sd between samples: 12.31
24 months - #samples: 5 - aggregate mean coverage: 1154.44 - sd between samples: 111.21
30 months - #samples: 5 - aggregate mean coverage: 1232.41 - sd between samples: 76.76



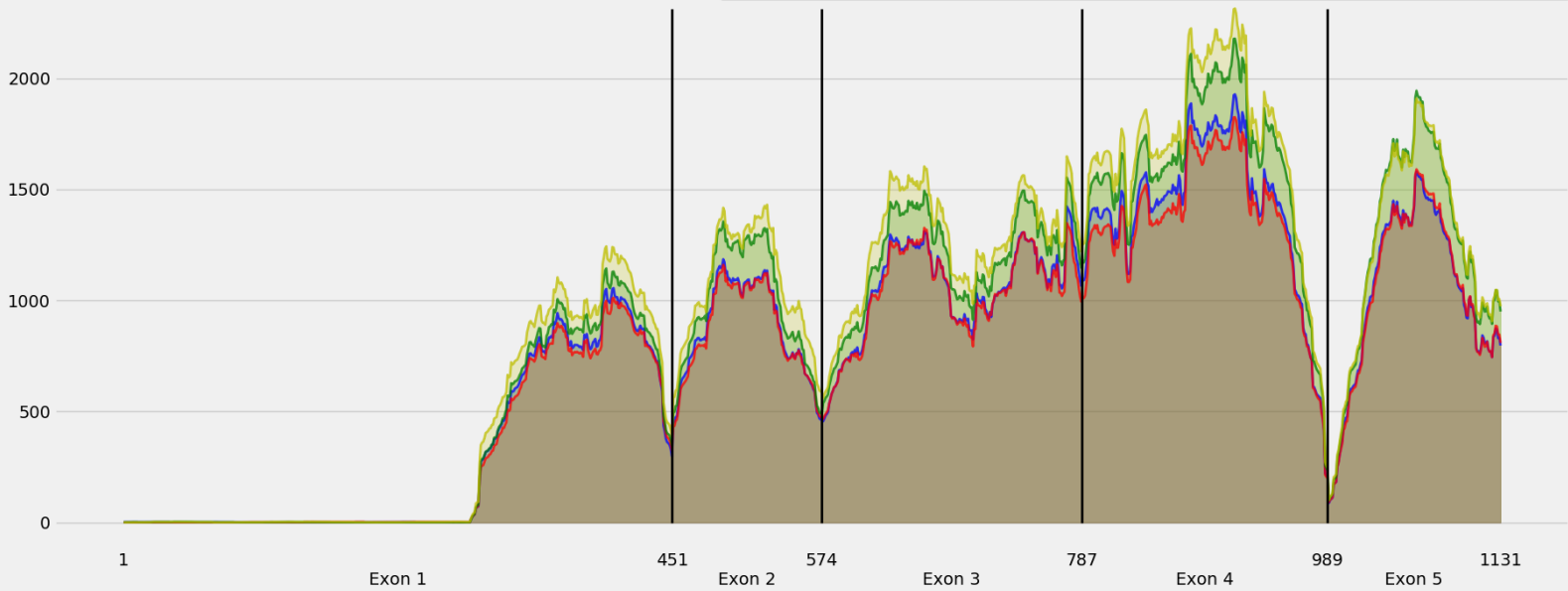
Coverage for chr10:128083273-128090391 - specific
Strand: Plus

9 months - #samples: 5 - aggregate mean coverage: 946.68 - sd between samples: 17.50
15 months - #samples: 5 - aggregate mean coverage: 927.55 - sd between samples: 12.31
24 months - #samples: 5 - aggregate mean coverage: 1111.39 - sd between samples: 111.21
30 months - #samples: 5 - aggregate mean coverage: 1137.04 - sd between samples: 76.76



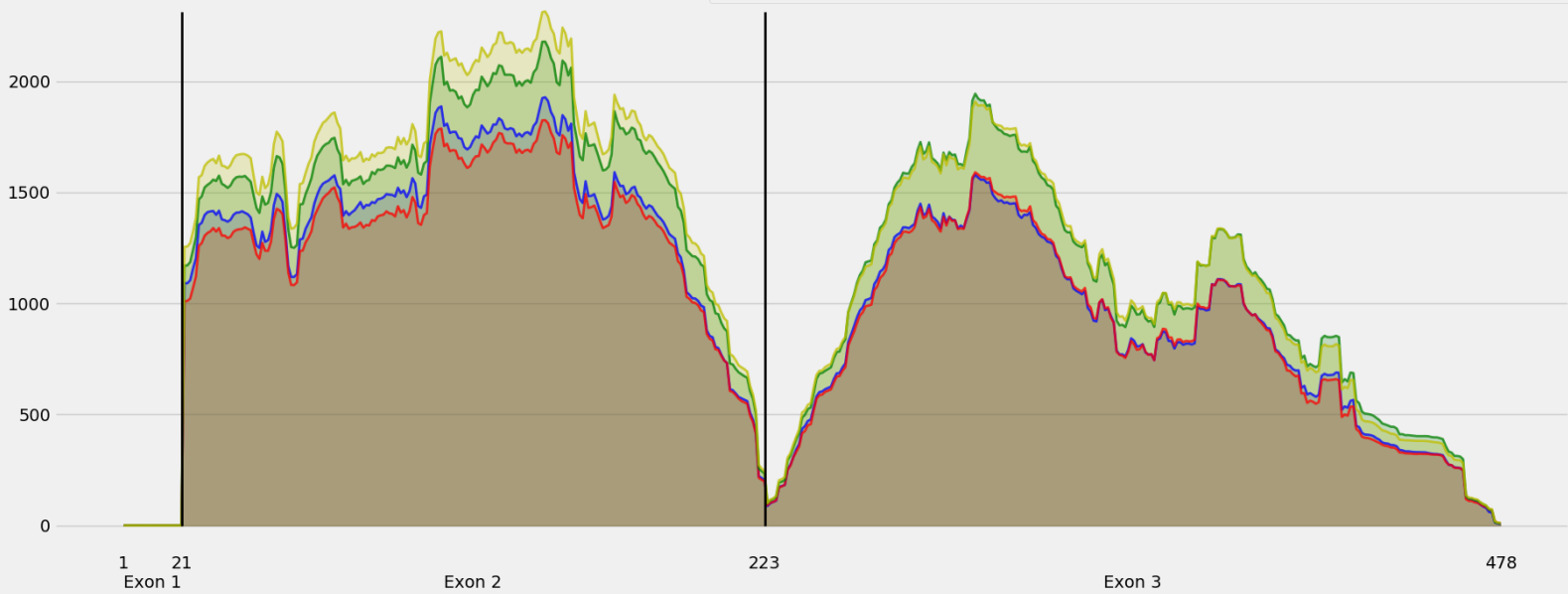
Coverage for chr10:128083273-128090391 - specific regions
Strand: Plus

9 months - #samples: 5 - aggregate mean coverage: 776.68 - sd between samples: 17.50
15 months - #samples: 5 - aggregate mean coverage: 757.10 - sd between samples: 12.31
24 months - #samples: 5 - aggregate mean coverage: 877.20 - sd between samples: 111.21
30 months - #samples: 5 - aggregate mean coverage: 931.68 - sd between samples: 76.76



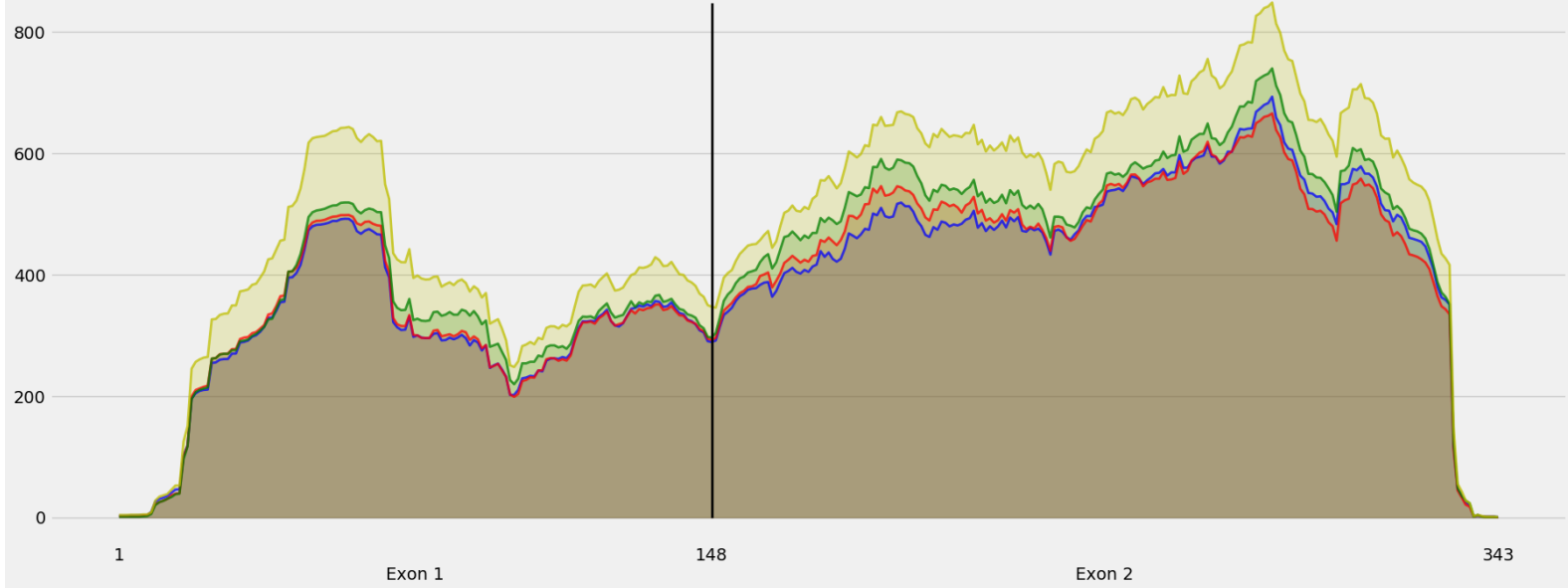
Coverage for chr10:128083273-128090391 - specific
Strand: Plus

9 months - #samples: 5 - aggregate mean coverage: 1035.59 - sd between samples: 17.50
15 months - #samples: 5 - aggregate mean coverage: 1007.34 - sd between samples: 12.31
24 months - #samples: 5 - aggregate mean coverage: 1198.46 - sd between samples: 111.21
30 months - #samples: 5 - aggregate mean coverage: 1236.34 - sd between samples: 76.76



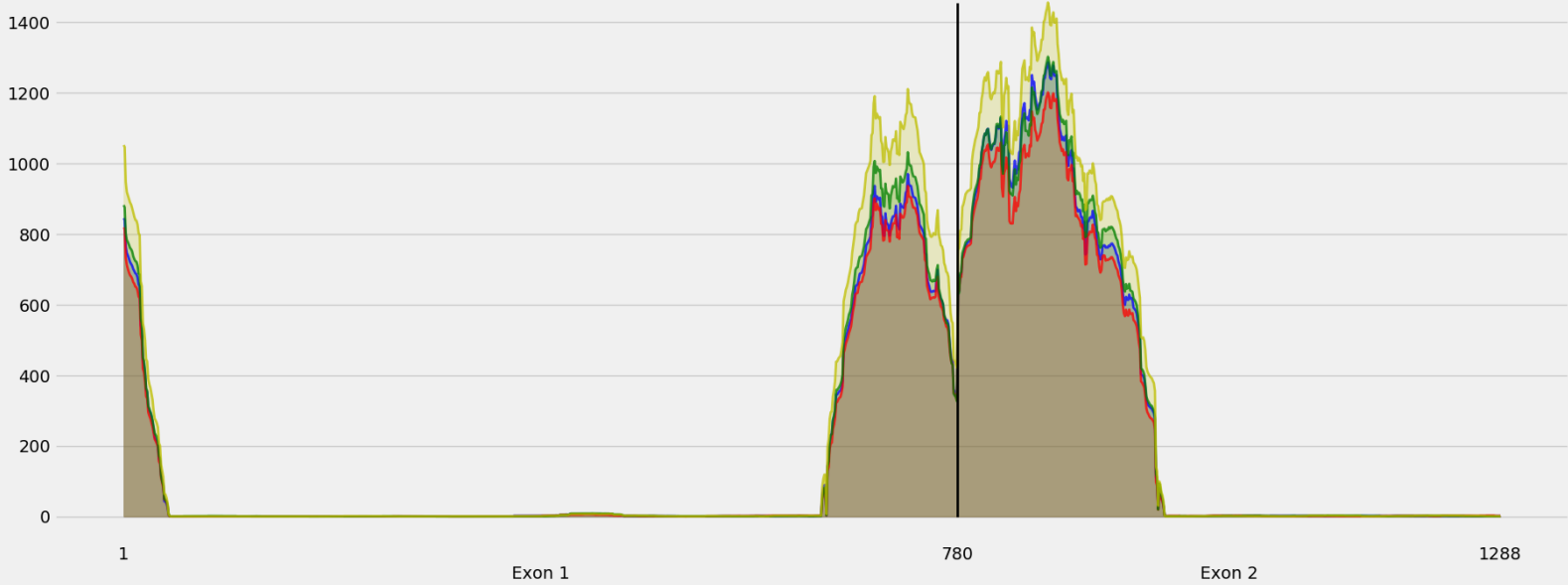
Coverage for chr10:128083273-128090391 - specific regions
Strand: Plus

9 months - #samples: 5 - aggregate mean coverage: 392.26 - sd between samples: 17.50
15 months - #samples: 5 - aggregate mean coverage: 394.72 - sd between samples: 12.31
24 months - #samples: 5 - aggregate mean coverage: 419.99 - sd between samples: 111.21
30 months - #samples: 5 - aggregate mean coverage: 490.30 - sd between samples: 76.76



Coverage for chr10:128083273-128090391 - specific regions
Strand: Plus

9 months - #samples: 5 - aggregate mean coverage: 207.51 - sd between samples: 17.50
15 months - #samples: 5 - aggregate mean coverage: 197.28 - sd between samples: 12.31
24 months - #samples: 5 - aggregate mean coverage: 214.15 - sd between samples: 111.21
30 months - #samples: 5 - aggregate mean coverage: 246.41 - sd between samples: 76.76



Coverage for chr10:128083273-128090391 - specific regions
Strand: Plus

9 months - #samples: 5 - aggregate mean coverage: 383.15 - sd between samples: 17.50
15 months - #samples: 5 - aggregate mean coverage: 371.82 - sd between samples: 12.31
24 months - #samples: 5 - aggregate mean coverage: 426.70 - sd between samples: 111.21
30 months - #samples: 5 - aggregate mean coverage: 455.20 - sd between samples: 76.76

