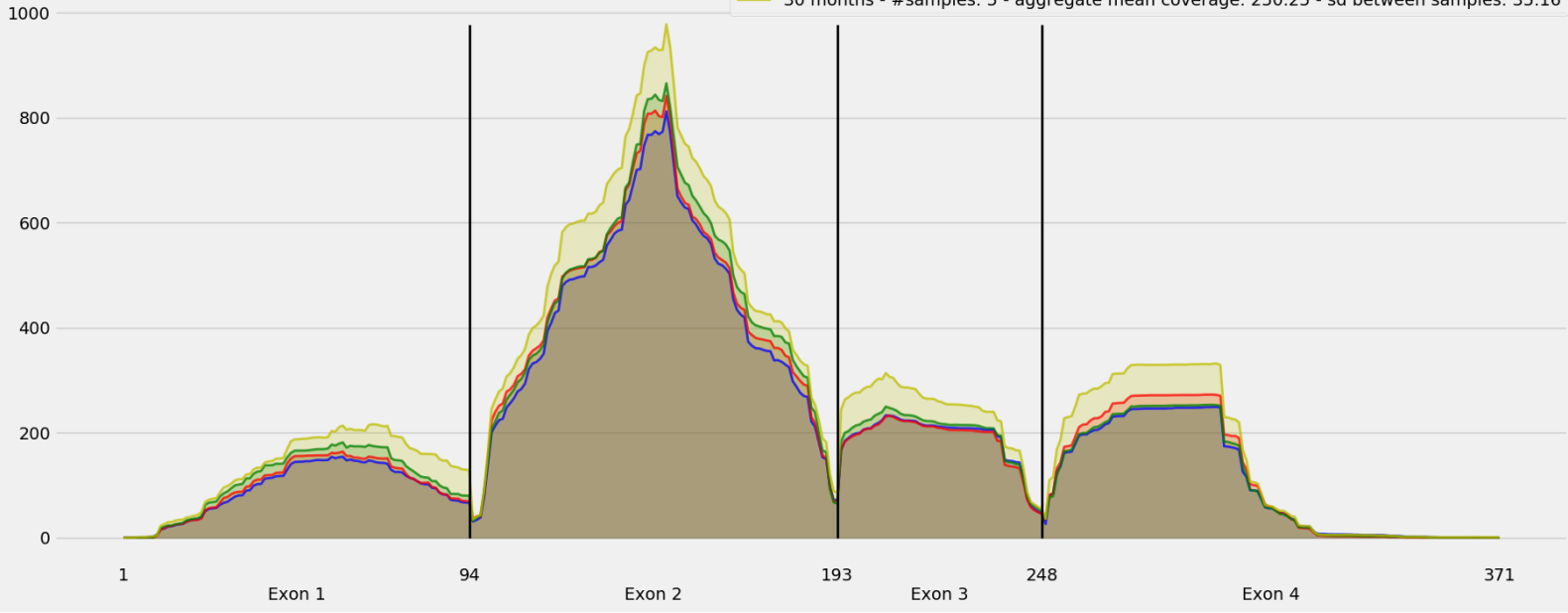


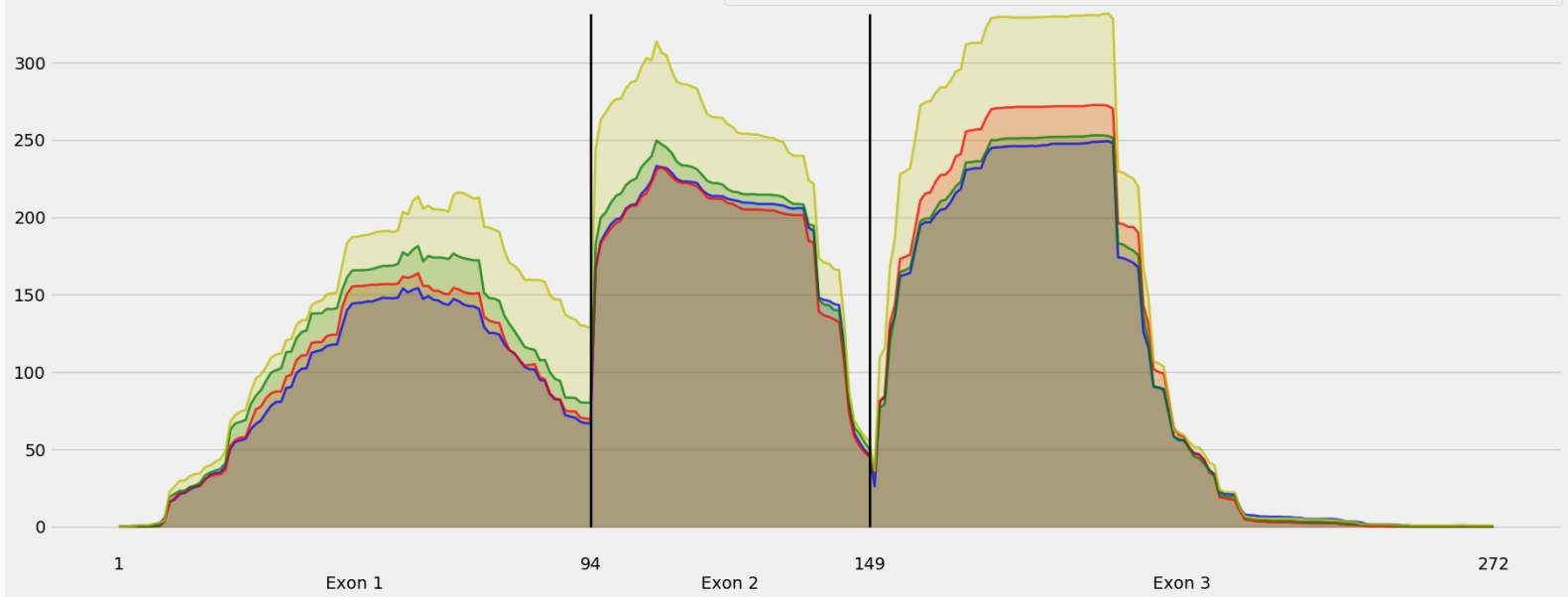
Coverage for chr5:108433244-108434448 - specific regions
Strand: Minus

9 months - #samples: 5 - aggregate mean coverage: 198.61 - sd between samples: 6.73
15 months - #samples: 5 - aggregate mean coverage: 207.15 - sd between samples: 7.18
24 months - #samples: 5 - aggregate mean coverage: 212.55 - sd between samples: 18.04
30 months - #samples: 5 - aggregate mean coverage: 250.25 - sd between samples: 35.16



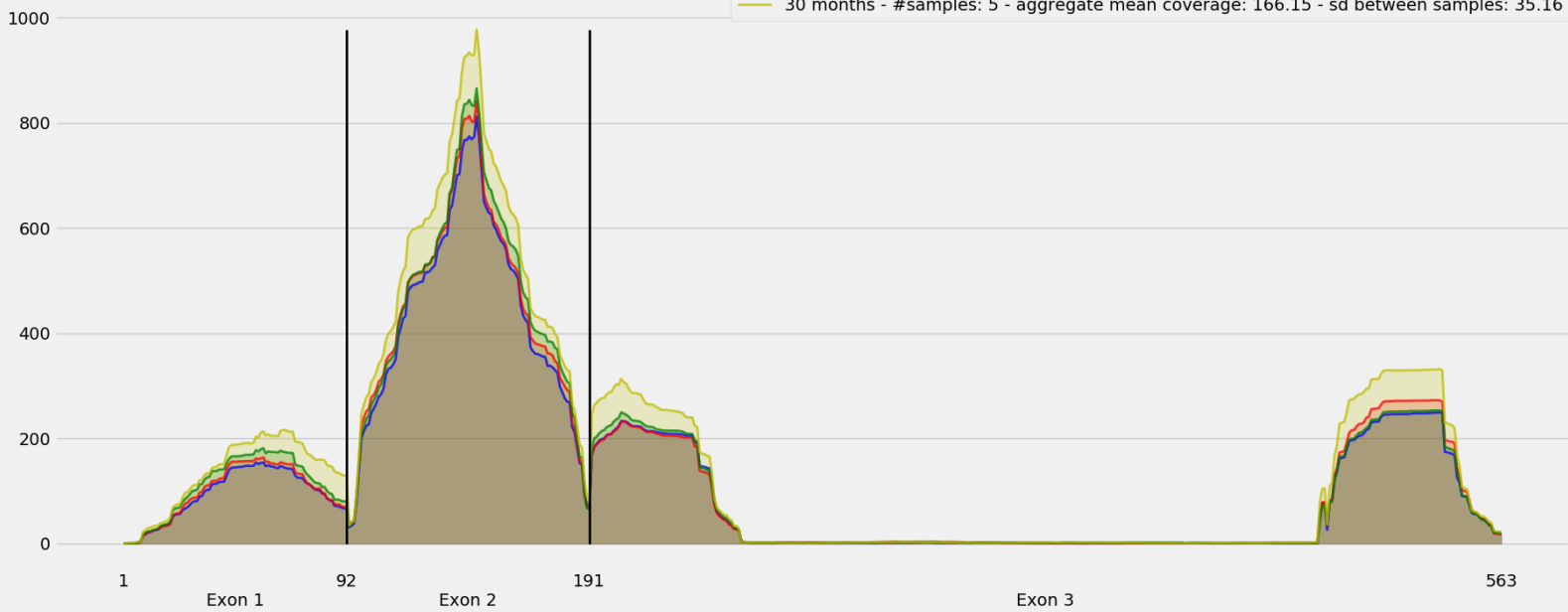
Coverage for chr5:108433244-108434448 - specific regions
Strand: Minus

9 months - #samples: 5 - aggregate mean coverage: 114.89 - sd between samples: 6.73
15 months - #samples: 5 - aggregate mean coverage: 119.77 - sd between samples: 7.18
24 months - #samples: 5 - aggregate mean coverage: 122.56 - sd between samples: 18.04
30 months - #samples: 5 - aggregate mean coverage: 153.05 - sd between samples: 35.16



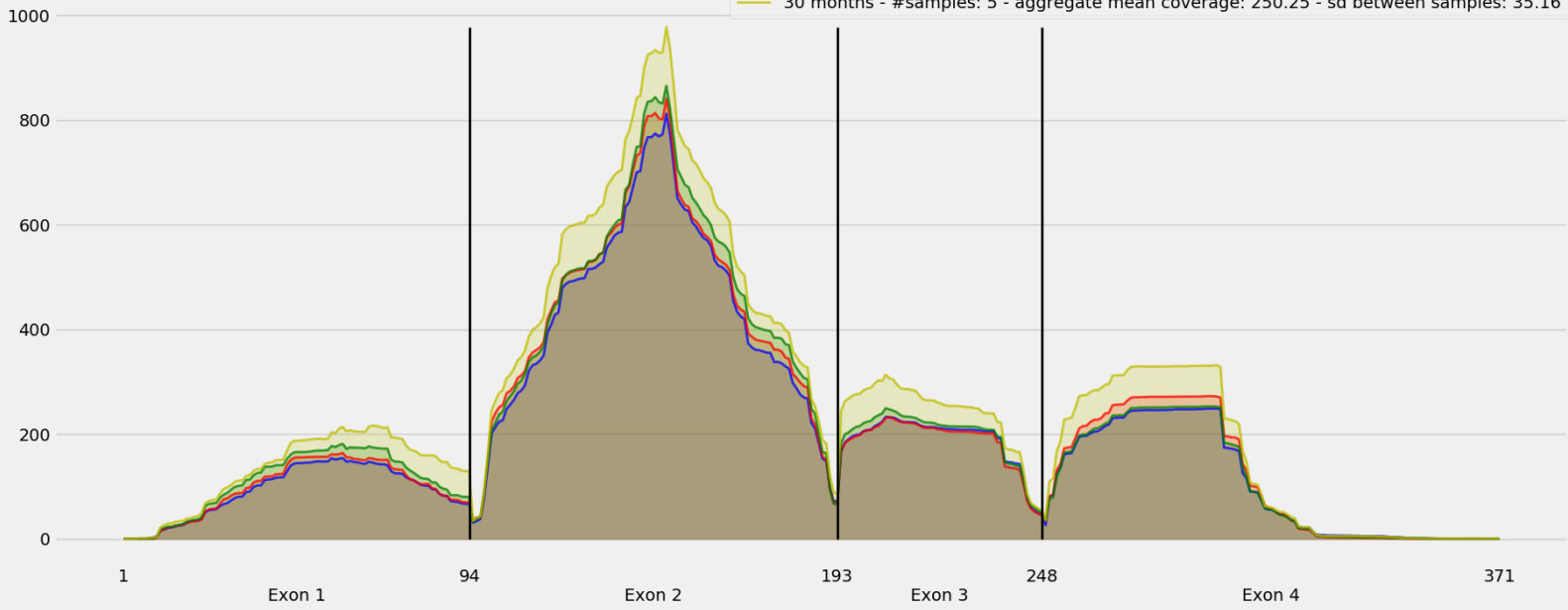
Coverage for chr5:108433244-108434448 - specific regions
Strand: Minus

9 months - #samples: 5 - aggregate mean coverage: 131.72 - sd between samples: 6.73
15 months - #samples: 5 - aggregate mean coverage: 137.63 - sd between samples: 7.18
24 months - #samples: 5 - aggregate mean coverage: 141.32 - sd between samples: 18.04
30 months - #samples: 5 - aggregate mean coverage: 166.15 - sd between samples: 35.16



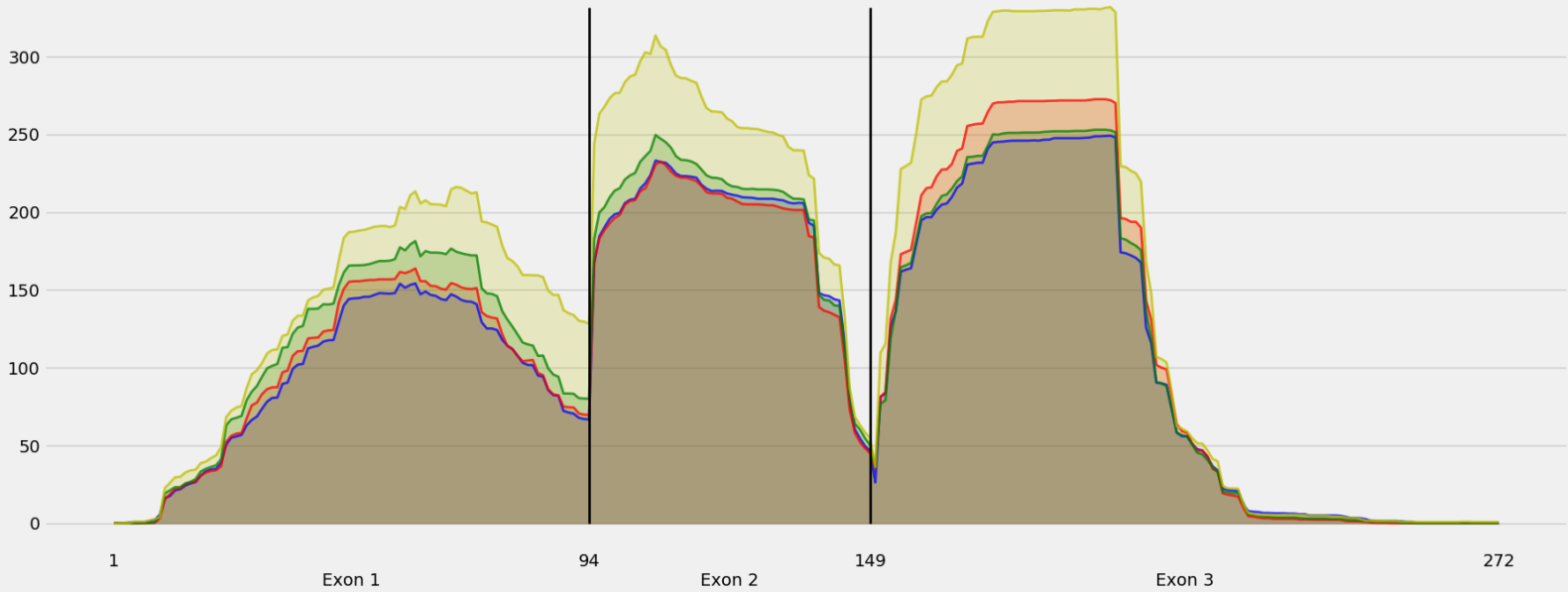
Coverage for chr5:108433244-108434448 - specific regions
Strand: Minus

9 months - #samples: 5 - aggregate mean coverage: 198.61 - sd between samples: 6.73
15 months - #samples: 5 - aggregate mean coverage: 207.15 - sd between samples: 7.18
24 months - #samples: 5 - aggregate mean coverage: 212.55 - sd between samples: 18.04
30 months - #samples: 5 - aggregate mean coverage: 250.25 - sd between samples: 35.16



Coverage for chr5:108433244-108434448 - specific regions
Strand: Minus

9 months - #samples: 5 - aggregate mean coverage: 114.89 - sd between samples: 6.73
15 months - #samples: 5 - aggregate mean coverage: 119.77 - sd between samples: 7.18
24 months - #samples: 5 - aggregate mean coverage: 122.56 - sd between samples: 18.04
30 months - #samples: 5 - aggregate mean coverage: 153.05 - sd between samples: 35.16



Coverage for chr5:108433244-108434448 - specific regions
Strand: Minus

9 months - #samples: 5 - aggregate mean coverage: 131.72 - sd between samples: 6.73
15 months - #samples: 5 - aggregate mean coverage: 137.63 - sd between samples: 7.18
24 months - #samples: 5 - aggregate mean coverage: 141.32 - sd between samples: 18.04
30 months - #samples: 5 - aggregate mean coverage: 166.15 - sd between samples: 35.16

