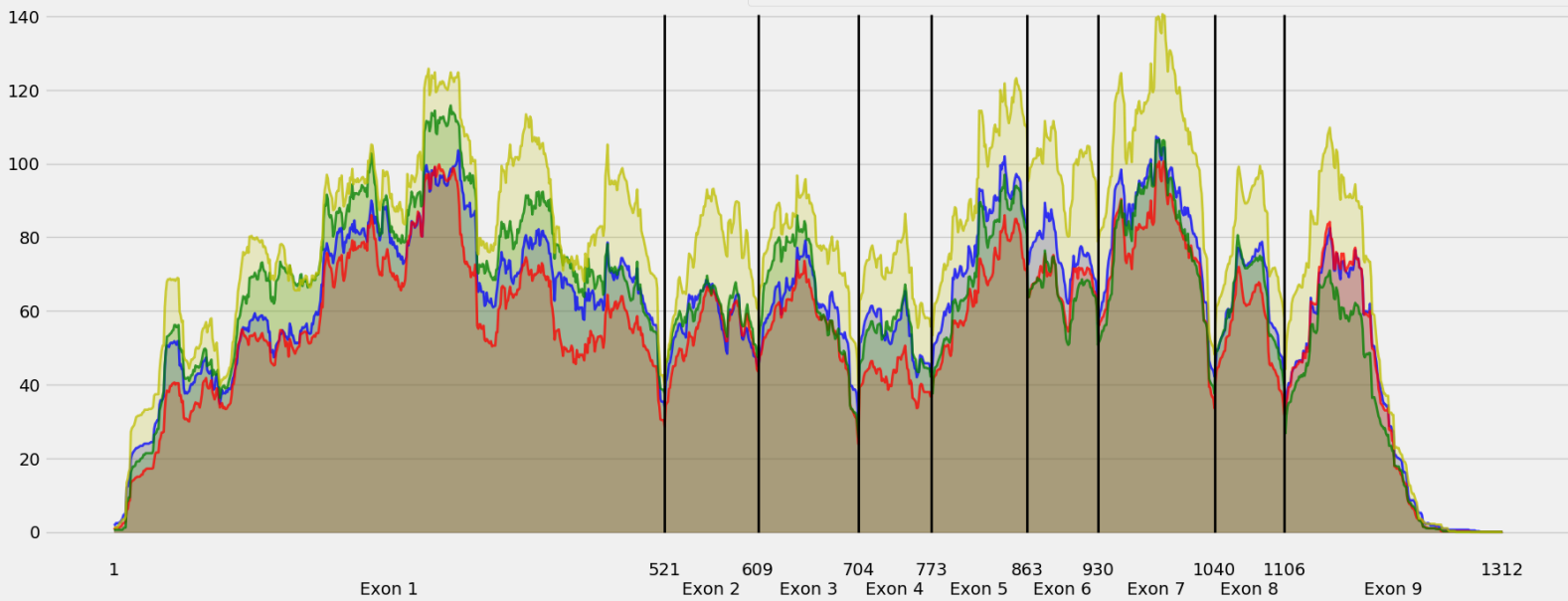


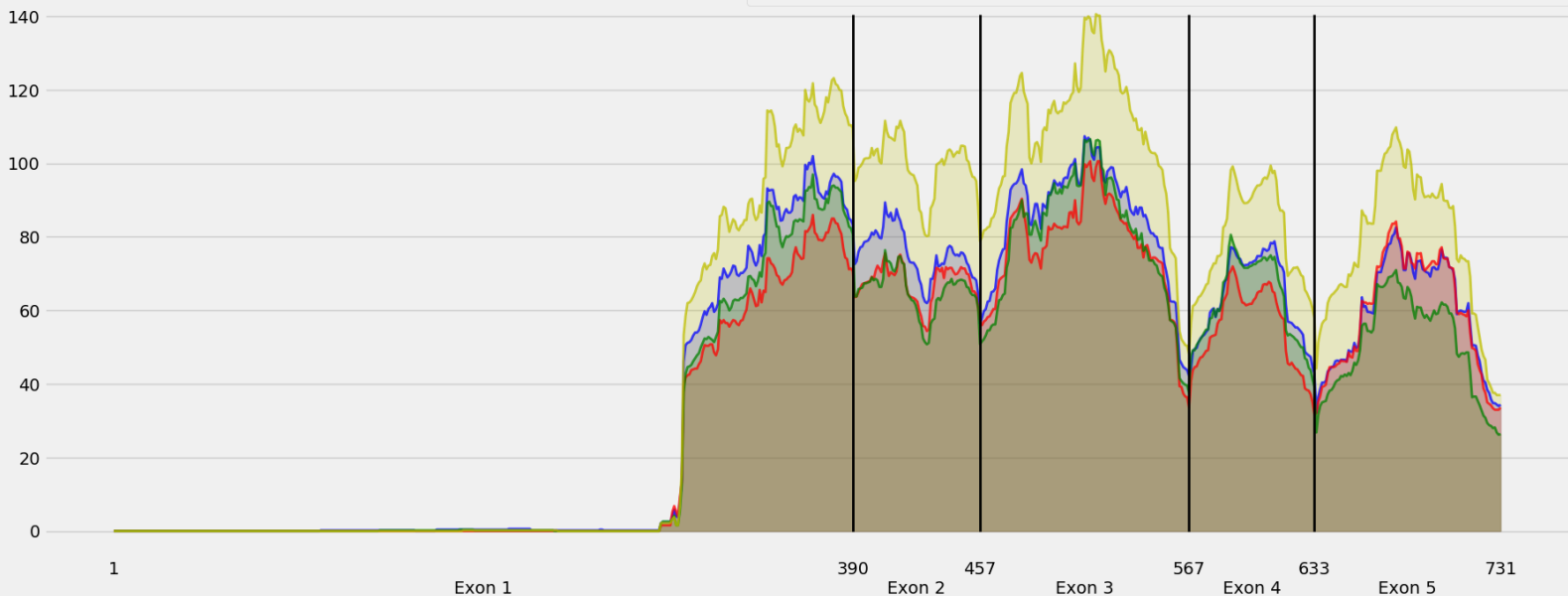
Coverage for chr6:120794305-120822793 - specific regions
Strand: Minus

9 months - #samples: 5 - aggregate mean coverage: 60.42 - sd between samples: 1.92
15 months - #samples: 5 - aggregate mean coverage: 53.98 - sd between samples: 2.61
24 months - #samples: 5 - aggregate mean coverage: 61.15 - sd between samples: 4.49
30 months - #samples: 5 - aggregate mean coverage: 76.48 - sd between samples: 2.95



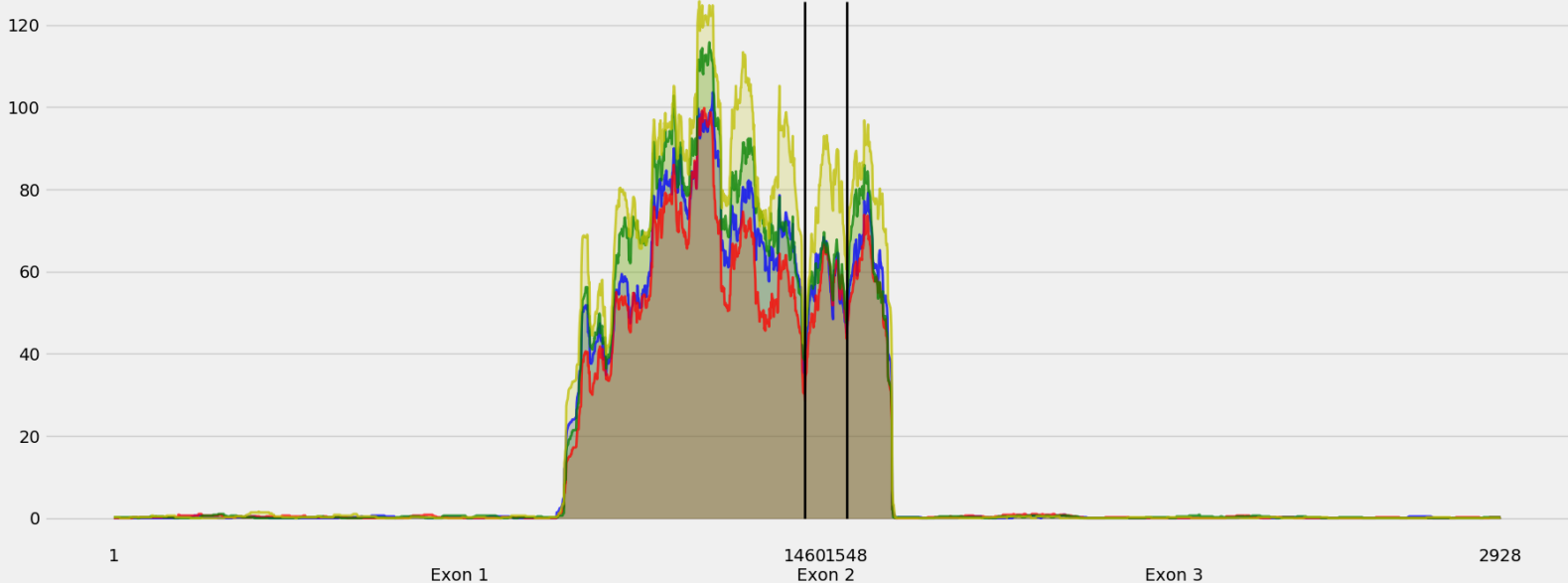
Coverage for chr6:120794305-120822793 - specific regions
Strand: Minus

9 months - #samples: 5 - aggregate mean coverage: 43.20 - sd between samples: 1.92
15 months - #samples: 5 - aggregate mean coverage: 38.81 - sd between samples: 2.61
24 months - #samples: 5 - aggregate mean coverage: 39.42 - sd between samples: 4.49
30 months - #samples: 5 - aggregate mean coverage: 54.77 - sd between samples: 2.95



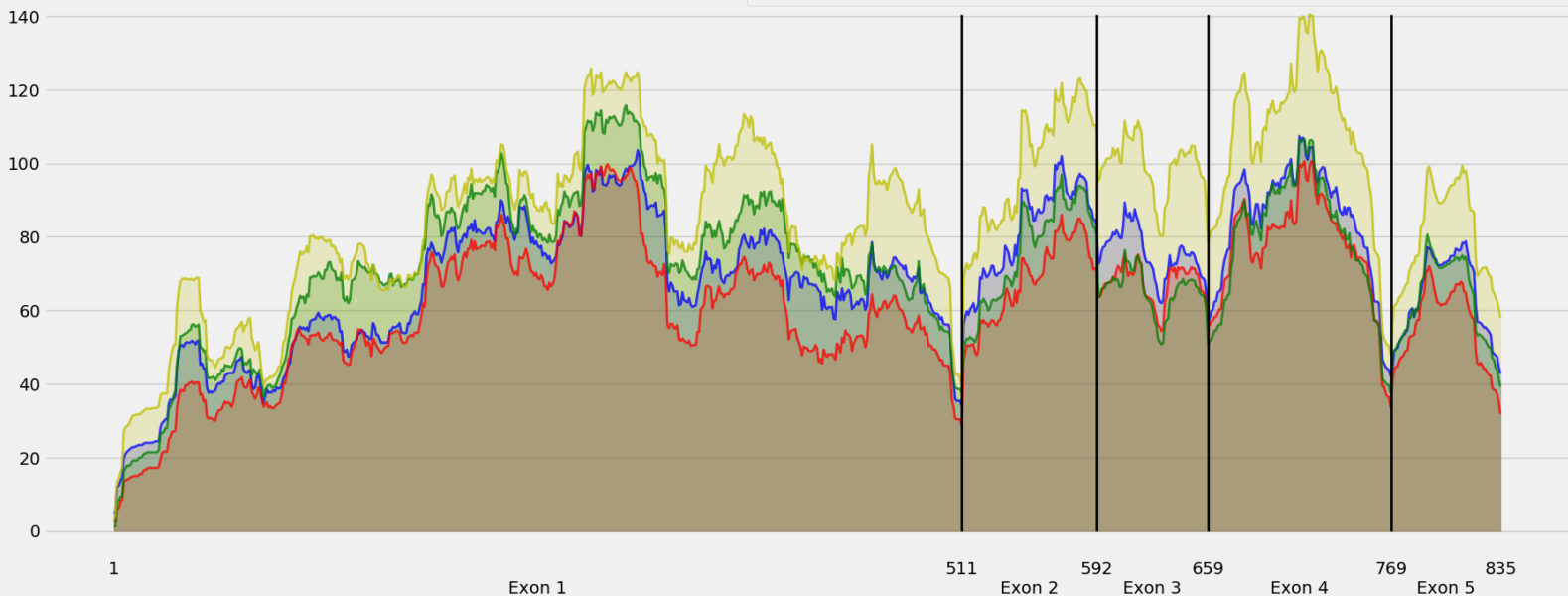
Coverage for chr6:120794305-120822793 - specific regions
Strand: Minus

9 months - #samples: 5 - aggregate mean coverage: 14.97 - sd between samples: 1.92
15 months - #samples: 5 - aggregate mean coverage: 13.54 - sd between samples: 2.61
24 months - #samples: 5 - aggregate mean coverage: 16.35 - sd between samples: 4.49
30 months - #samples: 5 - aggregate mean coverage: 18.90 - sd between samples: 2.95



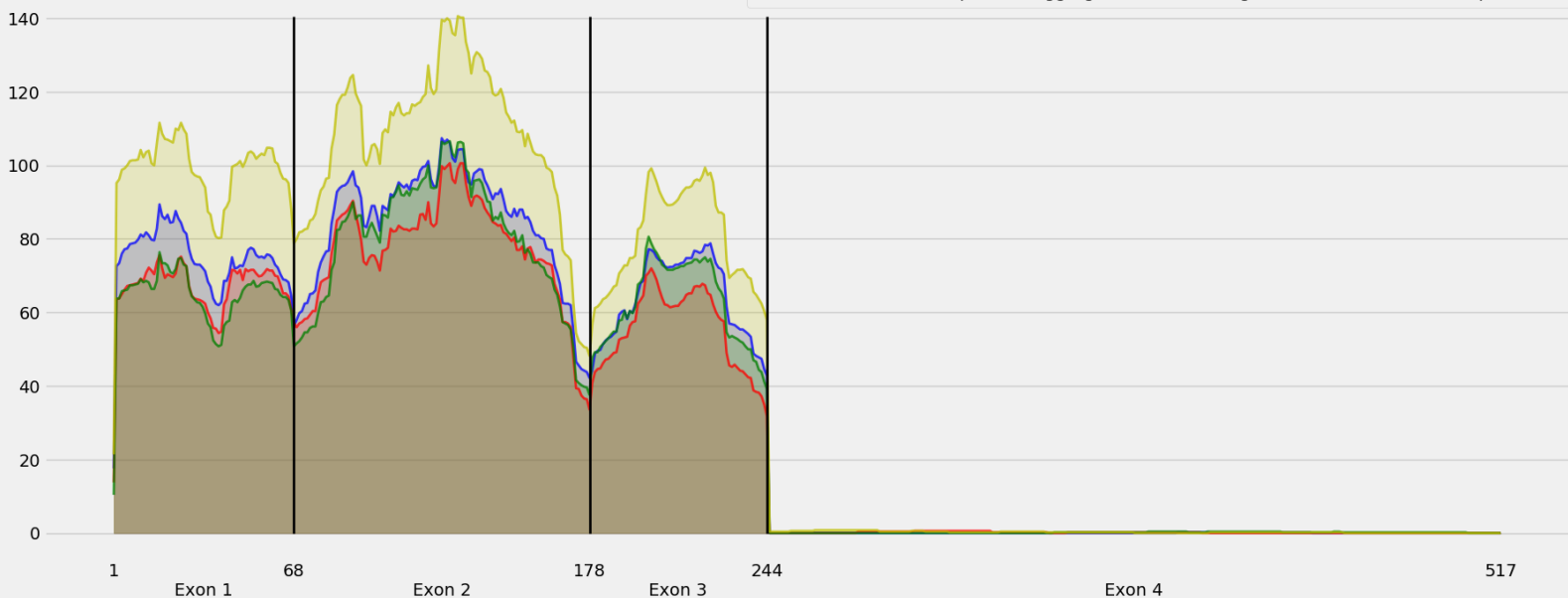
Coverage for chr6:120794305-120822793 - specific regions
Strand: Minus

9 months - #samples: 5 - aggregate mean coverage: 69.36 - sd between samples: 1.92
15 months - #samples: 5 - aggregate mean coverage: 61.31 - sd between samples: 2.61
24 months - #samples: 5 - aggregate mean coverage: 71.27 - sd between samples: 4.49
30 months - #samples: 5 - aggregate mean coverage: 87.05 - sd between samples: 2.95



Coverage for chr6:120794305-120822793 - specific regions
Strand: Minus

9 months - #samples: 5 - aggregate mean coverage: 36.01 - sd between samples: 1.92
15 months - #samples: 5 - aggregate mean coverage: 32.25 - sd between samples: 2.61
24 months - #samples: 5 - aggregate mean coverage: 33.47 - sd between samples: 4.49
30 months - #samples: 5 - aggregate mean coverage: 46.11 - sd between samples: 2.95



Coverage for chr6:120794305-120822793 - specific regions
Strand: Minus

9 months - #samples: 5 - aggregate mean coverage: 74.92 - sd between samples: 1.92
15 months - #samples: 5 - aggregate mean coverage: 68.41 - sd between samples: 2.61
24 months - #samples: 5 - aggregate mean coverage: 67.80 - sd between samples: 4.49
30 months - #samples: 5 - aggregate mean coverage: 95.80 - sd between samples: 2.95

