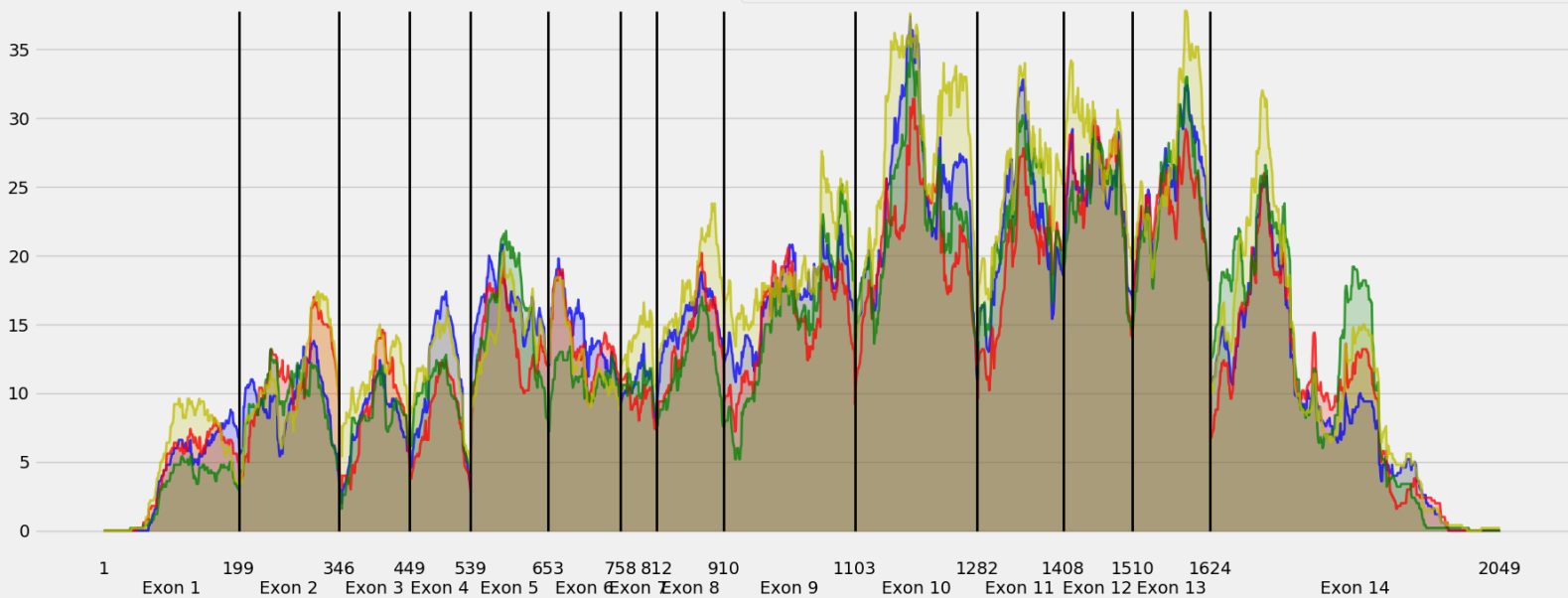


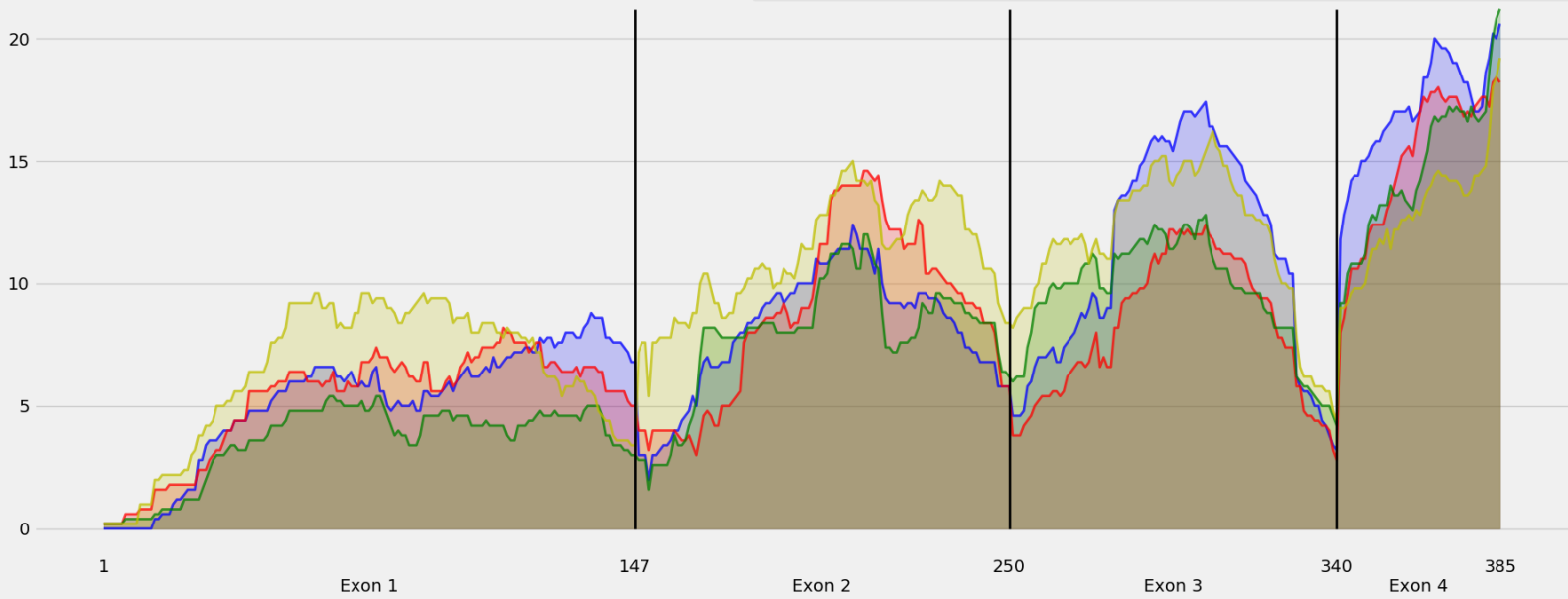
Coverage for chr1:5070018-5162529 - specific regions
Strand: Plus

9 months - #samples: 5 - aggregate mean coverage: 14.06 - sd between samples: 0.06
15 months - #samples: 5 - aggregate mean coverage: 13.18 - sd between samples: 0.10
24 months - #samples: 5 - aggregate mean coverage: 13.44 - sd between samples: 0.16
30 months - #samples: 5 - aggregate mean coverage: 15.77 - sd between samples: 0.12



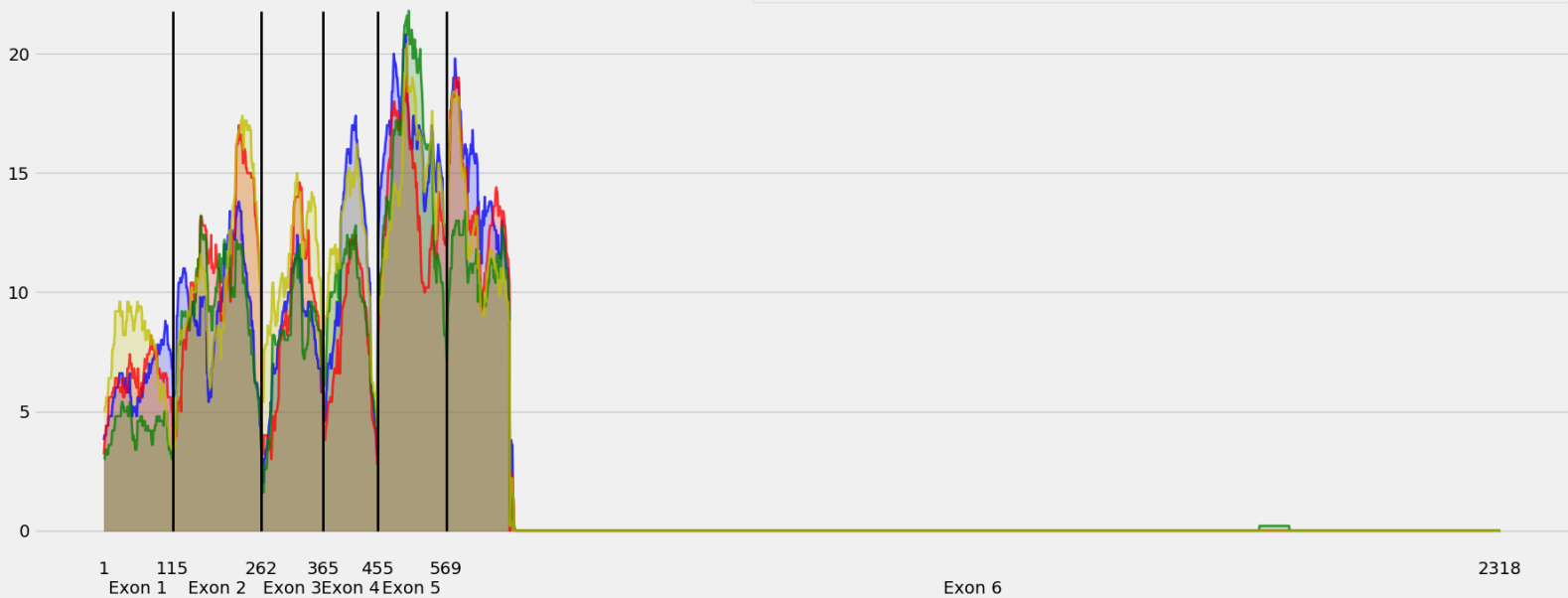
Coverage for chr1:5070018-5162529 - specific regions
Strand: Plus

— 9 months - #samples: 5 - aggregate mean coverage: 8.71 - sd between samples: 0.06
— 15 months - #samples: 5 - aggregate mean coverage: 7.97 - sd between samples: 0.10
— 24 months - #samples: 5 - aggregate mean coverage: 7.42 - sd between samples: 0.16
— 30 months - #samples: 5 - aggregate mean coverage: 9.62 - sd between samples: 0.12



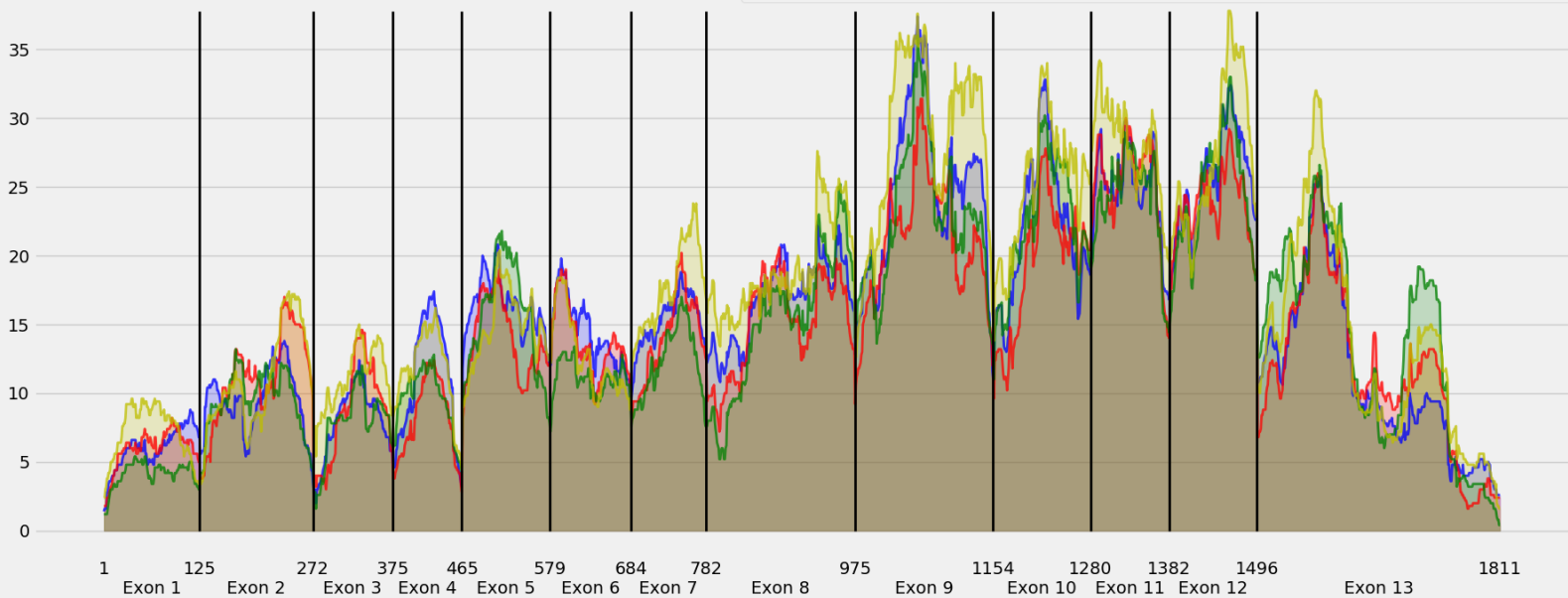
Coverage for chr1:5070018-5162529 - specific regions
Strand: Plus

- 9 months - #samples: 5 - aggregate mean coverage: 3.17 - sd between samples: 0.06
- 15 months - #samples: 5 - aggregate mean coverage: 3.04 - sd between samples: 0.10
- 24 months - #samples: 5 - aggregate mean coverage: 2.81 - sd between samples: 0.16
- 30 months - #samples: 5 - aggregate mean coverage: 3.32 - sd between samples: 0.12



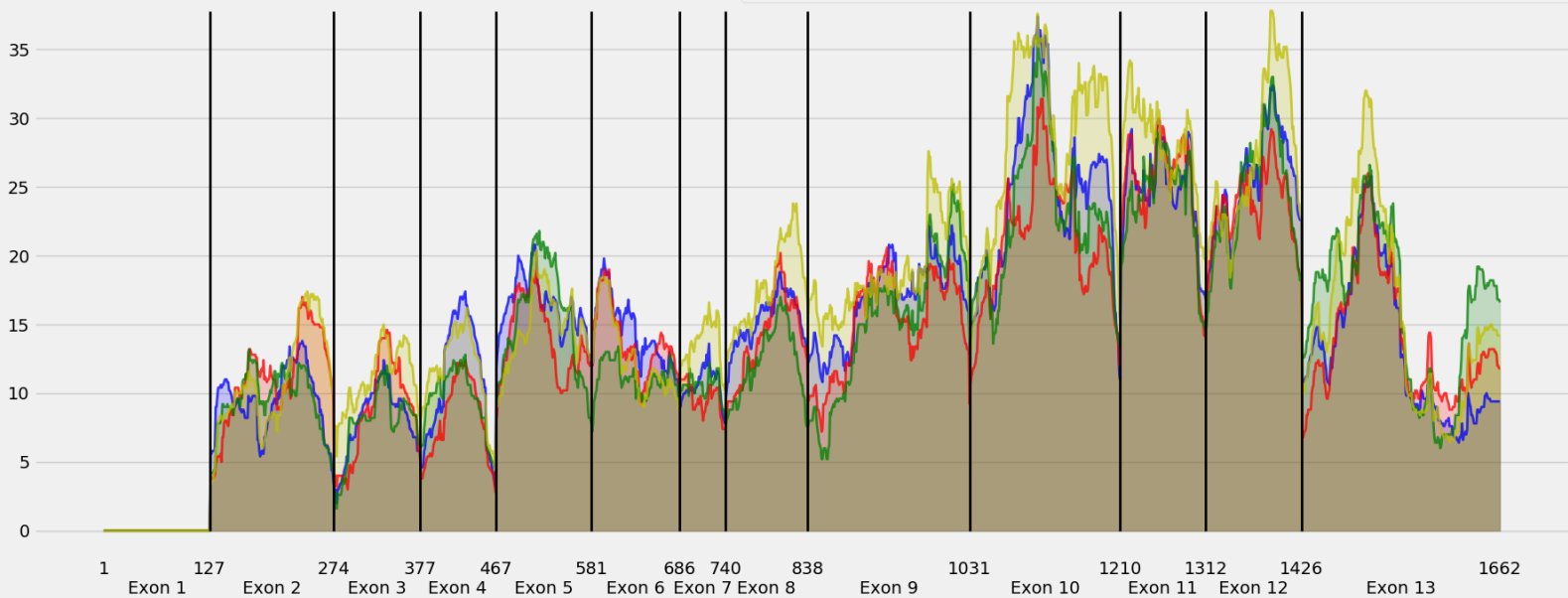
Coverage for chr1:5070018-5162529 - specific regions
Strand: Plus

9 months - #samples: 5 - aggregate mean coverage: 15.56 - sd between samples: 0.06
15 months - #samples: 5 - aggregate mean coverage: 14.57 - sd between samples: 0.10
24 months - #samples: 5 - aggregate mean coverage: 14.88 - sd between samples: 0.16
30 months - #samples: 5 - aggregate mean coverage: 17.39 - sd between samples: 0.12



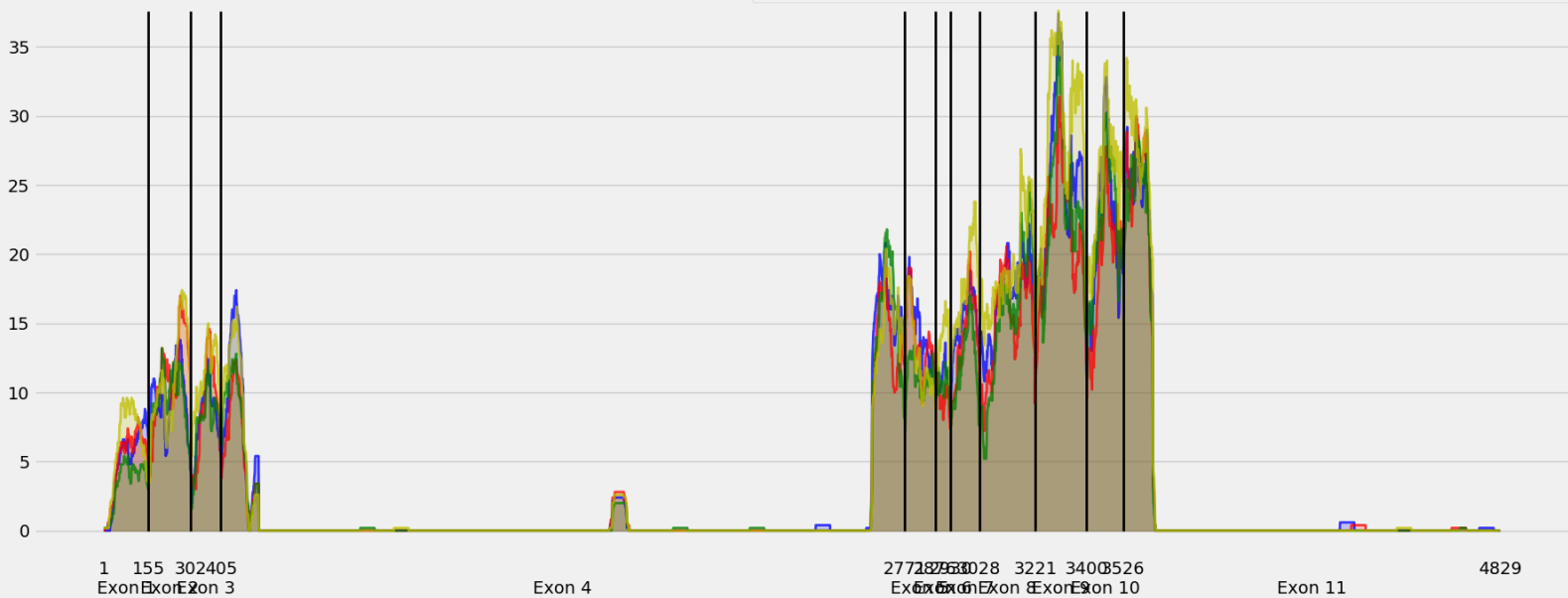
Coverage for chr1:5070018-5162529 - specific regions
Strand: Plus

9 months - #samples: 5 - aggregate mean coverage: 14.96 - sd between samples: 0.06
15 months - #samples: 5 - aggregate mean coverage: 14.08 - sd between samples: 0.10
24 months - #samples: 5 - aggregate mean coverage: 14.35 - sd between samples: 0.16
30 months - #samples: 5 - aggregate mean coverage: 16.66 - sd between samples: 0.12



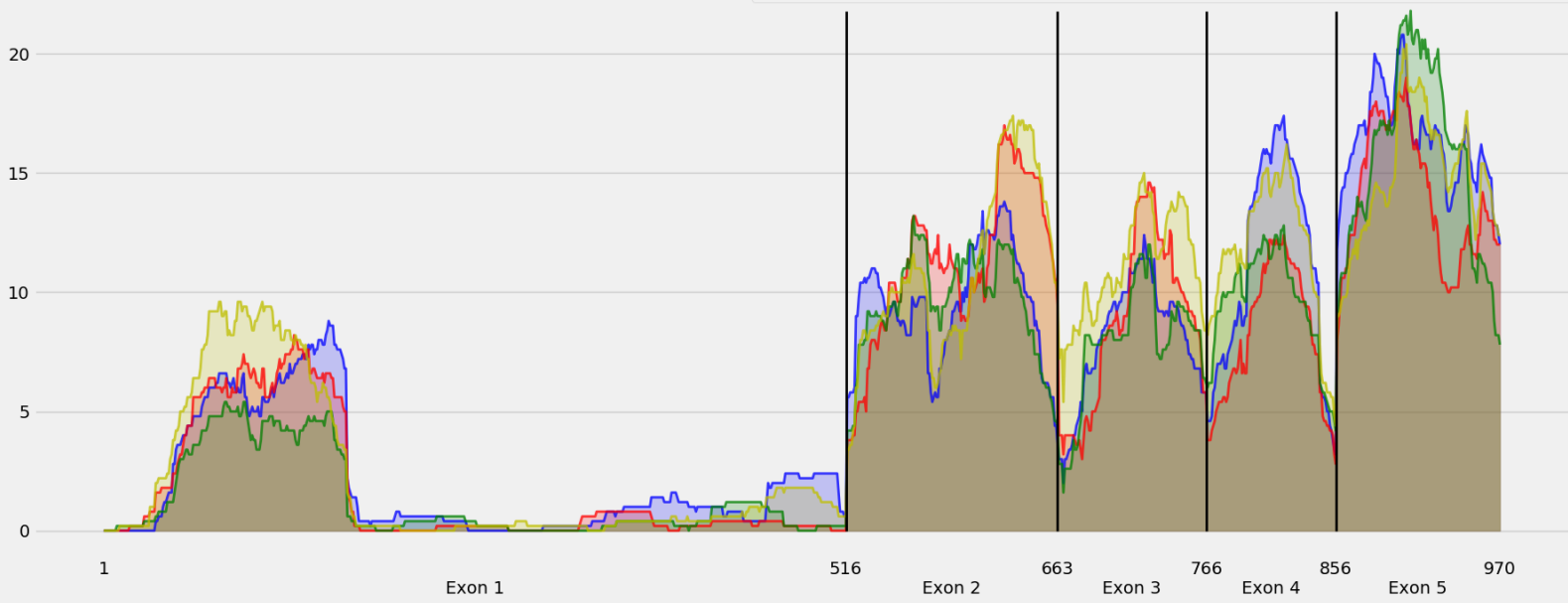
Coverage for chr1:5070018-5162529 - specific regions
Strand: Plus

— 9 months - #samples: 5 - aggregate mean coverage: 4.71 - sd between samples: 0.06
— 15 months - #samples: 5 - aggregate mean coverage: 4.34 - sd between samples: 0.10
— 24 months - #samples: 5 - aggregate mean coverage: 4.31 - sd between samples: 0.16
— 30 months - #samples: 5 - aggregate mean coverage: 5.23 - sd between samples: 0.12



Coverage for chr1:5070018-5162529 - specific regions
Strand: Plus

9 months - #samples: 5 - aggregate mean coverage: 6.31 - sd between samples: 0.06
15 months - #samples: 5 - aggregate mean coverage: 5.89 - sd between samples: 0.10
24 months - #samples: 5 - aggregate mean coverage: 5.66 - sd between samples: 0.16
30 months - #samples: 5 - aggregate mean coverage: 6.80 - sd between samples: 0.12



Coverage for chr1:5070018-5162529 - specific regions
Strand: Plus

- 9 months - #samples: 5 - aggregate mean coverage: 0.91 - sd between samples: 0.06
- 15 months - #samples: 5 - aggregate mean coverage: 1.00 - sd between samples: 0.10
- 24 months - #samples: 5 - aggregate mean coverage: 0.80 - sd between samples: 0.16
- 30 months - #samples: 5 - aggregate mean coverage: 1.05 - sd between samples: 0.12

