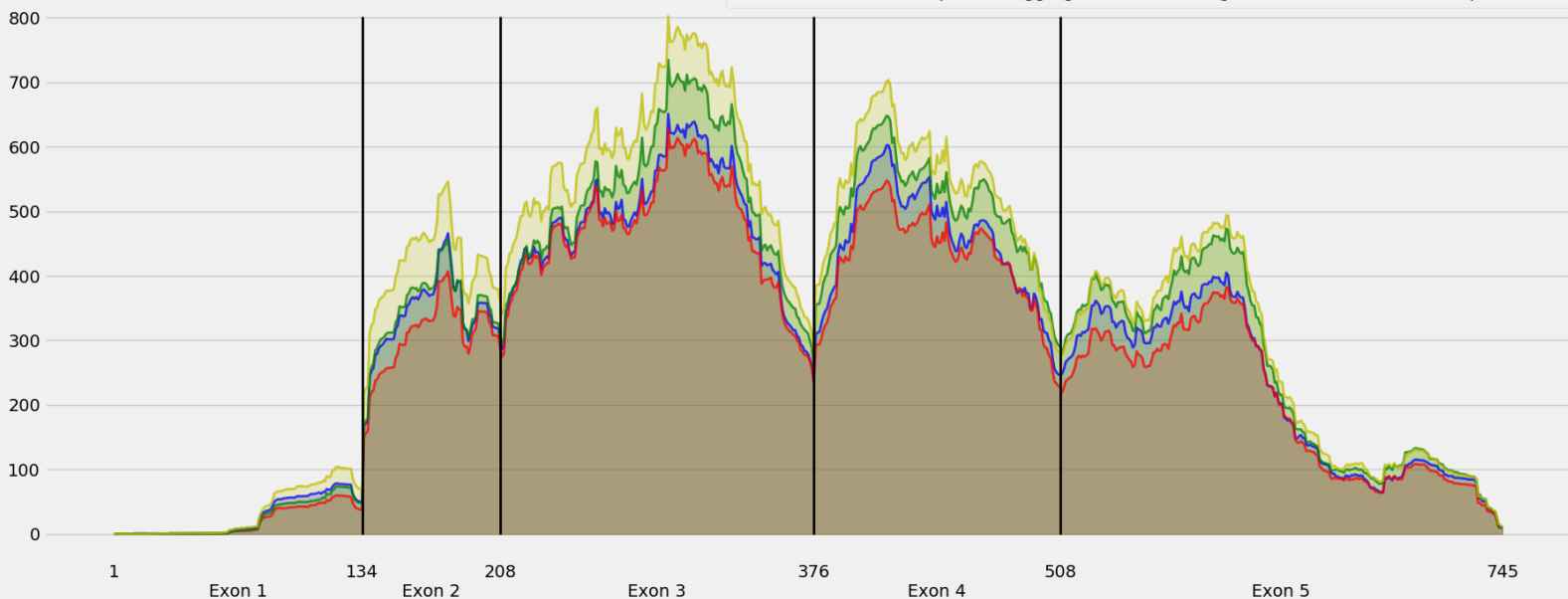


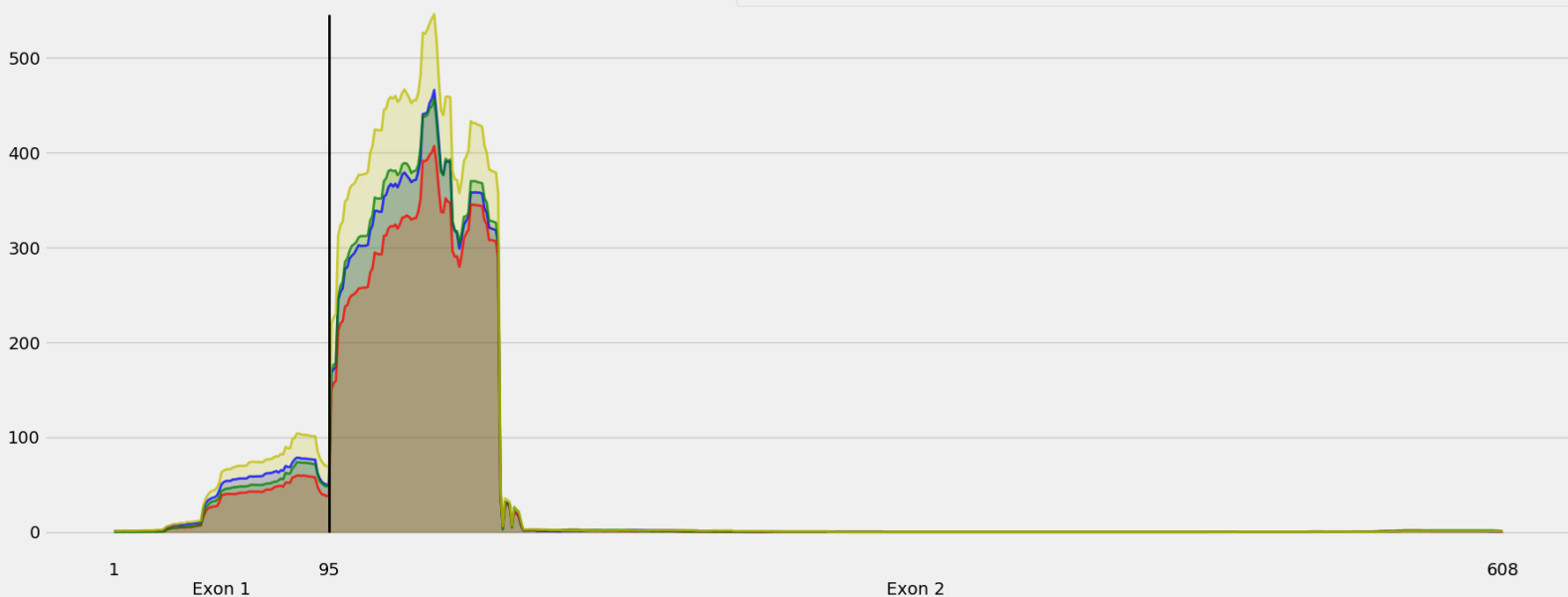
Coverage for chr8:120668222-120674207 - specific regions  
Strand: Plus

9 months - #samples: 5 - aggregate mean coverage: 294.56 - sd between samples: 6.22  
15 months - #samples: 5 - aggregate mean coverage: 276.51 - sd between samples: 4.44  
24 months - #samples: 5 - aggregate mean coverage: 320.70 - sd between samples: 6.72  
30 months - #samples: 5 - aggregate mean coverage: 351.45 - sd between samples: 10.55



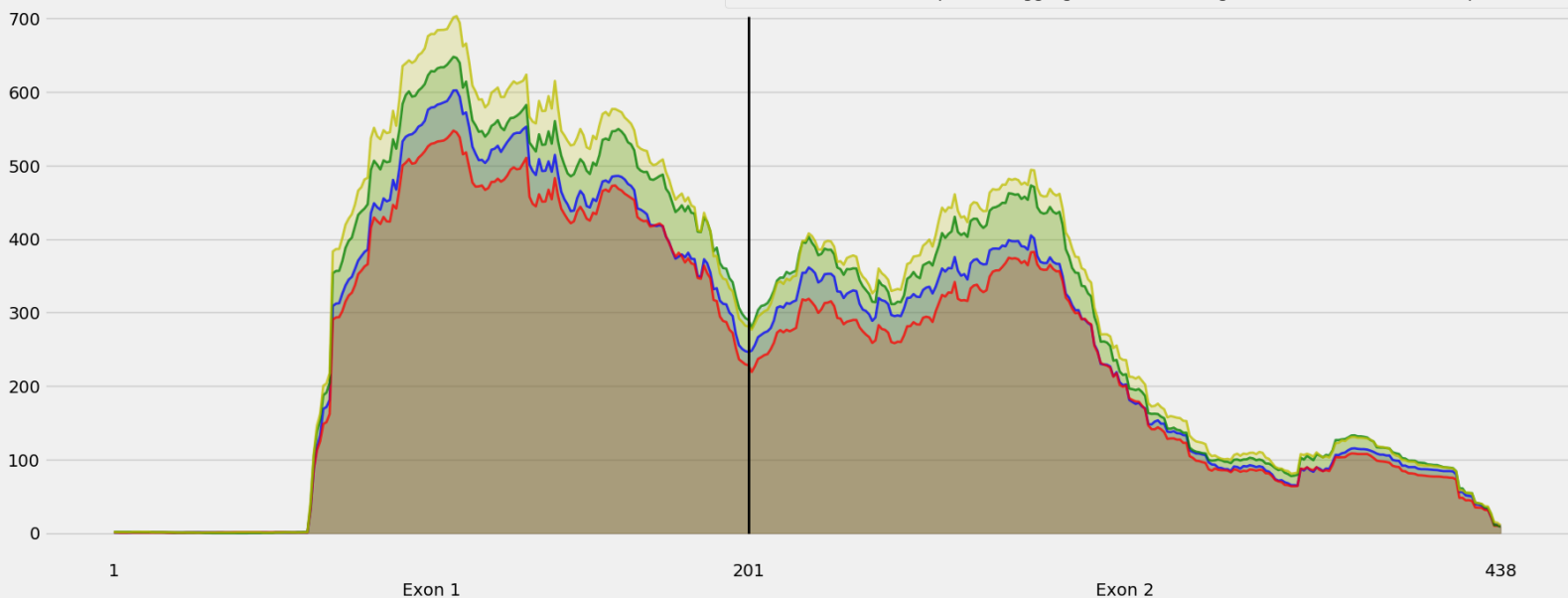
Coverage for chr8:120668222-120674207 - specific regions  
Strand: Plus

9 months - #samples: 5 - aggregate mean coverage: 47.83 - sd between samples: 6.22  
15 months - #samples: 5 - aggregate mean coverage: 42.10 - sd between samples: 4.44  
24 months - #samples: 5 - aggregate mean coverage: 48.04 - sd between samples: 6.72  
30 months - #samples: 5 - aggregate mean coverage: 58.58 - sd between samples: 10.55



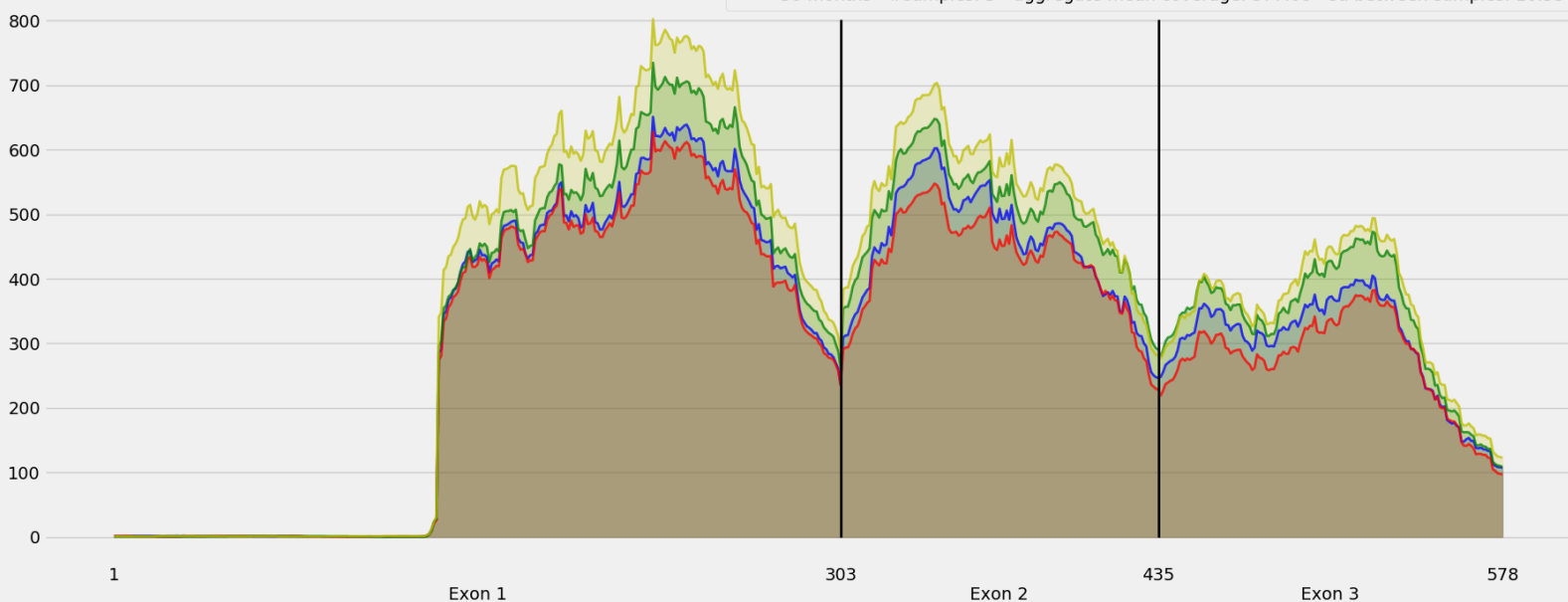
Coverage for chr8:120668222-120674207 - specific regions  
Strand: Plus

9 months - #samples: 5 - aggregate mean coverage: 253.10 - sd between samples: 6.22  
15 months - #samples: 5 - aggregate mean coverage: 236.29 - sd between samples: 4.44  
24 months - #samples: 5 - aggregate mean coverage: 282.27 - sd between samples: 6.72  
30 months - #samples: 5 - aggregate mean coverage: 297.47 - sd between samples: 10.55



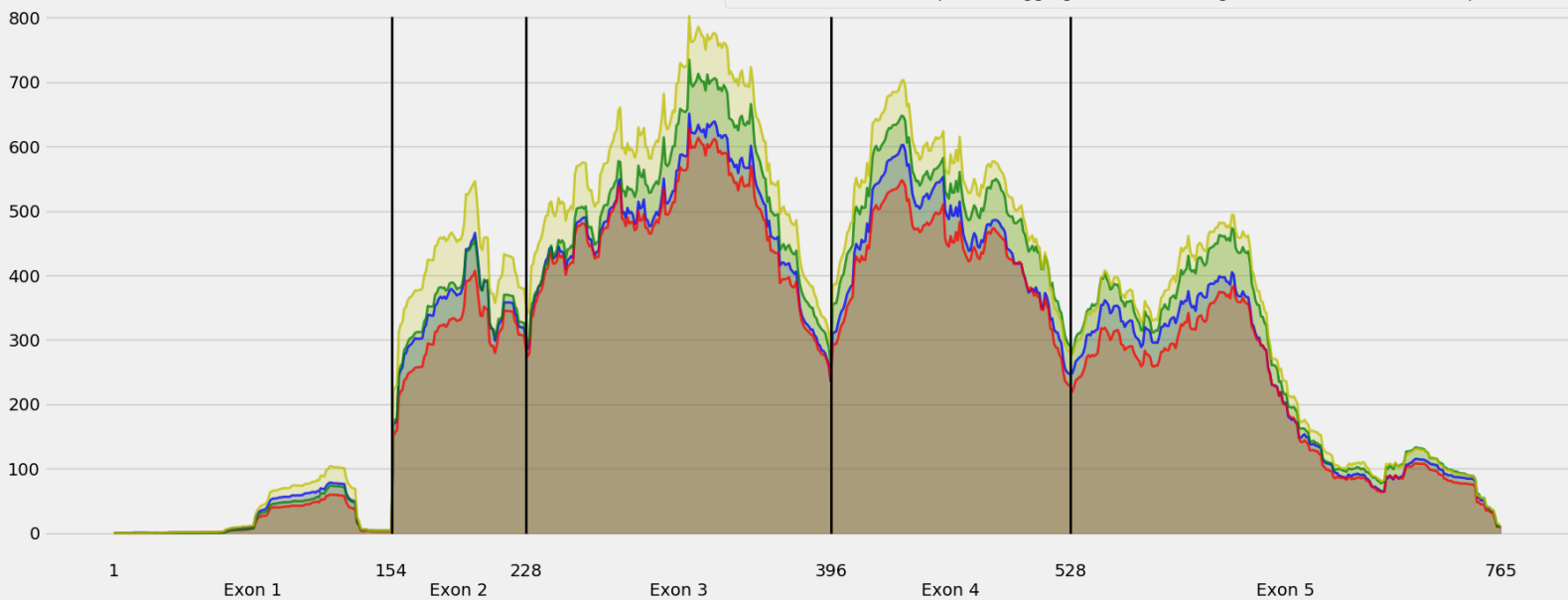
Coverage for chr8:120668222-120674207 - specific regions  
Strand: Plus

9 months - #samples: 5 - aggregate mean coverage: 316.81 - sd between samples: 6.22  
15 months - #samples: 5 - aggregate mean coverage: 300.36 - sd between samples: 4.44  
24 months - #samples: 5 - aggregate mean coverage: 348.67 - sd between samples: 6.72  
30 months - #samples: 5 - aggregate mean coverage: 377.08 - sd between samples: 10.55



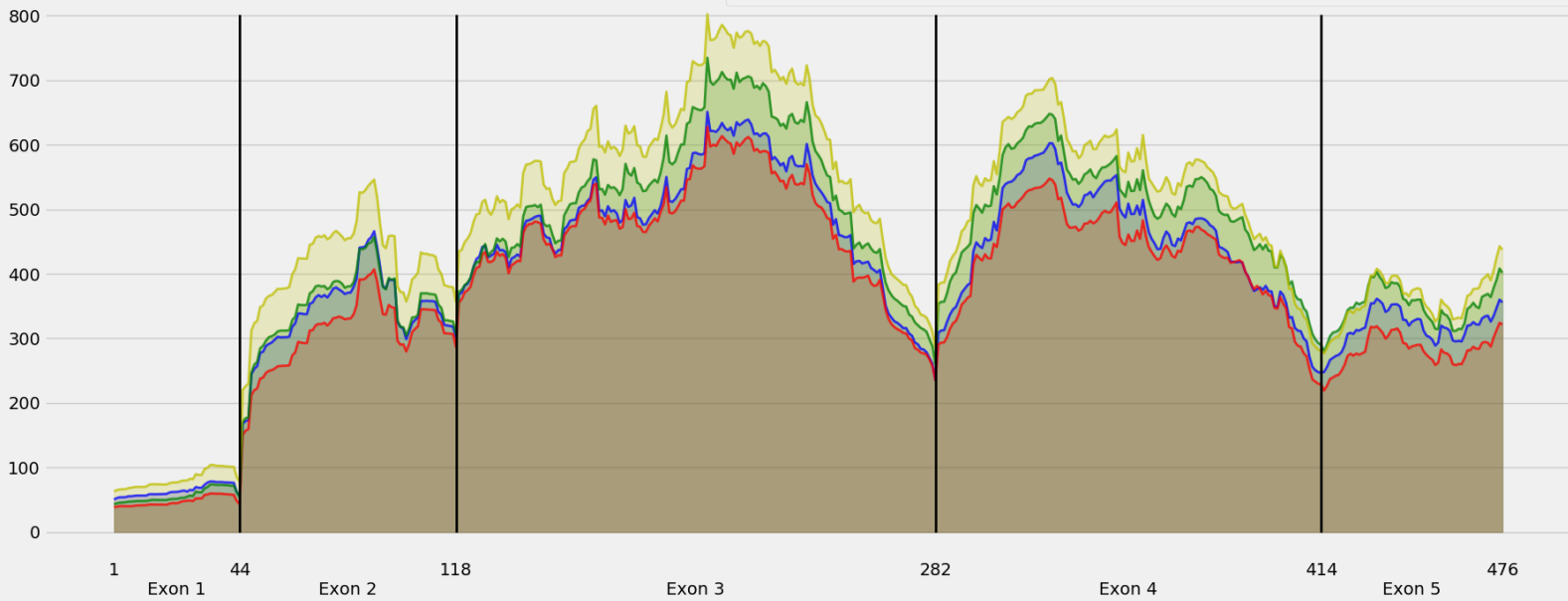
Coverage for chr8:120668222-120674207 - specific regions  
Strand: Plus

9 months - #samples: 5 - aggregate mean coverage: 287.00 - sd between samples: 6.22  
15 months - #samples: 5 - aggregate mean coverage: 269.39 - sd between samples: 4.44  
24 months - #samples: 5 - aggregate mean coverage: 312.46 - sd between samples: 6.72  
30 months - #samples: 5 - aggregate mean coverage: 342.42 - sd between samples: 10.55



Coverage for chr8:120668222-120674207 - specific regions  
Strand: Plus

9 months - #samples: 5 - aggregate mean coverage: 393.17 - sd between samples: 6.22  
15 months - #samples: 5 - aggregate mean coverage: 368.74 - sd between samples: 4.44  
24 months - #samples: 5 - aggregate mean coverage: 425.61 - sd between samples: 6.72  
30 months - #samples: 5 - aggregate mean coverage: 469.05 - sd between samples: 10.55



Coverage for chr8:120668222-120674207 - specific regions  
Strand: Plus

9 months - #samples: 5 - aggregate mean coverage: 313.86 - sd between samples: 6.22  
15 months - #samples: 5 - aggregate mean coverage: 294.54 - sd between samples: 4.44  
24 months - #samples: 5 - aggregate mean coverage: 340.74 - sd between samples: 6.72  
30 months - #samples: 5 - aggregate mean coverage: 374.50 - sd between samples: 10.55

