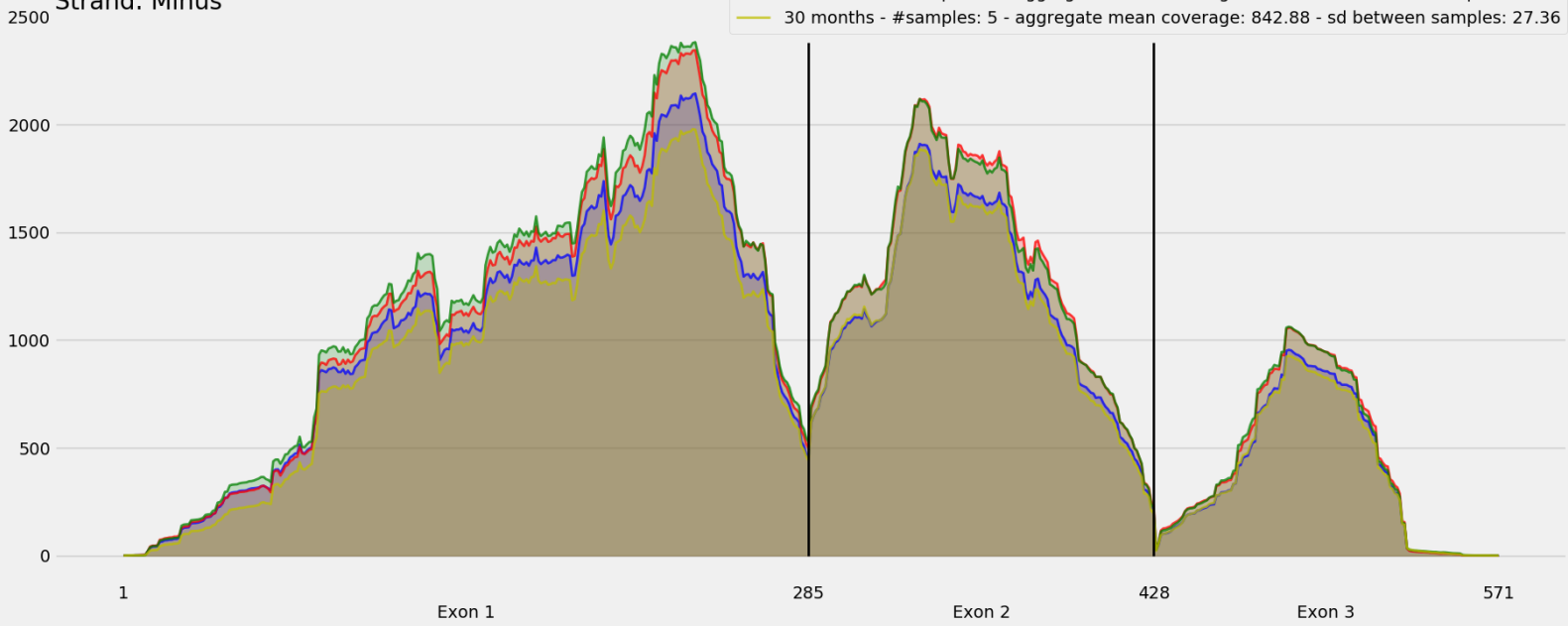


Coverage for chr5:115345642-115348981 - specific regions
Strand: Minus

9 months - #samples: 5 - aggregate mean coverage: 893.33 - sd between samples: 16.92
15 months - #samples: 5 - aggregate mean coverage: 978.11 - sd between samples: 27.93
24 months - #samples: 5 - aggregate mean coverage: 996.39 - sd between samples: 82.59
30 months - #samples: 5 - aggregate mean coverage: 842.88 - sd between samples: 27.36



Coverage for chr5:115345642-115348981 - specific regions
Strand: Minus

9 months - #samples: 5 - aggregate mean coverage: 797.99 - sd between samples: 16.92
15 months - #samples: 5 - aggregate mean coverage: 873.97 - sd between samples: 27.93
24 months - #samples: 5 - aggregate mean coverage: 891.33 - sd between samples: 82.59
30 months - #samples: 5 - aggregate mean coverage: 752.61 - sd between samples: 27.36

