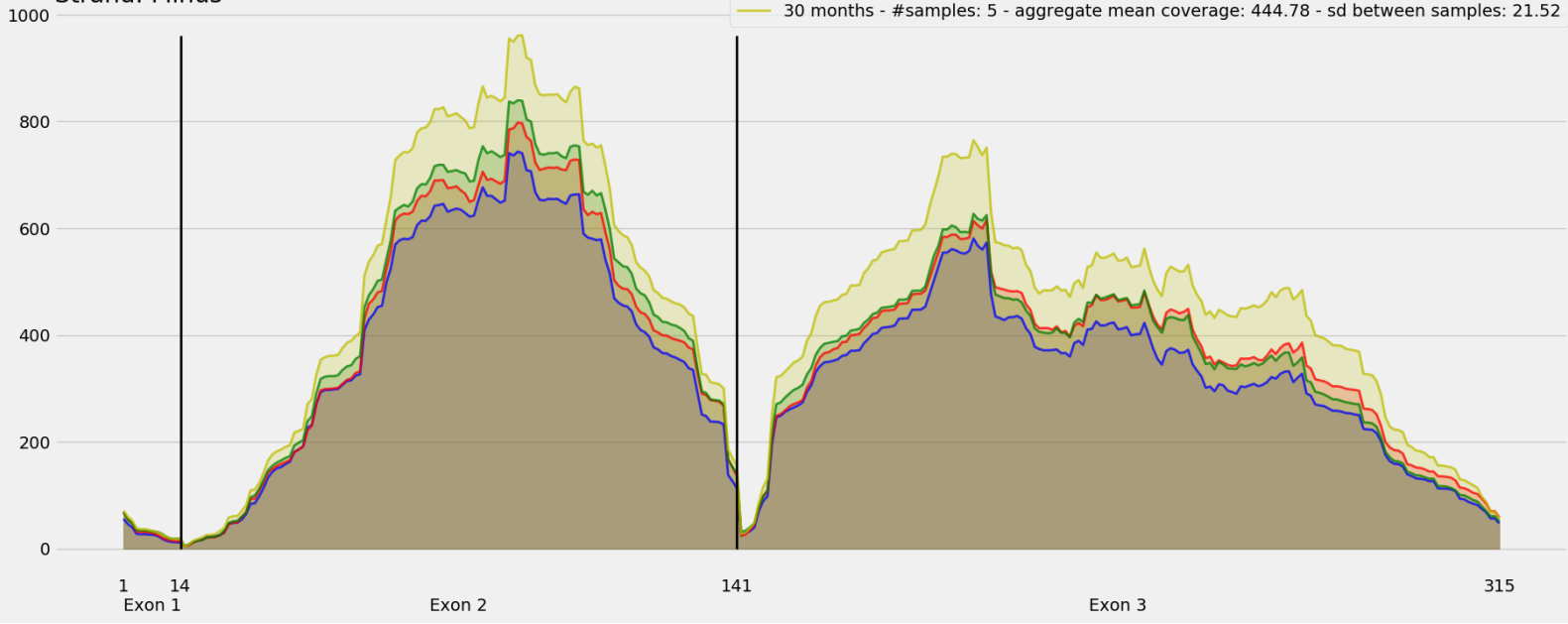


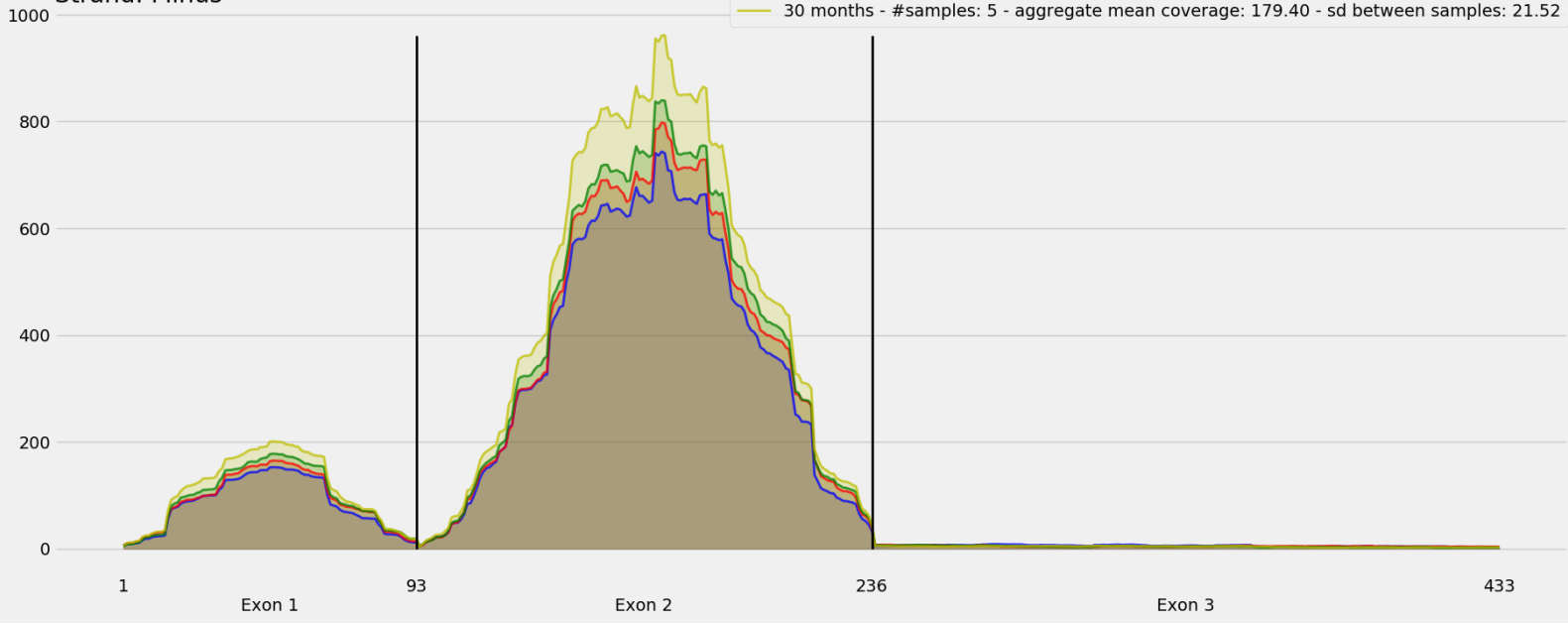
Coverage for chr13:86044816-86046904 - specific regions  
Strand: Minus

9 months - #samples: 5 - aggregate mean coverage: 336.59 - sd between samples: 8.74  
15 months - #samples: 5 - aggregate mean coverage: 368.09 - sd between samples: 5.74  
24 months - #samples: 5 - aggregate mean coverage: 375.00 - sd between samples: 13.40  
30 months - #samples: 5 - aggregate mean coverage: 444.78 - sd between samples: 21.52



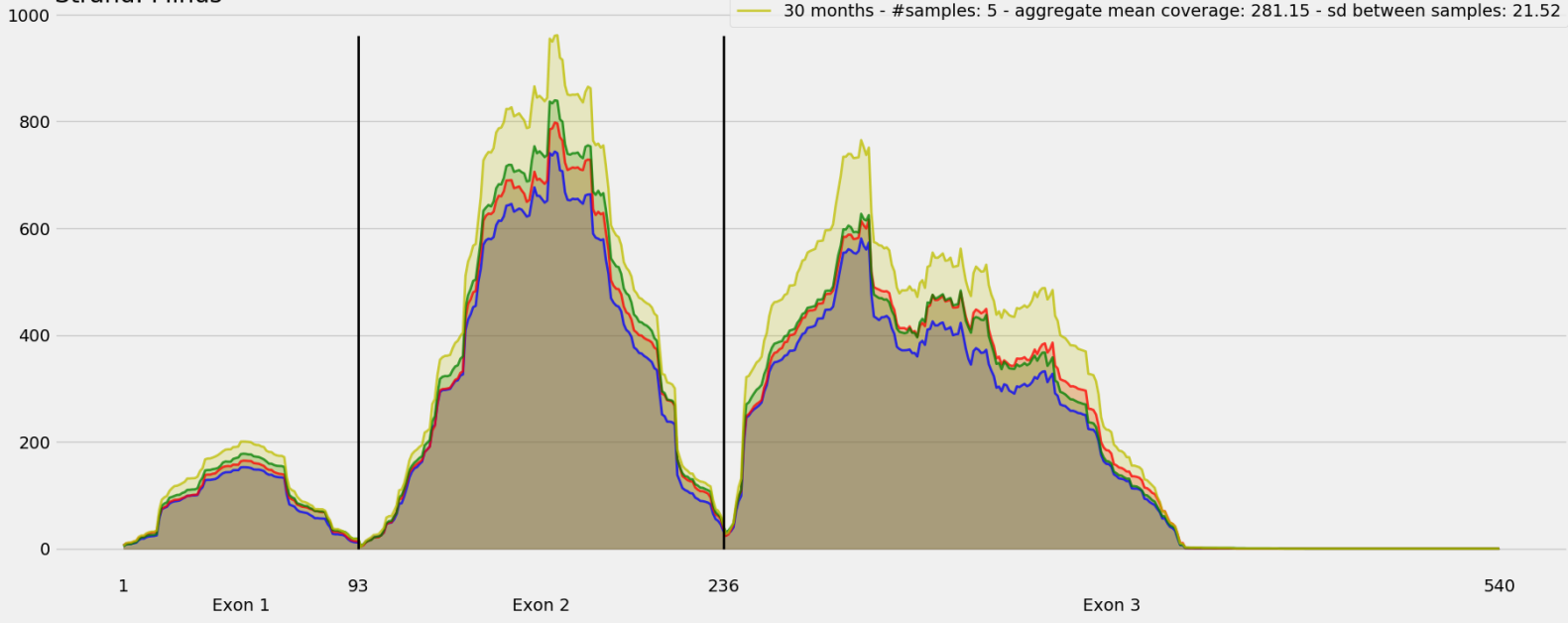
Coverage for chr13:86044816-86046904 - specific regions  
Strand: Minus

9 months - #samples: 5 - aggregate mean coverage: 140.64 - sd between samples: 8.74  
15 months - #samples: 5 - aggregate mean coverage: 150.74 - sd between samples: 5.74  
24 months - #samples: 5 - aggregate mean coverage: 158.45 - sd between samples: 13.40  
30 months - #samples: 5 - aggregate mean coverage: 179.40 - sd between samples: 21.52



Coverage for chr13:86044816-86046904 - specific regions  
Strand: Minus

9 months - #samples: 5 - aggregate mean coverage: 212.80 - sd between samples: 8.74  
15 months - #samples: 5 - aggregate mean coverage: 232.76 - sd between samples: 5.74  
24 months - #samples: 5 - aggregate mean coverage: 237.92 - sd between samples: 13.40  
30 months - #samples: 5 - aggregate mean coverage: 281.15 - sd between samples: 21.52



Coverage for chr13:86044816-86046904 - specific region  
Strand: Minus

9 months - #samples: 5 - aggregate mean coverage: 88.46 - sd between samples: 8.74  
15 months - #samples: 5 - aggregate mean coverage: 94.83 - sd between samples: 5.74  
24 months - #samples: 5 - aggregate mean coverage: 98.76 - sd between samples: 13.40  
30 months - #samples: 5 - aggregate mean coverage: 111.12 - sd between samples: 21.52

