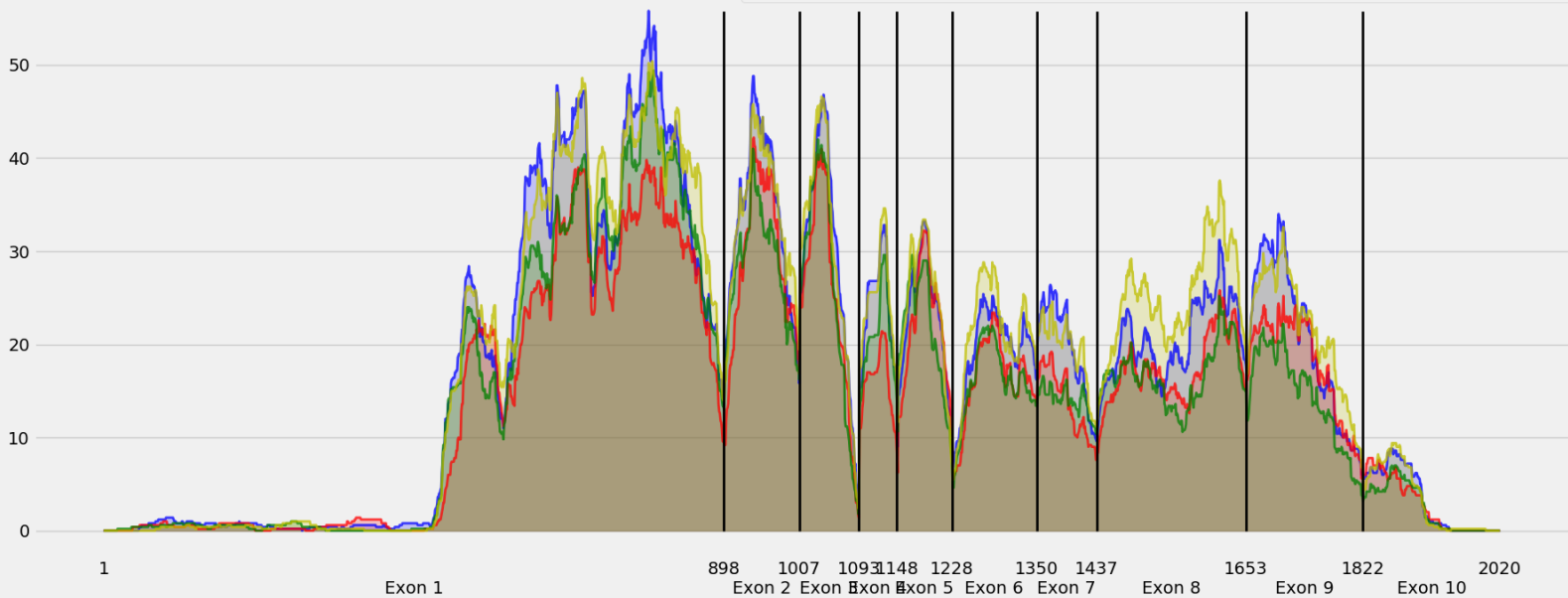


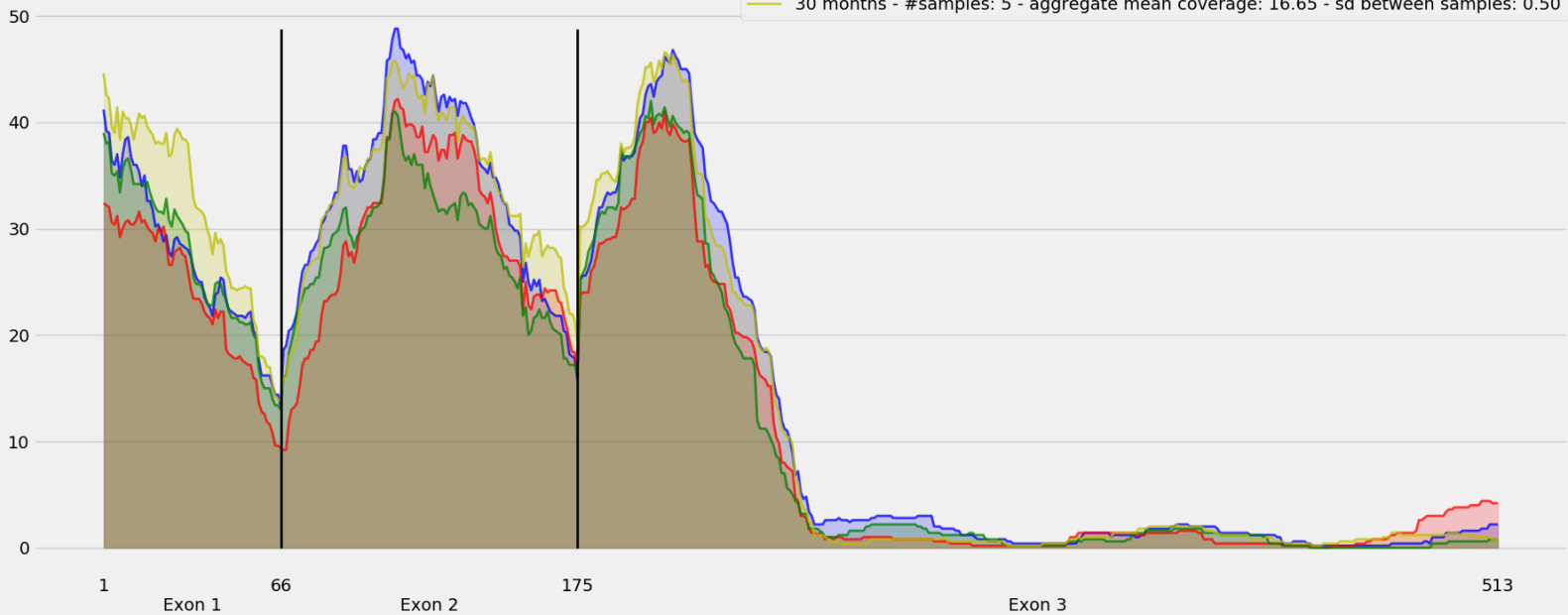
Coverage for chr1:92439010-92473860 - specific regions
Strand: Minus

9 months - #samples: 5 - aggregate mean coverage: 17.63 - sd between samples: 0.23
15 months - #samples: 5 - aggregate mean coverage: 14.39 - sd between samples: 0.33
24 months - #samples: 5 - aggregate mean coverage: 14.75 - sd between samples: 0.40
30 months - #samples: 5 - aggregate mean coverage: 18.36 - sd between samples: 0.50



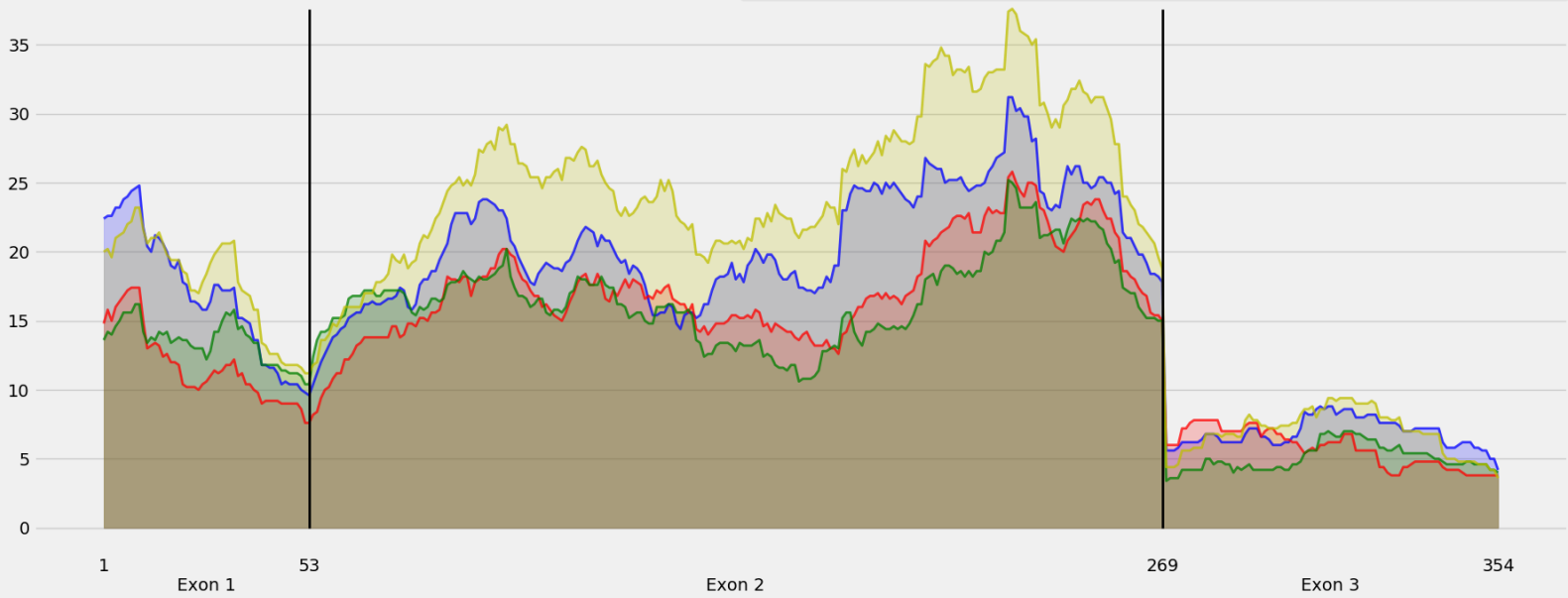
Coverage for chr1:92439010-92473860 - specific regions
Strand: Minus

9 months - #samples: 5 - aggregate mean coverage: 16.21 - sd between samples: 0.23
15 months - #samples: 5 - aggregate mean coverage: 13.89 - sd between samples: 0.33
24 months - #samples: 5 - aggregate mean coverage: 14.18 - sd between samples: 0.40
30 months - #samples: 5 - aggregate mean coverage: 16.65 - sd between samples: 0.50



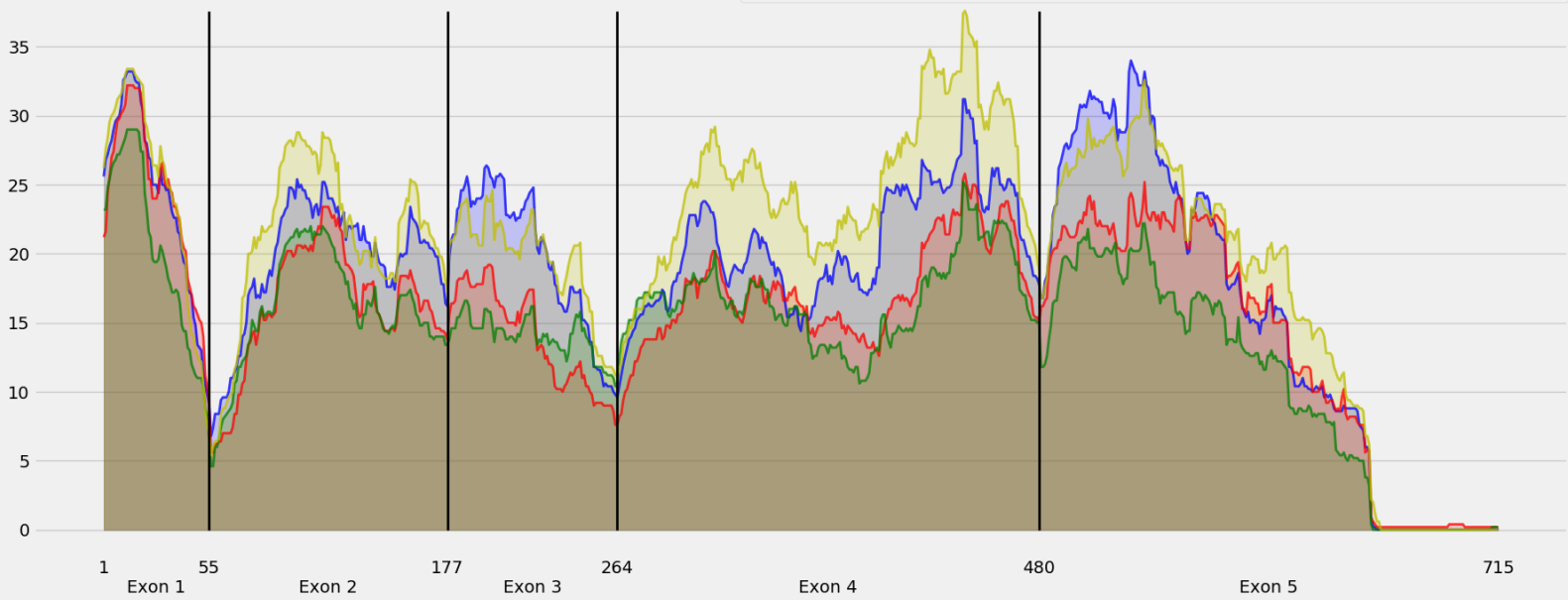
Coverage for chr1:92439010-92473860 - specific regions
Strand: Minus

9 months - #samples: 5 - aggregate mean coverage: 16.81 - sd between samples: 0.23
15 months - #samples: 5 - aggregate mean coverage: 13.69 - sd between samples: 0.33
24 months - #samples: 5 - aggregate mean coverage: 13.39 - sd between samples: 0.40
30 months - #samples: 5 - aggregate mean coverage: 19.70 - sd between samples: 0.50



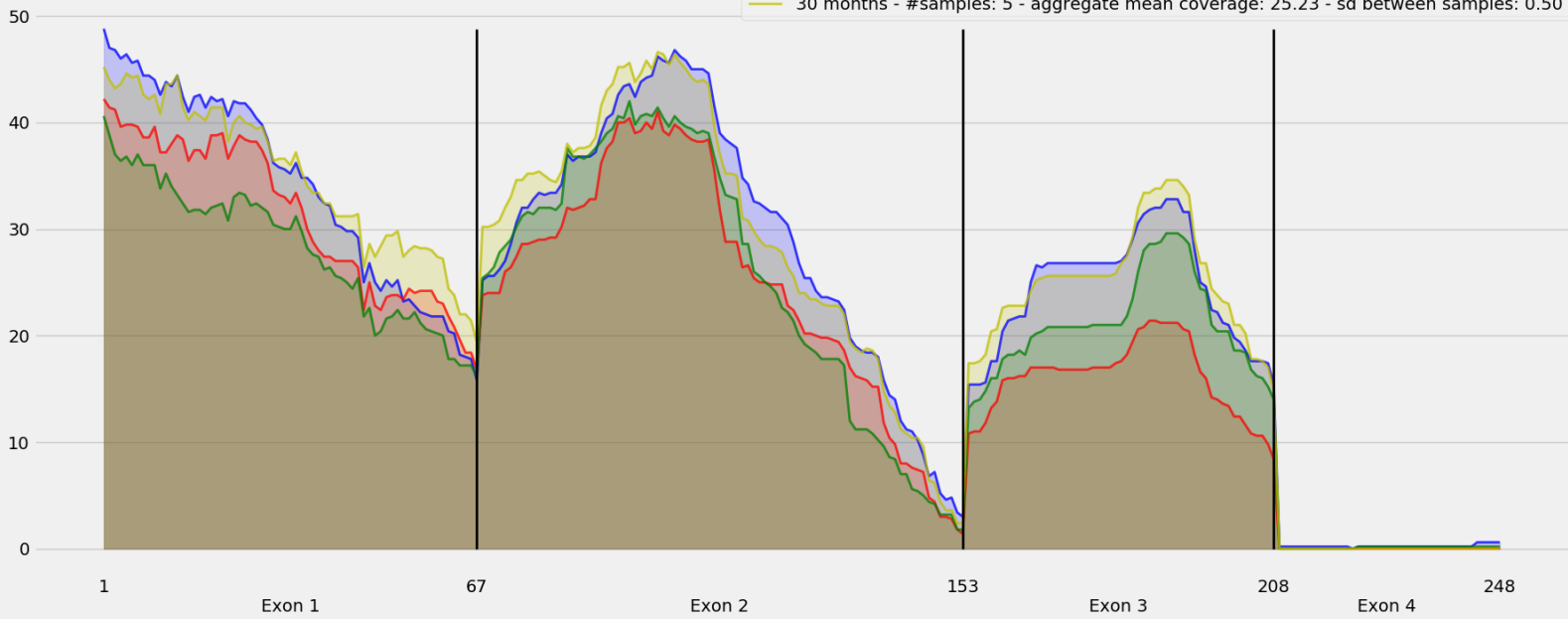
Coverage for chr1:92439010-92473860 - specific regions
Strand: Minus

9 months - #samples: 5 - aggregate mean coverage: 18.67 - sd between samples: 0.23
15 months - #samples: 5 - aggregate mean coverage: 15.78 - sd between samples: 0.33
24 months - #samples: 5 - aggregate mean coverage: 14.39 - sd between samples: 0.40
30 months - #samples: 5 - aggregate mean coverage: 20.54 - sd between samples: 0.50



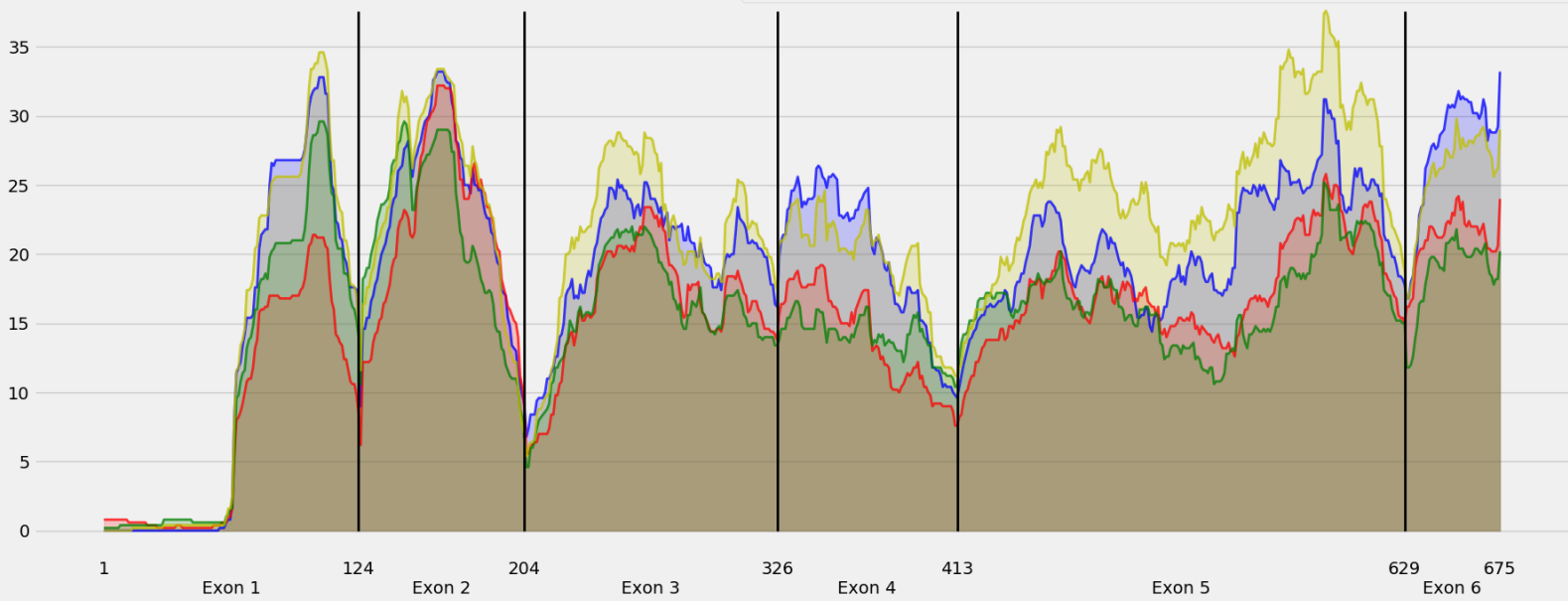
Coverage for chr1:92439010-92473860 - specific regions
Strand: Minus

9 months - #samples: 5 - aggregate mean coverage: 24.89 - sd between samples: 0.23
15 months - #samples: 5 - aggregate mean coverage: 20.69 - sd between samples: 0.33
24 months - #samples: 5 - aggregate mean coverage: 21.14 - sd between samples: 0.40
30 months - #samples: 5 - aggregate mean coverage: 25.23 - sd between samples: 0.50



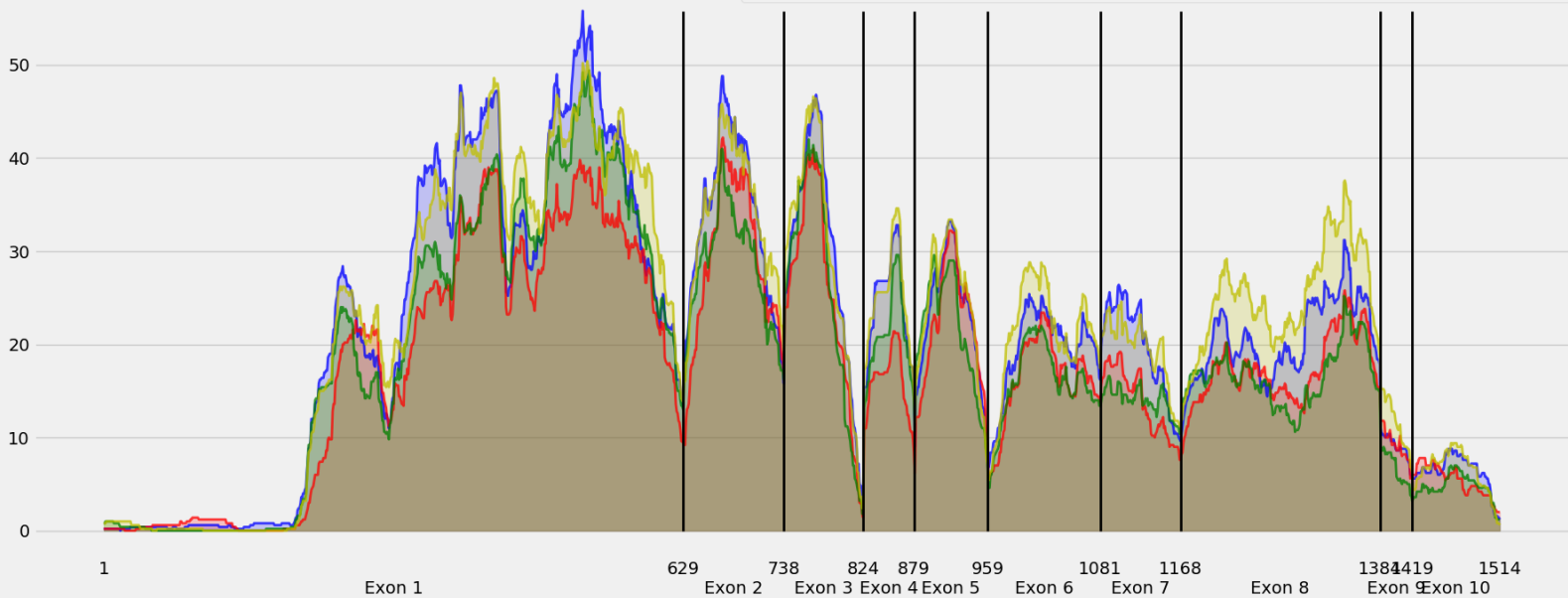
Coverage for chr1:92439010-92473860 - specific regions
Strand: Minus

9 months - #samples: 5 - aggregate mean coverage: 19.42 - sd between samples: 0.23
15 months - #samples: 5 - aggregate mean coverage: 15.72 - sd between samples: 0.33
24 months - #samples: 5 - aggregate mean coverage: 15.66 - sd between samples: 0.40
30 months - #samples: 5 - aggregate mean coverage: 21.19 - sd between samples: 0.50



Coverage for chr1:92439010-92473860 - specific regions
Strand: Minus

9 months - #samples: 5 - aggregate mean coverage: 21.32 - sd between samples: 0.23
15 months - #samples: 5 - aggregate mean coverage: 17.34 - sd between samples: 0.33
24 months - #samples: 5 - aggregate mean coverage: 18.14 - sd between samples: 0.40
30 months - #samples: 5 - aggregate mean coverage: 22.30 - sd between samples: 0.50



Coverage for chr1:92439010-92473860 - specific regions
Strand: Minus

9 months - #samples: 5 - aggregate mean coverage: 0.63 - sd between samples: 0.23
15 months - #samples: 5 - aggregate mean coverage: 0.54 - sd between samples: 0.33
24 months - #samples: 5 - aggregate mean coverage: 0.46 - sd between samples: 0.40
30 months - #samples: 5 - aggregate mean coverage: 0.62 - sd between samples: 0.50

