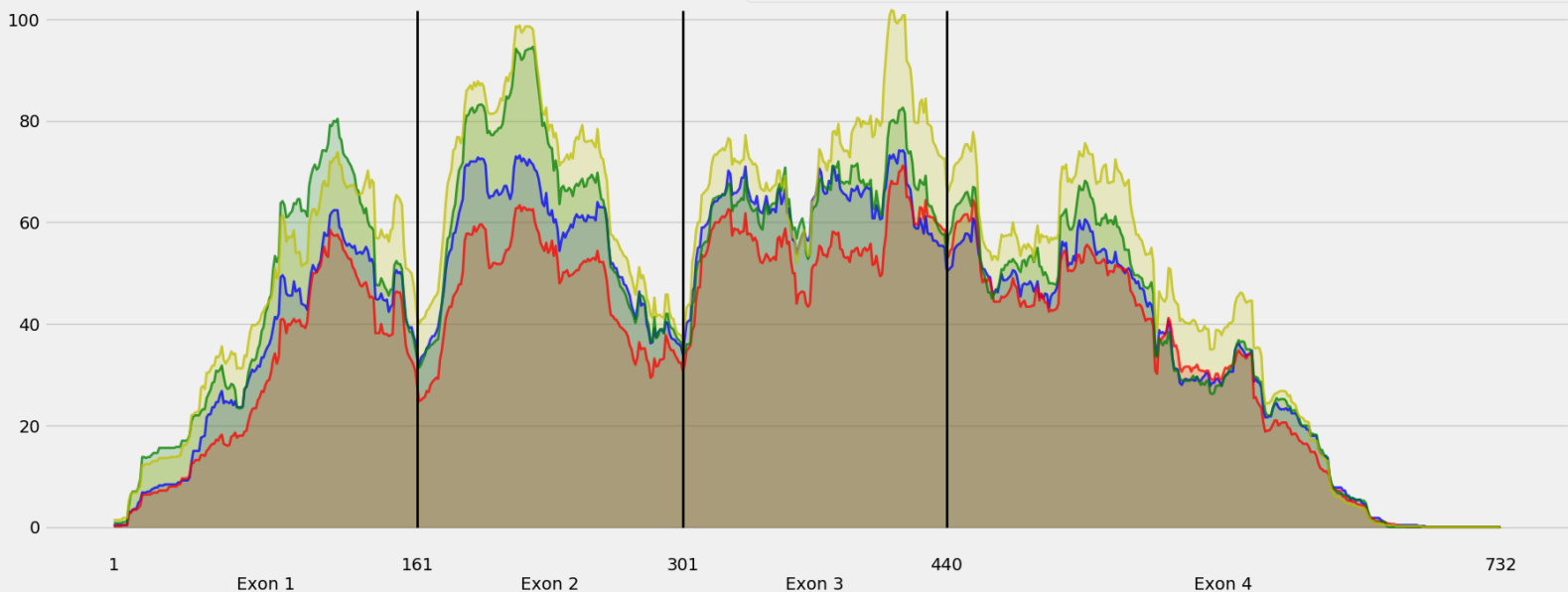


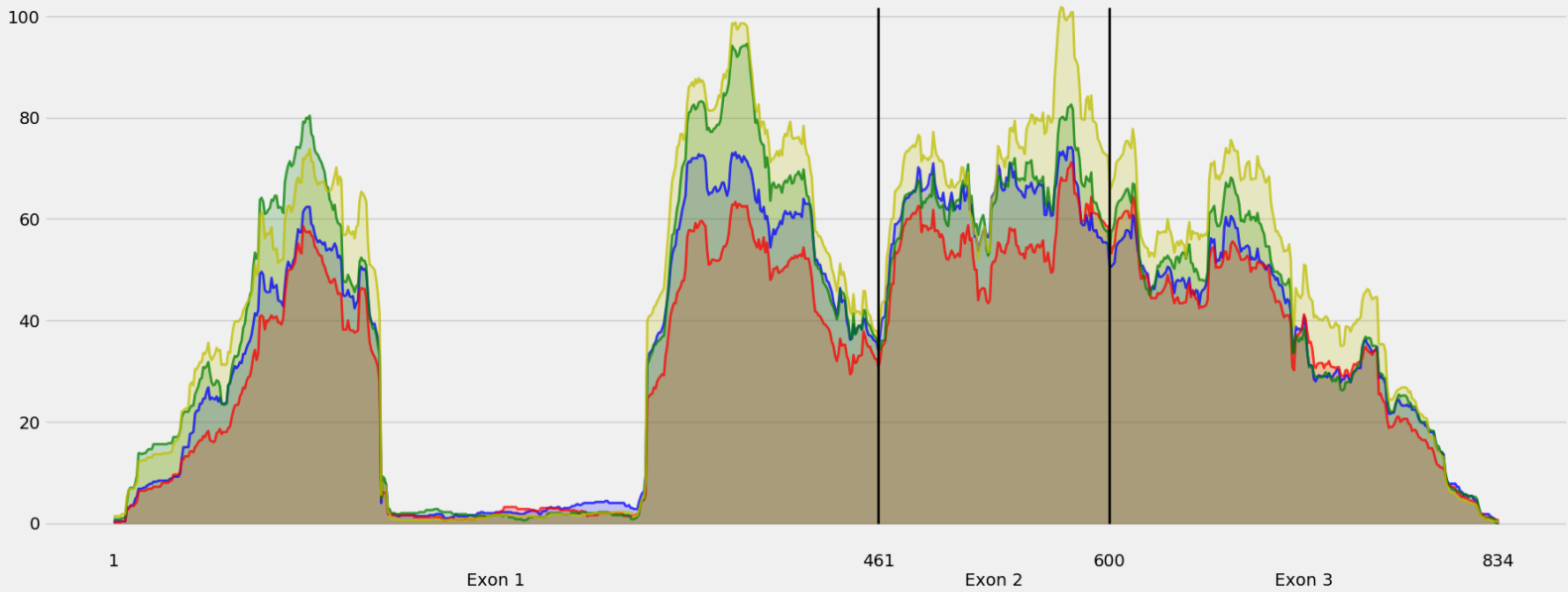
Coverage for chr17:24722060-24724478 - specific regions
Strand: Minus

9 months - #samples: 5 - aggregate mean coverage: 40.83 - sd between samples: 1.56
15 months - #samples: 5 - aggregate mean coverage: 36.36 - sd between samples: 4.02
24 months - #samples: 5 - aggregate mean coverage: 44.79 - sd between samples: 5.23
30 months - #samples: 5 - aggregate mean coverage: 49.75 - sd between samples: 5.78



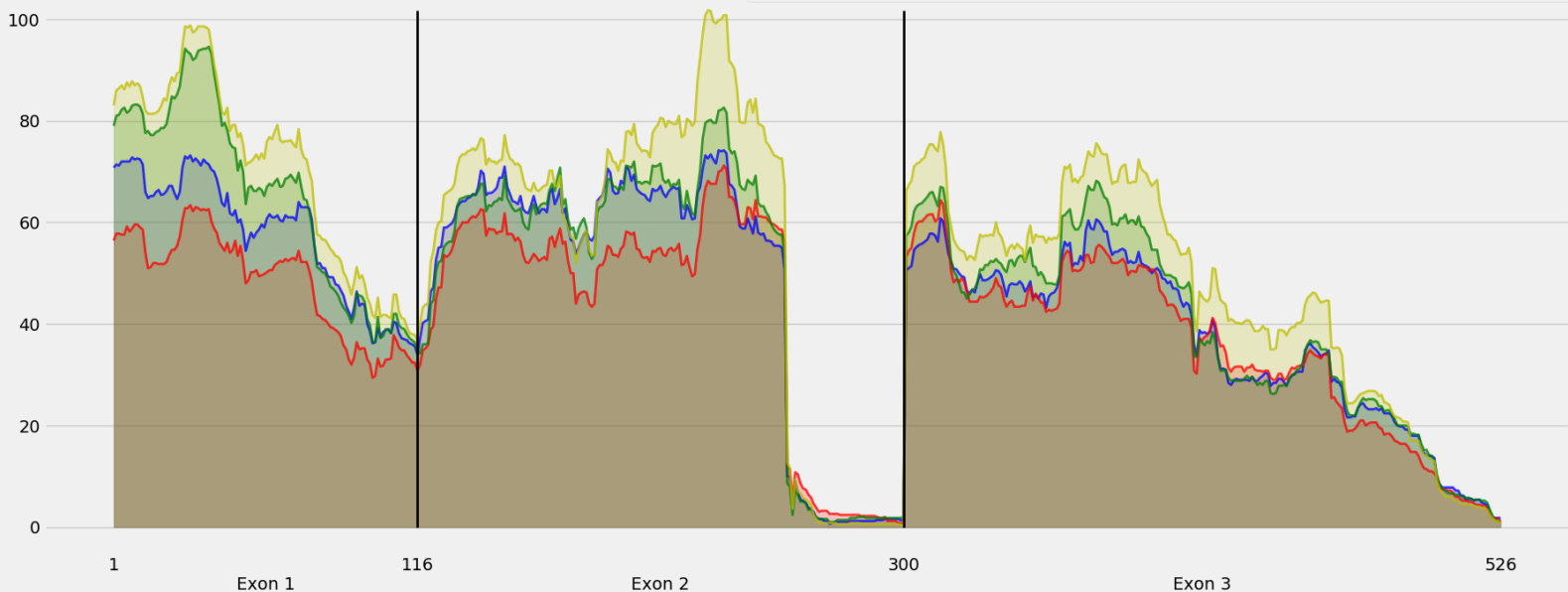
Coverage for chr17:24722060-24724478 - specific region
Strand: Minus

9 months - #samples: 5 - aggregate mean coverage: 36.34 - sd between samples: 1.56
15 months - #samples: 5 - aggregate mean coverage: 32.30 - sd between samples: 4.02
24 months - #samples: 5 - aggregate mean coverage: 39.70 - sd between samples: 5.23
30 months - #samples: 5 - aggregate mean coverage: 43.96 - sd between samples: 5.78



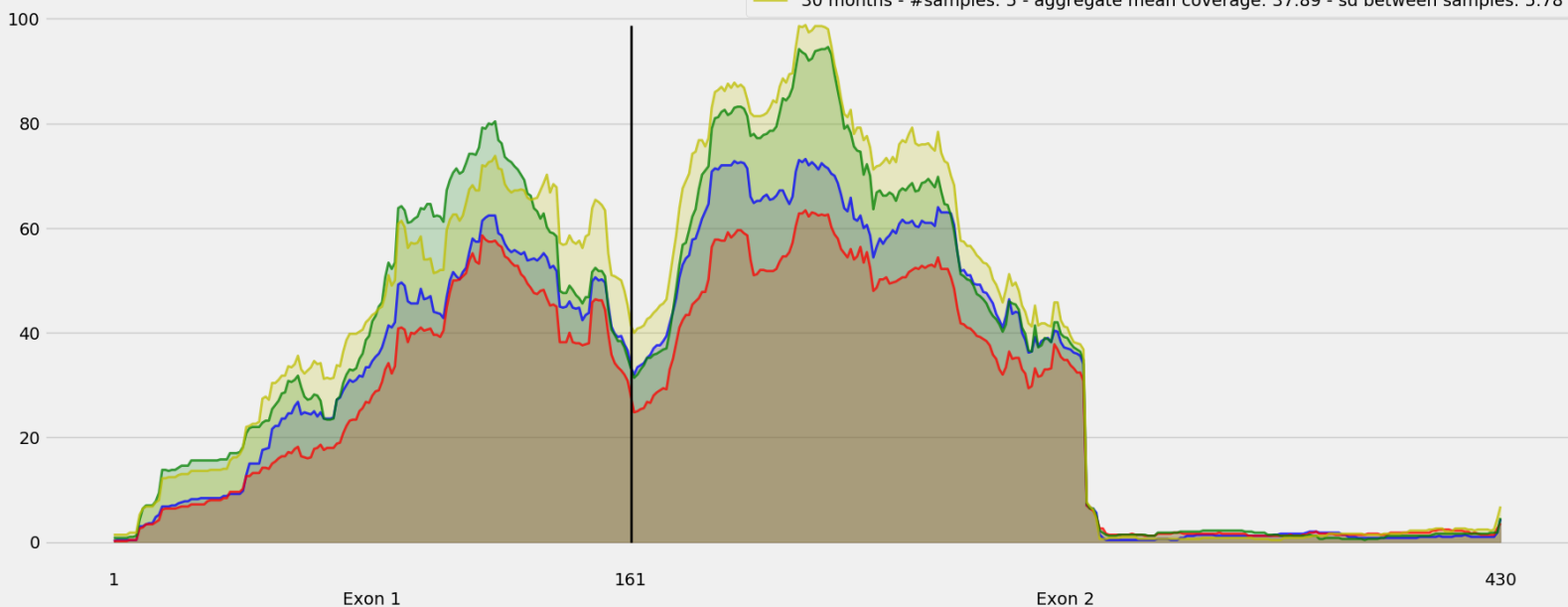
Coverage for chr17:24722060-24724478 - specific region
Strand: Minus

9 months - #samples: 5 - aggregate mean coverage: 45.15 - sd between samples: 1.56
15 months - #samples: 5 - aggregate mean coverage: 40.78 - sd between samples: 4.02
24 months - #samples: 5 - aggregate mean coverage: 48.23 - sd between samples: 5.23
30 months - #samples: 5 - aggregate mean coverage: 54.36 - sd between samples: 5.78



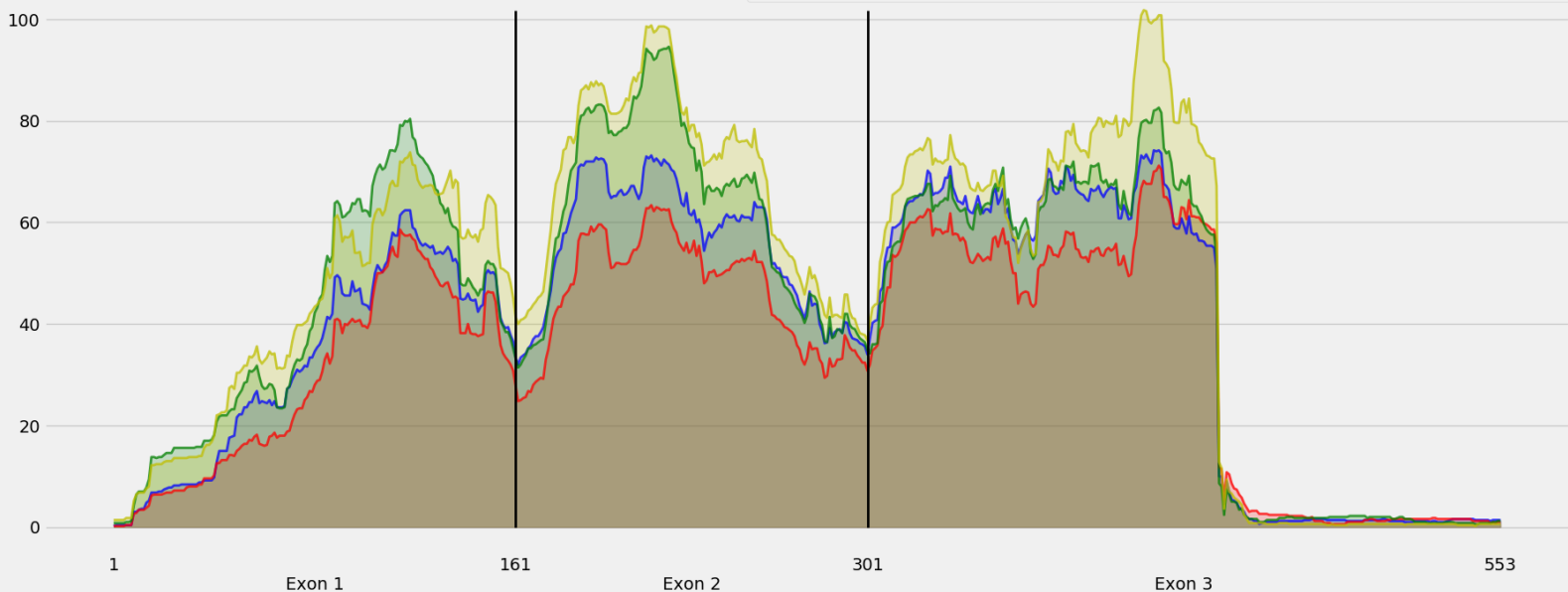
Coverage for chr17:24722060-24724478 - specific regions
Strand: Minus

9 months - #samples: 5 - aggregate mean coverage: 30.41 - sd between samples: 1.56
15 months - #samples: 5 - aggregate mean coverage: 25.93 - sd between samples: 4.02
24 months - #samples: 5 - aggregate mean coverage: 35.65 - sd between samples: 5.23
30 months - #samples: 5 - aggregate mean coverage: 37.89 - sd between samples: 5.78



Coverage for chr17:24722060-24724478 - specific region
Strand: Minus

9 months - #samples: 5 - aggregate mean coverage: 39.50 - sd between samples: 1.56
15 months - #samples: 5 - aggregate mean coverage: 34.19 - sd between samples: 4.02
24 months - #samples: 5 - aggregate mean coverage: 43.86 - sd between samples: 5.23
30 months - #samples: 5 - aggregate mean coverage: 47.76 - sd between samples: 5.78



Coverage for chr17:24722060-24724478 - specific region
Strand: Minus

9 months - #samples: 5 - aggregate mean coverage: 30.26 - sd between samples: 1.56
15 months - #samples: 5 - aggregate mean coverage: 28.17 - sd between samples: 4.02
24 months - #samples: 5 - aggregate mean coverage: 31.81 - sd between samples: 5.23
30 months - #samples: 5 - aggregate mean coverage: 36.25 - sd between samples: 5.78

