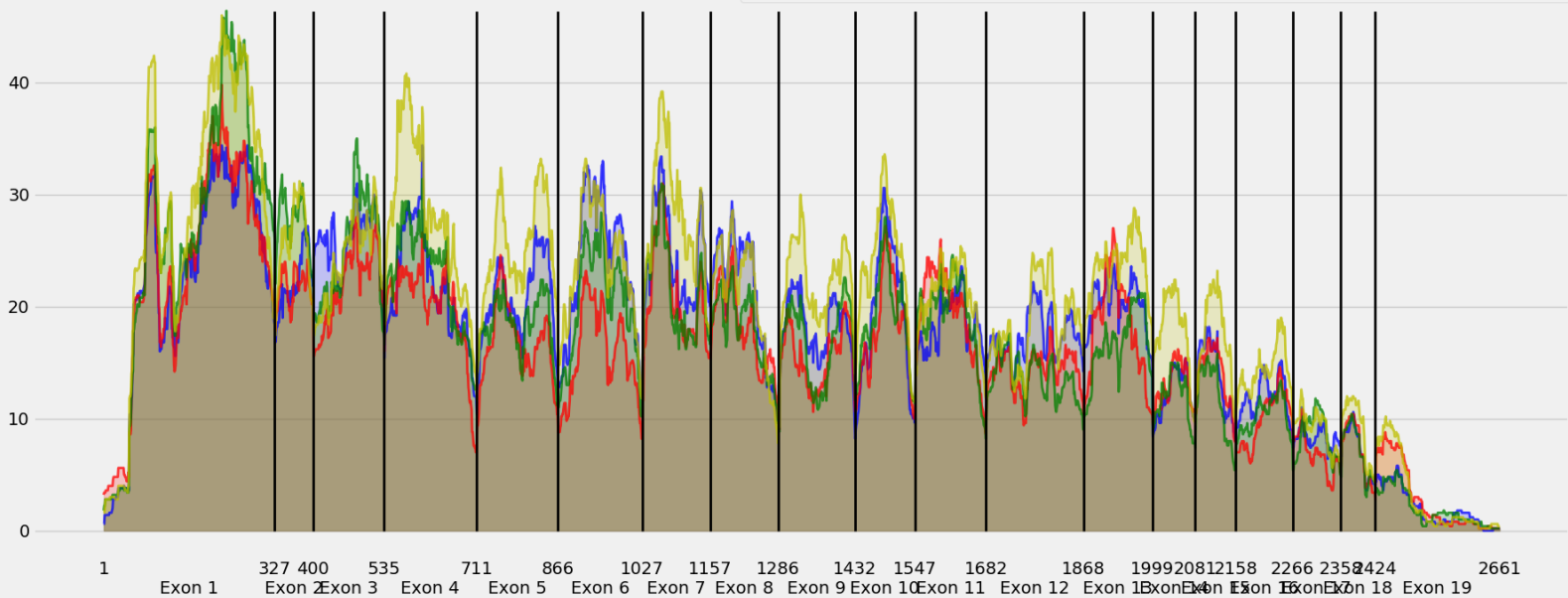


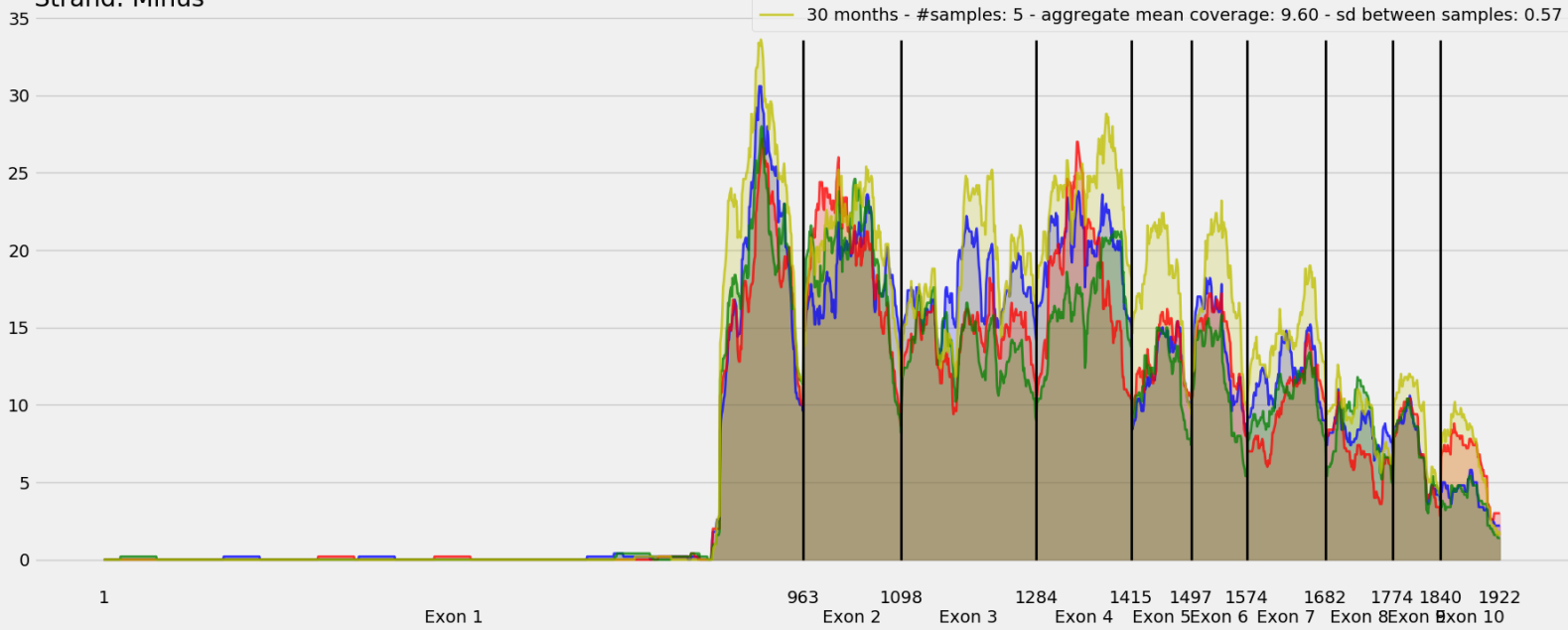
Coverage for chr1:63143596-63176833 - specific regions  
Strand: Minus

9 months - #samples: 5 - aggregate mean coverage: 17.89 - sd between samples: 0.25  
15 months - #samples: 5 - aggregate mean coverage: 16.09 - sd between samples: 0.36  
24 months - #samples: 5 - aggregate mean coverage: 17.25 - sd between samples: 0.54  
30 months - #samples: 5 - aggregate mean coverage: 20.72 - sd between samples: 0.57



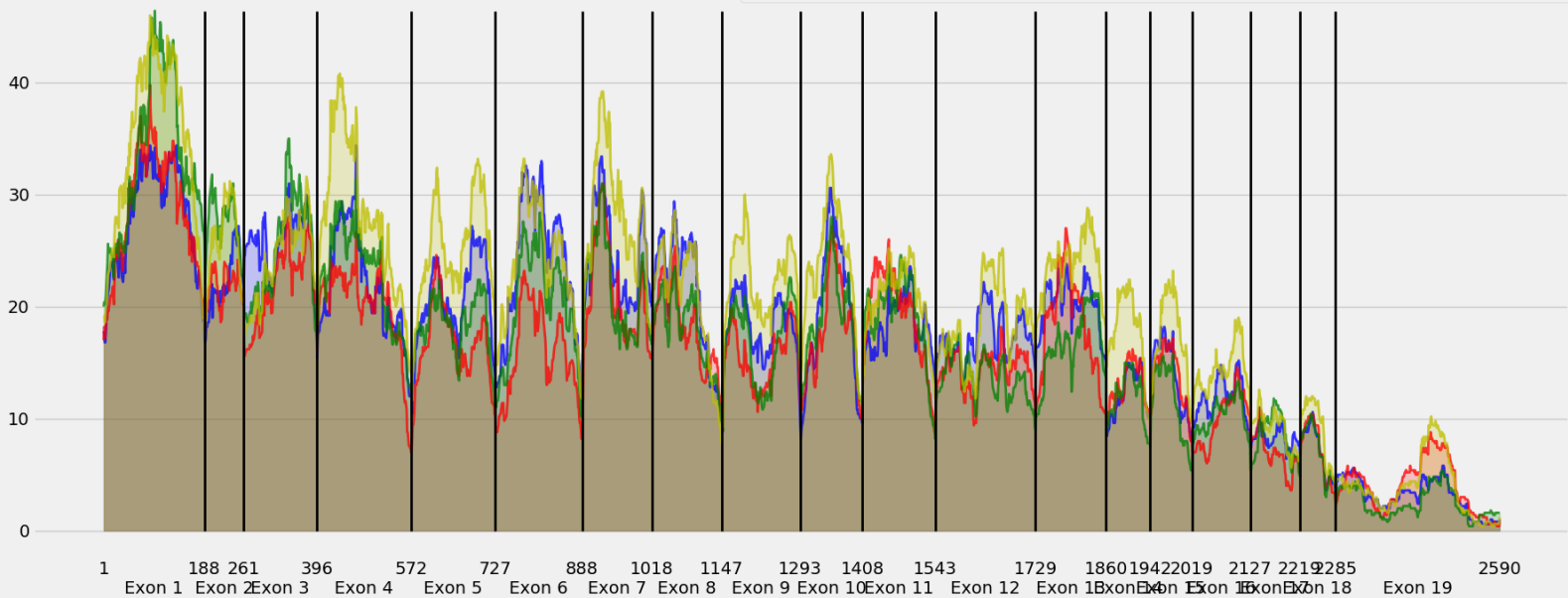
Coverage for chr1:63143596-63176833 - specific regions  
Strand: Minus

9 months - #samples: 5 - aggregate mean coverage: 8.12 - sd between samples: 0.25  
15 months - #samples: 5 - aggregate mean coverage: 7.62 - sd between samples: 0.36  
24 months - #samples: 5 - aggregate mean coverage: 7.34 - sd between samples: 0.54  
30 months - #samples: 5 - aggregate mean coverage: 9.60 - sd between samples: 0.57



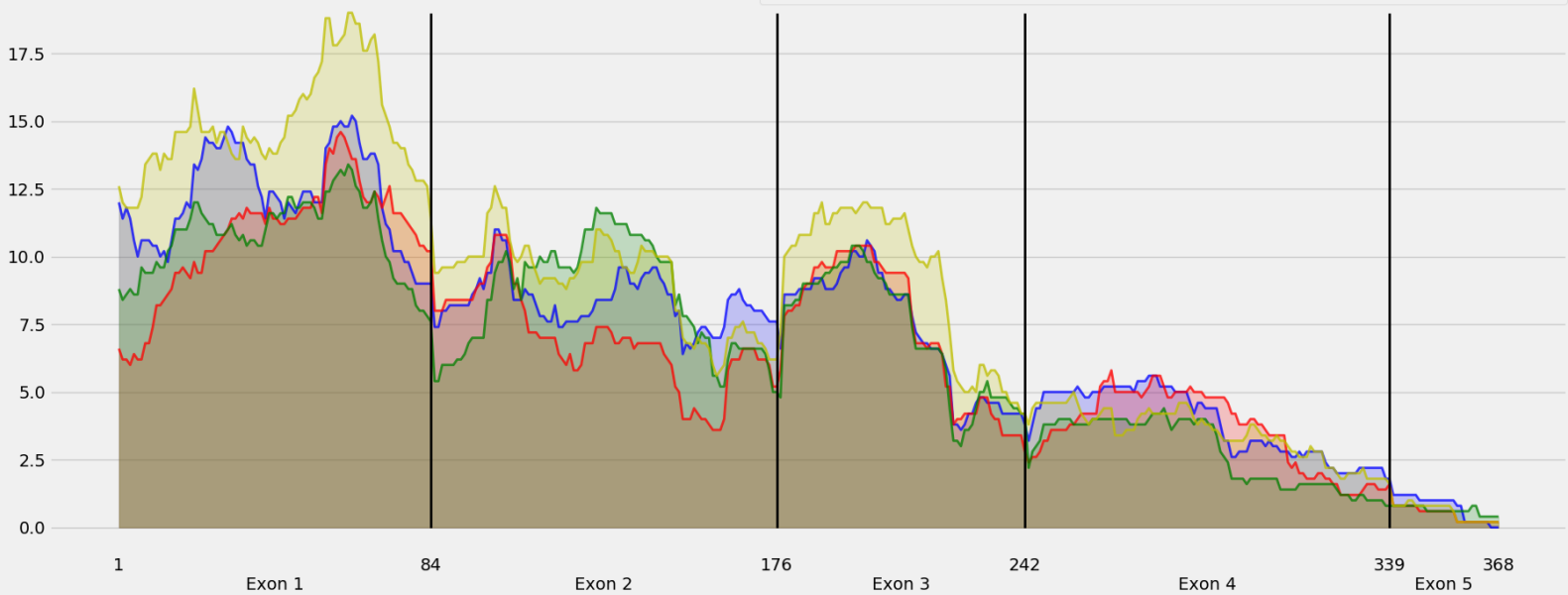
Coverage for chr1:63143596-63176833 - specific regions  
Strand: Minus

9 months - #samples: 5 - aggregate mean coverage: 17.78 - sd between samples: 0.25  
15 months - #samples: 5 - aggregate mean coverage: 15.90 - sd between samples: 0.36  
24 months - #samples: 5 - aggregate mean coverage: 16.93 - sd between samples: 0.54  
30 months - #samples: 5 - aggregate mean coverage: 20.48 - sd between samples: 0.57



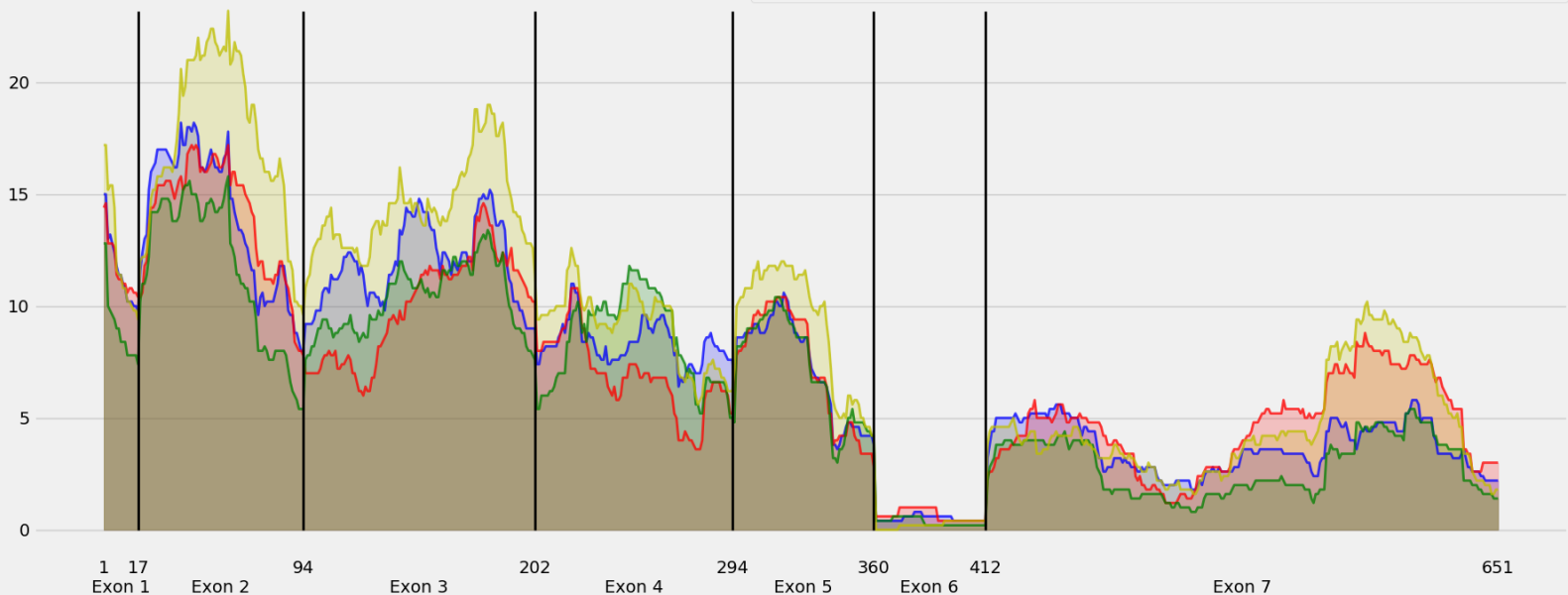
Coverage for chr1:63143596-63176833 - specific regions  
Strand: Minus

9 months - #samples: 5 - aggregate mean coverage: 7.23 - sd between samples: 0.25  
15 months - #samples: 5 - aggregate mean coverage: 6.45 - sd between samples: 0.36  
24 months - #samples: 5 - aggregate mean coverage: 6.63 - sd between samples: 0.54  
30 months - #samples: 5 - aggregate mean coverage: 8.25 - sd between samples: 0.57



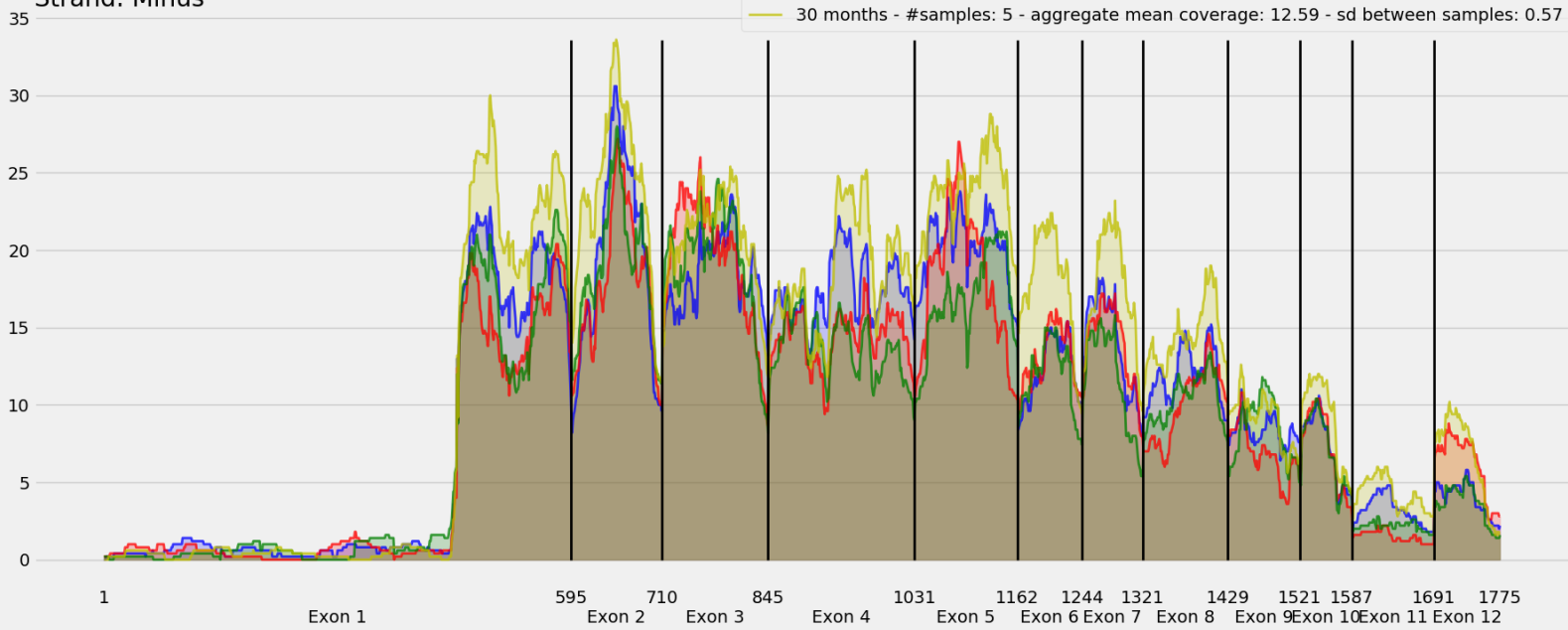
Coverage for chr1:63143596-63176833 - specific regions  
Strand: Minus

9 months - #samples: 5 - aggregate mean coverage: 7.24 - sd between samples: 0.25  
15 months - #samples: 5 - aggregate mean coverage: 7.10 - sd between samples: 0.36  
24 months - #samples: 5 - aggregate mean coverage: 6.32 - sd between samples: 0.54  
30 months - #samples: 5 - aggregate mean coverage: 8.71 - sd between samples: 0.57



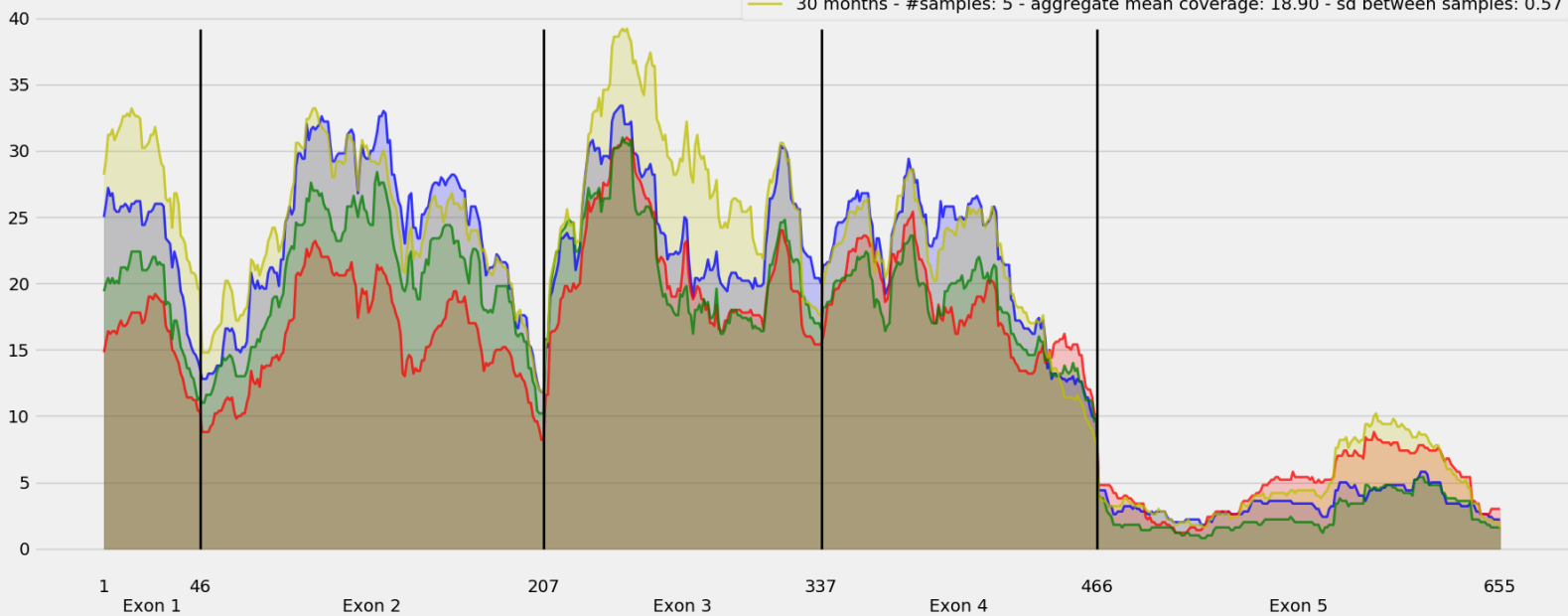
Coverage for chr1:63143596-63176833 - specific regions  
Strand: Minus

9 months - #samples: 5 - aggregate mean coverage: 10.62 - sd between samples: 0.25  
15 months - #samples: 5 - aggregate mean coverage: 9.73 - sd between samples: 0.36  
24 months - #samples: 5 - aggregate mean coverage: 9.60 - sd between samples: 0.54  
30 months - #samples: 5 - aggregate mean coverage: 12.59 - sd between samples: 0.57



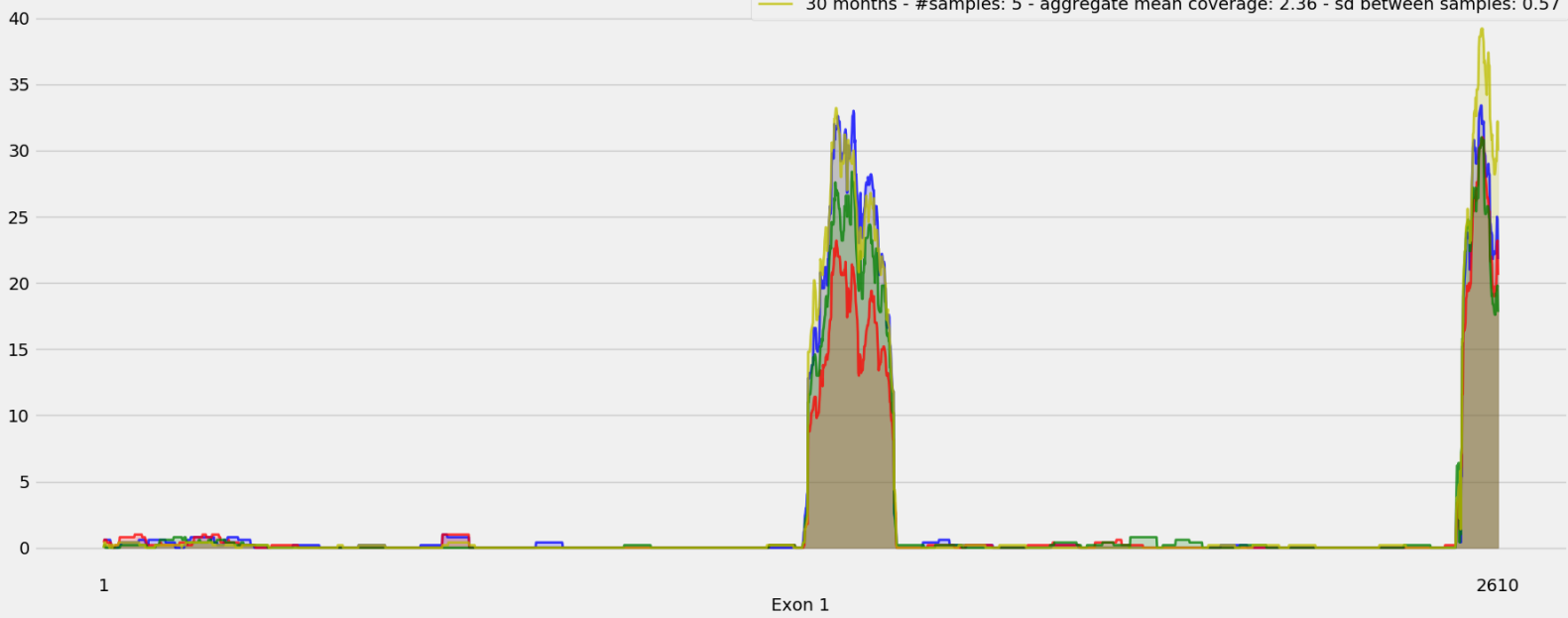
Coverage for chr1:63143596-63176833 - specific regions  
Strand: Minus

9 months - #samples: 5 - aggregate mean coverage: 17.50 - sd between samples: 0.25  
15 months - #samples: 5 - aggregate mean coverage: 14.12 - sd between samples: 0.36  
24 months - #samples: 5 - aggregate mean coverage: 14.85 - sd between samples: 0.54  
30 months - #samples: 5 - aggregate mean coverage: 18.90 - sd between samples: 0.57



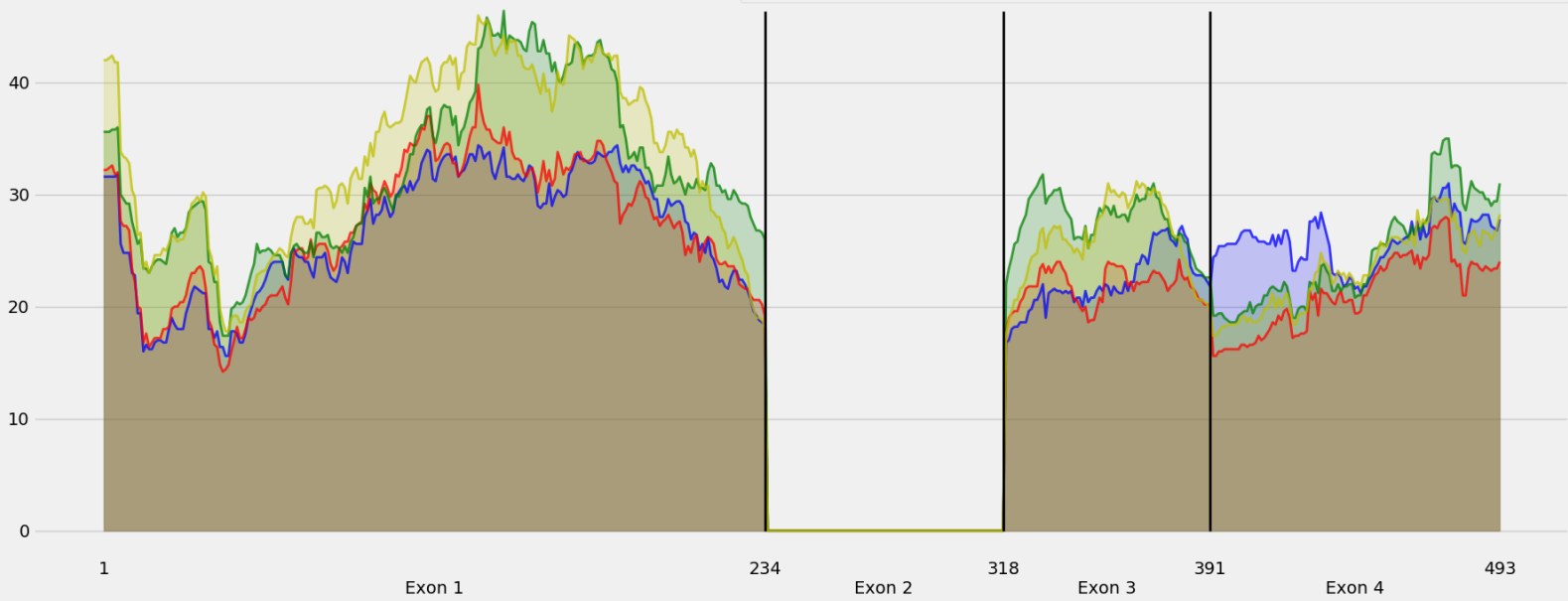
Coverage for chr1:63143596-63176833 - specific regions  
Strand: Minus

9 months - #samples: 5 - aggregate mean coverage: 2.29 - sd between samples: 0.25  
15 months - #samples: 5 - aggregate mean coverage: 1.72 - sd between samples: 0.36  
24 months - #samples: 5 - aggregate mean coverage: 2.01 - sd between samples: 0.54  
30 months - #samples: 5 - aggregate mean coverage: 2.36 - sd between samples: 0.57



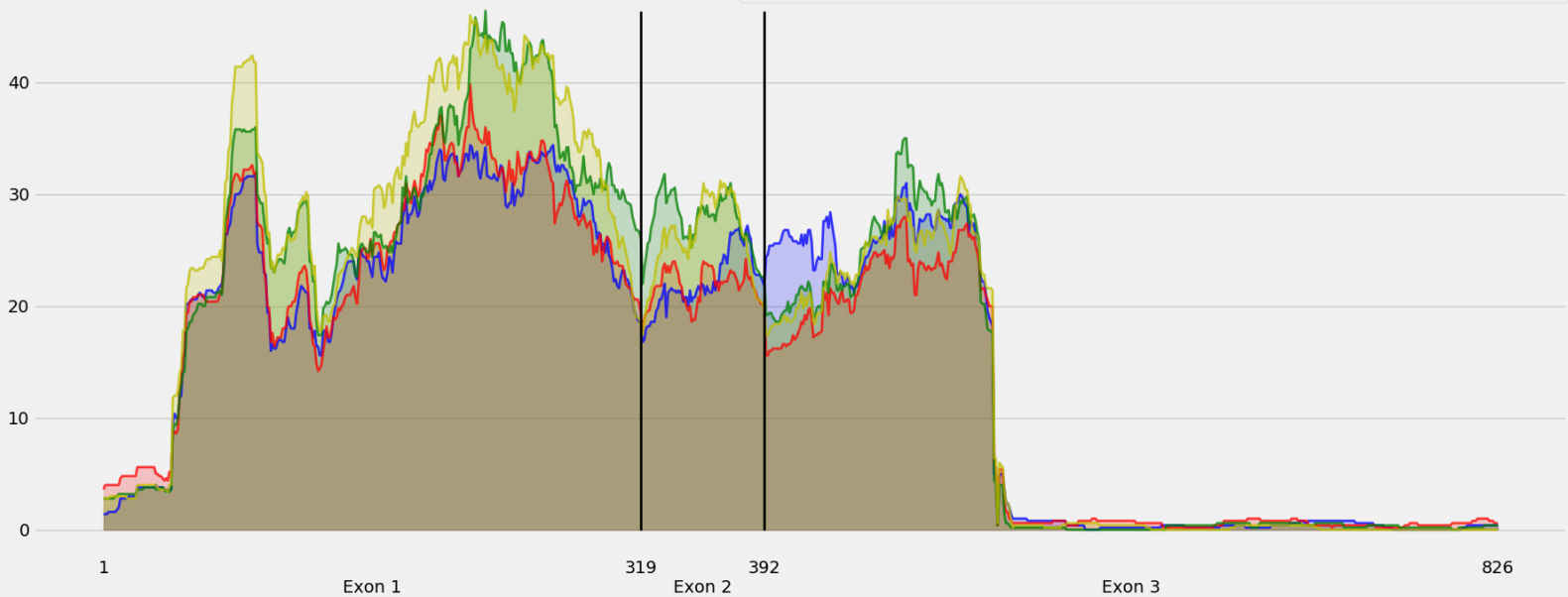
Coverage for chr1:63143596-63176833 - specific regions  
Strand: Minus

9 months - #samples: 5 - aggregate mean coverage: 21.27 - sd between samples: 0.25  
15 months - #samples: 5 - aggregate mean coverage: 20.50 - sd between samples: 0.36  
24 months - #samples: 5 - aggregate mean coverage: 24.34 - sd between samples: 0.54  
30 months - #samples: 5 - aggregate mean coverage: 24.52 - sd between samples: 0.57



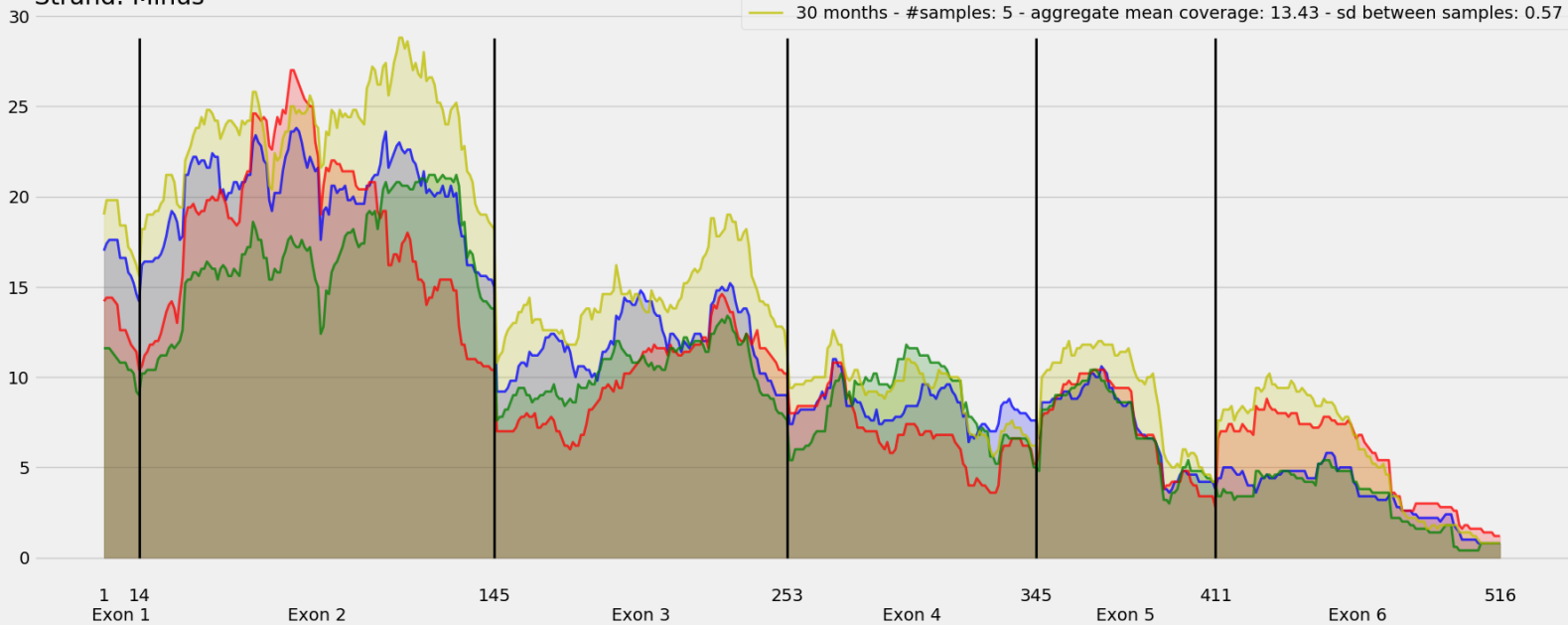
Coverage for chr1:63143596-63176833 - specific regions  
Strand: Minus

9 months - #samples: 5 - aggregate mean coverage: 15.23 - sd between samples: 0.25  
15 months - #samples: 5 - aggregate mean coverage: 14.84 - sd between samples: 0.36  
24 months - #samples: 5 - aggregate mean coverage: 17.08 - sd between samples: 0.54  
30 months - #samples: 5 - aggregate mean coverage: 17.38 - sd between samples: 0.57



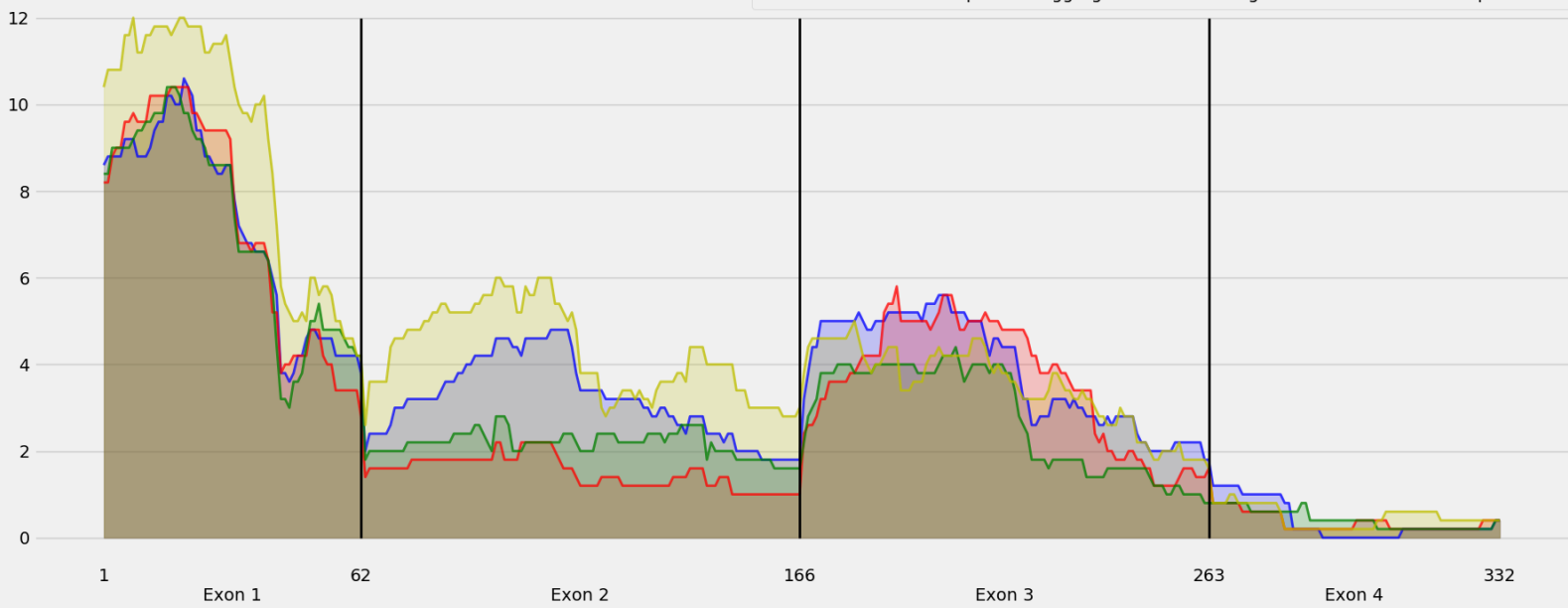
Coverage for chr1:63143596-63176833 - specific regions  
Strand: Minus

9 months - #samples: 5 - aggregate mean coverage: 11.17 - sd between samples: 0.25  
15 months - #samples: 5 - aggregate mean coverage: 10.32 - sd between samples: 0.36  
24 months - #samples: 5 - aggregate mean coverage: 9.76 - sd between samples: 0.54  
30 months - #samples: 5 - aggregate mean coverage: 13.43 - sd between samples: 0.57



Coverage for chr1:63143596-63176833 - specific regions  
Strand: Minus

9 months - #samples: 5 - aggregate mean coverage: 3.53 - sd between samples: 0.25  
15 months - #samples: 5 - aggregate mean coverage: 2.94 - sd between samples: 0.36  
24 months - #samples: 5 - aggregate mean coverage: 2.90 - sd between samples: 0.54  
30 months - #samples: 5 - aggregate mean coverage: 4.14 - sd between samples: 0.57



Coverage for chr1:63143596-63176833 - specific regions  
Strand: Minus

9 months - #samples: 5 - aggregate mean coverage: 5.53 - sd between samples: 0.25  
15 months - #samples: 5 - aggregate mean coverage: 5.80 - sd between samples: 0.36  
24 months - #samples: 5 - aggregate mean coverage: 6.65 - sd between samples: 0.54  
30 months - #samples: 5 - aggregate mean coverage: 6.88 - sd between samples: 0.57

