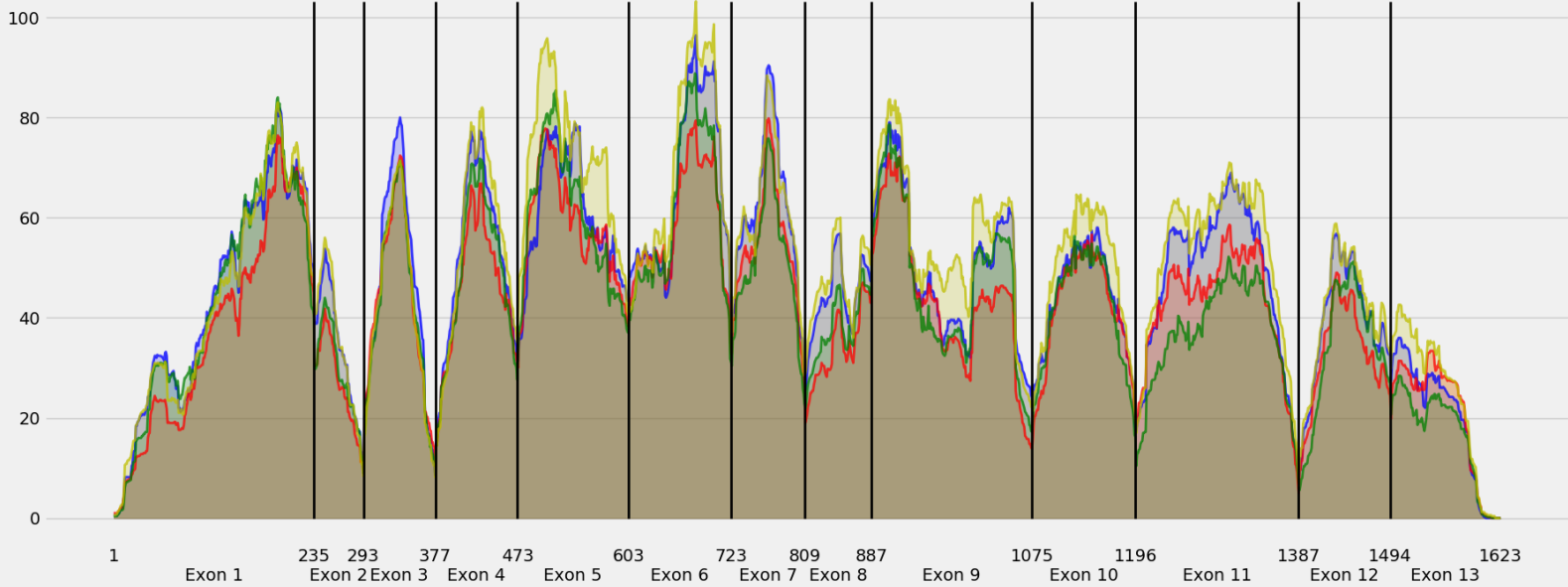


Coverage for chr1:171234853-171251388 - specific regions
Strand: Minus

9 months - #samples: 5 - aggregate mean coverage: 47.14 - sd between samples: 0.88
15 months - #samples: 5 - aggregate mean coverage: 41.79 - sd between samples: 1.22
24 months - #samples: 5 - aggregate mean coverage: 42.58 - sd between samples: 1.97
30 months - #samples: 5 - aggregate mean coverage: 50.10 - sd between samples: 1.60



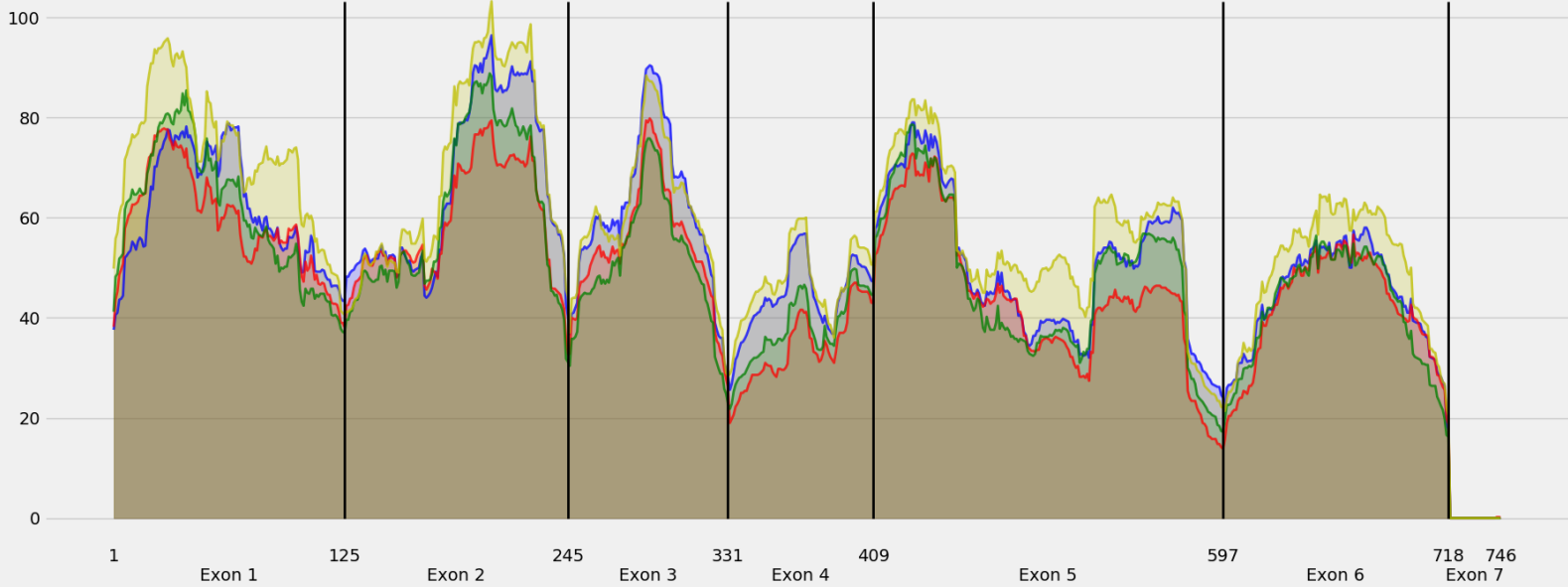
Coverage for chr1:171234853-171251388 - specific regions
Strand: Minus

9 months - #samples: 5 - aggregate mean coverage: 47.29 - sd between samples: 0.88
15 months - #samples: 5 - aggregate mean coverage: 42.18 - sd between samples: 1.22
24 months - #samples: 5 - aggregate mean coverage: 42.82 - sd between samples: 1.97
30 months - #samples: 5 - aggregate mean coverage: 50.26 - sd between samples: 1.60



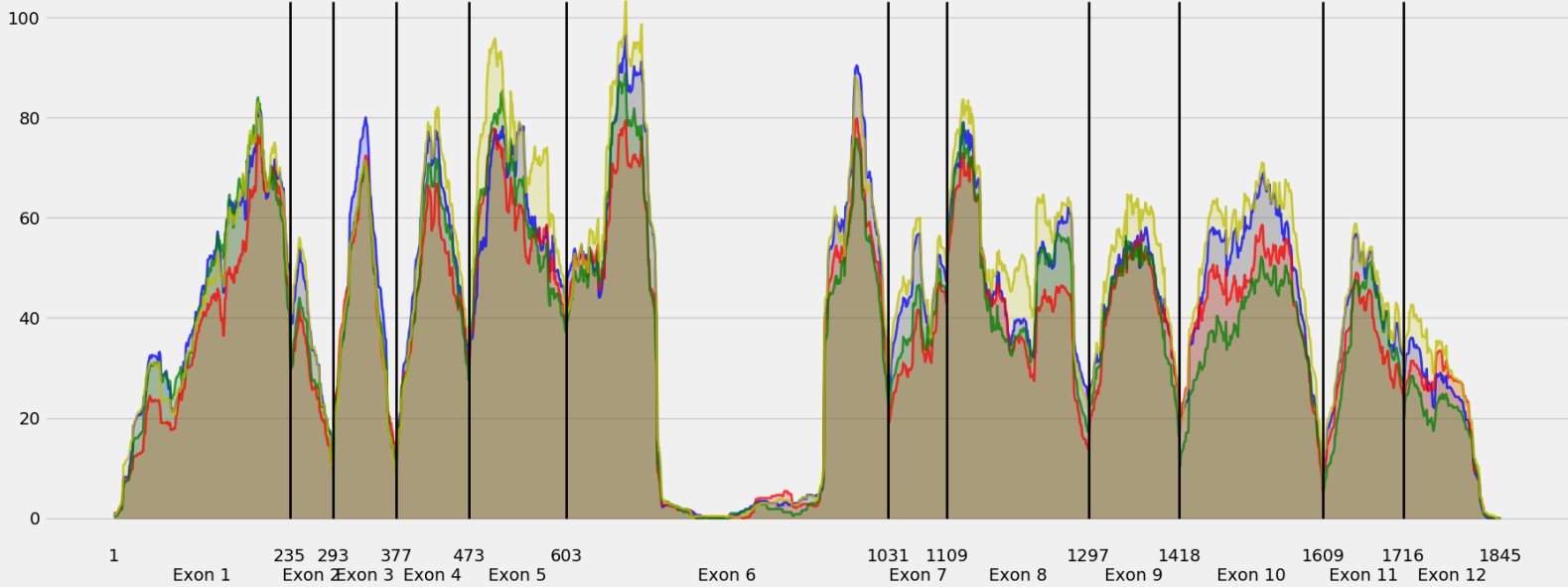
Coverage for chr1:171234853-171251388 - specific regions
Strand: Minus

9 months - #samples: 5 - aggregate mean coverage: 52.60 - sd between samples: 0.88
15 months - #samples: 5 - aggregate mean coverage: 47.08 - sd between samples: 1.22
24 months - #samples: 5 - aggregate mean coverage: 48.62 - sd between samples: 1.97
30 months - #samples: 5 - aggregate mean coverage: 57.38 - sd between samples: 1.60



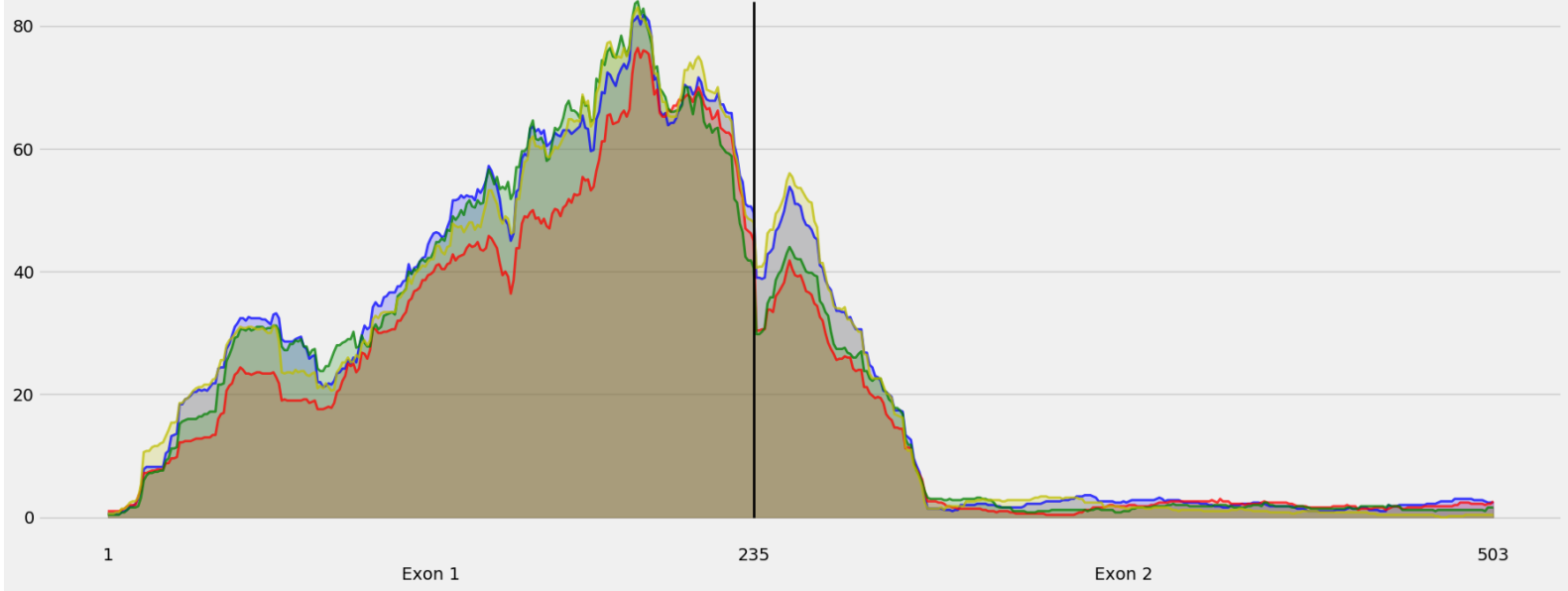
Coverage for chr1:171234853-171251388 - specific regions
Strand: Minus

9 months - #samples: 5 - aggregate mean coverage: 41.76 - sd between samples: 0.88
15 months - #samples: 5 - aggregate mean coverage: 37.03 - sd between samples: 1.22
24 months - #samples: 5 - aggregate mean coverage: 37.67 - sd between samples: 1.97
30 months - #samples: 5 - aggregate mean coverage: 44.37 - sd between samples: 1.60



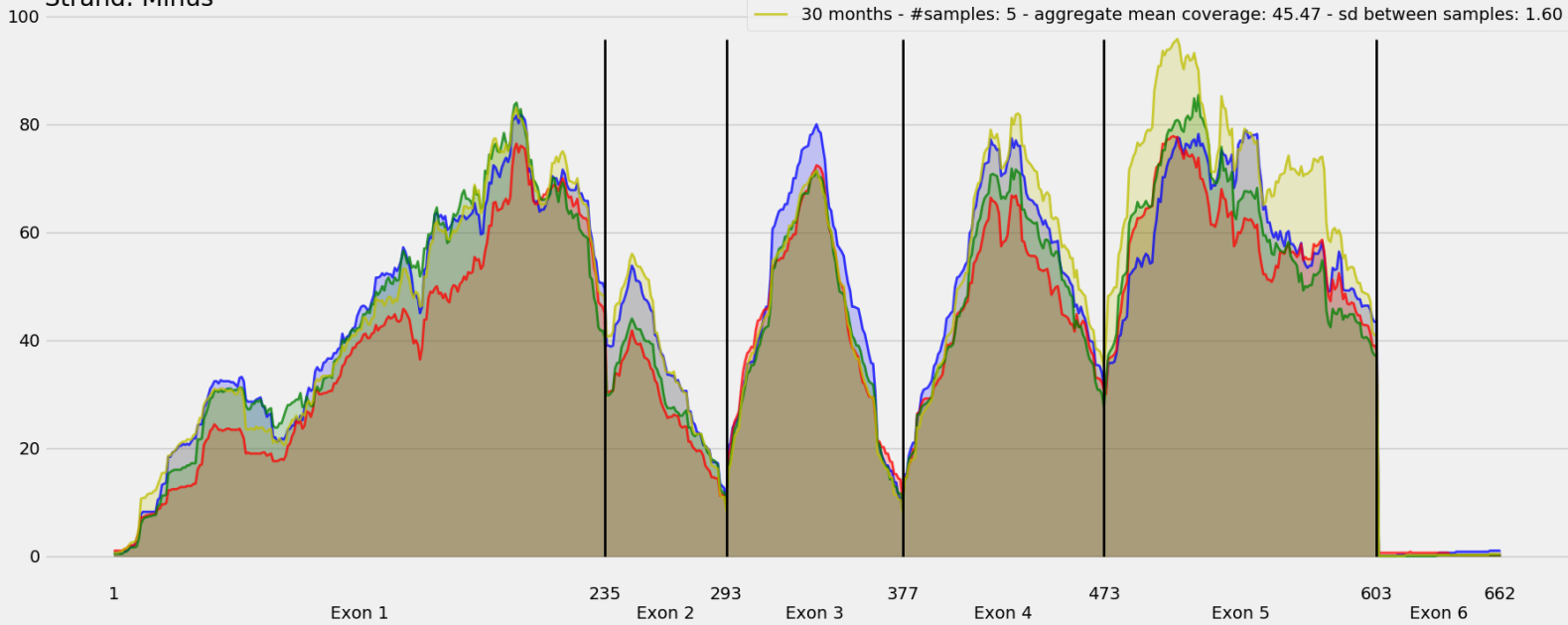
Coverage for chr1:171234853-171251388 - specific regions
Strand: Minus

9 months - #samples: 5 - aggregate mean coverage: 24.98 - sd between samples: 0.88
15 months - #samples: 5 - aggregate mean coverage: 21.22 - sd between samples: 1.22
24 months - #samples: 5 - aggregate mean coverage: 23.93 - sd between samples: 1.97
30 months - #samples: 5 - aggregate mean coverage: 24.57 - sd between samples: 1.60



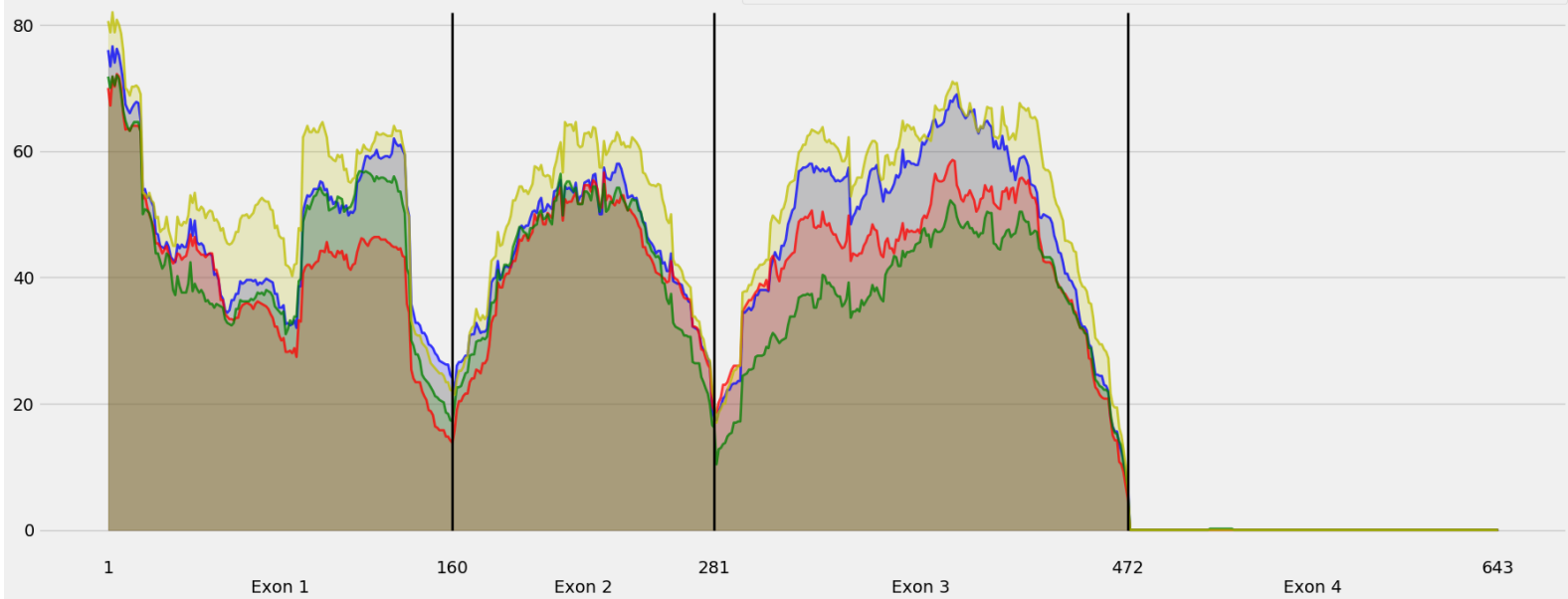
Coverage for chr1:171234853-171251388 - specific regions
Strand: Minus

9 months - #samples: 5 - aggregate mean coverage: 43.79 - sd between samples: 0.88
15 months - #samples: 5 - aggregate mean coverage: 39.07 - sd between samples: 1.22
24 months - #samples: 5 - aggregate mean coverage: 41.83 - sd between samples: 1.97
30 months - #samples: 5 - aggregate mean coverage: 45.47 - sd between samples: 1.60



Coverage for chr1:171234853-171251388 - specific region
Strand: Minus

9 months - #samples: 5 - aggregate mean coverage: 34.37 - sd between samples: 0.88
15 months - #samples: 5 - aggregate mean coverage: 30.54 - sd between samples: 1.22
24 months - #samples: 5 - aggregate mean coverage: 29.58 - sd between samples: 1.97
30 months - #samples: 5 - aggregate mean coverage: 37.86 - sd between samples: 1.60



Coverage for chr1:171234853-171251388 - specific region
Strand: Minus

9 months - #samples: 5 - aggregate mean coverage: 44.21 - sd between samples: 0.88
15 months - #samples: 5 - aggregate mean coverage: 38.53 - sd between samples: 1.22
24 months - #samples: 5 - aggregate mean coverage: 38.39 - sd between samples: 1.97
30 months - #samples: 5 - aggregate mean coverage: 48.08 - sd between samples: 1.60

