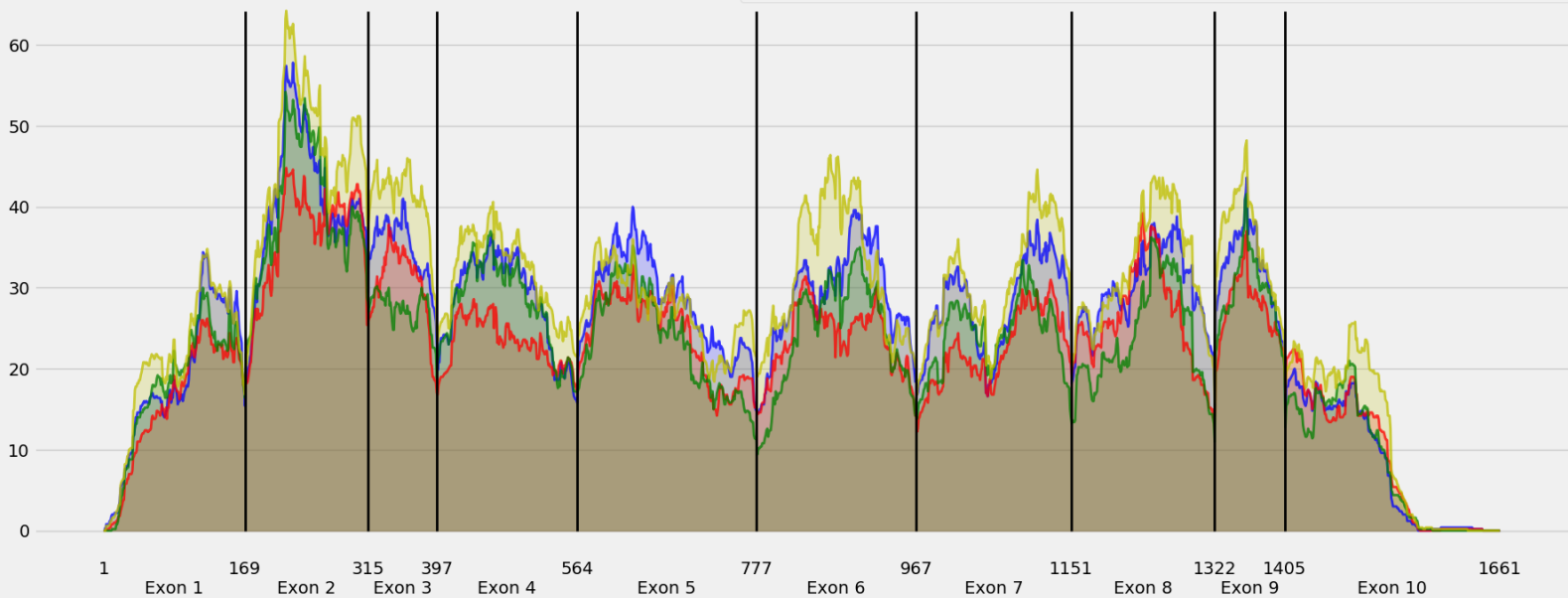


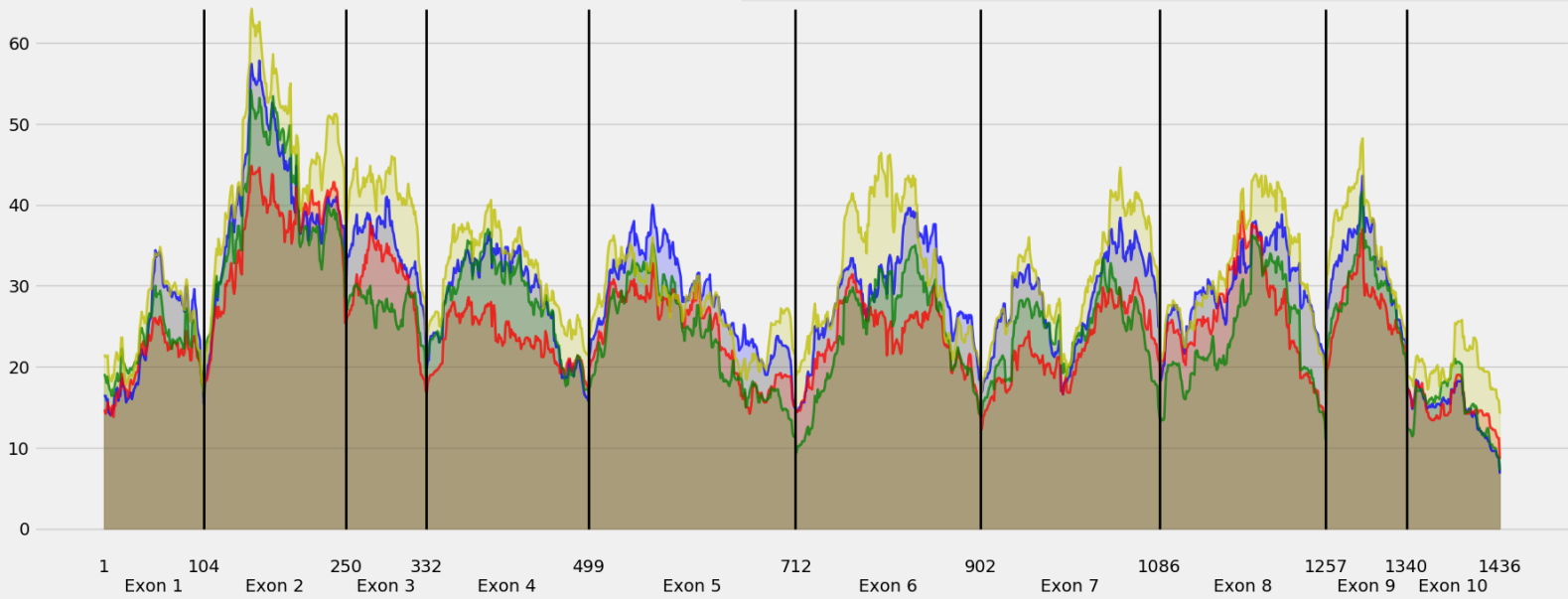
Coverage for chr19:4007497-4012806 - specific regions
Strand: Minus

9 months - #samples: 5 - aggregate mean coverage: 25.91 - sd between samples: 1.27
15 months - #samples: 5 - aggregate mean coverage: 22.22 - sd between samples: 2.36
24 months - #samples: 5 - aggregate mean coverage: 22.94 - sd between samples: 3.17
30 months - #samples: 5 - aggregate mean coverage: 28.60 - sd between samples: 3.30



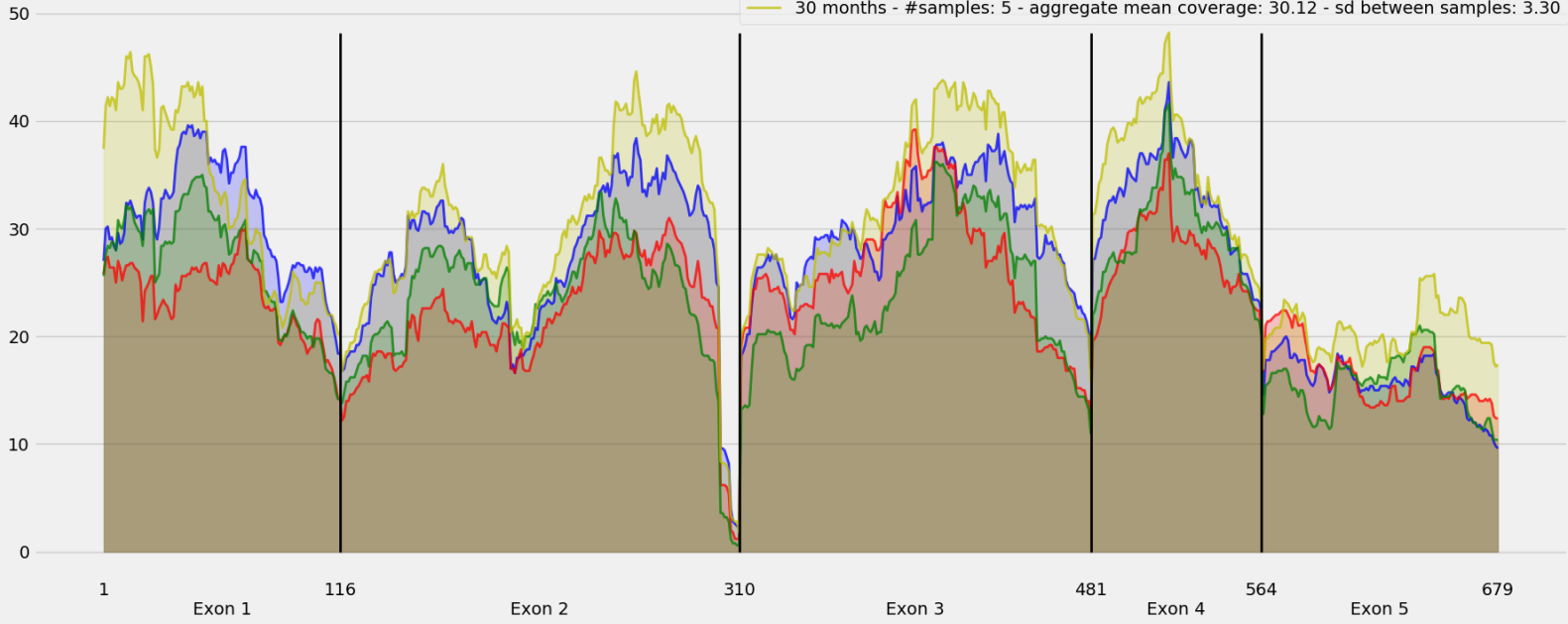
Coverage for chr19:4007497-4012806 - specific regions
Strand: Minus

9 months - #samples: 5 - aggregate mean coverage: 29.13 - sd between samples: 1.27
15 months - #samples: 5 - aggregate mean coverage: 24.89 - sd between samples: 2.36
24 months - #samples: 5 - aggregate mean coverage: 25.77 - sd between samples: 3.17
30 months - #samples: 5 - aggregate mean coverage: 32.05 - sd between samples: 3.30



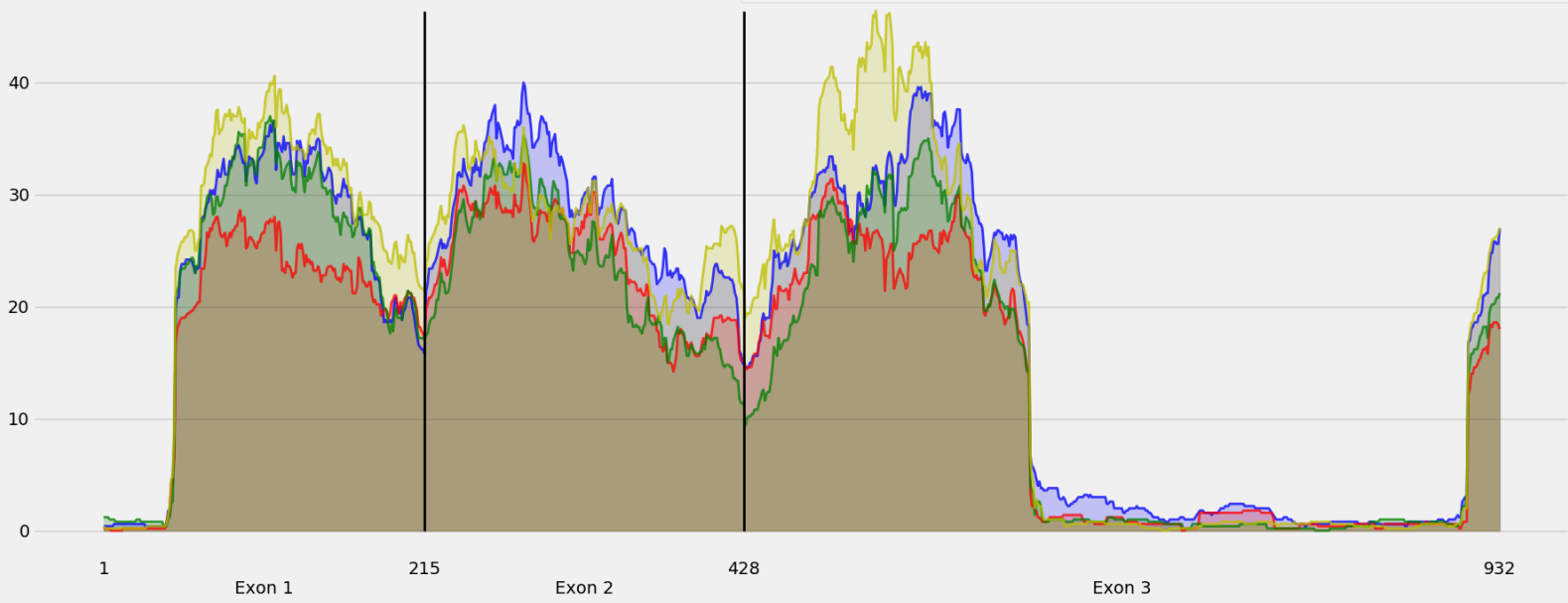
Coverage for chr19:4007497-4012806 - specific regions
Strand: Minus

9 months - #samples: 5 - aggregate mean coverage: 27.16 - sd between samples: 1.27
15 months - #samples: 5 - aggregate mean coverage: 22.96 - sd between samples: 2.36
24 months - #samples: 5 - aggregate mean coverage: 23.38 - sd between samples: 3.17
30 months - #samples: 5 - aggregate mean coverage: 30.12 - sd between samples: 3.30



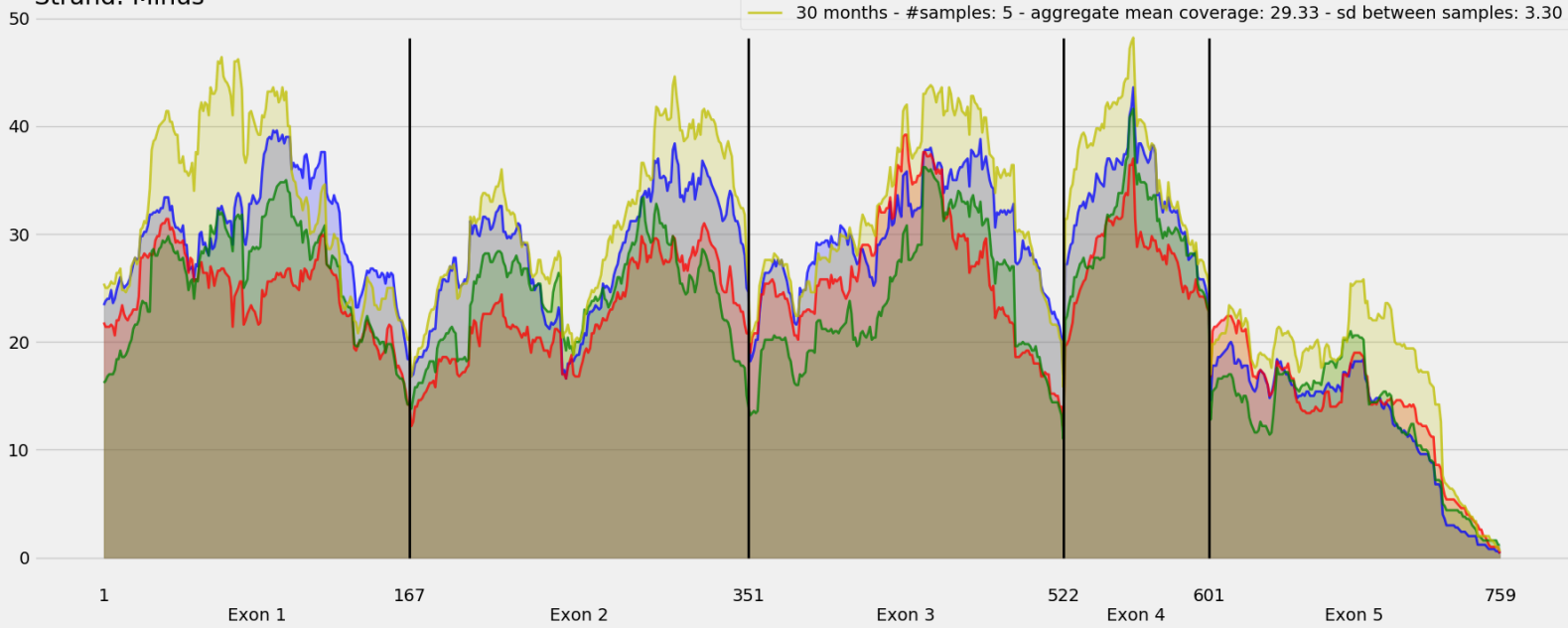
Coverage for chr19:4007497-4012806 - specific regions
Strand: Minus

9 months - #samples: 5 - aggregate mean coverage: 18.48 - sd between samples: 1.27
15 months - #samples: 5 - aggregate mean coverage: 15.12 - sd between samples: 2.36
24 months - #samples: 5 - aggregate mean coverage: 15.96 - sd between samples: 3.17
30 months - #samples: 5 - aggregate mean coverage: 19.24 - sd between samples: 3.30



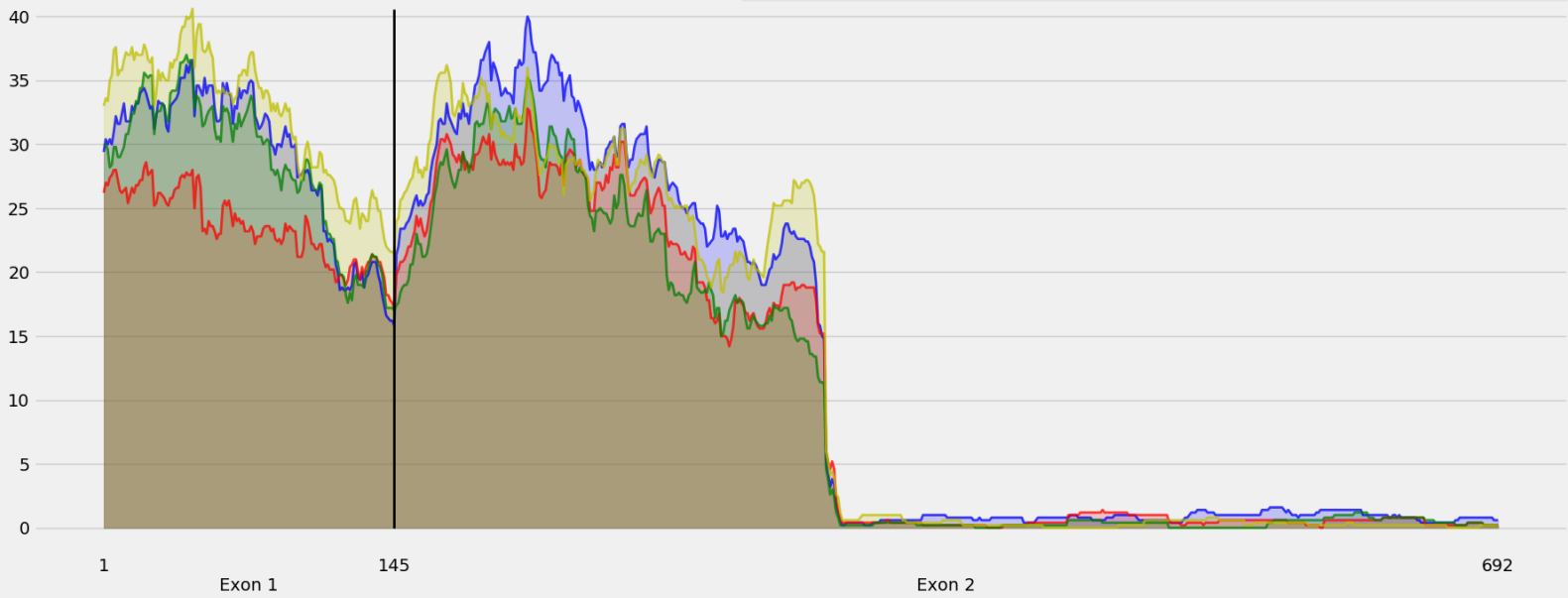
Coverage for chr19:4007497-4012806 - specific regions
Strand: Minus

9 months - #samples: 5 - aggregate mean coverage: 26.21 - sd between samples: 1.27
15 months - #samples: 5 - aggregate mean coverage: 22.44 - sd between samples: 2.36
24 months - #samples: 5 - aggregate mean coverage: 22.62 - sd between samples: 3.17
30 months - #samples: 5 - aggregate mean coverage: 29.33 - sd between samples: 3.30



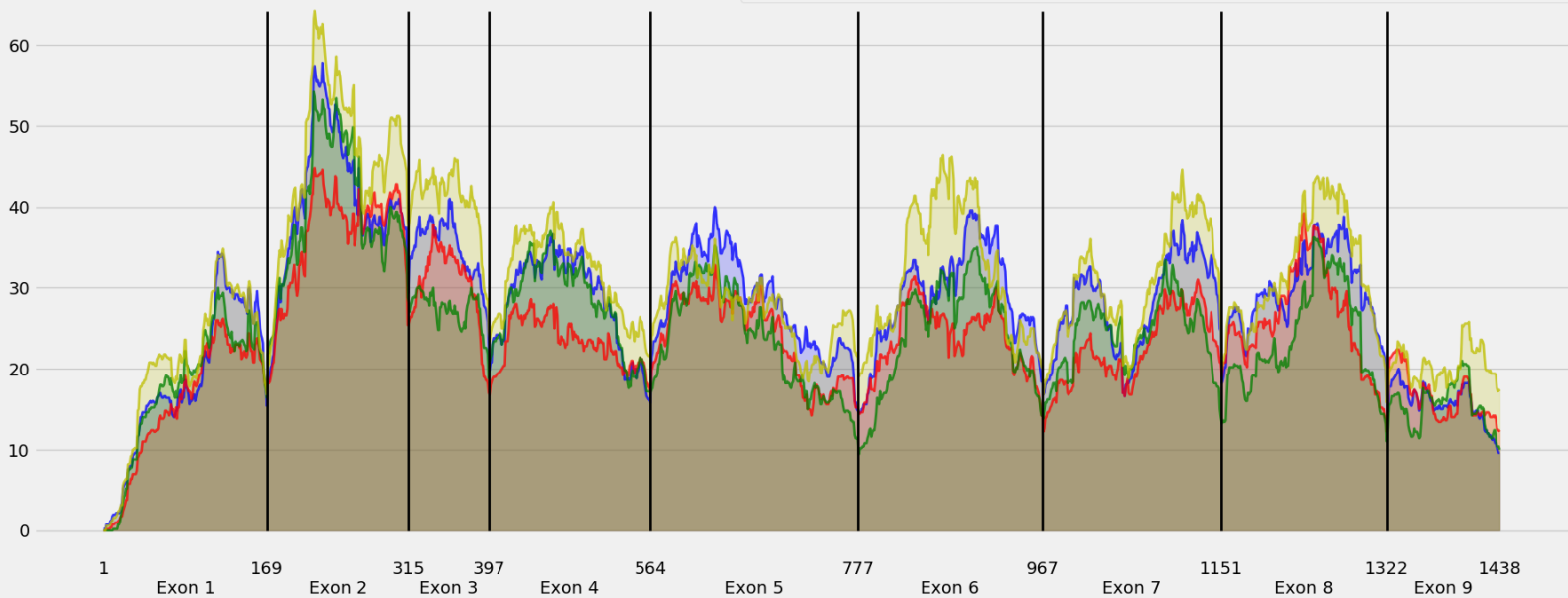
Coverage for chr19:4007497-4012806 - specific regions
Strand: Minus

9 months - #samples: 5 - aggregate mean coverage: 15.18 - sd between samples: 1.27
15 months - #samples: 5 - aggregate mean coverage: 12.61 - sd between samples: 2.36
24 months - #samples: 5 - aggregate mean coverage: 13.33 - sd between samples: 3.17
30 months - #samples: 5 - aggregate mean coverage: 15.43 - sd between samples: 3.30



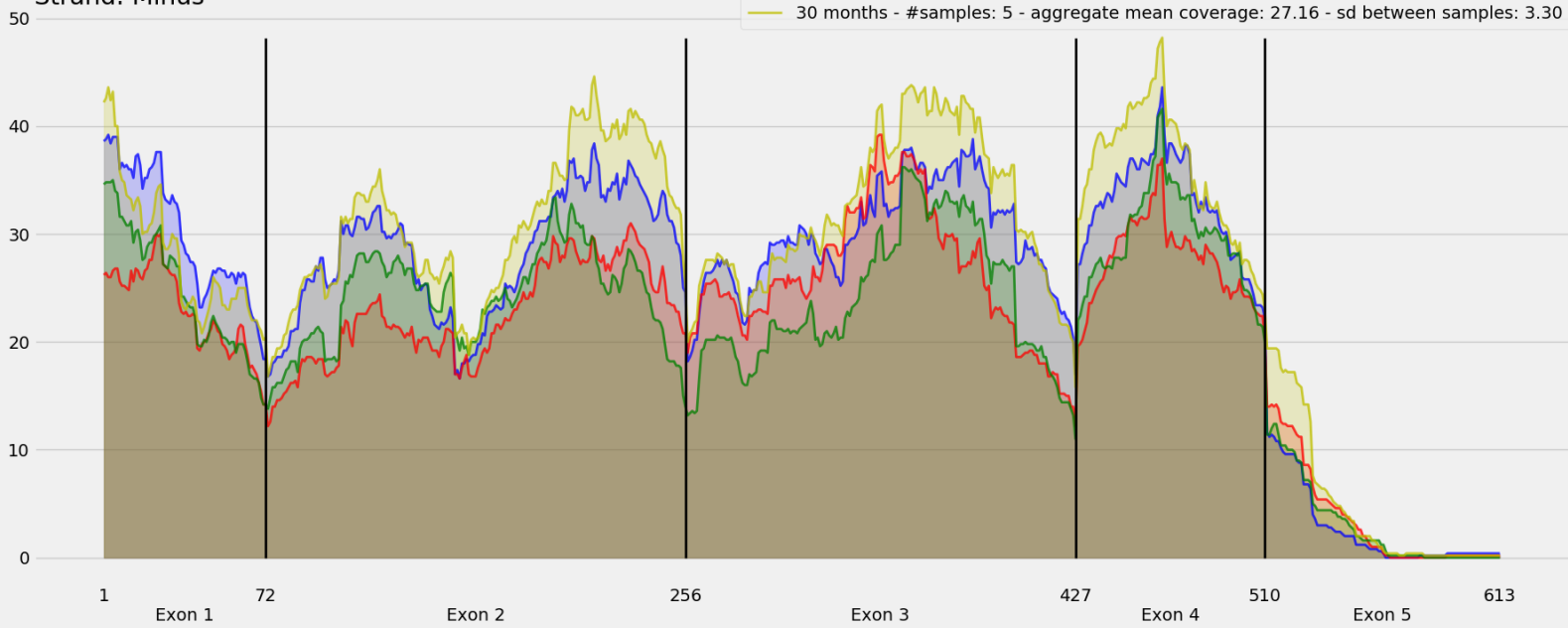
Coverage for chr19:4007497-4012806 - specific regions
Strand: Minus

9 months - #samples: 5 - aggregate mean coverage: 27.92 - sd between samples: 1.27
15 months - #samples: 5 - aggregate mean coverage: 23.92 - sd between samples: 2.36
24 months - #samples: 5 - aggregate mean coverage: 24.66 - sd between samples: 3.17
30 months - #samples: 5 - aggregate mean coverage: 30.76 - sd between samples: 3.30



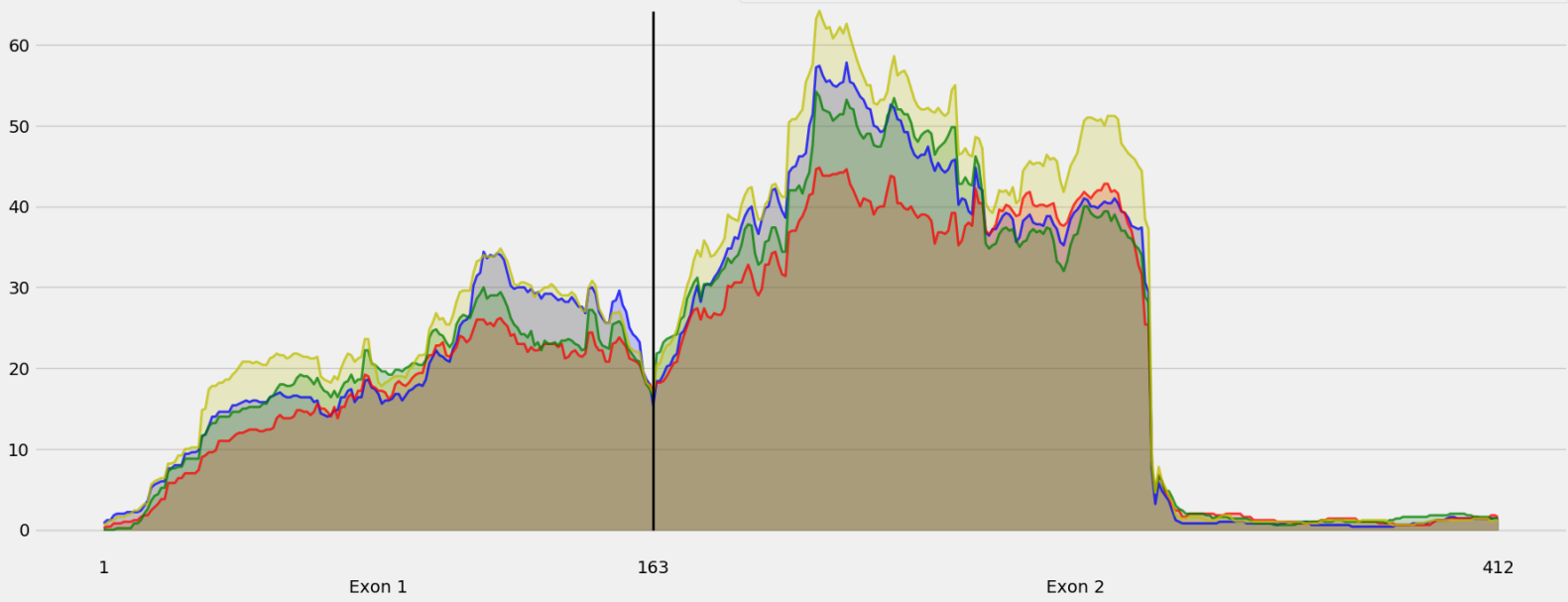
Coverage for chr19:4007497-4012806 - specific regions
Strand: Minus

9 months - #samples: 5 - aggregate mean coverage: 25.11 - sd between samples: 1.27
15 months - #samples: 5 - aggregate mean coverage: 21.05 - sd between samples: 2.36
24 months - #samples: 5 - aggregate mean coverage: 21.28 - sd between samples: 3.17
30 months - #samples: 5 - aggregate mean coverage: 27.16 - sd between samples: 3.30



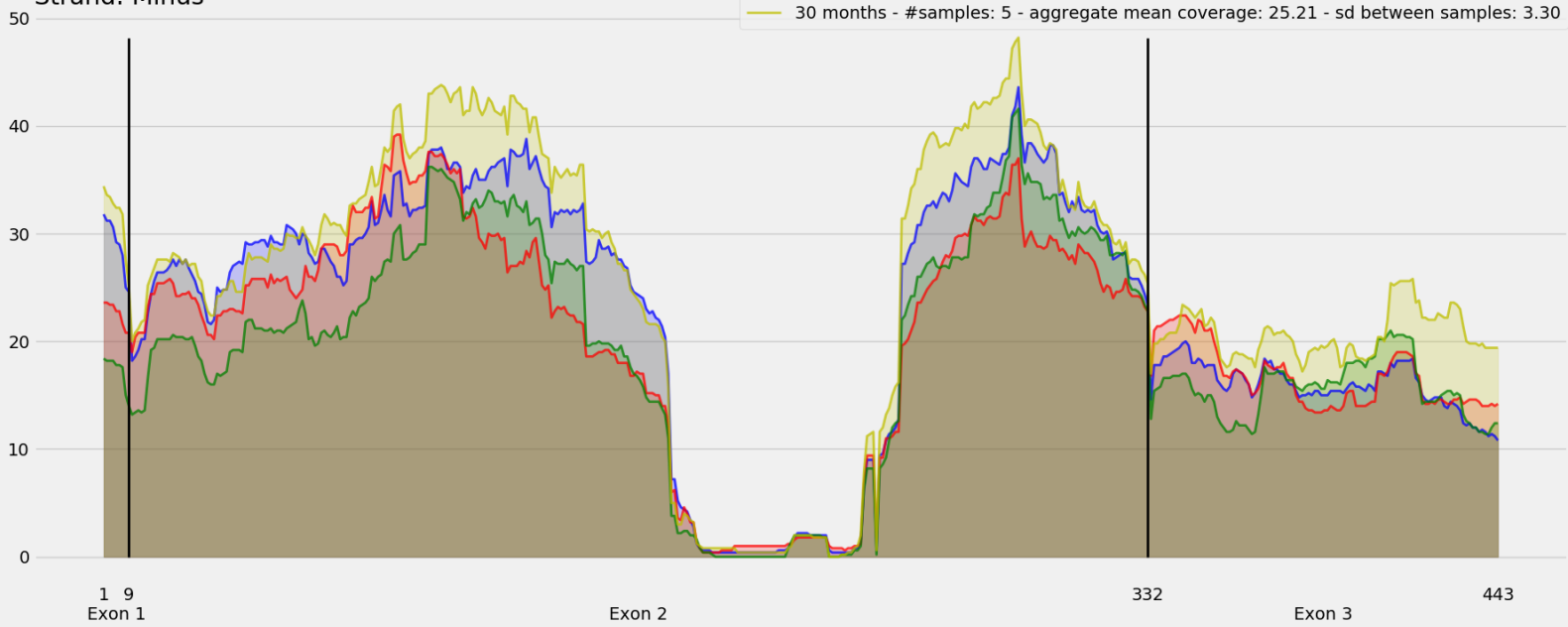
Coverage for chr19:4007497-4012806 - specific regions
Strand: Minus

9 months - #samples: 5 - aggregate mean coverage: 22.09 - sd between samples: 1.27
15 months - #samples: 5 - aggregate mean coverage: 19.59 - sd between samples: 2.36
24 months - #samples: 5 - aggregate mean coverage: 21.55 - sd between samples: 3.17
30 months - #samples: 5 - aggregate mean coverage: 24.94 - sd between samples: 3.30



Coverage for chr19:4007497-4012806 - specific regions
Strand: Minus

9 months - #samples: 5 - aggregate mean coverage: 22.42 - sd between samples: 1.27
15 months - #samples: 5 - aggregate mean coverage: 20.16 - sd between samples: 2.36
24 months - #samples: 5 - aggregate mean coverage: 19.15 - sd between samples: 3.17
30 months - #samples: 5 - aggregate mean coverage: 25.21 - sd between samples: 3.30



Coverage for chr19:4007497-4012806 - specific regions
Strand: Minus

9 months - #samples: 5 - aggregate mean coverage: 23.94 - sd between samples: 1.27
15 months - #samples: 5 - aggregate mean coverage: 20.50 - sd between samples: 2.36
24 months - #samples: 5 - aggregate mean coverage: 20.39 - sd between samples: 3.17
30 months - #samples: 5 - aggregate mean coverage: 26.77 - sd between samples: 3.30

