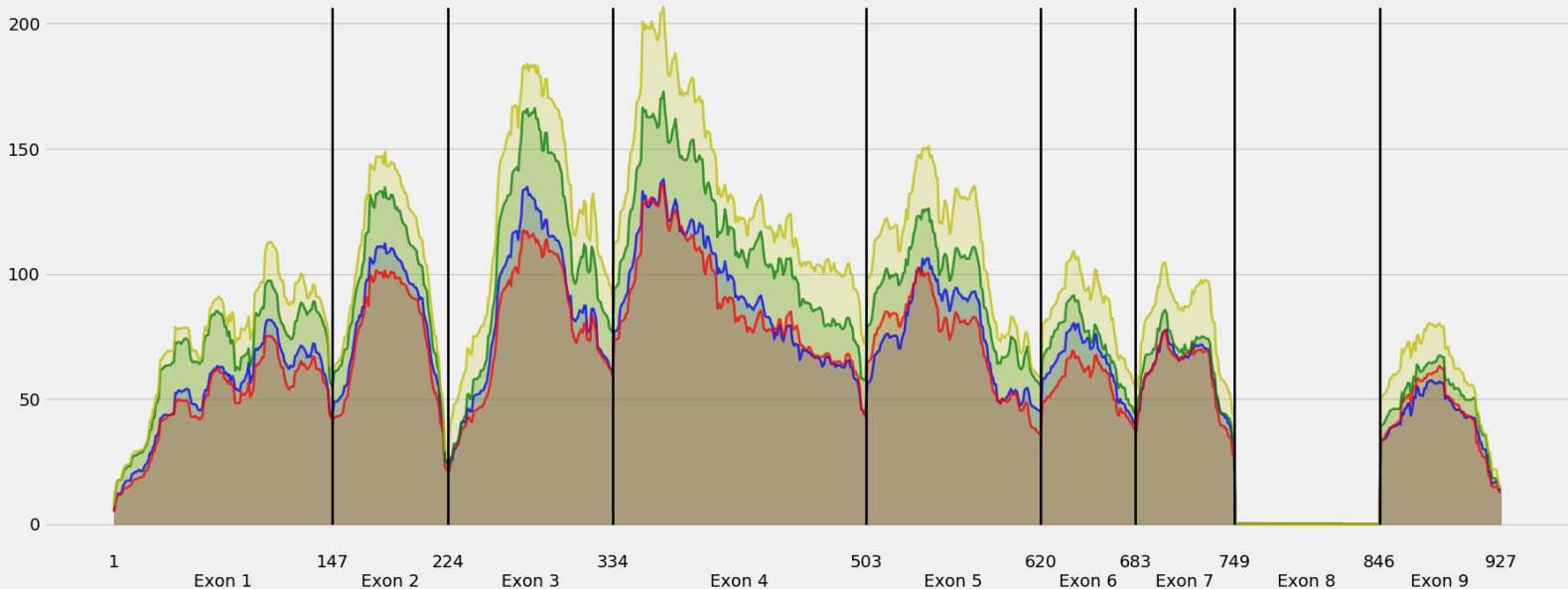


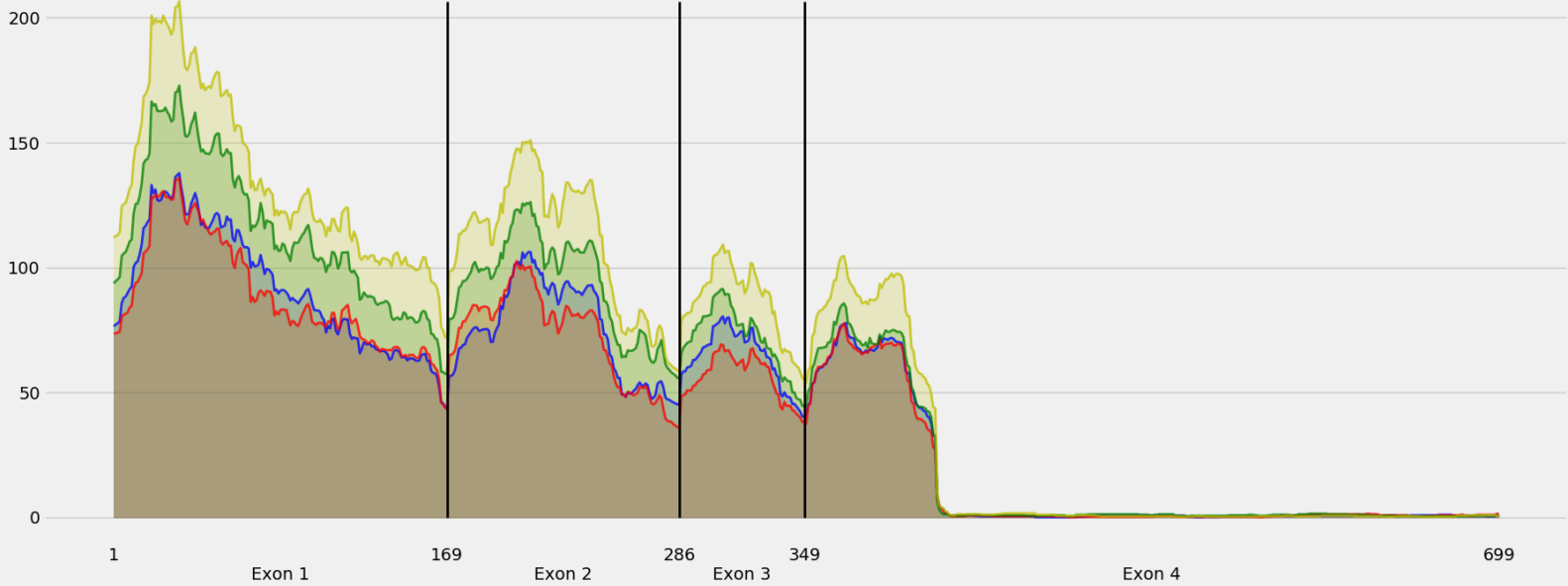
Coverage for chr17:66078795-66101559 - specific regions  
Strand: Minus

9 months - #samples: 5 - aggregate mean coverage: 63.80 - sd between samples: 0.47  
15 months - #samples: 5 - aggregate mean coverage: 60.36 - sd between samples: 0.44  
24 months - #samples: 5 - aggregate mean coverage: 77.47 - sd between samples: 1.19  
30 months - #samples: 5 - aggregate mean coverage: 90.65 - sd between samples: 1.40



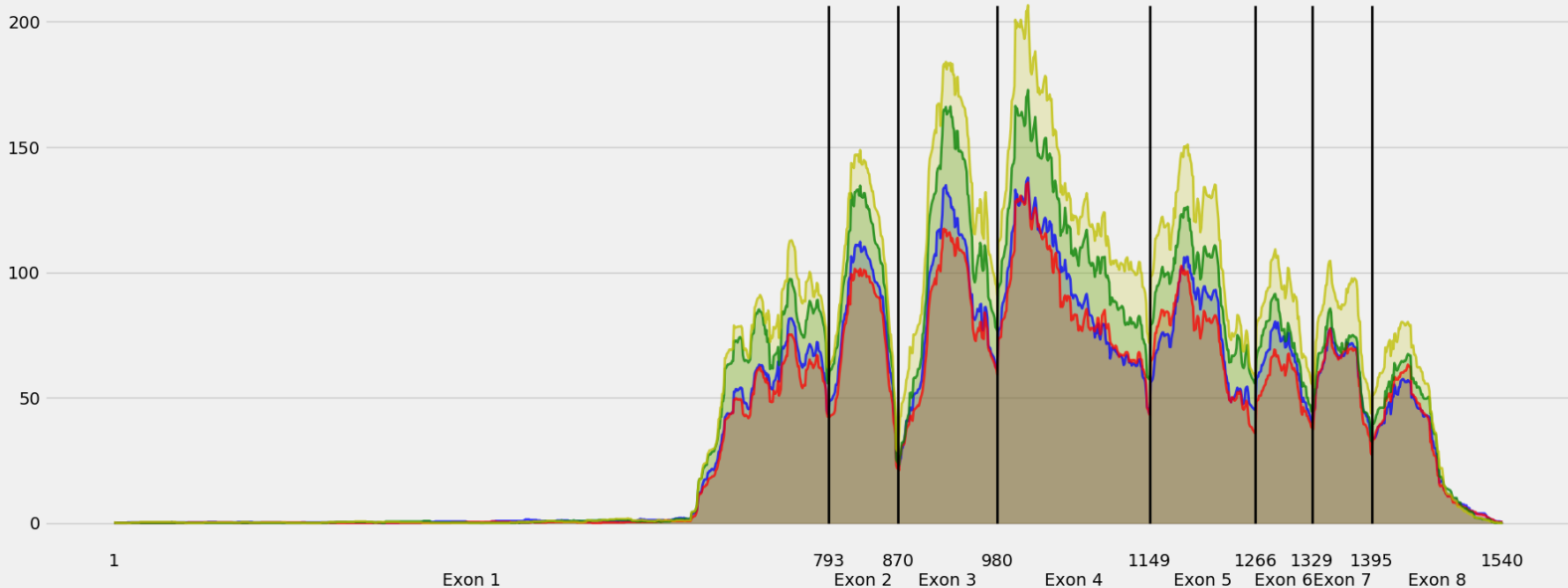
Coverage for chr17:66078795-66101559 - specific regions  
Strand: Minus

9 months - #samples: 5 - aggregate mean coverage: 46.54 - sd between samples: 0.47  
15 months - #samples: 5 - aggregate mean coverage: 44.49 - sd between samples: 0.44  
24 months - #samples: 5 - aggregate mean coverage: 56.16 - sd between samples: 1.19  
30 months - #samples: 5 - aggregate mean coverage: 66.84 - sd between samples: 1.40



Coverage for chr17:66078795-66101559 - specific regions  
Strand: Minus

9 months - #samples: 5 - aggregate mean coverage: 38.83 - sd between samples: 0.47  
15 months - #samples: 5 - aggregate mean coverage: 36.62 - sd between samples: 0.44  
24 months - #samples: 5 - aggregate mean coverage: 46.99 - sd between samples: 1.19  
30 months - #samples: 5 - aggregate mean coverage: 54.91 - sd between samples: 1.40



Coverage for chr17:66078795-66101559 - specific regions  
Strand: Minus

9 months - #samples: 5 - aggregate mean coverage: 53.16 - sd between samples: 0.47  
15 months - #samples: 5 - aggregate mean coverage: 51.49 - sd between samples: 0.44  
24 months - #samples: 5 - aggregate mean coverage: 63.38 - sd between samples: 1.19  
30 months - #samples: 5 - aggregate mean coverage: 75.92 - sd between samples: 1.40

